

## EXPLOSION PROOF 500 SERIES INDUSTRIAL CONTROL EQUIPMENT FOR HAZARDOUS LOCATIONS



**Explosion Proof 500 Series Footswitch - Two Pedal**

### Environmental Ratings:

CLASS I, DIVISION 1, GROUP D  
CLASS II, DIVISION 1, GROUP F & G  
CLASS I, ZONE 1, GROUP IIA  
NEMA Type 2, 7D & 9F  
UL ENCLOSURE 2  
EN 60529 Degree of Protection IP41

### Key Benefits

Nonsparking cast aluminum housing. Aluminum full guard with integral base plate painted Alert Orange. All models supplied with a 3/4"-14 N.P.T. threaded rigid metal conduit entry and mounting provisions in the base plate. The two pedal model is supplied with a divider bar between pedals which helps prevent accidental operation of both pedals at one time.

Size: 10-1/4" x 11" x 4-3/8"  
Weight: Approx. 7-3/4 lbs.

### SPECIFICATIONS

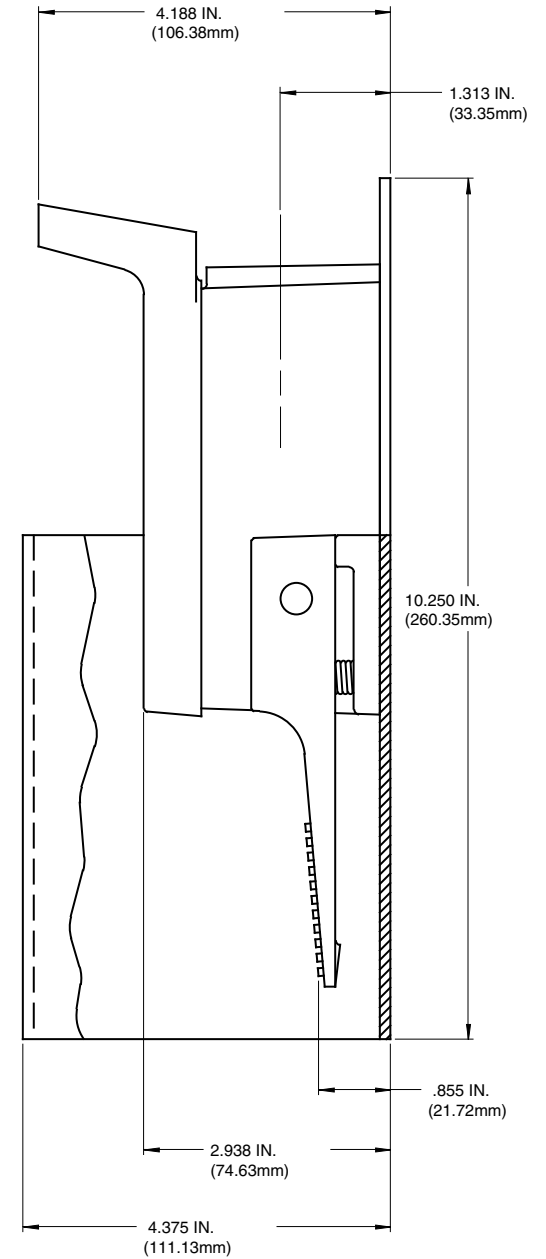
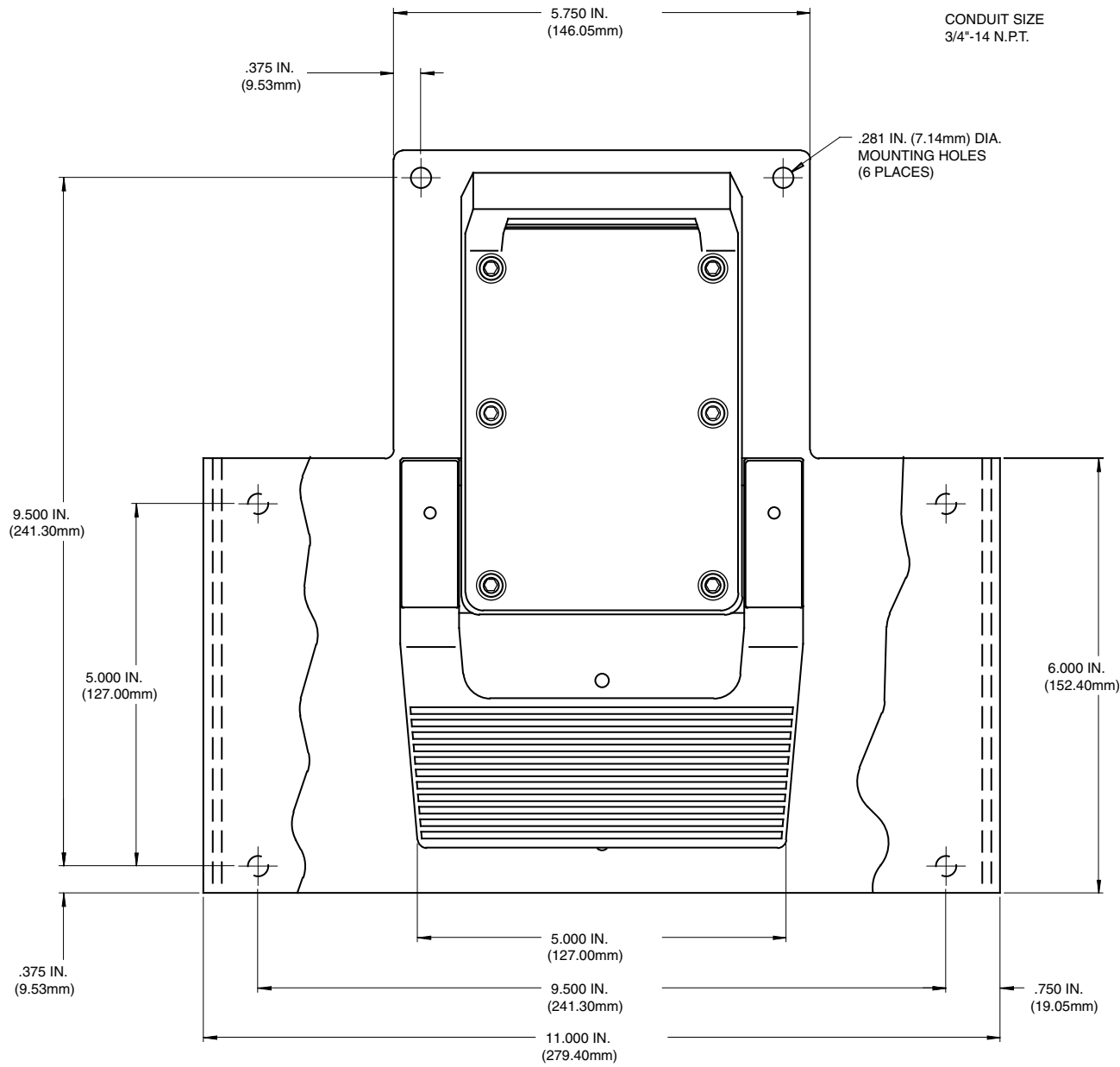
(Special variations are available to the O.E.M. on special order on the models listed below)

**⚠ WARNING**

	CATALOG NUMBER	CIRCUIT	FORM	ELECTRICAL RATINGS
	592-EX (Single Pedal)	SPDT	C	15 A 125 VAC 10 A 250 VAC 3/4 H.P. 125 VAC
	594-EX (Single Pedal)	DPDT	C	1 H.P. 250 VAC 3 A 28 VDC
	597-EX (Two Pedal)	Each Pedal SPDT	C	Heavy Pilot Duty 250 VAC Max. Momentary Contact

# Industrial Explosion Proof 500 Series Single Treadle Model

NOTE: ALL DIMENSIONS ARE FOR REFERENCE ONLY.



# Explosion Proof - Industrial 500



**CLASS I, DIVISION 1, Group D**  
**CLASS II, DIVISION 1, Group F & G**  
**CLASS I, ZONE 1, GROUP IIA**  
**NEMA Type 2, 7D & 9F**  
**UL ENCLOSURE 2**  
**EN 60529 Degree of Protection IP41**

***Driptight • Dusttight • Watertight • Oiltight***  
**EQUIPMENT FOR HAZARDOUS LOCATIONS**

**Materials of Construction:**

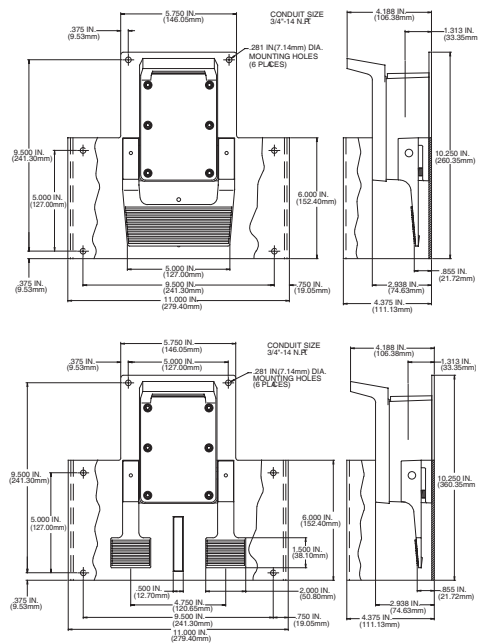
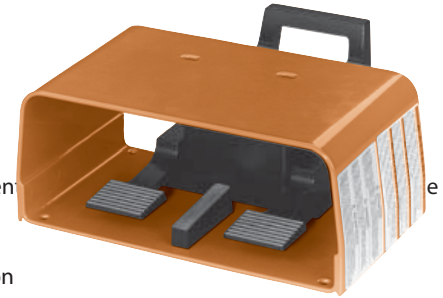
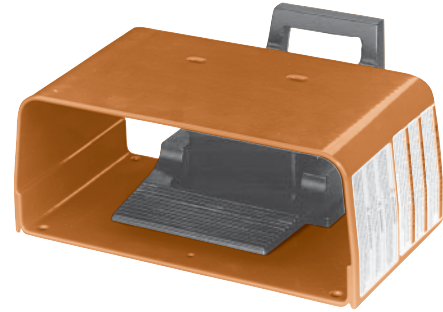
- Aluminum full guard with integral base plate painted Alert Orange
- All models supplied with a 3/4"-14 N.P.T. threaded rigid metal conduit entry and mounting provisions in the base plate
- Integral handle for ease of moving

**Features & Benefits:**

- Non sparking cast aluminum housing
- 4 holes provided for rigid mounting to floor or equipment
- The two pedal model is supplied with a divider bar between pedals which helps prevent time

**Options:**

- Waterproof model available under "600 Series" (See "Explosion Proof - Industrial 600" on page 23 for details)
- Medical Explosion-proof models available (See "Explosion Proof - Medical..." on pages 24 & 25 for details)



Size (HxWxD):	4.38 x 11 x 10.25 In.
Weight:	7.75 lbs.

<b>⚠ WARNING SEE PRODUCT WARNING ON PAGE 8</b>						
SPECIFICATIONS (Special variations are available to the O.E.M. on special order on the models listed below)						
AGENCY APPROVALS	EN 60529 Degree of Protection	CATALOG NUMBER	DESCRIPTION	CIRCUIT	FORM	ELECTRICAL RATINGS
cULus	IP41	592-EX	Single Pedal / Momentary	SPDT	C	15 A 125 VAC 10 A 250 VAC
cULus	IP41	594-EX	Single Pedal / Momentary	DPDT	C	3/4 H.P. 125 VAC 1 H.P. 250 VAC
cULus	IP41	597-EX	Two Pedal / Momentary	Each Pedal SPDT	C	3 A 28 VDC Heavy Pilot Duty 250 VAC Max.