

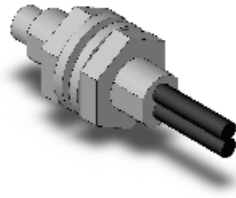
- ▶ Product Category
- ▶ Sensors
  - ▶ Photoelectric Sensors
  - ▶ Optical Fiber Sensors
  - ▶ Fiber Units
  - ▶ E32 Series
  - ▶ Item list

- ▶ Product Category
- ▶ A to Z Index
- ▶ Applications
- ▶ Cautions

Fiber Sensors

## E32-D11L

Diffuse-reflective , Long distance/High power , M6 screw



CG Image [3D-CAD]

about this Product Family

Inquiry of this Product

Ratings / Performance

Dimensions

As of June 24, 2011

<b>Product outline</b>	Long-distance M6 screw head reflective fiber
<b>Sensing method</b>	Diffuse-reflective
<b>Shape</b>	Screw-shaped Top view
<b>Fiber cable type</b>	Standard
<b>Standard Length</b>	2m
<b>Minimum bending radius</b>	R 25 mm Min.
<b>Free-cut</b>	Possible
<b>Degree of protection</b>	IEC60529: IP67
<b>Differential distance</b>	20% max. of sensing distance
<b>Ambient temperature</b>	Operating: -40 to 70 CEL Storage: -40 to 70 CEL (with no icing or condensation)
<b>Ambient humidity</b>	Operating: 35 to 85 %RH Storage: 35 to 95 %RH (with no icing)
<b>Vibration resistance</b>	10 to 55 Hz1.5-mm double amplitude for 2 hours each in X, Y, and Z directions
<b>Shock resistance</b>	500m/s <sup>2</sup> for 3 times each in X, Y, and Z directions
<b>Weight (packedstate)</b>	Approx. 32 g
<b>Material (Sensing head)</b>	Brass nickel plating
<b>Material (Fiber sheath)</b>	Plastic (polyethylene coating)
<b>Material (Fiber core)</b>	Acrylic resin (PMMA)
<b>Material (Clamping nuts)</b>	Brass nickel plating
<b>Material (Toothed washer)</b>	Iron nickel plating
<b>Tensile strength</b>	29.4 N Max.
<b>Clamping torque</b>	0.98 N.m Max.
<b>Accessories</b>	Hexagonal nut, Toothed washer, Fiber cutter(E39-F4)

As of June 24, 2011