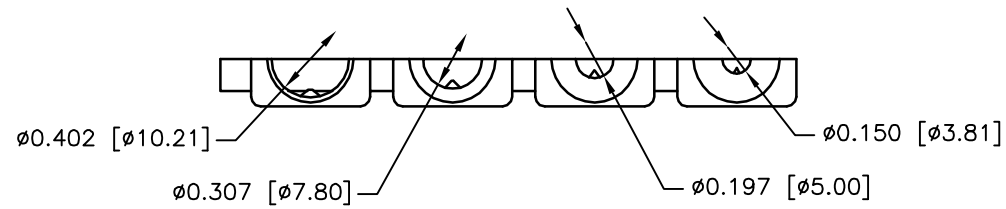
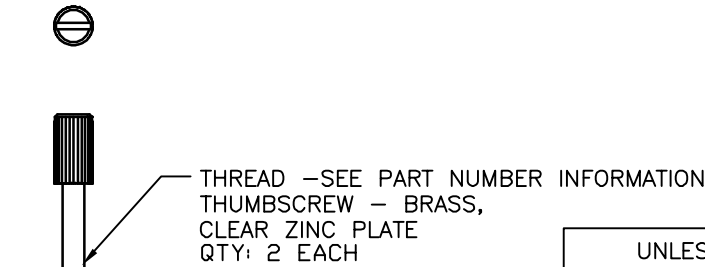
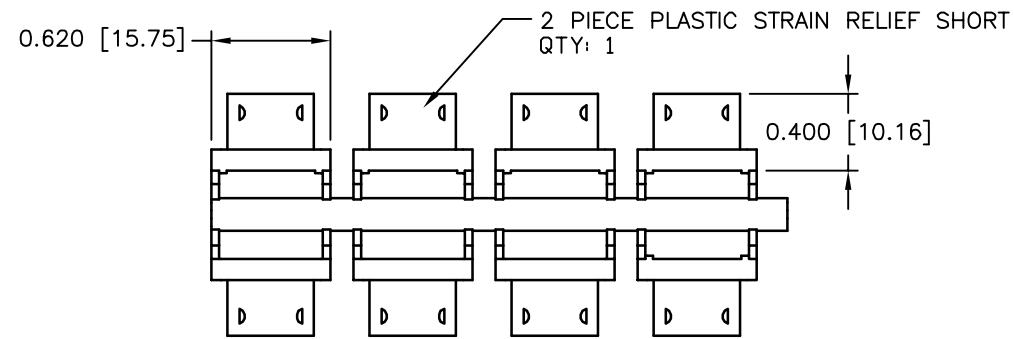
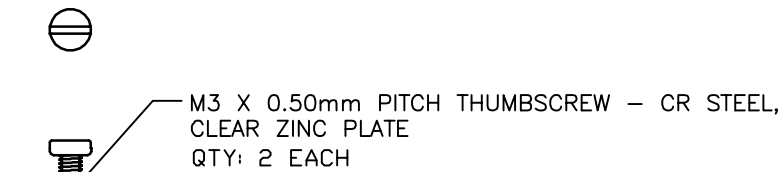
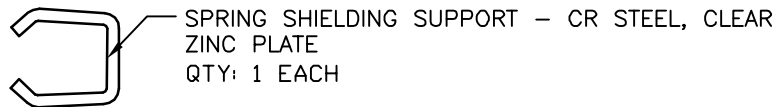
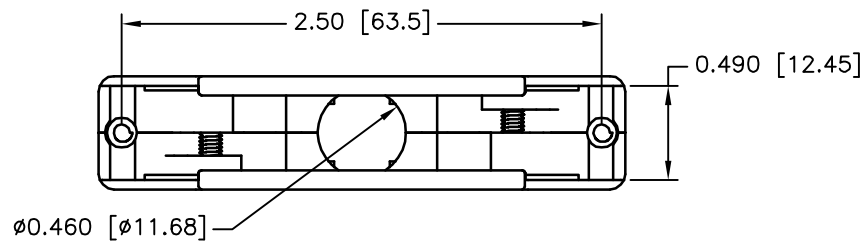
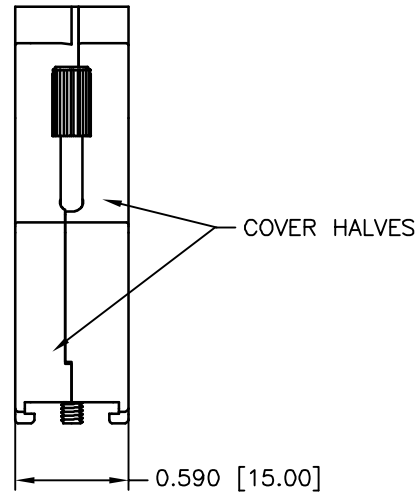
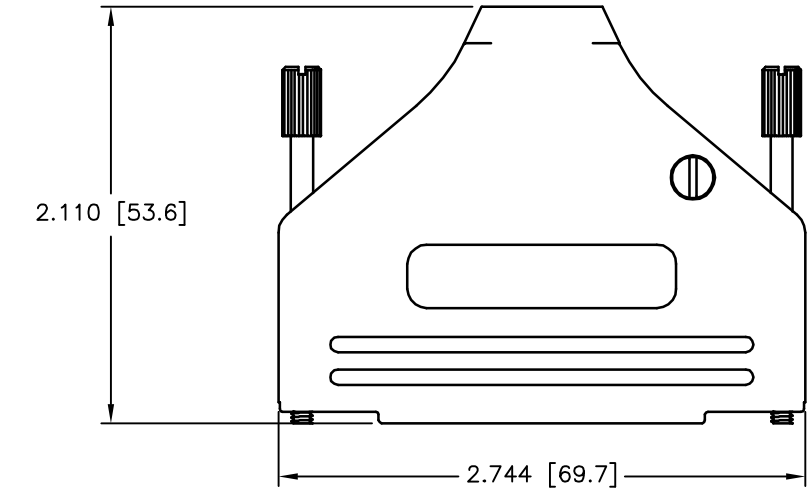


REVISIONS				
ZONE	REV	DESCRIPTION	DATE	APPROVED
	A	ECN 0679	30-OCT-09	
	B	ECN 0684	15-APR-10	



THIS IS A CONTROLLED DOCUMENT AND IS SUBJECT TO CHANGE. CONTACT NORTHERN TECHNOLOGIES ENGINEERING FOR THE LATEST REVISION.

PART NUMBER INFORMATION

PART#	LOGO STYLE	THREAD	SUPPLIED
MHDETZK37K	NO LOGO	4-40 UNC	PACKAGED
MHDETZK37KM25	NO LOGO	M2.5	PACKAGED
MHDETZK37KM26	NO LOGO	M2.6	PACKAGED
MHDETZK37KM3	NO LOGO	M3	PACKAGED

CONNECTOR COVER:

- 1.MATERIAL: ZINC DIE-CAST
- 2.FINISH: NICKEL PLATING
- 3.DIMENSIONS: INCHES [MM]
- 4.TOLERANCE: ± 0.015 [0.381]

COMPRESSION INSERT TREE

- 1.MATERIAL: ABS
- 2.COLOR: BLACK
- 3.DUROMETER: 70 - TYPE D
- 4.DIMENSIONS: INCHES [MM]
- 5.TOLERANCE: ± 0.015 [0.381]

COMPLIANCE NOTE:

PART MUST BE IN COMPLIANCE TO:
DIRECTIVE 2002/95/EC [RoHS]

UNLESS OTHERWISE SPECIFIED		Northern Technologies			
1. ALL DIMENSIONS ARE IN INCHES (MM) 2. DIMENSIONS ARE TYPICAL		THIS DRAWING IS THE PROPERTY OF NORTHERN TECHNOLOGIES AND SHOULD NOT BE REPRODUCED WITHOUT NORTHERN TECHNOLOGIES WRITTEN PERMISSION.			
DRAWN JSD		PART NUMBER SEE PART NUMBER INFORMATION			
CHECKED SCN		DESCRIPTION CMA 37 STRAIGHT EXIT METAL COVER NICKEL			
ISSUED		SIZE B	CODE 200_202	DWG NO. 0002-200-202	REV
14-JUL-06		SCALE N.T.S.		SHEET 1 OF 1	