

[Home](#) - [Products](#) - [Technical Data](#) - [Reps/Distr.](#) - [Contact Us](#)

HIGH DENSITY SOLDER CUP CONNECTORS - D3 SERIES

SPECIFICATIONS:

MECHANICAL:

Shell: steel

Finish: tin plated

Insulator: thermoplastic UL94V0

CONTACTS:

Stamped Pin: copper alloy

Contact Engagement Force: max. 12 oz. [3.40N]

Contact Separation Force: max. 0.75 oz. [0.20N]

Finish: reference drawing

ELECTRICAL:

Current Rating: 3 amps

Voltage Rating : 250 vac

Dielectric Withstanding Voltage: 1000 vac @ 1 minute

Insulation Resistance: 500 meg ohm @ 500 vdc

Contact Resistance: <15 milli ohms (mated)

Temperature Range: -55° TO +105° C

Available Sizes:

Male: 15, 26, 44, 62, & 78 position

Female: 15, 26, 44, 62, & 78 position

[RoHS Compliant](#)

[DOWNLOAD](#)

[DRAWING](#)

[CERTIFICATE OF COMPLIANCE](#)



Part Numbers

XD3E15PTES

XD3E15STS

XD3E26PTES

XD3E26STS

XD3E44PTES

XD3E44STS

XD3E62PTES

XDE362STS

XD3E78PTES

XD3E78STS

[Click here for Non-RoHS Compliant Product Part Number Page](#)

D-SUB HIGH DENSITY SOLDER CUP CONNECTORS - D3 SERIES



NOTE A:

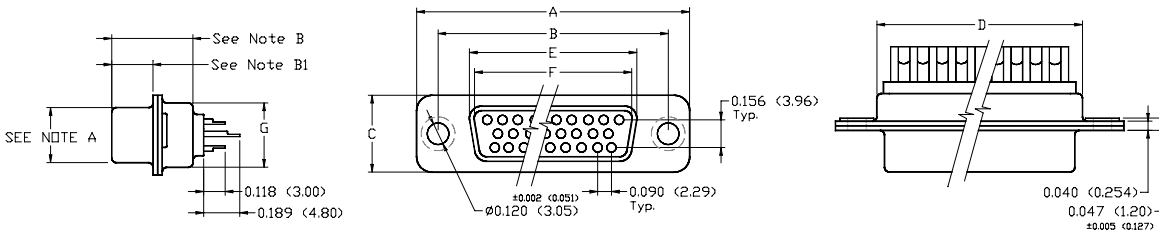
15, 26, 44, & 62C MALE: 0.329 (8.36) ±0.010 (±0.254)
 FEMALE: 0.311 (7.90) ±0.010 (±0.254)
 78C MALE: 0.439 (11.15) ±0.010 (±0.254)
 FEMALE: 0.429 (10.90) ±0.010 (±0.254)

NOTE B:

15, 26, 44, & 62C: 0.429 (10.90) ±0.010 (±0.254)
 78C: 0.431 (10.95) ±0.010 (±0.254)

NOTE B1:

15, 26, 44, & 62C: 0.232 (5.90) ±0.010 (±0.254)
 78C: 0.240 (6.10) ±0.010 (±0.254)



SPECIFICATIONS:

MECHANICAL

Shell: Steel
 Finish: Yellow Zinc or Tin Plate.
 Insulator Material: Thermoplastic UL94V-0.
 Insulator Color: Black

Contacts: Stamped: Copper Alloy.

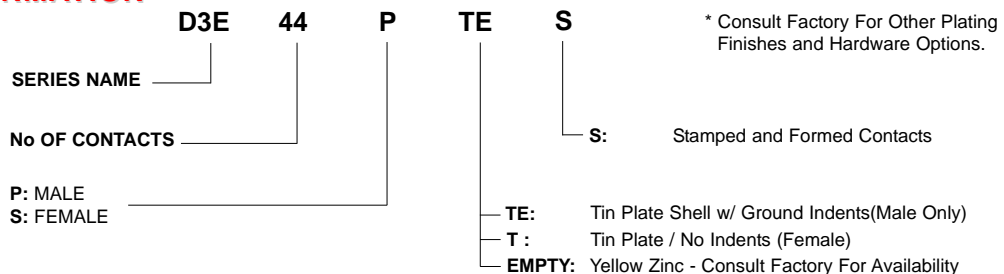
Plating: Gold over Nickel.
 Temperature Range: -55° to +105° C.

ELECTRICAL

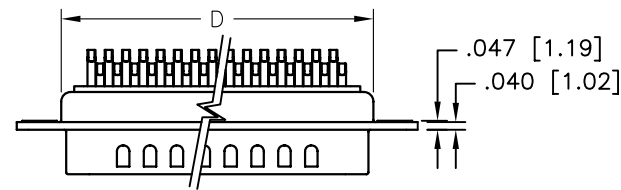
Voltage Rating: 300 VDC.
 Current Rating: 3 Amps.
 IR: > 3000 Meg OHms @ 500V
 CR: < 15 Milliohms.
 Dielectric Withstanding Voltage: AC 1000 V Min. (for 1 Minute).

D-SUB SOLDER CUP CONNECTORS – D3 SERIES - DIMENSIONS								
No. of Contacts	Shell Size	INCHES [MM]						
		A ±0.005 [±0.127]	B ±0.005 [±0.127]	C ±0.005 [±0.127]	D ±0.005 [±0.127]	E Max. Female ±0.005 [±0.127]	F Min. Male ±0.005 [±0.127]	G ±0.005 [±0.127]
15	E (9)	1.213 [30.81]	0.984 [24.99]	0.494 [12.55]	0.759 [19.28]	0.643 [16.33]	0.666 [16.92]	0.422 [10.72]
26	A (15)	1.541 [39.14]	1.310 [33.27]	0.494 [12.55]	1.089 [27.65]	0.971 [24.66]	0.994 [25.25]	0.422 [10.72]
44	B (25)	2.088 [53.04]	1.850 [46.99]	0.494 [12.55]	1.626 [41.30]	1.511 [38.38]	1.534 [38.96]	0.422 [10.72]
62	C (37)	2.730 [69.34]	2.500 [63.50]	0.494 [12.55]	2.261 [57.44]	2.159 [54.84]	2.182 [55.42]	0.422 [10.72]
78	D (50)	2.638 [67.00]	2.402 [61.00]	0.602 [15.30]	2.169 [55.10]	2.056 [52.20]	2.079 [52.81]	0.528 [13.40]

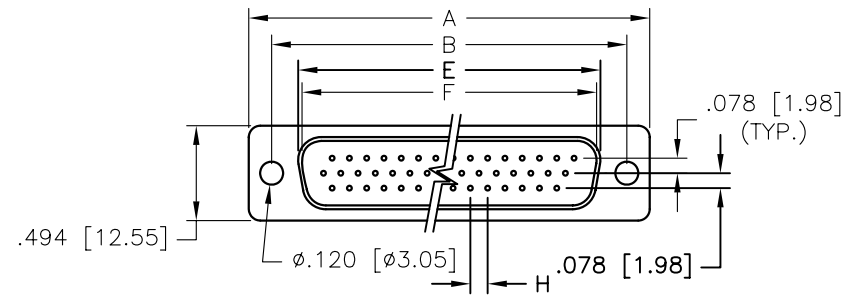
ORDER INFORMATION



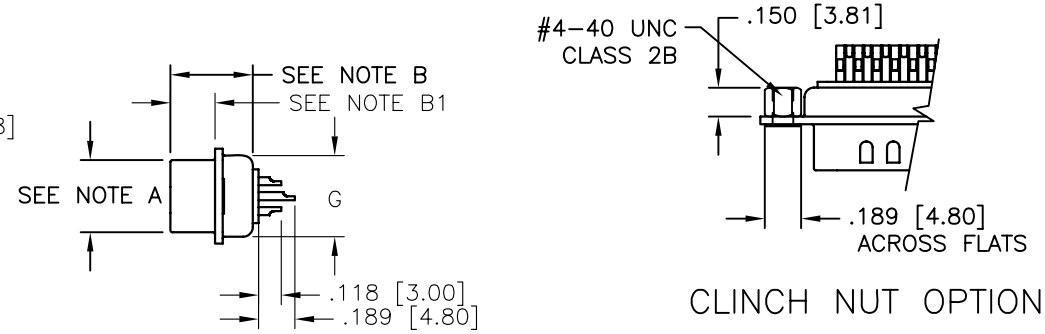
REVISIONS				
ZONE	REV	DESCRIPTION	DATE	APPROVED
	A	ECN 0619	25-AUG-06	
	B	ECN 0649	22-APR-08	



NOTE A: 15, 26, 44 & 62 MALE: 0.327 [8.30]
 15, 26, 44 & 62 FEMALE: 0.311 [7.90]
 NOTE B: 15, 26, 44 & 62 MALE: 0.431 [10.95]
 15, 26, 44 & 62 FEMALE: 0.423 [10.75]
 NOTE B1: 15, 26, 44 & 62 MALE: 0.240 [6.10]
 15, 26, 44 & 62 FEMALE: 0.232 [5.90]



15 THROUGH 62 POSITION



CLINCH NUT OPTION

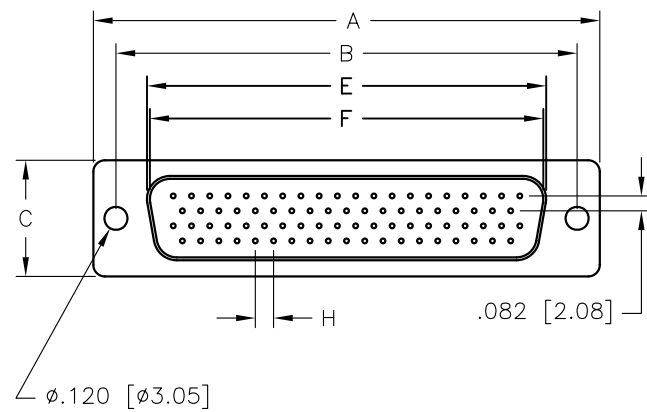
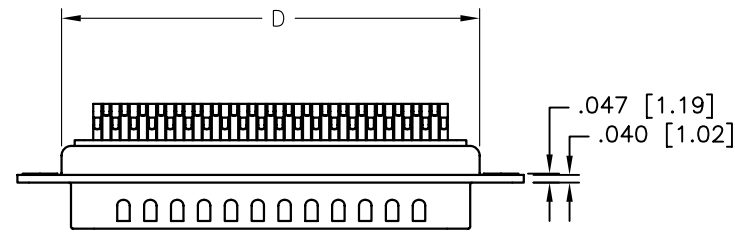
No. of Contacts	Shell Size	DIMENSIONS INCHES [MM]							
		A	B	C	D	E Max. Female	F Min. Male	G	H
15	E(9)	1.213 [30.81]	0.984 [24.99]	0.494 [12.55]	0.759 [19.28]	0.643 [16.33]	0.666 [16.92]	0.422 [10.72]	0.090 [2.29]
26	A(15)	1.541 [39.14]	1.310 [33.27]	0.494 [12.55]	1.089 [27.65]	0.971 [24.66]	0.994 [25.25]	0.422 [10.72]	0.090 [2.29]
44	B(25)	2.088 [53.04]	1.850 [46.99]	0.494 [12.55]	1.626 [41.30]	1.511 [38.38]	1.534 [38.96]	0.422 [10.72]	0.090 [2.29]
62	C(37)	2.730 [69.34]	2.500 [63.50]	0.494 [12.55]	2.261 [57.44]	2.159 [54.84]	2.182 [55.42]	0.422 [10.72]	0.095 [2.41]
78	D(50)	2.638 [67.00]	2.406 [61.11]	0.602 [15.30]	2.178 [55.32]	2.064 [52.43]	2.079 [52.81]	0.527 [13.40]	0.095 [2.41]

FACTORY DESIGNATOR
 LEAVE BLANK ()

ORDER INFORMATION

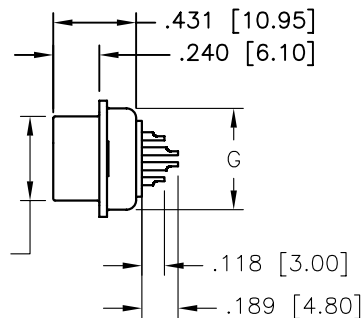
SERIES _____ D3 E 44 P TE S XXX C
 RoHS _____
 NO. OF CONTACTS _____
 P: MALE _____
 S: FEMALE _____
 TE: TIN PLATED WITH _____
 GROUNDING INDENTS (MALE ONLY)
 T: TIN PLATED NO _____
 GROUNDING INDENTS (FEMALE ONLY)
 NE: NICKEL PLATED WITH _____
 GROUNDING INDENTS (MALE ONLY)
 N: NICKEL PLATED NO _____
 GROUNDING INDENTS (FEMALE ONLY)

EMPTY: NO OPTIONS
 C: REAR MOUNT #4-40 CLINCH NUT .150 [3.81]
 [COPPER ALLOY]
 CONTACT FINISH:
 EMPTY: GOLD FLASH OVER ENTIRE CONTACT
 CONSULT FACTORY FOR OTHER PLATING OPTIONS
 S: STAMPED AND FORMED CONTACTS



78 POSITION

.439 [11.15] MALE
 .429 [10.90] FEMALE



NOTES:

- SHELL MATERIAL: STEEL
- SHELL FINISH: SEE ORDER INFORMATION
- INSULATOR MATERIAL: THERMOPLASTIC UL94V-0
- INSULATOR COLOR: BLACK
- CONTACTS: COPPER ALLOY
- VOLTAGE RATING: 250 VAC
- CURRENT RATING: 3 AMPS MAX
- CONTACT RESISTANCE: 15 MILLIOHMS MAX.
- INSULATION RESISTANCE: 500 MEGOHMS @ 500 VDC
- DIELECTRIC WITHSTANDING VOLTAGE: 1000 VAC / 1 MINUTE
- TEMPERATURE RANGE: -55° TO +105° CENTIGRADE
- COMPLIANCE NOTE:
 PART MUST BE IN COMPLIANCE TO:
 DIRECTIVE 2002/95/EC of 27 January 2003 [RoHS]

THIS IS A CONTROLLED DOCUMENT AND IS SUBJECT TO CHANGE. CONTACT NORTHERN TECHNOLOGIES ENGINEERING FOR THE LATEST REVISION.

UNLESS OTHERWISE SPECIFIED 1. ALL DIMENSIONS ARE IN INCHES (MM) 2. DIMENSIONS ARE TYPICAL		Northern Technologies <small>THIS DRAWING IS THE PROPERTY OF NORTHERN TECHNOLOGIES AND SHOULD NOT BE REPRODUCED WITHOUT NORTHERN TECHNOLOGIES WRITTEN PERMISSION.</small>		
DRAWN JSD 13-OCT-05		PART NUMBER SEE ORDER INFORMATION		
CHECKED SCN 13-OCT-05		DESCRIPTION D3E SERIES CONNECTORS [RoHS]		
ISSUED 13-OCT-05	SCALE 1:1	SIZE B	CODE 200_156	DWG NO. 0002-200-156
				REV
				SHEET 1 OF 1