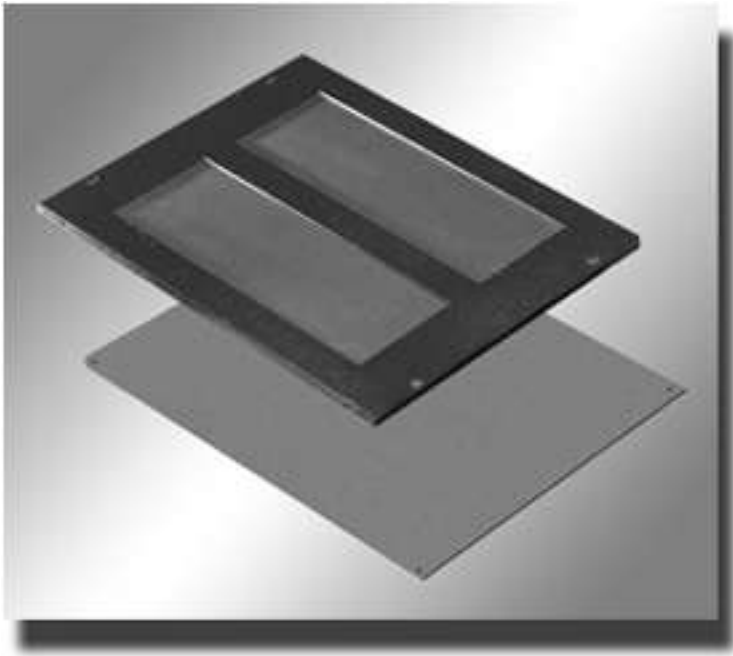


"Contempra 2" Rack Frame Bottoms



Features:

- 14 gauge steel construction...
- Supplied with mounting hardware...
- 2 types available (Micro Cell Cable Entry and Solid - pictured from top to bottom)...
- Paint matches "C2" type rack frame in the same rugged textured powder paint finish...

Micro Cell Cable Entry Bottom

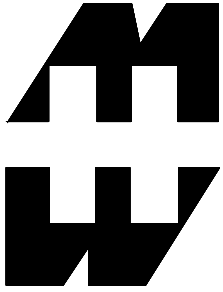
(Features 2 cutouts for cable access. Underside of cutouts covered with black foam rubber which, when punctured for cable access, still maintains a virtually sealed bottom)

Part Number			Drawing File Size		.zip File Size	Use With Rack Frame Depth	Cutout Size (2 cutouts)
C2BPCE1923BK1 C2BPCE1923CG1	Black Gray/ Beige		77K		11K	23.63"	11.5" x 3.5"
C2BPCE1931BK1 C2BPCE1931CG1	Black Gray/ Beige		77K		11K	31.5" or 36"	18.5" x 6"

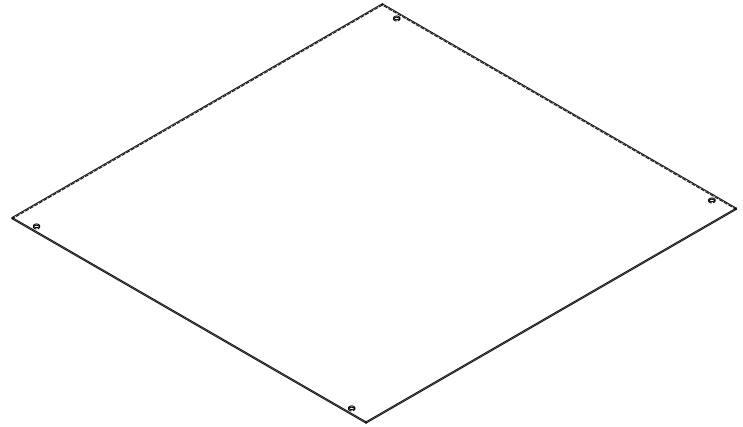
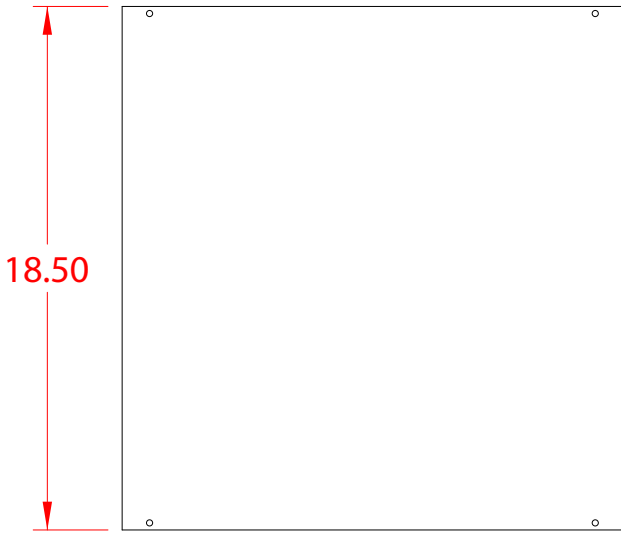
Solid Bottom

(For use when bottom of rack must be closed off.)

Part Number	Color		Drawing File Size		.zip File Size	Use With Rack Frame Depth
C2BPS1923BK1 C2BPS1923CG1	Black Gray/ Beige		77K		10K	23.63"
C2BPS1931BK1 C2BPS1931CG1	Black Gray/ Beige		77K		10K	31.5" or 36"



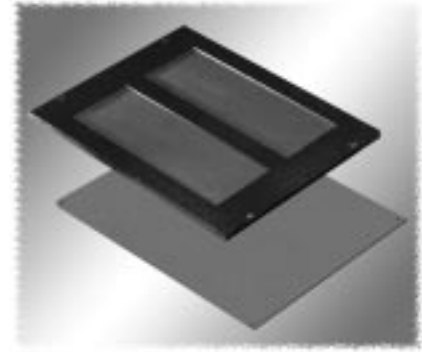
PART No. C2BPS1931



Bottom Options (C2 Series)

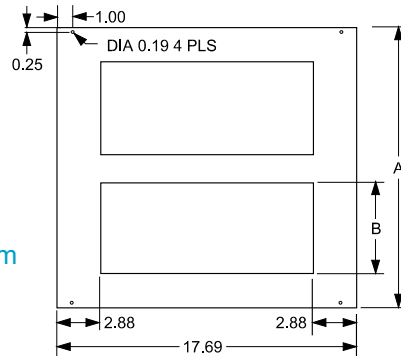
FRAME BOTTOMS

- 14 gauge steel construction
- Micro Cell Cable Entry Bottom features 2 cutouts for cable access. Under side of cutouts covered with black foam rubber which, when punctured for cable access, still maintains a virtually sealed bottom
- Mounting hardware included



Micro Cell Cable Entry or Solid Steel (pictured top to bottom)

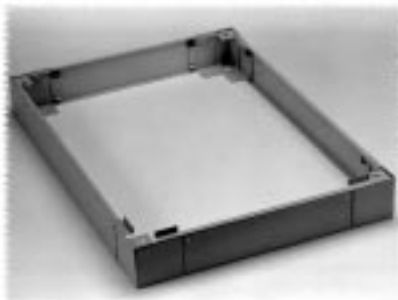
Micro Cell Cable Entry Bottom



Part Number		Type	Dimensions (Inches)			
Black Textured	Beige Textured		Panel Width	A	B	Rack Depth
C2BPS1923BK1	C2BPS1923CG1	Solid	19	11.5	-	23.63
C2BPS1931BK1	C2BPS1931CG1	Solid	19	18.5	-	31.50 or 36.00
C2BPCE1923BK1	C2BPCE1923CG1	Cable Entry	19	11.5	3.5	23.63
C2BPCE1931BK1	C2BPCE1931CG1	Cable Entry	19	18.5	6.0	31.50 or 36.00

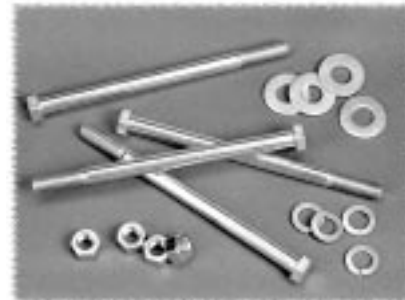
19" Rack Mount

PLINTH



- Adds 4" to overall rack height
- 14 gauge steel construction
- Features 4 corner units and 4 removable fill panels
- By removing both front & rear panels, easy access to bottom cabling and forklift lifting/transport are achieved
- Not compatible with levelling feet or casters

BOLT DOWN KIT



- Fixes rack to floor
- Kit includes set of four - 3/8" x 5 1/2" bolts with flat washers and nuts
- Can be used with or without plinths
- Part Number: **CBDK4**

Welded

Part Number		Panel Width	Use with Frame Depth
Black Textured	Beige Textured		
CPL19423BK1	CPL19423CG1	19"	23.63"
CPL19431BK1	CPL19431CG1	19"	31.50"
CPL19436BK1	CPL19436CG1	19"	36.00"