

## N1A Series Panel Enclosure NEMA 1



### Application

- Designed for indoor use to house controls, instruments and components not requiring oil-tight or dust-tight protection.

### Standards

- UL 50 Type 1 on models marked<sup>1</sup>
- CSA Type 1
- **Complies with**
  - NEMA Type 1
  - IEC 529, IP30

### Construction

- Enclosure is formed and spot welded from 14 gauge steel.
- Removable 12 or 14 gauge inner panel is mounted in the rear of the enclosure on collar studs.
- Removable door is mounted on slip hinges.
- Door is fastened with a slotted quarter turn latch; doors 30" and higher are provided with two latches.
- A bonding stud is provided on the door and a grounding stud is provided in the box.
- Mounting holes are provided in the rear of the enclosure.

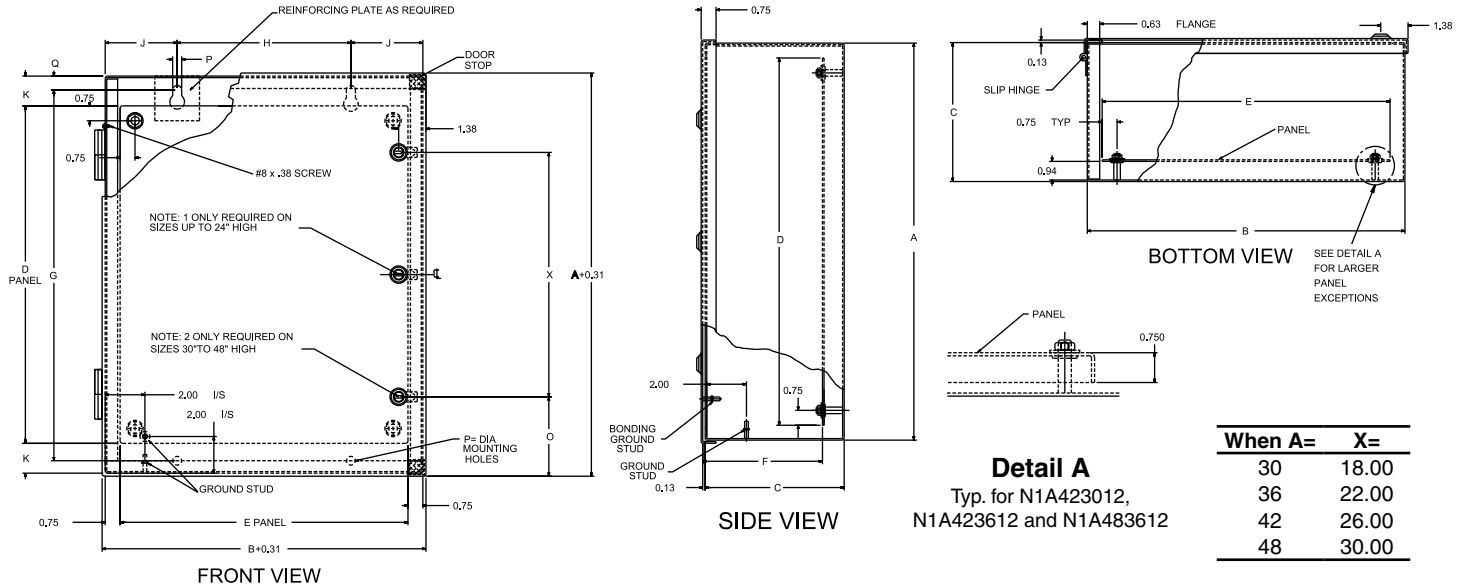
### Finish

- Enclosure and door are finished in ANSI/ASA 61 gray powder coating.
- Inner panel is finished in white powder coating.

### Accessories

- Additional inner panels  
...see E4 page 385
- Lock kit for NEMA 1 enclosures (Part No. 1427LKN1)...see E4 page 379
- Louvered ventilating plates  
...see E4 page 396
- Window kits...see E4 page 391
- Padlock Adaptor (Part No. EJPA)  
...see E4 page 383

# N1A Series Panel Enclosure NEMA 1



Part No.	Dimensions			Panel Size		Panel No. of Gauge Studs	Mounting Dimensions				Panel Clearance			Ship Wt. lbs		
	A	B	C	D	E		G	H	J	Q	P	F	K		O	
N1A16127 <sup>1,2</sup>	16	12	7	13	10.50	14	4	13.88	7.00	2.50	1.06	0.31	6.04	1.5	—	25
N1A16167 <sup>1,2</sup>	16	16	7	13	14.50	14	4	13.88	11.00	2.50	1.06	0.31	6.04	1.5	—	30
N1A16207 <sup>1,2</sup>	16	20	7	13	18.50	14	4	13.88	15.00	2.50	1.06	0.31	6.04	1.5	—	36
N1A20167 <sup>1,2</sup>	20	16	7	17	14.50	14	4	17.88	11.00	2.50	1.06	0.31	6.04	1.5	—	37
N1A20207 <sup>1,2</sup>	20	20	7	17	18.50	14	4	17.88	15.00	2.50	1.06	0.31	6.04	1.5	—	43
N1A24167 <sup>1,2</sup>	24	16	7	21	14.50	14	4	21.88	11.00	2.50	1.06	0.31	6.04	1.5	—	43
N1A24207 <sup>1,2</sup>	24	20	7	21	18.50	14	4	21.88	15.00	2.50	1.06	0.31	6.04	1.5	—	51
N1A24247 <sup>1,2</sup>	24	24	7	21	22.50	12	4	21.88	19.00	2.50	1.06	0.31	6.01	1.5	—	67
N1A30207 <sup>1,2</sup>	30	20	7	26	18.50	12	6	27.50	12.75	3.63	1.25	0.44	6.01	2.0	6.16	67
N1A30247 <sup>1,2</sup>	30	24	7	26	22.50	12	6	27.50	16.75	3.63	1.25	0.44	6.01	2.0	6.16	80
N1A36247 <sup>1,2</sup>	36	24	7	32	22.50	12	6	33.50	16.75	3.63	1.25	0.44	6.01	2.0	7.16	94
N1A36307 <sup>2</sup>	36	30	7	32	28.50	12	8	33.50	22.75	3.63	1.25	0.44	6.01	2.0	7.16	114
N1A16129 <sup>1,2</sup>	16	12	9	13	10.50	14	4	13.88	7.00	2.50	1.06	0.31	8.04	1.5	—	27
N1A20169 <sup>1,2</sup>	20	16	9	17	14.50	14	4	17.88	11.00	2.50	1.06	0.31	8.04	1.5	—	31
N1A20209 <sup>1,2</sup>	20	20	9	17	18.50	14	4	17.88	15.00	2.50	1.06	0.31	8.04	1.5	—	47
N1A20249 <sup>1,2</sup>	20	24	9	17	22.50	14	4	17.88	19.00	2.50	1.06	0.31	8.04	1.5	—	55
N1A24209 <sup>1,2</sup>	24	20	9	21	18.50	14	4	21.88	15.00	2.50	1.06	0.31	8.04	1.5	—	55
N1A24249 <sup>1,2</sup>	24	24	9	21	22.50	12	4	21.88	19.00	2.50	1.06	0.31	8.01	1.5	—	125
N1A30209 <sup>1,2</sup>	30	20	9	26	18.50	12	6	27.50	12.75	3.63	1.25	0.44	8.01	2.0	6.16	72
N1A30249 <sup>1,2</sup>	30	24	9	26	22.50	12	6	27.50	16.75	3.63	1.25	0.44	8.01	2.0	6.16	85
N1A30309 <sup>2</sup>	30	30	9	26	28.50	12	8	27.50	22.75	3.63	1.25	0.44	8.01	2.0	6.16	102
N1A36249 <sup>1,2</sup>	36	24	9	32	22.50	12	6	33.50	16.75	3.63	1.25	0.44	8.01	2.0	7.16	107
N1A36309 <sup>2</sup>	36	30	9	32	28.50	12	8	33.50	22.75	3.63	1.25	0.44	8.01	2.0	7.16	120
N1A42249 <sup>1,2</sup>	42	24	9	38	22.50	12	6	39.50	16.75	3.63	1.25	0.44	8.01	2.0	8.16	111
N1A242012 <sup>1,2</sup>	24	20	12	21	18.50	14	4	21.88	15.00	2.50	1.06	0.31	11.04	1.5	—	61
N1A242412 <sup>1,2</sup>	24	24	12	21	22.50	12	4	21.88	19.00	2.50	1.06	0.31	11.01	1.5	—	132
N1A302412 <sup>1,2</sup>	30	24	12	26	22.50	12	6	27.50	16.75	3.63	1.25	0.44	11.01	2.0	6.16	94
N1A363012 <sup>2</sup>	36	30	12	32	28.50	12	8	33.50	22.75	3.63	1.25	0.44	11.01	2.0	7.16	129
N1A423012	42	30	12	38	28.50	12	8	39.50	22.75	3.63	1.25	0.44	11.01	2.0	8.16	144
N1A423612	42	36	12	38	34.50	12	8	39.50	28.75	3.63	1.25	0.44	11.01	2.0	8.16	169
N1A483612	48	36	12	44	34.50	12	8	45.50	28.75	3.63	1.25	0.44	11.01	2.0	9.16	197

<sup>1</sup> UL 50 Listed Type 1

<sup>2</sup> Flat Panel