

Type 1 Mild Steel Component Case *1416 Series*

Ventilated Cover with Screws

Application



- Designed to provide mechanical protection for components requiring ventilation.
- Suitable for use where heat dissipation is required.

Standards

- Complies with
 - NEMA Type 1

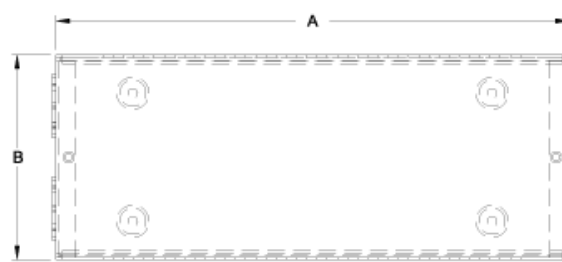
Construction

- Base is formed from 16 gauge steel with two 0.5"/0.75" conduit knockouts located in each end.
- Four .125" high raised dimples with mounting holes are provided on the base.
- Cover is formed from 18 gauge steel with 0.235" x 1.5" ventilating slots (0.199" x 1.12" on E & G only).
- Screw holes and offsets in the cover allow easy assembly.

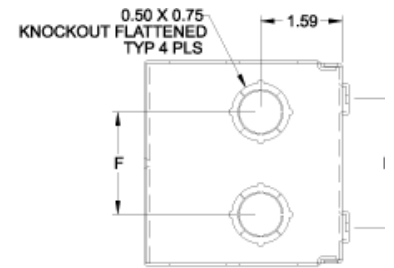


Finish

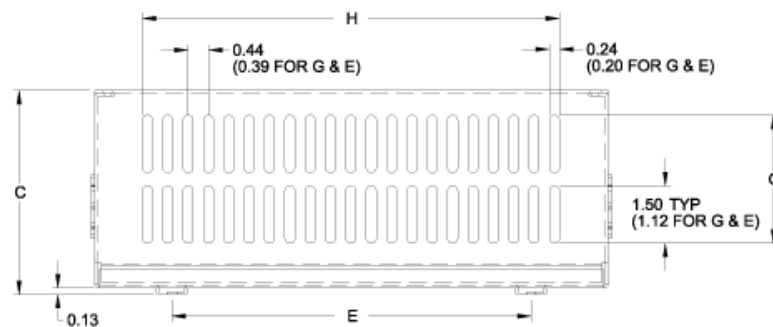
- Base and cover are finished in ANSI 61 gray powder coating.



Top View



Side View



Front View

Part No.	Dimensions						Ventilated Area		Ship Wt. (Lbs)
	A	B	C	D	E	F	G	H	
1416E	6.00	4.00	4.00	2.50	4.00	2.00	2.50	4.06	2
1416G	10.00	4.00	4.00	2.50	7.00	2.00	2.50	8.31	2
1416I	10.00	6.00	6.00	4.50	7.00	3.00	3.25	7.68	4
1416K	11.00	7.00	7.00	5.50	8.00	4.00	5.00	7.68	6
1416M	12.00	8.00	8.00	6.50	9.00	5.00	5.00	10.31	8
1416O	15.00	10.00	8.00	8.50	12.00	6.00	5.00	12.93	10
1416Q	20.00	10.00	8.00	8.50	17.00	6.00	5.00	18.18	12
1416T	20.00	10.00	10.00	8.50	17.00	6.00	6.75	15.56	14

Data subject to change without notice

© 2015. Hammond Manufacturing Ltd. All rights reserved.