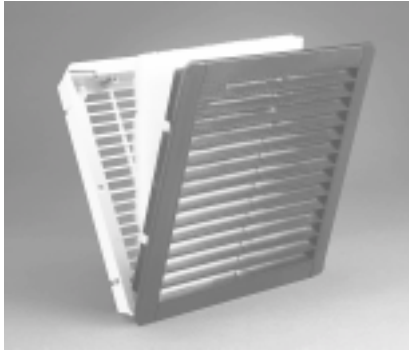


## Fan Accessories



### Exhaust Filters

- Built to IP54 standards (except PFA1000 - IP43 standards).
- ABS-FR grills (except PF1000 Series which is polystyrene FR).
- Self-extinguishing, re-usable filter mat.
- Grills are black to complement all cabinet colors.
- Grills also available (see below)
- Integral gasket seals against enclosure.

Part No.	Filter Density (g/m <sup>2</sup> )	Filtering Level	Comparable IP Standard
<b>PFA1000</b>	150	73%	IP43
<b>PFA2000</b>	150	73%	IP54
<b>PFA3000</b>	150	73%	IP54
<b>PFA5000</b>	150	73%	IP54



### Replacement Grill

- Packaged individually.
- Consists of replacement grill only.

Black Part No.	RAL7032 Beige Part No.	Use With Filter Fan	Use With Exhaust Filter
<b>PG1BK</b>	<b>PG1RAL</b>	PF1000	PFA1000
<b>PG2BK</b>	<b>PG2RAL</b>	PF2000	PFA2000
<b>PG3BK</b>	<b>PG3RAL</b>	PF2500/PF3000	PFA3000
<b>PG5BK</b>	<b>PG5RAL</b>	PF5000/PF6000	PFA5000



### Replacement Filters

- Packaged in quantities of 5.
- Made of self-extinguishing synthetic fibers.

Part No.		Dimensions		Use With Filter Fan	Filter Density (g/m <sup>2</sup> )
		A	B		
<b>PFF1000</b>	inch	3.40	3.40	PF1000	150
	mm	85	85		
<b>PFF2000</b>	inch	4.50	4.50	PF2000	350
	mm	115	115		
<b>PFF3000</b>	inch	8.30	8.30	PF2500/PF3000	350
	mm	210	210		
<b>PFF5000</b>	inch	11.00	11.00	PF5000/PF6000	350
	mm	280	280		