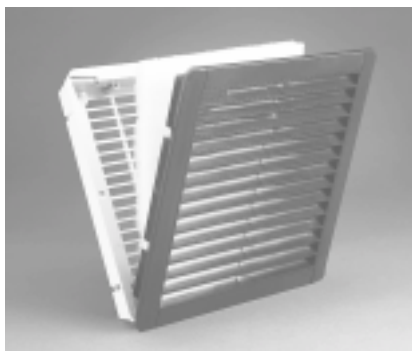


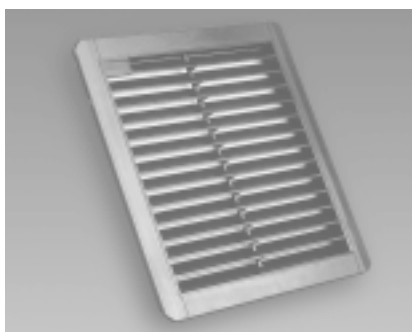
Fan Accessories



Exhaust Filters

- Built to IP54 standards (except PFA1000 - IP43 standards).
- ABS-FR grills (except PF1000 Series which is polystyrene FR).
- Self-extinguishing, re-usable filter mat.
- Grills are black to complement all cabinet colors.
- Grills also available (see below)
- Integral gasket seals against enclosure.

Part No.	Filter Density (g/m ²)	Filtering Level	Comparable IP Standard
PFA1000	150	73%	IP43
PFA2000	150	73%	IP54
PFA3000	150	73%	IP54
PFA5000	150	73%	IP54



Replacement Grill

- Packaged individually.
- Consists of replacement grill only.

Black Part No.	RAL7032 Beige Part No.	Use With Filter Fan	Use With Exhaust Filter
PG1BK	PG1RAL	PF1000	PFA1000
PG2BK	PG2RAL	PF2000	PFA2000
PG3BK	PG3RAL	PF2500/PF3000	PFA3000
PG5BK	PG5RAL	PF5000/PF6000	PFA5000



Replacement Filters

- Packaged in quantities of 5.
- Made of self-extinguishing synthetic fibers.

Part No.		Dimensions		Use With Filter Fan	Filter Density (g/m ²)
		A	B		
PFF1000	inch	3.40	3.40	PF1000	150
	mm	85	85		
PFF2000	inch	4.50	4.50	PF2000	350
	mm	115	115		
PFF3000	inch	8.30	8.30	PF2500/PF3000	350
	mm	210	210		
PFF5000	inch	11.00	11.00	PF5000/PF6000	350
	mm	280	280		