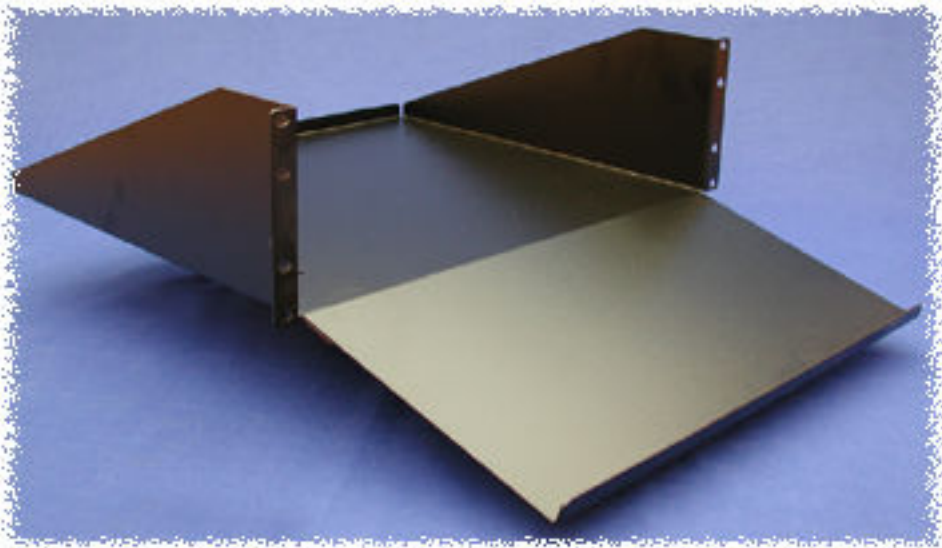


Path: [Home](#) > [Rack Index](#) > Keyboard Shelves & Drawers

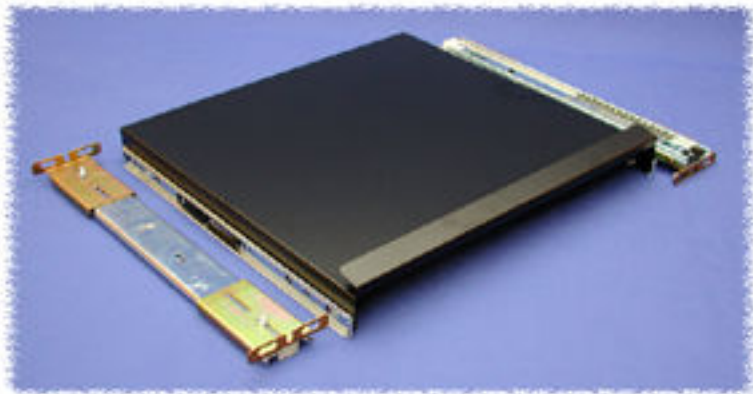
### Panel Rail Mounted Keyboard/Monitor Shelf



- Mounts to single pair of panel rails using 5.25" (3U) of vertical panel space
- Extends 15" back from front panel
- Slanted keyboard section is 8.5"
- Rear lip to reduce chance of monitor being pushed off rear of shelf
- Available in either 19" or 23" rack panel width
- 14 Ga. steel construction
- Finished in rugged black textured powder paint
- Requires mounting [hardware](#)

Part Number	Color		Drawing File Size		.zip File Size	Panel Width
<b>RKBM19BK1</b>	Black		15K		21K	<b>19"</b>
<b>RKBM23BK1</b>	Black		15K		21K	<b>23"</b>

**Note:** Weight load tested (RKBM23BK1) to 160 pounds.



(click to enlarge)



Assembly  
Instructions

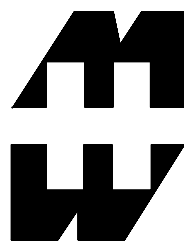
## Dual Rail Mounted Keyboard Drawer

- Standard 19" or 24" rack mount available
- Supplied as shown complete with two slides and mounting hardware
- Mounts to front & rear panel rails of racks
- Uses only 3.5" of panel space
- Unique design maximizes available space between rails (17.77")
- Rugged textured black powder paint finish
- **MOUNTS ON TWO PAIR OF PANEL RAILS (FRONT & BACK)**

Part Number	Color		Drawing File Size		.zip File Size	Panel Width	Shelf Depth
<b>RAKS19BK1</b>	Black		26K		41K	<b>19"</b>	15"
<b>RAKS24BK1</b>	Black		25K		41K	<b>24"</b>	15"

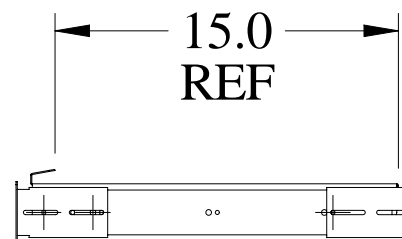
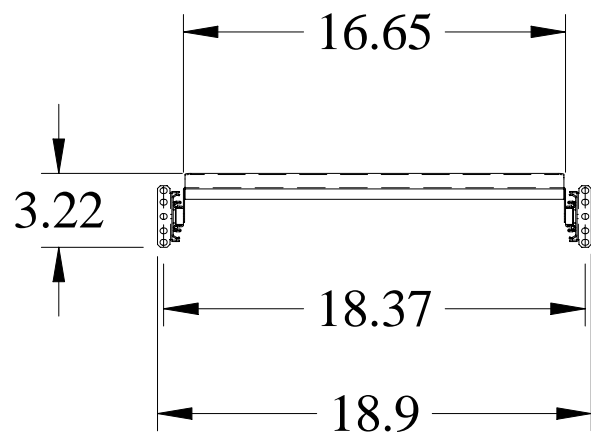
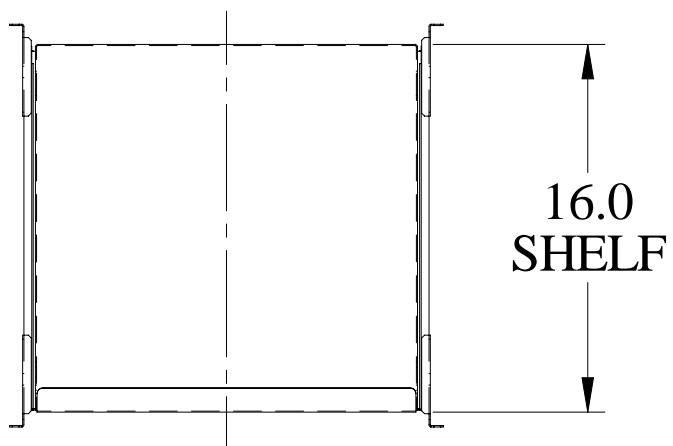
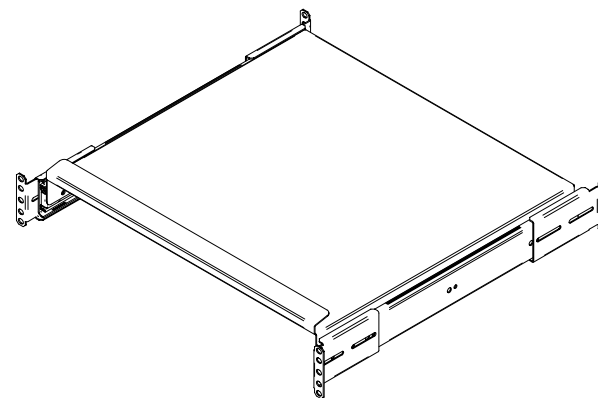
**Note:** Weight load tested (RAKS24BK1) to 120 pounds.

---



PART No. RAKS19BK1

SHELF EXTENDS 16" ON INCLUDED SLIDES



# Keyboard Shelves

## RAIL MOUNT KEYBOARD/MONITOR SHELF

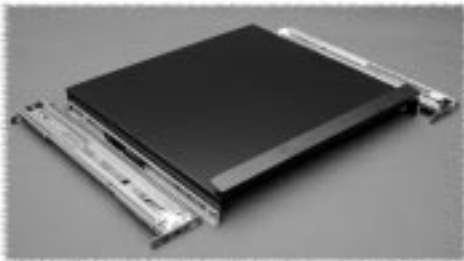


- Standard 19" rack mount
- Mounts to panel rails using 5.25" (3U) of vertical panel space
- Extends 15" back from front panel
- Slanted keyboard section is 8.5"
- Rear lip to reduce chance of monitor being pushed off rear of shelf
- Available in either 19" or 23" rack panel width
- 14 Ga. steel construction
- Weight load tested to 160 pounds
- Finished in rugged black textured powder paint
- Requires mounting hardware



Part Number	Panel Width
<a href="#">RKBM19BK1</a>	19"
<a href="#">RKBM23BK1</a>	23"

## KEYBOARD DRAWER (DUAL RAIL MOUNT)



- Standard 19" or 24" rack mount
- Supplied as shown complete with two slides and mounting hardware
- Mounts to front & rear panel rails of racks
- Uses only 3.5" (2U) of panel space
- Weight load tested to 120 pounds
- Unique design maximizes available space between rails (17.77")
- Rugged textured black powder paint finish
- **MOUNTS ON TWO PAIR OF MOUNTING RAILS (FRONT & BACK)**

Part Number	Panel Width	Shelf Depth
<a href="#">RAKS19BK1</a>	19"	15"
<a href="#">RAKS24BK1</a>	24"	15"

## SWIVEL KEYBOARD DRAWER (DUAL RAIL MOUNT)



- Standard 19" rack mount
- Supplied complete with two slides and mounting hardware (keyboard not included)
- Mounts to front & rear rack mount rails
- Uses only 5.25" (3U) of panel space
- Unique design allows the use of full size keyboards (not included) in a 19" rack
- Top tray of drawer swivels clockwise 90 degrees, once pulled outside the front of the rack.
- Rugged textured black powder paint finish
- **MOUNTS ON TWO PAIR OF MOUNTING RAILS (FRONT & BACK)**

Part Number	Panel Width	Shelf Depth
<a href="#">RSKS19005BK1</a>	19"	15"