



## XP

<b>Type</b>	<ul style="list-style-type: none"> <li>• Switches</li> </ul>
<b>Product type</b>	<ul style="list-style-type: none"> <li>• Burgess Double Break Momentary Switch</li> </ul>
<b>Typical markets</b>	<ul style="list-style-type: none"> <li>• business machines</li> <li>• building automation &amp; security</li> <li>• industrial equipment &amp; automation</li> <li>• leisure &amp; fitness</li> <li>• distribution</li> </ul>
<b>Typical applications</b>	<ul style="list-style-type: none"> <li>• copiers</li> <li>• printers</li> <li>• doors, building entrances</li> <li>• industry general</li> <li>• alarm devices</li> <li>• gaming machines</li> <li>• vending machines</li> <li>• local catalog distributors</li> </ul>
<b>Dimensions</b>	<ul style="list-style-type: none"> <li>• 30 x 32 x 12 mm</li> </ul>
<b>Characteristics</b>	<ul style="list-style-type: none"> <li>• double break switching</li> <li>• positive-action force break (option)</li> <li>• &gt; 3 mm contact gap at full travel (option)</li> <li>• faston terminals</li> </ul>
<b>Rating</b>	<ul style="list-style-type: none"> <li>• 400 VAC, 16 A</li> </ul>



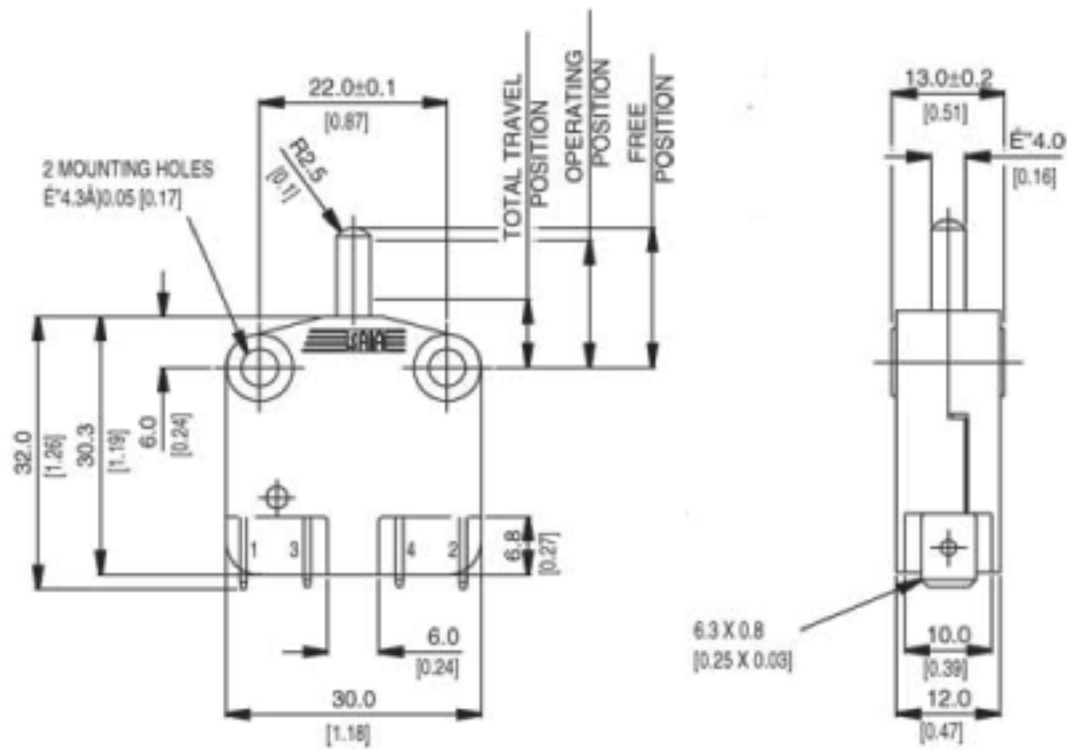
## Actuators

- plain plunger
- mushroom plunger reset
- plunger with external spring (for increased reset security)

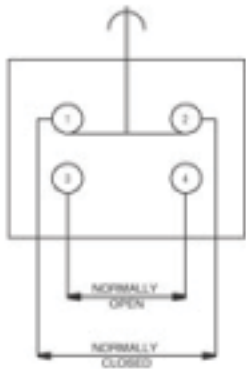
## Approvals/Quality

- ENEC
- UL
- CSA

## Dimensions



## Circuits



## Performance

## Preferred range

Partnumber	Terminal	Actuator	Electrical rating @	
			ENEC	UL/CSA
<u>XP2Z11</u>	faston 6.3 x 0.8 mm	plunger	250 VAC 16 A	250 VAC 16 A
<u>XP42Z11</u>	faston 6.3 x 0.8 mm	plunger	250 VAC 16 A	250 VAC 16 A
<u>XP52Z11</u>	faston 6.3 x 0.8 mm	plunger	250 VAC 16 A	250 VAC 16 A
<u>XP52E1Z11</u>	faston 6.3 x 0.8 mm	mushroom plunger reset	250 VAC 16 A	250 VAC 16 A
<u>XP2E2Z11</u>	faston 6.3 x 0.8 mm	mushroom plunger	250 VAC 16 A	250 VAC 16 A
<u>XPS42E1Z11</u>	faston 6.3 x 0.8 mm	mushroom plunger reset	250 VAC 16 A	250 VAC 16 A



## XP52E1Z11

<b>Dimensions</b>	30 mm
<b>Dimensions</b>	32 mm
<b>Dimensions</b>	12 mm
<b>Terminal</b>	faston 6.3 x 0.8 mm
<b>Circuit</b>	NO
<b>Protection</b>	IP40
<b>Actuator</b>	mushroom plunger reset
<b>Contacts</b>	Ag
<b>Electrical rating ENEC</b>	250 VAC
<b>Electrical rating UL/CSA</b>	250 VAC
<b>Actuating force</b>	6.5 Nm
<b>Release force</b>	9 N
<b>Free position (FP)</b>	16.6 mm
<b>Operating position (OP)</b>	13 mm
<b>Total travel position (TP)</b>	10.5 mm
<b>Overtravel</b>	2.1 mm