

Powerpole® connectors provide cost-effective reliability, design flexibility and safety for your products' manufacture, installation and maintenance. Powerpoles are stackable and color-coded for easy customization into multipole blocks.

The housings are modular and genderless. Powerpole® connectors provide 600 Volts continuous AC or DC operation. Wire sizes range from #2 to #8 AWG (33.6 to 8.4 mm²). Low-detent contacts are also offered for low insertion/withdrawal force applications.

FEATURES

- **Flat wiping contact system**

Minimal contact resistance at high current, wiping action cleans contact surface during connection/disconnection

- **Colored modular housings**

Provides visual identification of proper mating connector

- **Molded-in dovetails**

Secures individual connectors into "keyed" assemblies which prevents misconnection with similar configurations



PRODUCT SPECIFICATIONS

Connector Model	PP120	Connector Model	PP120
UL Current Rating (Amperes)*	120*	Life	
UL Voltage Ratings (Volts)**	600*	a. No load (Contact/Disconnect Cycles)	To 10,000
Contact Barrel Wire Size (AWG)	#2 to #8	b. Under Load (Hot Plug 250 cycles @ 120V)	60A
(mm ²)	33.6 to 8.4	Avg. Connection/Disconnect (lbs)	8
Maximum Wire Insulation Diameter (inches)	0.600	Operating Temperature Range °C***	-20° to 105°
(mm)	15.24	°F	-4° to 221°
AVG Contact Resistance* (micro-ohms)	136	Flammability Rating of Housing Material	UL94 V-0
Insulation Withstanding Test Voltage (Volts AC/DC)	2200		
Contact Retention Force (lbs)	100		

* UL Rated for 65°C rated wire or cable size
 ** Both AC & DC Voltage
 *** Contact factory for higher temperature rated connectors

ORDERING INFORMATION

Housing & 120 amp Contact

Part Number	Housing Color	Wire	
		AWG	sq. mm
1320	Blue	#2	33.6
1320G1	Black	#2	33.6
1320G2	White	#2	33.6
1320G3	Red	#2	33.6
1320G4	Green	#2	33.6

120 amp Contacts

Part Number	Description	Wire	
		AWG	sq. mm
1319	Individual, low detent	#2	33.6
1319G4	Individual, low detent	#4	21.2
1319G6	Individual, low detent	#6	13.3
6811G4*	Contact set (2), low detent	#6	13.3
6811G5*	Contact set (2), low detent	#4	21.2
6811G6*	Contact set (2), low detent	#2	33.6

Housings Only

Part Number	Description
1321	Blue housing
1321G1	Black housing
1321G2	White housing
1321G3	Red housing
1321G4	Green housing

Bushings

Part Number	Description	Wire	
		AWG	sq. mm
5919	Use with 1319	#2 to #4	33.6/21.2
5920	Use with 1319	#2 to #6	33.6/13.3
5921	Use with 1319	#2 to #8	33.6/8.4

Accessories

Part Number	Description
110G18	Retaining Pins, 2 high block of connectors
110G19	Retaining Pins, 1 high block of connectors
110G20	Retaining Pins, 2 high block of connectors

Tooling

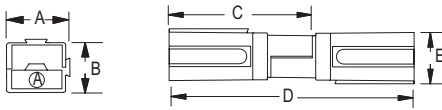
Part Number	Description
1368	Hydraulic tool, #2 to #8
1387G1	Pneumatic tool, #2 to #8
1388G4	- die for #2 to #8
1389G4	- locator #2 to #8

* offers lower extraction forces than our 1319 series.

DIMENSIONS

Powerpole® Housing

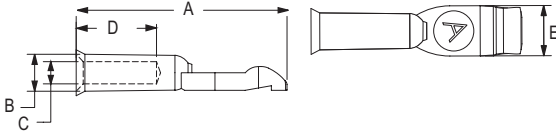
Series	-A- mm in.	-B- mm in.	-C- mm in.	-D- mm in.	-E- mm in.
PP120	22.2 .88	22.2 .88	69.9 2.75	117.5 4.63	23.7 0.94



Contact

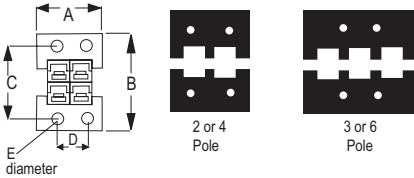
Part Number	-A- mm in.	-B- mm in.	-C- mm in.	-D- mm in.	-E- mm in.
1319	50.8 2.00	11.1 0.44	8.7 0.34	21.6 0.85	10.4 0.41
1319G4	50.8 2.00	11.1 0.44	7.5 0.30	21.6 0.85	10.4 0.41
1319G6	50.8 2.00	11.1 0.44	5.6 0.22	21.6 0.85	10.4 0.41
6811G4*	50.8 2.00	11.1 0.44	5.6 0.22	21.6 0.85	10.4 0.41
6811G5*	50.8 2.00	11.1 0.44	7.5 0.30	21.6 0.85	10.4 0.41
6811G6*	50.8 2.00	11.1 0.44	8.7 0.34	21.6 0.85	10.4 0.41

*Offers lower extraction forces than our 1319 series.



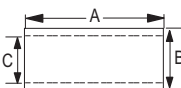
Mounting Clamps

Part Number	-A- mm in.	-B- mm in.	-C- mm in.	-D- mm in.	-E- mm in.	Number of Poles
1464G1	60.5 2.38	47.7 1.88	38.1 1.50	44.5 1.75	4.0 0.16	(2 Pole)
1464G1	60.5 2.38	70.0 2.75	60.3 2.37	44.5 1.75	4.0 0.16	(4 Pole)
1464G2	82.6 3.25	47.7 1.88	38.1 1.50	66.7 2.63	4.0 0.16	(3 Pole)
1464G2	82.6 3.25	70.0 2.75	60.3 2.37	66.7 2.63	4.0 0.16	(6 Pole)



Bushings - (for use with 1319 contacts)

Part Number	Reduces From	-A- mm in.	-B- mm in.	-C- mm in.
5919	#2 to #4 AWG	21.3 .84	8.4 .33	7.2 .29
5920	#2 to #6 AWG	21.3 .84	8.4 .33	5.8 .23
5921	#2 to #8 AWG	21.3 .84	8.4 .33	4.6 .18



TEMPERATURE RISE CHARTS

