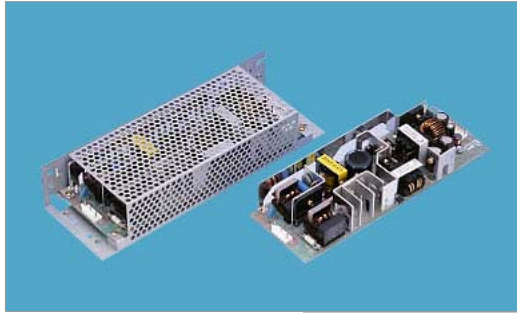


LEB100F



Features

- Harmonic attenuator, PFC (Complies with IEC61000-3-2)
- Universal input (AC85-264V)
- Remote ON/OFF Control (Optional)
- Rugged PCB type
- RoHS Compliant

Safety Agency Approvals

- Complies with DEN-AN
- UL1950, C-UL recognized, TUV approved

EMI Compliance

- FCC-B
- CISPR22-B
- EN55022-B
- VCCI-B

CE Markings

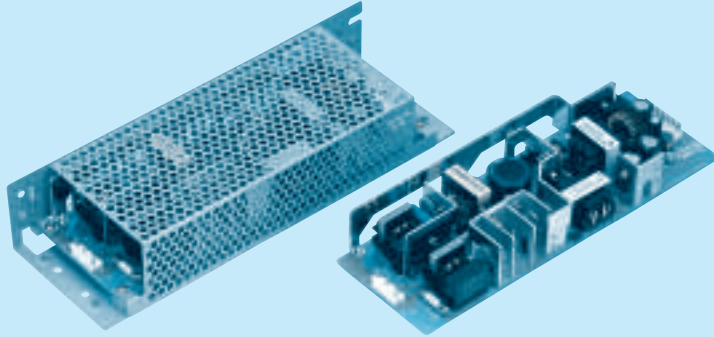
- Low Voltage Directive
- EMC Directive

EMC Compliance

- EN61000-4-2
- EN61000-4-3
- EN61000-4-4
- EN61000-4-5
- EN61000-4-6
- EN61000-4-8
- EN61000-4-11
- EN55022-B
- EN61000-3-2

2 year warranty(refer to Instruction Manual)

Model	Input Voltage [V]	Output Wattage [W]	DC Output [V/A]
LEB100F-0512	DC 120 - 370 AC 85 - 264	85 (peak 145)	5 - 12V 5A (peak 10A)
LEB100F-0324	DC 120 - 370 AC 85 - 264	100 (peak 172)	3.3 - 24V 4 - 5A (peak 7A)
LEB100F-0524	DC 120 - 370 AC 85 - 264	100 (peak 172)	5 - 24V 4 - 5A (peak 7A)
LEB100F-0530	DC 120 - 370 AC 85 - 264	100 (peak 172)	5 - 30V 3.2 - 5A (peak 5.6A)
LEB100F-0536	DC 120 - 370 AC 85 - 264	100 (peak 172)	5 - 36V 2.7 - 5A (peak 4.7A)



Recommended Noise Filter
NAC-06-472



High voltage pulse noise type : NAP series
Low leakage current type : NAM series
*The Noise Filter is recommended to connect with several devices.

- ① Series name
- ② Output wattage
- ③ Universal input
- ④ V1 Output voltage
- ⑤ V2 Output voltage
- ⑥ Optional *1
- G : Low leakage current
- R : with Remote ON/OFF
- S : with Chassis
- SN : with Chassis & cover
- T : Vertical terminal block
- Y : with Potentiometer
- Z : with ZT

MODEL	LEB100F-0512	LEB100F-0324	LEB100F-0524	LEB100F-0530	LEB100F-0536
DC OUTPUT	V1 +5V 5A V2 +12V 5(Peak 10)A	+3.3V 5A +24V 4(Peak 7)A	+5V 5A +24V 4(Peak 7)A	+5V 5A +30V 3.2(Peak 5.6)A	+5V 5A +36V 2.7(Peak 4.7)A

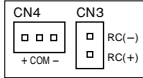
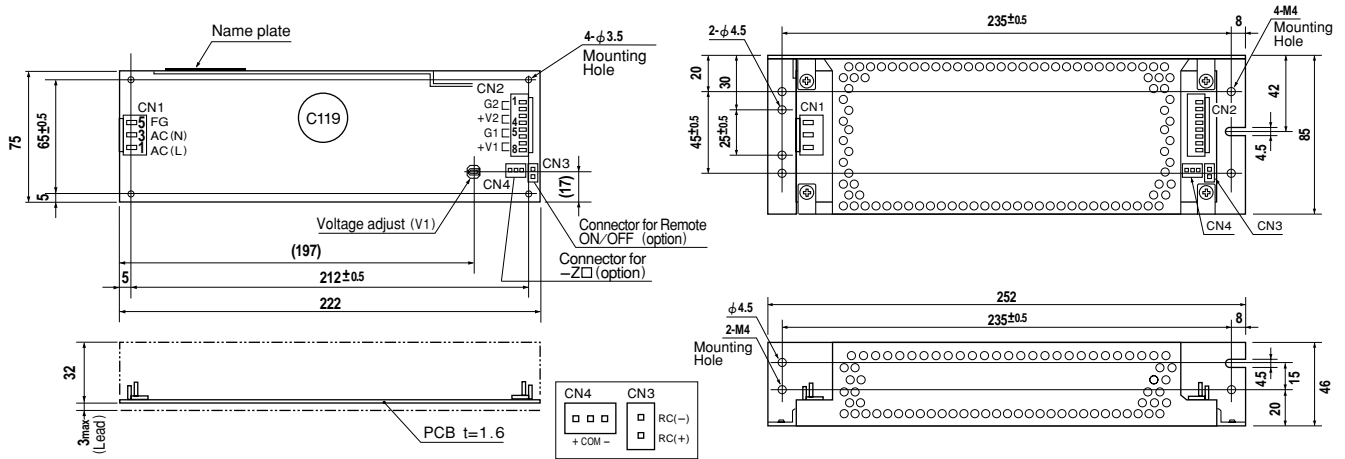
SPECIFICATIONS

MODEL	LEB100F-0512	LEB100F-0324	LEB100F-0524	LEB100F-0530	LEB100F-0536
INPUT	VOLTAGE[V] AC85 - 264 1 φ or DC 120 - 370				
	ACIN 100V	1.2typ (Io=100%)	1.4typ (Io=100%)		
	ACIN 200V	0.6typ (Io=100%)	0.7typ (Io=100%)		
	FREQUENCY[Hz] 50/60 (47 - 63) or DC				
	ACIN 100V	74typ (Io=100%)	78typ (Io=100%)	78typ (Io=100%)	78typ (Io=100%)
	ACIN 200V	76typ (Io=100%)	80typ (Io=100%)	80typ (Io=100%)	80typ (Io=100%)
	ACIN 100V	0.98typ	0.99typ		
	ACIN 200V	0.93typ			
	ACIN 100V	15typ (Io=100%) (At cold start) (Ta=25°C)			
	ACIN 200V	30typ (Io=100%) (At cold start) (Ta=25°C)			
	LEAKAGE CURRENT[mA] 0.75max (60Hz, According to IEC60950 and DEN-AN)				
OUTPUT	VOLTAGE[V]	+5 +12	+3.3 +24	+5 +24	+5 +30 +5 +36
	CURRENT[A]	*2 0 - 5 0 - 5 (Peak 10)	0 - 5 0 - 4 (Peak 7)	0 - 5 0 - 4 (Peak 7)	0 - 5 0 - 3.2 (Peak 5.6) 0 - 5 0 - 2.7 (Peak 4.7)
	TOTAL OUTPUT WATTAGE[W]	*3 85 (Peak 145)	100 (Peak 172)	100 (Peak 172)	100 (Peak 172)
	LINE REGULATION[mV]	20max 48max	20max 96max	20max 96max	20max 120max 20max 144max
	LOAD REGULATION[mV]	40max 100max	40max 150max	40max 150max	40max 180max 40max 180max
	RIPPLE[mVp-p]	0 to +50°C *4	80max 120max	80max 120max	80max 120max 80max 200max 80max 200max
		-10 - 0°C *4	140max 160max	140max 160max	140max 160max 140max 240max 140max 240max
	RIPPLE NOISE[mVp-p]	0 to +50°C *4	120max 150max	120max 150max	120max 150max 120max 300max 120max 300max
		-10 - 0°C *4	160max 180max	160max 180max	160max 180max 160max 360max 160max 360max
	TEMPERATURE REGULATION[mV]	0 to +50°C	50max 120max	50max 240max	50max 50max 50max 300max 50max 300max
		-10 to +50°C	60max 150max	60max 290max	60max 290max 60max 350max 60max 350max
	DRIFT[mV]	*5 20max 48max	20max 96max	20max 96max	20max 120max 20max 144max
	START-UP TIME[ms]	*6 250max 500max	250max 500max	250max 500max	250max 500max 250max 500max
	HOLD-UP TIME[ms]	*6 40typ 20typ	40typ 20typ	40typ 20typ	40typ 20typ 40typ 20typ 40typ 20typ
	OUTPUT VOLTAGE ADJUSTMENT RANGE[V]	4.5 - 5.5 Fixed	2.85 - 3.60 Fixed	4.5 - 5.5 Fixed	4.5 - 5.5 Fixed 4.5 - 5.5 Fixed 4.5 - 5.5 Fixed
	OUTPUT VOLTAGE SETTING[V]	— 11.5 - 12.5	— 23.0 - 25.0	— 23.0 - 25.0	— 28.7 - 31.5 — 34.5 - 37.5
PROTECTION CIRCUIT AND OTHERS	OVERCURRENT PROTECTION	V1 Works over 105% of rating current and recovers automatically V2 Works over 101% of peak current and recovers automatically			
	OVERVOLTAGE PROTECTION	V1 Works over 115% of rating, by zener diode clamping V2 Works at 115 - 140% of rating			
	REMOTE ON/OFF	Option (Refer to Instruction Manual)			
ISOLATION	INPUT-OUTPUT - RC	*7 AC3.000V 1minute, Cutoff current = 10mA, DC500V 50MΩ min (At Room Temperature)			
	INPUT-FG	AC2.000V 1minute, Cutoff current = 10mA, DC500V 50MΩ min (At Room Temperature)			
	OUTPUT - RC-FG	*7 AC500V 1minute, Cutoff current = 100mA, DC500V 50MΩ min (At Room Temperature)			
	OUTPUT-OUTPUT(V1 - RC-V2)	*7 AC100V 1minute, Cutoff current = 100mA, DC100V 10MΩ min (At Room Temperature)			
ENVIRONMENT	OPERATING TEMP., HUMID. AND ALTITUDE	-10 to +70°C, 20 - 90%RH (Non condensing) (Refer to DERATING CURVE), 3,000m (10,000feet) max			
	STORAGE TEMP., HUMID. AND ALTITUDE	-20 to +75°C, 20 - 90%RH (Non condensing), 9,000m (30,000feet) max			
	VIBRATION	10 - 55Hz, 19.6m/s ² (2G), 3minutes period, 60minutes each along X, Y and Z axis			
	IMPACT	196.1m/s ² (20G), 11ms, once each X, Y and Z axis			
SAFETY AND NOISE REGULATIONS	AGENCY APPROVALS	UL60950-1, C-UL, EN60950-1, EN50178 Complies with DEN-AN and IEC60950-1 (At only AC input)			
	CONDUCTED NOISE	Complies with FCC-B, CISPR22-B, EN55022-B, VCCI-B			
	HARMONIC ATTENUATOR	Complies with IEC61000-3-2			
OTHERS	CASE SIZE/WEIGHT	75 x 35 x 222mm (W x H x D) /420g max (without chassis and cover)			
	COOLING METHOD	Convection			

*1 Specification is changed at option, refer to Instruction Manual 5.
 *2 Peak loading for 10sec. And Duty 35% max, refer to Instruction Manual 4. In detail.
 *3 Refer to Instruction Manual 2.2 in detail.
 *4 This is the value that measured on measuring board with capacitor of 22 μF within 150mm from output terminal. Measured by 20MHz oscilloscope or Ripple-Noise meter (Equivalent to KEISOKU-GIKEN: RM101).
 *5 Drift is the change in DC output for an eight hour period after a half-hour warm-up at 25°C,

with the input voltage held constant at the rated input/output.
 *6 ACIN 100V, Io=100%
 *7 Applicable when remote control (optional) is added.
 Series/Parallel operation is not possible.
 Derating is required when operated with chassis and cover.
 * A sound may occur from power supply at peak loading.

External view



I / O Connector	Mating Connector	Terminal
CN1	B3P5-VH	VHR-5N
CN2	B8P-VH	VHR-8N
CN3 (Option)	B2B-XH-A	XHP-2
CN4 (Option)	B3B-XH-A	XHP-3

CN1

Pin No.	Input
1	AC(L)
2	
3	AC(N)
4	
5	FG

(PIN CONNECTION)

CN2

Pin No.	Output
1, 2	G 2
3, 4	V 2
5, 6	G 1
7, 8	V 1

CN3 (Option)

Pin No.	Remote ON/OFF
1	RC(+)
2	RC(-)

CN4 (Option)

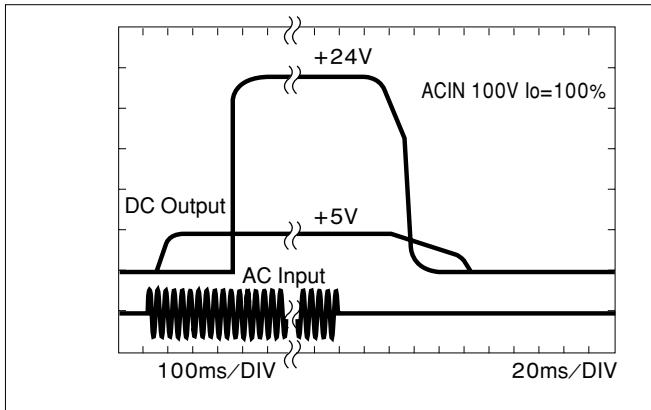
Pin No.	-Z □
1	+
2	COM
3	-

- ※Weight: 420g or less (Without chassis and cover)
- ※Tolerance: ±1
- ※Dimensions in mm.
- ※PCB Material : CEM3
- ※Chassis and cover is optional.
- ※Mounting torque: 1.5N · m(16kgf · cm)max

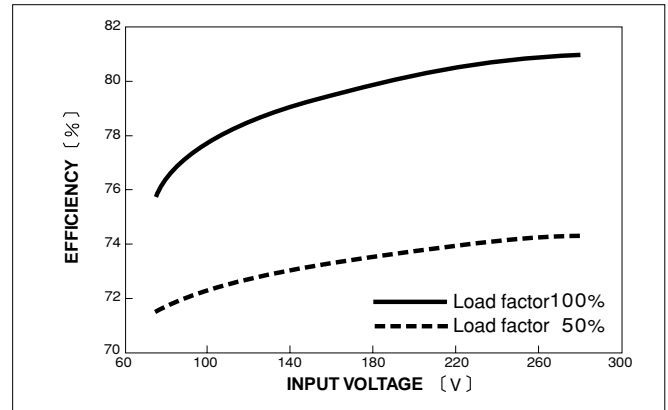
(Mfr: J.S.T.) ※Keep drawing current per pin below 5A for CN2

Performance data

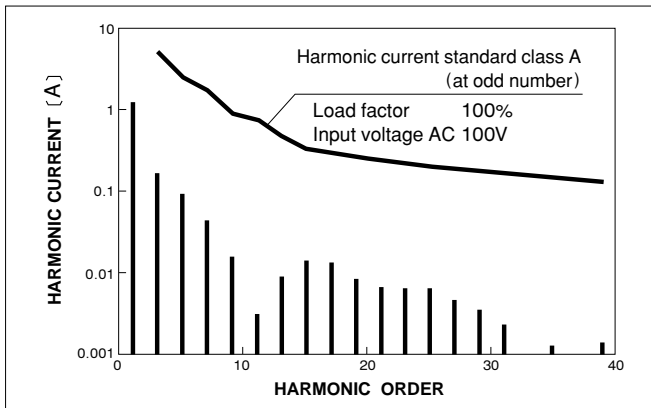
RISE TIME & FALL TIME (LEB100F-0524)



EFFICIENCY (LEB100F-0524)



INPUT HARMONIC CURRENT (LEB100F-0524)



INPUT HARMONIC CURRENT (LEB100F-0524)

