



**GLOBAL SPECIALTIES**

## Proto-Board® Design Workstation Series

### PB-204

#### Powered Proto-Board® Systems

- Current limited short-circuit proof power supplies
- Up to 24 14-pin DIP capacity
- All units include 5VDC, 1 AMP power supply
- Includes three QT-59S Quick Test socket strips; four QT-59B Quick Test bus strips; one QT-47B Quick Test bus strip
- Combines utility of a ProtoBoard with highly capable regulated DC power supplies
- 5 VDC, 1 Amp supply
- Separate +12/-12 VDC power supplies, each capable of 250mA
- Powered from external power pak

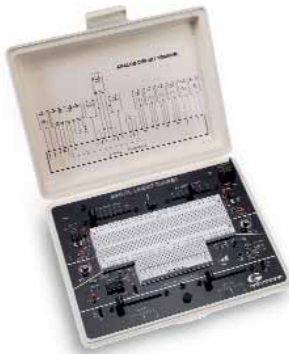


**PB-204**

Sockets	3/QT59S	Length	9.8 in (248mm)
Bus Strips	4/QT59B	Width	6.6 in (168mm)
	1/QT47B	Height	3.3 in (83mm)
IC Capacity	24	Powered	Yes
Terminals	450	Weight	5 lbs
Tie Points	2250	Part Number	104-2000
Binding Posts	4		
Backplate	Aluminum		

# Perfect for Educational Applications

## ANALOG CIRCUIT TRAINER



- ▶ Light Weight, Only 1 lb. 12 oz & Durable Case
- ▶ Power pack included
- ▶ 2 Slide Pots, 10K & 100K
- ▶ 2 SPDT Slide Switches
- ▶ 2 BNC Connectors
- ▶ 1 Speaker, 2", 8 Ohms

**PB-500**

## LOGIC DESIGN TRAINER



- ▶ 8 LED Logic Indicators, Dual Function
- ▶ Output Ports Also Supplied
- ▶ 840 Tie Point Breadboarding Area
- ▶ Battery operated
- ▶ Featuring Clock Output & Logic Pulsers (2 Debounced Switches)

**PB-501**

## ADVANCED LOGIC DESIGN TRAINER



- ▶ Two Fully Debounced Pushbuttons With True Logic Outputs
- ▶ TTL/CMOS Operation
- ▶ 8 SPST Logic Switches & Buffered LED Logic Indicators
- ▶ 7-Segment LCD Display
- ▶ 840 Tie Point Breadboard Area
- ▶ Power pack included

**PB-502**

## POWERED BREADBOARDS



- ▶ Separate +12/-12 VDC power supplies, each capable of 250mA
- ▶ Now with AC power input
- ▶ Rugged metal enclosure
- ▶ Limited lifetime guarantee on sockets

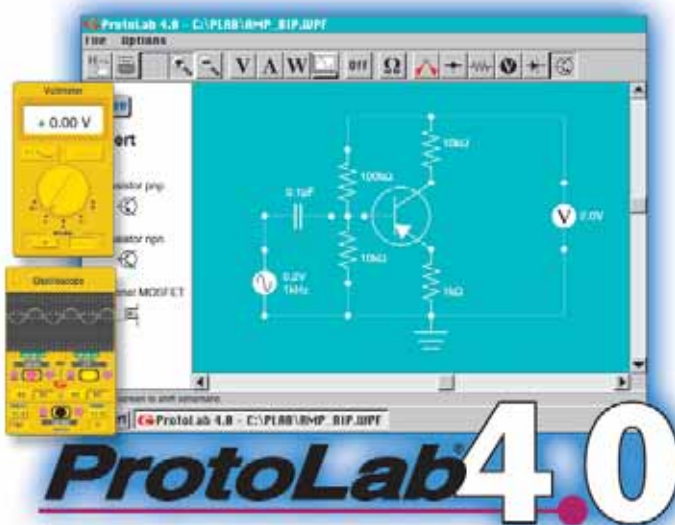
**PB204**



- ▶ Separate +5.5VDC / -5.5 - 18VDC power supply capable of 500mA @ 15VDC
- ▶ Factory pre-set power to  $\pm 15$ VDC
- ▶ Voltages adjustable internally
- ▶ AC power input
- ▶ Limited lifetime guarantee on sockets

**PB203A**

## PROTOLAB® 4.0 CIRCUIT DESIGN AND SIMULATION SOFTWARE



- ▶ Easy-to-use interface: Create AC & DC circuits moments after installation with ProtoLab's easy "click & drag" component placement
- ▶ Choose from a list of active and passive analog components
- ▶ Five virtual instruments allow for instant, accurate circuit analysis
- ▶ Pre-designed circuit library included
- ▶ Low cost
- ▶ For Windows® 98 or above



**PRO-S LAB**

- ▶ Includes Model PB-10 Proto-Board®
- ▶ DC power pack included
- ▶ Power connector
- ▶ 25 pre-cut jumper wires
- ▶ Perfect for students & small experiments