

Plastic Boxes PI series



[Click on Image for Larger View](#)

The line of molded enclosures is ideally suited for instrumentation and telecommunications equipment from hand held to desk top sizes. Available in twelve sizes and two versions.

Version #1 - Dark gray ABS covers with light gray ABS end panels. UL94V-0 flammability rating, suggested service temperature -40C to 80C

Version #2 - Light gray ABS covers with dark gray ABS end panels. UL94-HB flammability rating, suggested service temperature -40C to 80C

Design Features

- *Designed to IP 54 of IEC 529
- *Two part design with tongue and groove joint between top and bottom covers and specially designed end panels
- *Internal guide slots provide for vertical mounting of PCBs
- *Internal bosses provided for horizontal mounting of PCBs
- *Top and bottom covers are lightly textured providing a scratch-resistant high quality finish
- *Four screws are countersunk in the bottom cover and threaded into internal bosses which secure the top cover and end panels

PI Series

Version 1	Drawings	Version 2	Drawings	A	B	C	D	E	F	Size	Weight (Ozs.)
PI-1900	PDF DXF	PI-1900-LG	PDF DXF	.63"	1.97"	3.54"	.47"	1.64"	3.12"	.46"x 1.72"x .11"	1.7
PI-1901	PDF DXF	PI-1901-LG	PDF DXF	.94"	1.97"	3.54"	.78"	1.64"	3.12"	.77"x 1.72"x .11"	1.7
PI-1902	PDF DXF	PI-1902-LG	PDF DXF	1.26"	1.97"	3.54"	1.10"	1.64"	3.12"	1.09"x 1.72"x .11"	2.2
PI-1903	PDF DXF	PI-1903-LG	PDF DXF	1.18"	2.36"	4.72"	1.02"	1.99"	4.25"	.93"x 1.95"x .13"	2.7
PI-1904	PDF DXF	PI-1904-LG	PDF DXF	1.57"	2.36"	4.72"	1.41"	1.99"	4.25"	1.32"x 1.95"x .13"	3.2

PI-1905	PDF DXF	PI-1905-LG	PDF DXF	1.97"	2.36"	4.72"	1.81"	1.99"	4.25"	1.72"x 1.95"x .13"	4.0
PI-1906	PDF DXF	PI-1906-LG	PDF DXF	1.18"	3.15"	5.91"	1.02"	2.78"	5.46"	.93"x 2.74"x .13"	4.5
PI-1907	PDF DXF	PI-1907-LG	PDF DXF	1.77"	3.15"	5.91"	1.61"	2.78"	5.46"	1.52"x 2.74"x .13"	5.2
PI-1908	PDF DXF	PI-1908-LG	PDF DXF	2.36"	3.15"	5.91 "	2.20"	2.78"	5.46"	2.11 "x 1.66"x .13"	5.5
PI-1909	PDF DXF	PI-1909-LG	PDF DXF	1.57"	3.94"	7.48"	1.41"	3.48"	6.92"	1.29"x 3.45"x .13"	7.0
PI-1910	PDF DXF	PI-1910-LG	PDF DXF	2.36"	3.94"	7.48"	2.20"	3.48"	6.92"	2.06"x 3.45"x .13"	9.5
PI-1911	PDF DXF	PI-1911-LG	PDF DXF	3.15"	3.94"	7.48"	2.99"	3.48"	6.92"	2.86"x 3.45"x .13"	10.5

[DXF](#) Autocad DXF Specifications File
(Requires CAD software such as AutoCAD)

[PDF](#) Adobe PDF Specifications File



[Download PDF Viewer](#)

[Home](#) | [Company Info](#) | [Online Catalog](#) | [Check Stock](#) | [Distributor/Price](#)

[Reps](#) | [New](#) | [Search](#) | [Contact](#) | [Privacy Policy](#)

BUD INDUSTRIES INC.

P.O. Box 998

Willoughby, Ohio 44094

Phone: 440-946-3200 Fax: 440-951-4015

E-Mail: saleseast@budind.com

PART NAME

PI SERIES - ABS MOLDED ENCLOSURE

PART No.

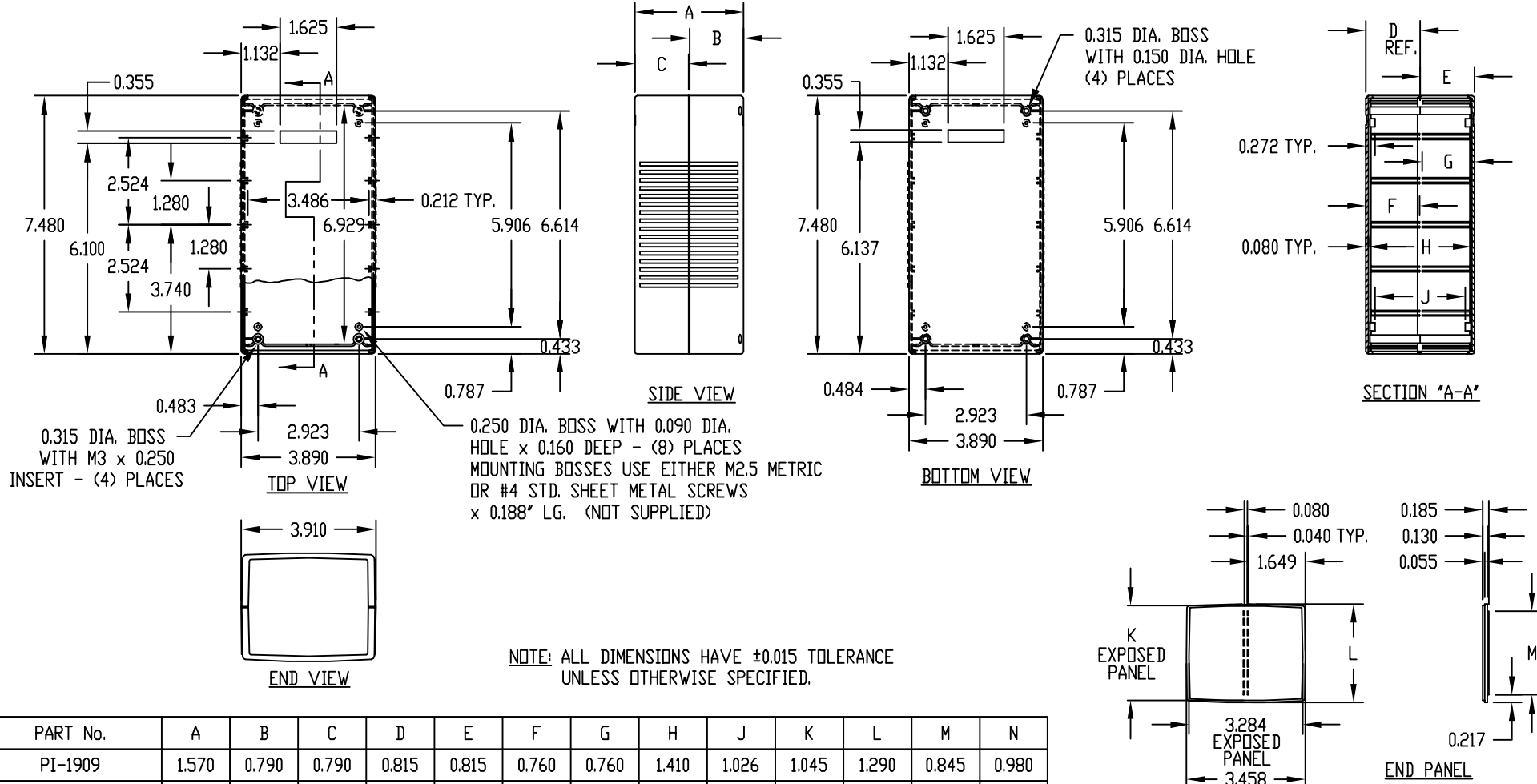
PI-1909 THRU PI-1911
PI-1909-LG THRU PI-1911-LG

MATERIAL & FINISH:

(NO SUFFIX) DARK GRAY HIGH-IMPACT ABS (UL94-V0) - TOP & BOTTOM
LIGHT GRAY HIGH-IMPACT ABS (UL94-V0) - END PANELS
(SUFFIX -LG) LIGHT GRAY HIGH-IMPACT ABS - TOP & BOTTOM
DARK GRAY HIGH-IMPACT ABS - END PANELS

FOUR (4) RUBBER SELF-ADHESIVE FEET SUPPLIED.

FOUR (4) M3 x (N*) LG. SCREWS SUPPLIED FOR ASSEMBLY.



PART No.	A	B	C	D	E	F	G	H	J	K	L	M	N
PI-1909	1.570	0.790	0.790	0.815	0.815	0.760	0.760	1.410	1.026	1.045	1.290	0.845	0.980
PI-1910	2.360	0.790	1.560	1.575	0.815	0.913	0.760	2.200	1.816	1.825	2.065	1.615	0.980
PI-1911	3.150	1.560	1.560	1.575	1.575	0.913	0.913	2.990	2.606	2.610	2.860	2.405	1.765