

Accessories - Power Outlet Strips

Power Outlet Strip

Design Features

Power outlet strips can be used in cabinets, on walls or along work or test benches. Silver gray housings; no loose wires can come into contact with conductor wires. Strips snap into adjustable mounting clips. Grounding type 15 amp., 125 volt receptacles, 15 amp thermal-type circuit breaker with reset. 14 gauge, 3 wire, 6 foot power cord. All components U. L. approved.



| Power Outlet Strips | | | | |
|---------------------|--|----------------|--------|------------|
| Catalog Number | | No. of Outlets | Length | Weight Lbs |
| POS-4 | | 4 | 17.50" | 2.00 |
| POS-6 | | 6 | 12.25" | 1.75 |
| POS-7 | | 7 | 48.00" | 3.50 |
| POS-9 | | 9 | 60.00" | 4.25 |
| POS-11 | | 11 | 72.00" | 4.75 |

PART
NAME

POWER OUTLET STRIP

PART
No.

POS-4-S TO POS-66

14 GAUGE 3 WIRE POWER CORD
6 FOOT LONGMOLDED ON 3-PRONG PLUG
15 AMP 125 VOLTGROUNDING TYPE 15 AMP 125 VOLT
RECEPTACLE

STRAIN RELIEF

1.062

1.062

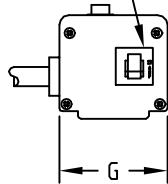
H

SURGE PROTECTION
INDICATOR LAMP
15 AMP 125 VOLT

D TYP.

C

B

ILLUMINATED
ON/OFF SWITCH
15 AMP 125 VOLTCIRCUIT BREAKER THERMAL TYPE
15 AMP 125 VOLT
WITH RESET

G

E

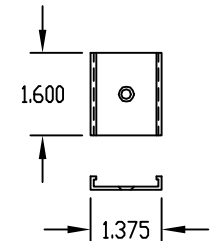
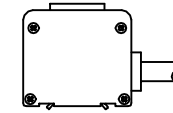
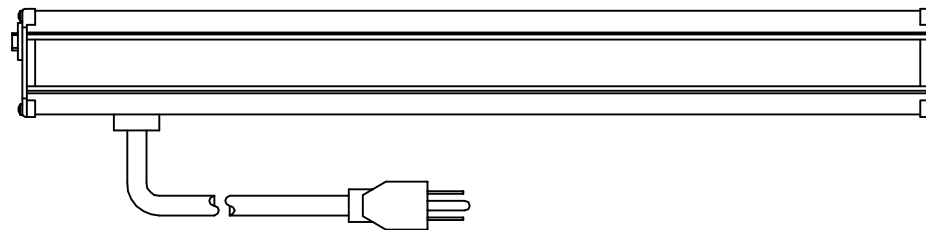
0.188

HOUSING

0.125

A

F

MATERIAL:HOUSING (TOP & BOTTOM CHANNELS) &
MTG. CLIPS - ALUMINUM EXTRUSIONS
END CAPS - ABS PLASTIC**FINISH:**HOUSING - GREY
- PUTTY WHITE (POS-66 ONLY)
RECEPTACLES, POWER CORD & END
CAPS - BLACK
- PUTTY WHITE (POS-66 ONLY)
MTG. CLIPS - NATURAL

MOUNTING CLIP DETAIL

| PART NO. | QTY. OF OUTLETS | SURGE SUPPRESSED | A | B | C | D | E | F | G | H | QTY. OF MTG. CLIPS |
|----------|--------------------|---------------------|--------|-------|------------------------------|-------|-------|-------|-------|-------|-----------------------|
| POS-4-S | (4) | YES | 17.625 | 0.938 | (3) SPACES @ 3.062 = 9.188 | 3.062 | 2.000 | 1.750 | 2.093 | 2.000 | (2) |
| POS-6 | (6) | NO | 12.250 | 0.969 | (5) SPACES @ 1.250 = 6.250 | 1.250 | 1.828 | 1.563 | 1.843 | 1.750 | (2) |
| POS-7-S | (7) | YES | 48.125 | 4.625 | (6) SPACES @ 6.000 = 36.000 | 6.000 | 2.000 | 1.750 | 2.093 | 2.000 | (2) |
| POS-9-S | (9) | YES | 60.125 | 4.625 | (8) SPACES @ 6.000 = 48.000 | 6.000 | 2.000 | 1.750 | 2.093 | 2.000 | (3) |
| POS-11-S | (11) | YES | 72.125 | 4.625 | (10) SPACES @ 6.000 = 60.000 | 6.000 | 2.000 | 1.750 | 2.093 | 2.000 | (3) |
| POS-66 | (6) | YES | 13.000 | 0.969 | (5) SPACES @ 1.250 = 6.250 | 1.250 | 2.000 | 1.750 | 2.093 | 2.000 | (2) |