

PART NAME

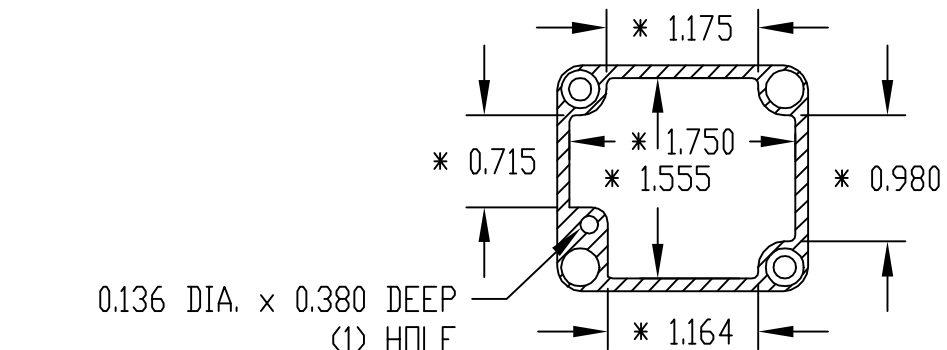
NEMA 4X ENCLOSURE

PART No.

AN-1311, AN-1311-G, AN-2811 & AN-2811-B

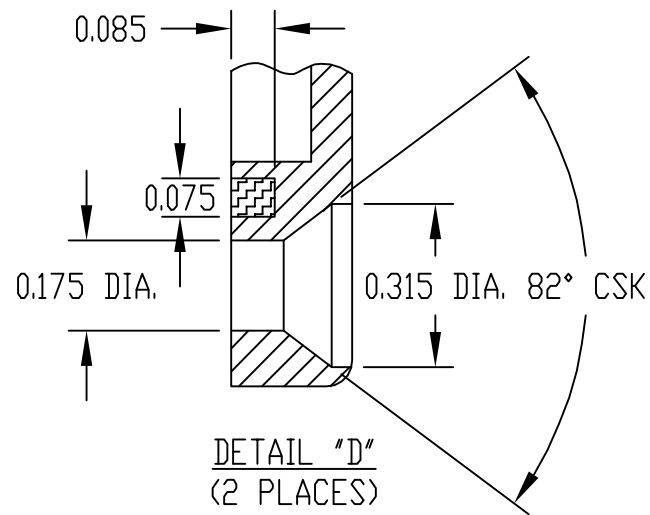
REV. DATE

2-12-04



SECTION "B-B"
* DIMENSIONS ARE AT BOTTOM OF ENCLOSURE

0.136 DIA. x 0.380 DEEP (1) HOLE ACCEPTS EITHER M3.5 METRIC OR #6 STD. SHEET METAL SCREWS x 0.250 LG. (NOT SUPPLIED)



DETAIL "D"
(2 PLACES)

MATERIAL: ALUMINUM ALLOY #ADC-10

FINISH: NATURAL (NO SUFFIX)

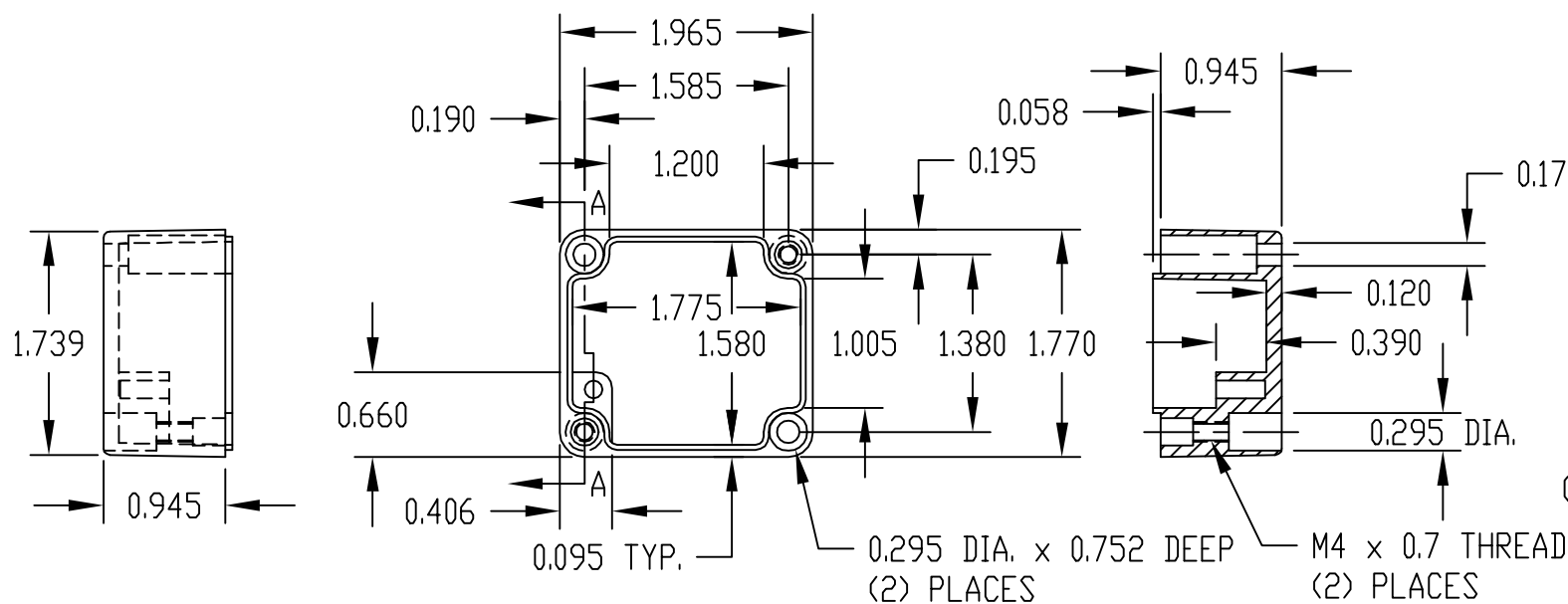
GRAY (SUFFIX -G)

SMOOTH BLACK (SUFFIX -B)

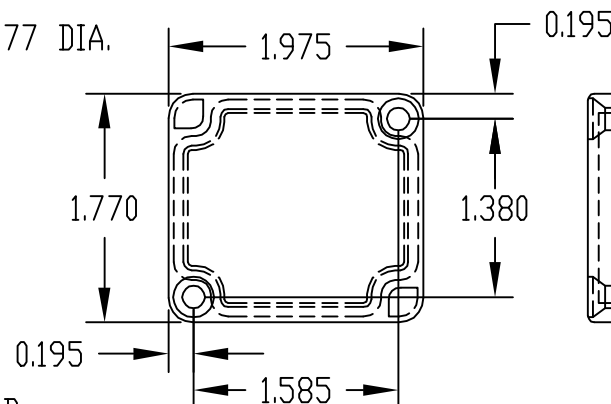
TWO (2) M4 x 20mm (0.787") LG. SCREWS SUPPLIED FOR ASSEMBLY.

ONE (1) M3.5 x 6mm LG. NICKEL PLATED SCREWS AND WASHERS SUPPLIED FOR GROUNDING

ALL DIMENSIONS HAVE ±0.015 TOLERANCE UNLESS OTHERWISE SPECIFIED



SECTION "A-A"

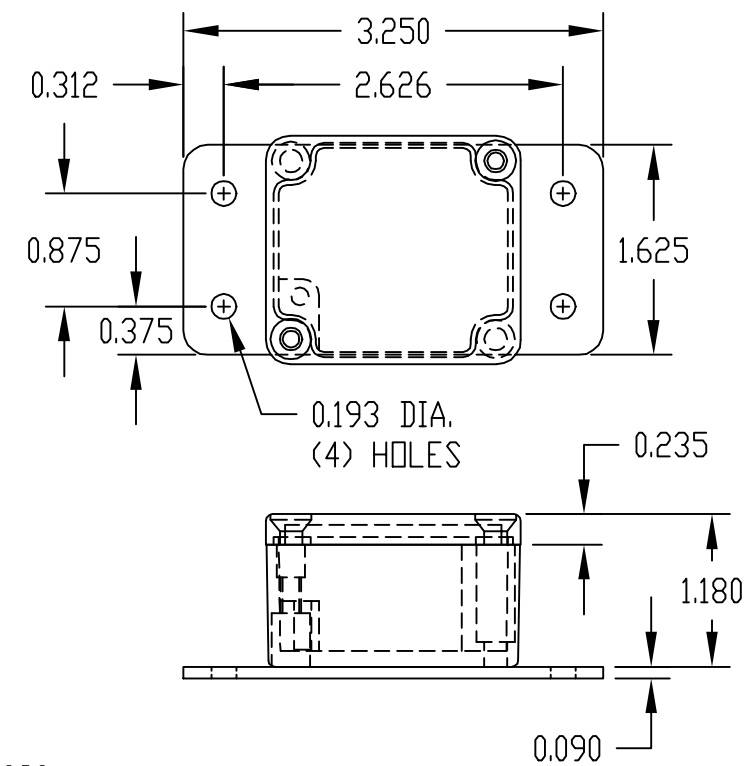


0.150 TYP.

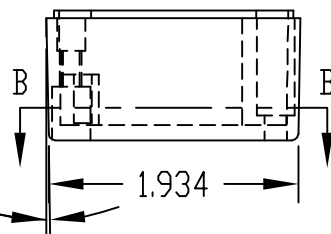
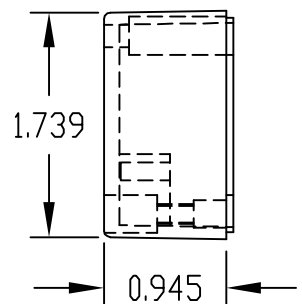
EPDM GASKET (WHITE)

COVER

SECTION "C-C"



PART NO. AN-2811 & AN-2811-B ARE SUPPLIED WITH A WELDED ON MOUNTING BRACKET ONLY.



BODY