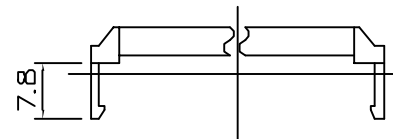
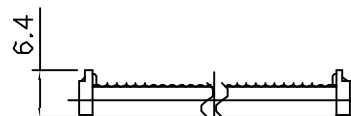
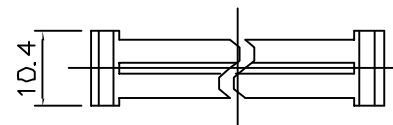
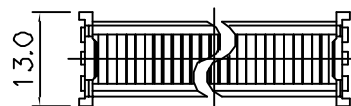
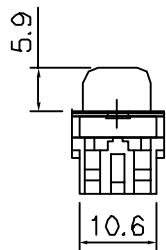
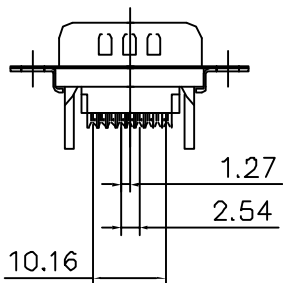
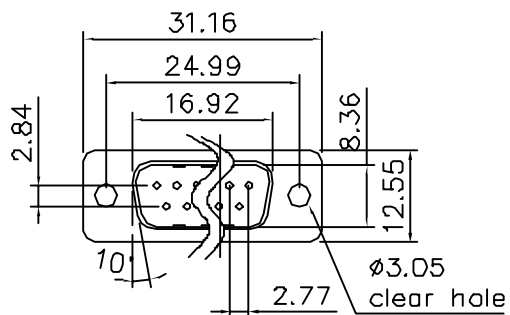


This document is the property of Amphenol Corporation and is delivered on the express condition that it is not to be disclosed, reproduced or used, in whole or in part, for the manufacture or sale by anyone other than Amphenol Corporation without its prior consent, and that no right is granted to disclose or to use any information in this document.

MALE

Specifications :

Contact resistance : 30m max. at DC 100mA.  
 Insulator resistance : 1000M min. at DC 500V.  
 Current rating : 5 AMP.  
 Dielectric withstanding voltage : AC 500V. for 1 minute  
 Operating temperature : -55 to +125 degrees Celsius  
 Contact : Brass , selective gold  
 Housing : PBT & 30% glass fiber (UL 94-V0)  
 Single Contact insertion force : 500g max  
 Single contact withdrawal force : 30g min



STRAIN RELIEF



| Drawing number  | Contact plating |
|-----------------|-----------------|
| L17DEFRA09P     | Gold flash      |
| L117DEFRA09P    | 15µ inches      |
| L17DEFRA09PC309 | 30µ inches      |

| TOLERANCE (mm)             | APPROVALS          | DATE        | TITLE   | AMPHENOL<br>AMPHENOL SOCAPEX<br>Dale Plant |              |
|----------------------------|--------------------|-------------|---|--|--------------|
| X. ±0.5                    | DRAWN<br>C.R.      | 14/11/01    | 17 SERIES<br>FLAT RIBBON<br>D-SUB PLUG CONNECTORS | Scale N.A.                                 | Sheet 1 of 1 |
| X.X ±0.3                   | CHECKED<br>J.F.L.  | 14/11/01    |   |  |              |
| XXX ±0.2                   | APPROVED<br>J.F.L. | 14/11/01    |   |  |              |
| UNLESS OTHERWISE SPECIFIED | UNIT:<br>MM        | SIZE:<br>A4 | DRAWING:<br>L-17DEFRA09P---                       | REV:<br>A                                  |              |