

A-1JB		REVIS IONS	
DRAWING NO.	DESCRIPTION	DATE	ECO
THIRD ANGLE PROJ.	RELEASE TO MFG.	5/7/04	44924
			HP

REV	DESCRIPTION	DATE	ECO	APPR
A		5/7/04	44924	HP
E	ADDED ONE MORE VISUAL ORIENTATION FEATURE; UPDATED LOCATION OF VISUAL ORIENTATION FEATURES. 1.25 WAS 1.262 ±0.207-0.05; 2.2 REF. WAS 2.1 REF.; 0.35±0.05 WAS 0.3; 1.50 WAS 1.6	2/9/10	47963	JYL
F	ADD INFORMATION BLOCK ABOVE COD SYMBOL	6/28/10	48122	CPM

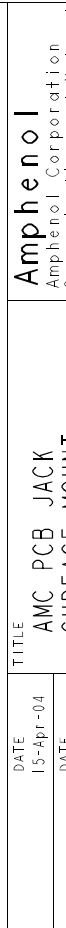
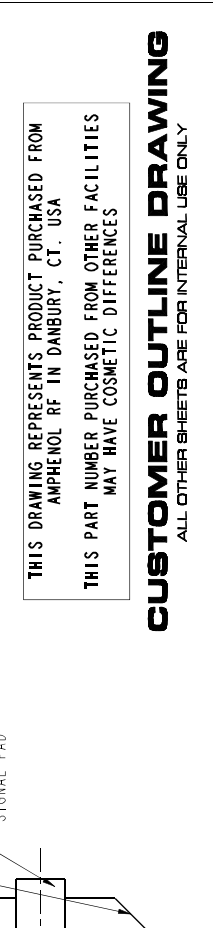
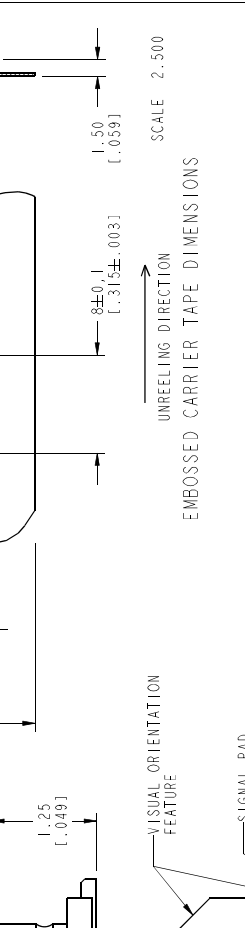
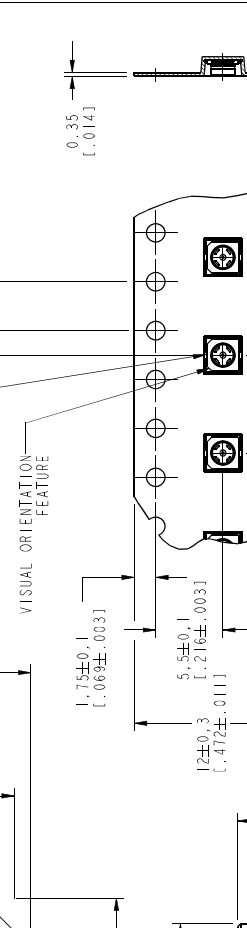
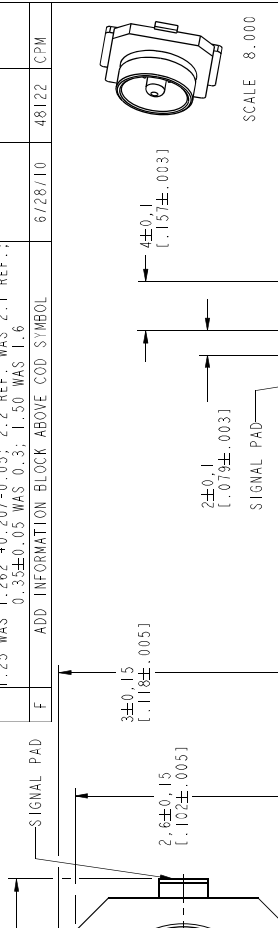
NOTES:

- ELECTRICAL:
 - A: IMPEDANCE: 50Ω, NOMINAL
 - B: FREQUENCY RANGE: 0-6GHz (VSWR 1.3 MAX.)
 - C: OPERATING VOLTAGE: 500 VRMS
 - D: CONTACT RESISTANCE: CENTER CONTACT= 20 mΩ MAX. OUTER CONTACT= 10mΩ MAX.
 - E: DIELECTRIC WITHSTANDING VOLTAGE: 300VAC FOR 1 MINUTE, CURRENT LEAKAGE 2mA MAX.
 - F: INSULATION RESISTANCE: 500 MEGOHMS MIN.

- PHYSICAL:
 - A: TEMPERATURE RANGE: -40°C TO +90°C
 - B: AMC INTERFACE IS FULLY COMPATIBLE WITH "U.F.L" SERIES PRODUCT.
 - C: SUITABLE FOR SOLDER REFLOW PROCESS.

- MATERIALS AND FINISHES:
 - HOUSING: LCP (UL94V-0)
 - CENTER CONTACT: BRASS, GOLD PLATE
 - GROUND CONTACT: PHOSPHOR BRONZE, SILVER PLATE

- PACKAGING:
 - TAPE AND REEL PACKAGING.
 - QTY : 2500 PCS.



SCALE 8.000

SCALE 2.500

UNREEL DIRECTION

EMBOSSED CARRIER TAPE DIMENSIONS

THIS DRAWING REPRESENTS PRODUCT PURCHASED FROM AMPHENOL RF IN DANBURY, CT, USA

THIS PART NUMBER PURCHASED FROM OTHER FACILITIES MAY HAVE COSMETIC DIFFERENCES

CUSTOMER OUTLINE DRAWING
ALL OTHER SHEETS ARE FOR INTERNAL USE ONLY

DRAWN	G. ANTONINI	DATE	15-Apr-04	TITLE	AMC PCB JACK SURFACE MOUNT TAPE & REEL
ENGINEER	G. ANTONINI	DATE	15-Apr-04		
APPROVED	O. BARTHELMES	DATE	5/7/04		
CAD FILE	1:VAMCA-1JB	CODE ID	74868	DWG SIZE	B
		DRAWING NO.	A-1JB	SHEET	1 OF 1

Amphenol
Amphenol Corporation
Communication and Network
Products Division
Danbury, CT U.S.A. 06810

DRAWN	G. ANTONINI	DATE	15-Apr-04	TITLE	AMC PCB JACK SURFACE MOUNT TAPE & REEL
ENGINEER	G. ANTONINI	DATE	15-Apr-04		
APPROVED	O. BARTHELMES	DATE	5/7/04		
CAD FILE	1:VAMCA-1JB	CODE ID	74868	DWG SIZE	B
		DRAWING NO.	A-1JB	SHEET	1 OF 1

UNLESS OTHERWISE SPECIFIED, DIMENSIONS ARE IN MM (INCHES) AND TOLERANCES ARE:

0.5 - 6mm	±0.2mm
6 - 30mm	±0.4mm
30 - 120mm	±0.6mm

NOTICE - These drawings, specifications, or other data (1) are, and remain the property of Amphenol Corp. (2) must be returned upon request; and (3) are confidential and not to be disclosed to any person other than those to whom they are given by Amphenol Corp. The furnishing of these drawings, specifications, or other data by Amphenol Corp., or to any other person for any purpose is not to be regarded as an implication or otherwise in any manner licensing, granting rights, or permitting such holder to manufacture, use, or sell any product or process which incorporates, or is based on, the data. That data may be related to or disclosed by, said drawings, specifications, or other data.

RECOMMENDED PCB PATTERN

