

CHASSIS MOUNT



Primary Power Components Division

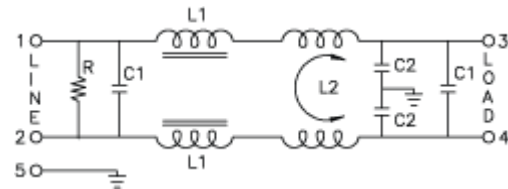
[EMI Filter Cross Reference](#)

[EMI Filter Inquiry Form](#)

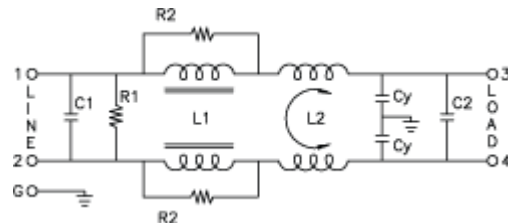
**RoHS
Compliant**

848 Series Multi-Purpose Filters

A compact filter providing noise suppression in industrial environments



3 - 6 - 10 AMP



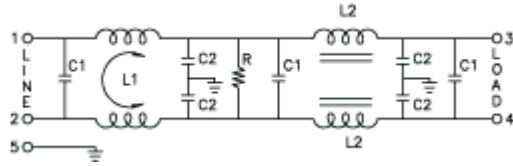
20 AMP

Part Number		Similar to Corcom	Amp Rating	Size L x W x H
848-03/001		10EC1	3	3.25 x 1.90 x 1.15
848-06/002		10ED1	6	3.25 x 1.90 x 1.15
848-10/003		10EEA1	10	3.75 x 2.06 x 1.54

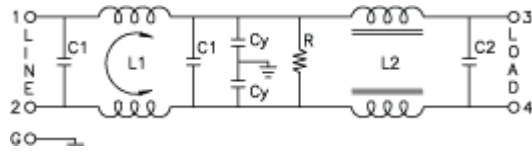
848-20/004		10EEB1	20	5.25 x 4.14 x 1.54
------------	--	--------	----	--------------------

849 Series Multi-Purpose Filters

A compact filter providing noise suppression in industrial environments



3 - 6 - 10 AMP

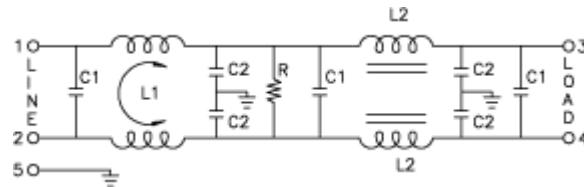


20 AMP

Part Number		Similar to Corcom	Amp Rating	Size L x W x H
849-03/001		3MV1 / 3VV1	3	3.25 x 1.90 x 1.15
849-06/002		6MV1 / 6VV1	6	3.25 x 1.90 x 1.15
849-10/003		10MV1 / 10VV1	10	3.25 x 1.90 x 1.54
849-20/004		20MV1 / 20VV1	20	5.25 x 4.14 x 1.54

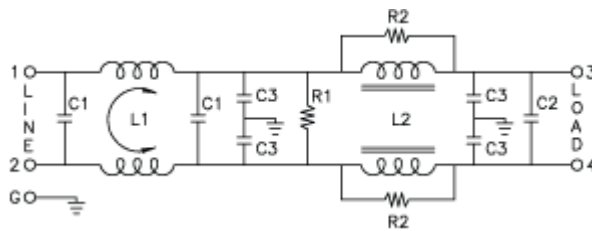
850 Series Multi-Purpose Filters

A compact filter providing noise suppression in industrial environments



3 - 6 - 10 AMP



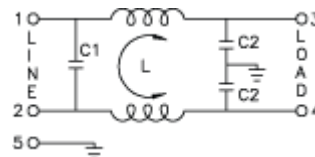


20 AMP

Part Number		Similar to Corcom	Amp Rating	Size L x W x H
850-03/001		3VW11	3	3.25 x 1.90 x 1.15
850-06/002		6VW1	6	3.25 x 1.90 x 1.15
850-10/003		10VW1	10	3.25 x 1.90 x 1.15
850-20/004		20VW1	20	5.25 x 4.14 x 1.54

851 Series General Purpose Filters

A compact filter providing EMI suppression for electronic equipment



3 - 5 - 10 - 20 AMP

Part Number		Similar to Corcom	Amp Rating	Size L x W x H
851-03/003		3VB1/3EB1/3B1	3	2.54 x 2.15 x 0.65
851-03/004*		3VB3/3EB3	3	2.52 x 1.33 x 0.79
851-05/005		5VB1/5EB1/5B1	5	2.54 x 2.15 x 0.65
851-05/006*		5VB3/5EB3	5	2.52 x 1.33 x 0.79
851-10/007		10B1/10EB1/10VB1	10	2.54 x 2.15 x 0.65
851-10/009**		10VB6	10	3.10 x 2.77 x 1.18
851-20/011**		20VB6	20	3.37 x 2.77 x 1.18

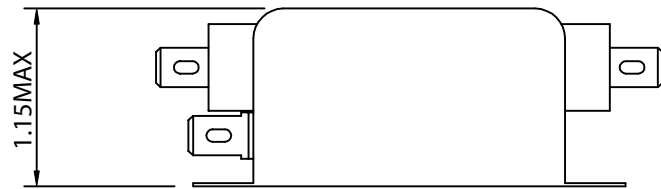
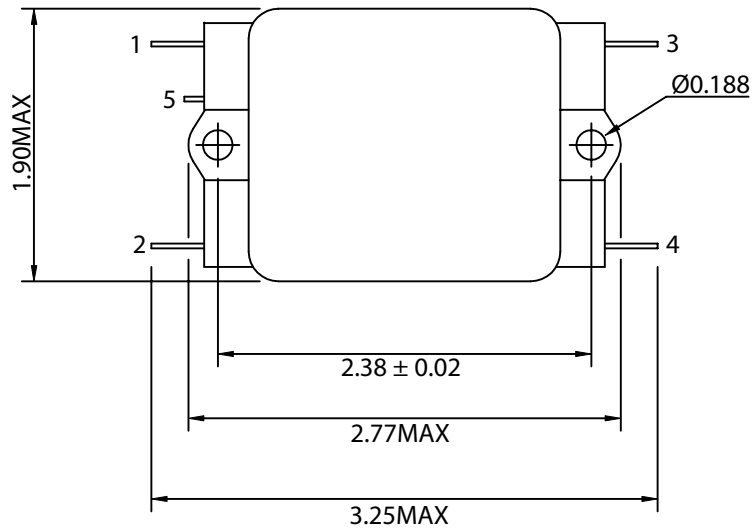
* Leads without Quick Connects

** Stud Terminals without Quick Connects

THESE DRAWINGS ARE THE PROPERTY OF QUALTEK ELECTRONICS AND NOT TO BE REPRODUCED FOR OR COMMUNICATED TO A THIRD PARTY WITHOUT THE EXPRESS WRITTEN PERMISSION OF AN OFFICER OF QUALTEK ELECTRONICS.

REVISION			
REV.	DESCRIPTION		APPROVED
B	RoHS Compliance		DP

PHYSICAL DIMENSIONS:



ELECTRICAL CHARACTERISTICS:

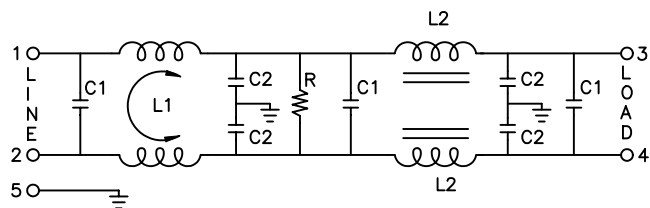
- 1-1. VOLTAGE RATING.....115/250VAC
- 1-2. CURRENT RATING
A. @ 115 VAC.....3 A RMS MAX
B. @ 250 VAC.....3 A RMS MAX
- 1-3. OPERATING FREQUENCY.....50/60Hz
- 1-4. LEAKAGE CURRENT: EACH LINE TO GROUND
A. @ 115 VAC 60Hz.....0.50 mA MAX
B. @ 250 VAC 50Hz.....1.00 mA MAX
- 1-5. HIPOT RATING (FOR ONE MINUTE)
A. LINE TO GROUND.....2250 VDC
B. LINE TO LINE.....1450 VDC
- 1-6. MINIMUM INSERTION LOSS IN dB: (AT 50 OHM SYSTEM)

FREQ. MHz	.01	.05	.10	.15	.50	1.0	5.0	10	30
COM. MODE dB	1	6	10	12	20	30	60	60	45
DIF. MODE dB	0	1	15	25	50	60	45	50	50

- 1-7. OPERATING TEMPERATURE.....-25° TO +85° C
- 1-8. SAFETY:
- 1-9. RoHS COMPLIANT

CONTROLLED

SCHEMATIC:



- L1: 1.00mH
- L2: 30.0uH
- C1: 0.22uF
- C2: 3300pF
- R: 330KΩ

Dim range (mm)	Tolerance +/- (mm)	Qualtek Electronics Corp. PPC DIVISION	
		Part Number: 850-03/001	
0-1	0.15	Description: EMI FILTER	
1-6	0.20		
6-18	0.30	UNIT: in	
18-50	0.50		
50-120	0.70	Drawn / Date	
120-250	0.90	B.ZHANG	
250-500	1.20		