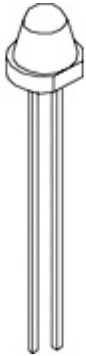




We Tame Photons to Work for You!



Products > LEDs > Thru-Hole > Round > 5mm > Electrical Features > Bi-Color



### Features / Options

- ▶ State-of-the-Art, High Brightness Chip Technology
- ▶ Choice of Colors and Lens Finishes
- ▶ Lead Frame / Lens Casting Reliability
- ▶ Easy-to-Solder Leads, Tin Finish
- ▶ Available Bulk or on Tape and Reel
- ▶ Lead Trimming and Forming Available
- ▶ Custom Shapes, Easily Tooled, Low Minimum

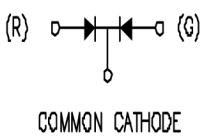
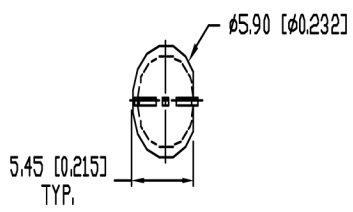
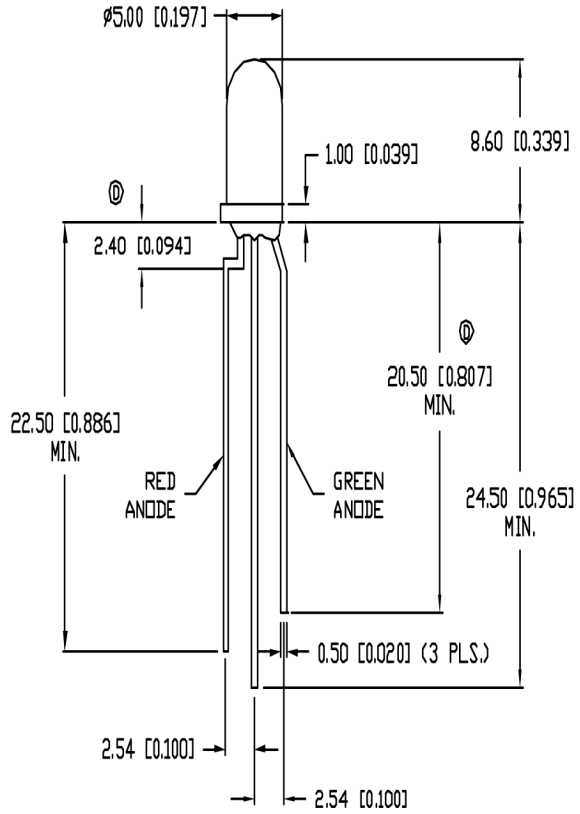
### Applications / Uses

- ▶ Board or Panel Indication or Illumination
- ▶ Annunciator and Control Panels
- ▶ Telecom Switches and Central Station Equipment
- ▶ Large Panel Indicators

Part Number:	Brightness	Dice Material	Emitted Color	Peak Wavelength	Epoxy Lens	Operating Typ Vf (V)	Intensity Typ, mcd @ 20 mA	View Angle 2x Theta		
SSL-LX433HGW	STANDARD	GaP	Red/Green	700	White Diffused	2	4	120		—
SSL-LX50493HGW	STANDARD	GaP	Red/Green	700	White Diffused	2.1	8	60		—
SSL-LX5063HGW	STANDARD	GaP	Red/Green	700	White Diffused	2	3	60		—
SSL-LX5093HGW-125	STANDARD	GaP	Red/Green	700	White Diffused	2	5	60		—
SSL-LX5093IGW	STANDARD	GaAsP	Red/Green	635	White Diffused	2.1	30	60		—
SSL-LX5099GIW	STANDARD	GaP/GaAsp	Green/Red	565	White Diffused	2.2/2.0	45	60		—
SSL-LX5099GYW	STANDARD	GaP/GaAsp	Green/Yellow	565	White Diffused	2.2/2.1	45	60		—
SSL-LX5099HGW	STANDARD	GaP	Red/Green	700	White Diffused	2.0/2.2	6	50		—
SSL-LX5099HYW	STANDARD	GaP	Red/Yellow	700	White Diffused	2.1	10	60		—
SSL-LX5099IGW	STANDARD	GaAsP/GaP	Red/Green	635	White Diffused	2.0/2.2	10	60		—

DATE	REVISIONS	REV
8-31-94	UPDATED SAFE OPER. SPECS.	A
2-1-95	UPDATED SPECS.	B
4-5-95	UPDATED SPECS.	C
9-7-95	CORRECTED DIMS WHERE NOTED.	D
3-18-98	E.C.N. #10BRDR. & REDRAWN./	E

DRAWING NUMBER SSL-LX5099IGW	REV E
---------------------------------	----------



UNLESS OTHERWISE SPECIFIED TOLERANCE IS  $\pm 0.25\text{mm}$  ( $\pm 0.010$ "

ELECTRO-OPTICAL CHARACTERISTICS  $T_A = 25^\circ\text{C}$   $I_f = 20\text{mA}$

PARAMETER	MIN	TYP	MAX	UNITS	TEST COND
PEAK WAVELENGTH		635 (RED)		nm	
		565 (GREEN)		nm	
FORWARD VOLTAGE (R/G)		2.0/2.2	2.5/2.6	$V_f$	
REVERSE VOLTAGE	5.0			$V_r$	$I_f = 100\mu\text{A}$
AXIAL INTENSITY (R/G)		55/45		mcd	$I_f = 20\text{mA}$
VIEWING ANGLE		60		$2x$ theta	
EMITTED COLOR:	RED/GREEN				
EPOXY LENS FINISH:	MILKY WHITE DIFFUSED				

Ⓢ LIMITS OF SAFE OPERATION AT  $25^\circ\text{C}$

PARAMETER	COLORS	MAX	UNITS
PEAK FORWARD CURRENT*		150	mA
STEADY CURRENT	(R/G)	30/25	mA
POWER DISSIPATION		105	mW
DERATE FROM $25^\circ\text{C}$		-1.2	$\text{mW}/^\circ\text{C}$
OPERATING, STORAGE TEMP.		-40 TO +85	$^\circ\text{C}$
SOLDERING TEMP.		+260	$^\circ\text{C}$
2.0mm FROM BODY			3 SEC. MAX

\*  $t < 10\mu\text{s}$

**RELIABILITY NOTE**  
OUR MANY YEARS OF EXPERIENCE DATA ACCUMULATION INDICATE THAT SOLDER HEAT IS A MAJOR CAUSE OF EARLY AND FUTURE FAILURE. PLEASE PAY ATTENTION TO YOUR SOLDERING PROCESS.



CONFIDENTIAL INFORMATION  
THE INFORMATION CONTAINED IN THIS DOCUMENT IS THE PROPERTY OF LUMEX INCORPORATED. EXCEPT AS SPECIFICALLY AUTHORIZED IN WRITING BY LUMEX INCORPORATED, THE HOLDER OF THIS DOCUMENT SHALL KEEP ALL INFORMATION CONTAINED HEREIN CONFIDENTIAL AND SHALL PROTECT SAME IN WHOLE OR IN PART FROM DISCLOSURE AND DISSEMINATION TO ALL THIRD PARTIES.

DATE: 7-2-92	DWN:	CHK'D:	APPD:
SCALE: N/A			

T-5mm (T-1 3/4) LED, RED/GREEN BICOLOR, MILKY WHITE DIFFUSED LENS, COMMON CATHODE.

PAGE 1 OF 1	DRAWING NUMBER SSL-LX5099IGW	REV E
-------------	---------------------------------	----------