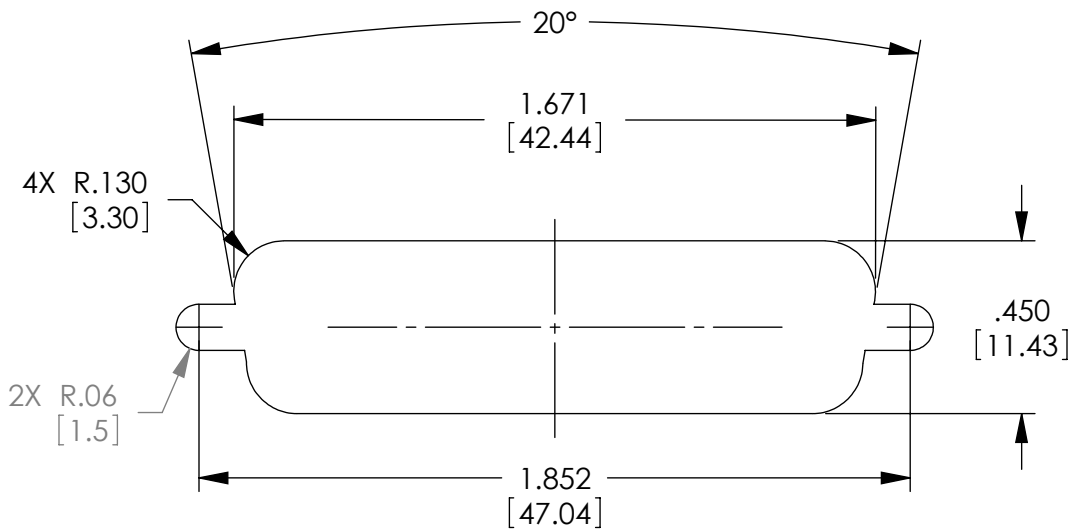


THE INFORMATION CONTAINED IN THIS DRAWING IS THE SOLE PROPERTY OF L-COM, INC. ANY REPRODUCTIONS IN PART OR WHOLE WITHOUT THE WRITTEN PERMISSION OF L-COM, INC. IS PROHIBITED.

REVISIONS			
REV	DESCRIPTION	DATE	CHANGED BY
F	ECN 99999: UPDATED DRAWING AND NEW FORMAT	1/22/10	D.FRISIELLO



RECOMMENDED PANEL OPENING  
(MAX PANEL THICKNESS: 0.06")

NOTES:

MATERIAL:  
SHELL: STEEL  
CONTACTS: COPPER ALLOY  
HARDWARE: BRASS  
INSULATOR: PBT FIBER REINFORCED (UL94V-0 RATED)

FINISH:  
SHELL: TIN/NICKEL PLATED  
CONTACTS: GOLD FLASH PLATED, 1-5μ INCHES  
HARDWARE: NICKEL PLATED

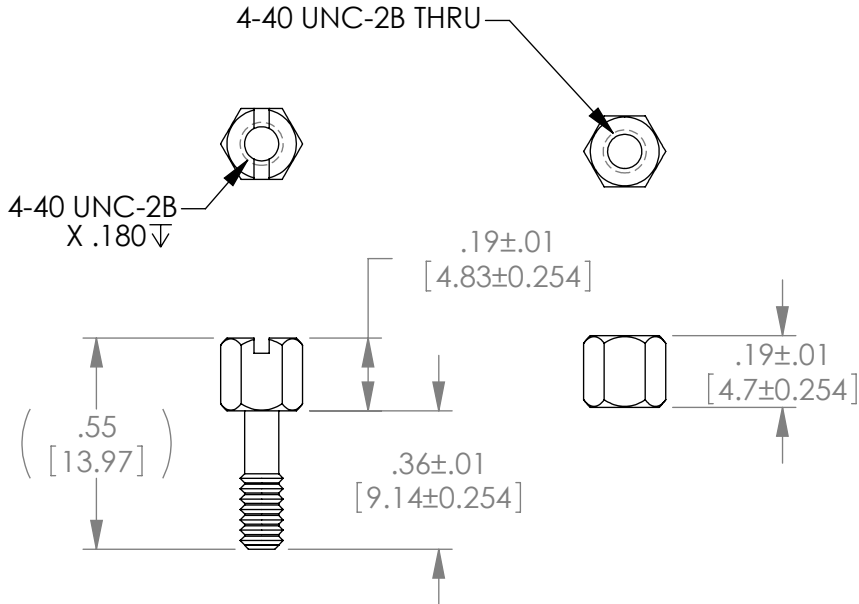
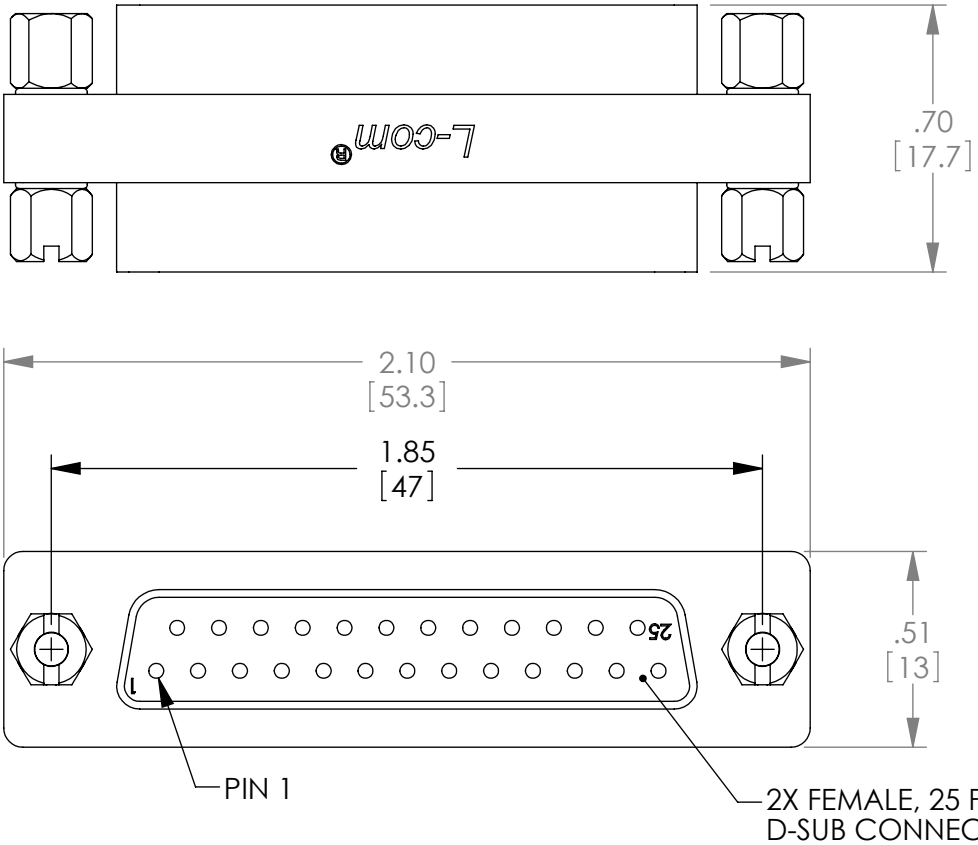
ELECTRICAL:  
CURRENT RATING: 3 AMP  
INSULATION RESISTANCE: 1000 MΩ MIN @500 VDC  
DIELECTRIC WITHSTANDING VOLTAGE: 1000 VAC (FOR ONE MINUTE)

MISCELLANEOUS:  
OPERATING TEMPERATURE RANGE: -55°C TO +105°C.  
ALL CONTACTS WIRED STRAIGHT THROUGH.  
COMPONENT SHALL BE TESTED FOR CONTINUITY.

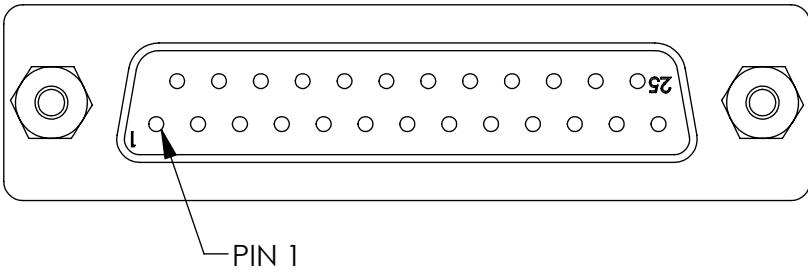
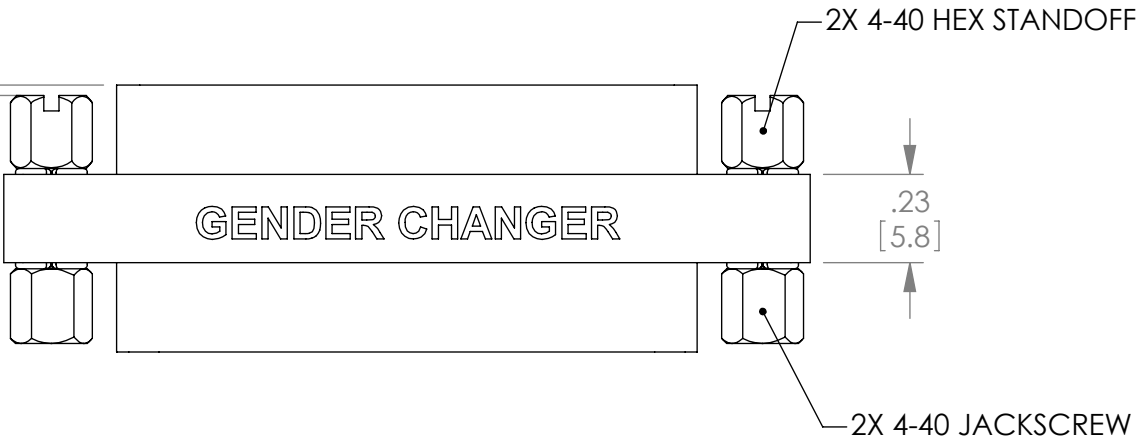
LABELING:  
PANTONE 2945 BLUE. "L-COM" FONT MyriaMM ITALIC.  
"GENDER CHANGER" FONT ARIAL BOLD, TEXT HEIGHTS; .085"  
TEXT COLOR; WHITE.

PACKAGING:  
COMPONENT SHALL BE INDIVIDUALLY PACKAGED IN  
ACCORDANCE WITH L-COM SPECIFICATION PS-0031.

4X .03<sup>+0.00</sup><sub>-.03</sub>  
0  
[0.76 -0.762]



JACKSCREW & HEX STANDOFF  
SPECIFICATION



RoHS Compliant ✓

UNLESS OTHERWISE SPECIFIED, DIMENSIONS ARE IN INCHES [mm]  DIMENSIONAL TOLERANCES: .X = ±.1 .XX = ±.01 .XXX = ±.005  ANGULAR TOLERANCES: ALL = ± 1°  PROJECTION 	APPROVALS	DATE	 45 BEECHWOOD DRIVE NORTH ANDOVER, MA 01845	
	DRAWN BY R.CARRICK	09/28/2000		
	CHECKED BY T.CLARK	09/28/2000	CATEGORY D-SUBMINIATURE	
	APPROVED BY D.PARHAM	09/28/2000	PRODUCT DESCRIPTION ADPT GNDR CHGR DB25 F/F SLIM	
COLOR VARIATIONS MAY OCCUR	SIZE <b>B</b>	FSCM NO. <b>43321</b>	DWG. NO. <b>DGB25F</b>	REV. <b>F</b>
	SCALE: 2:1		CAD FILE: DGB25F.SLDDRW	SHEET 1 OF 1