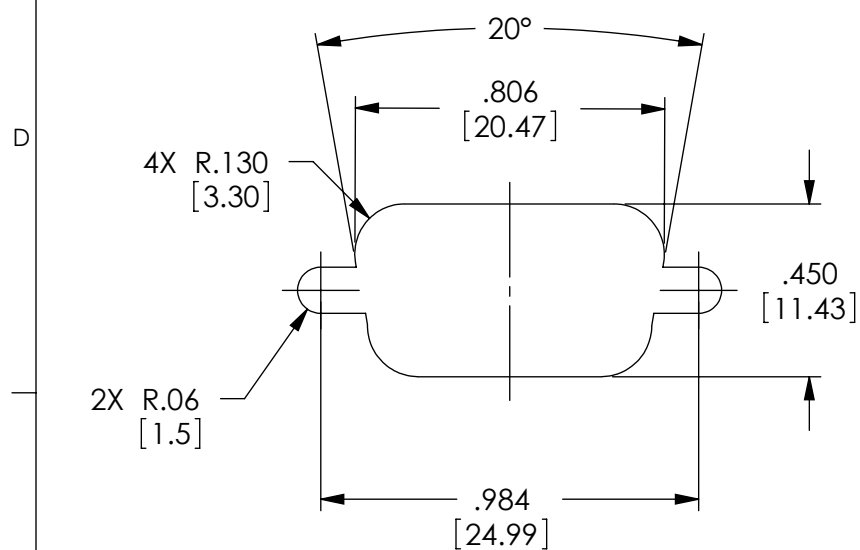
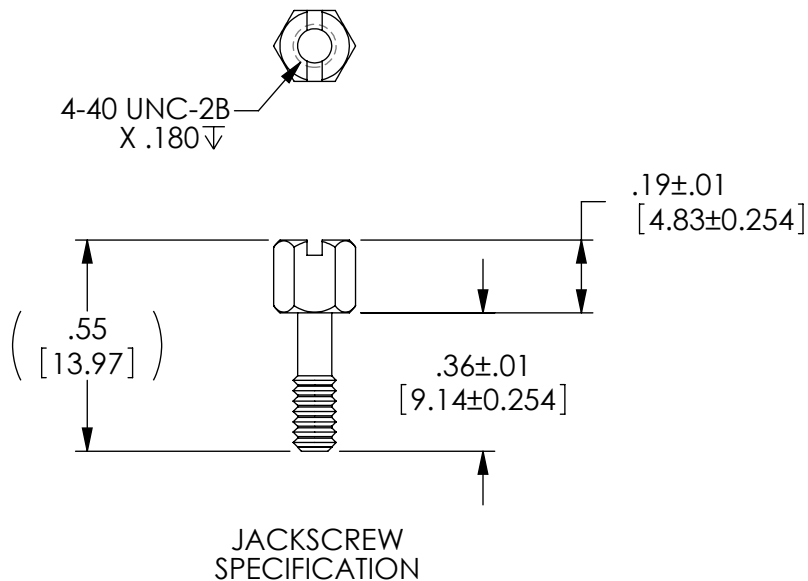
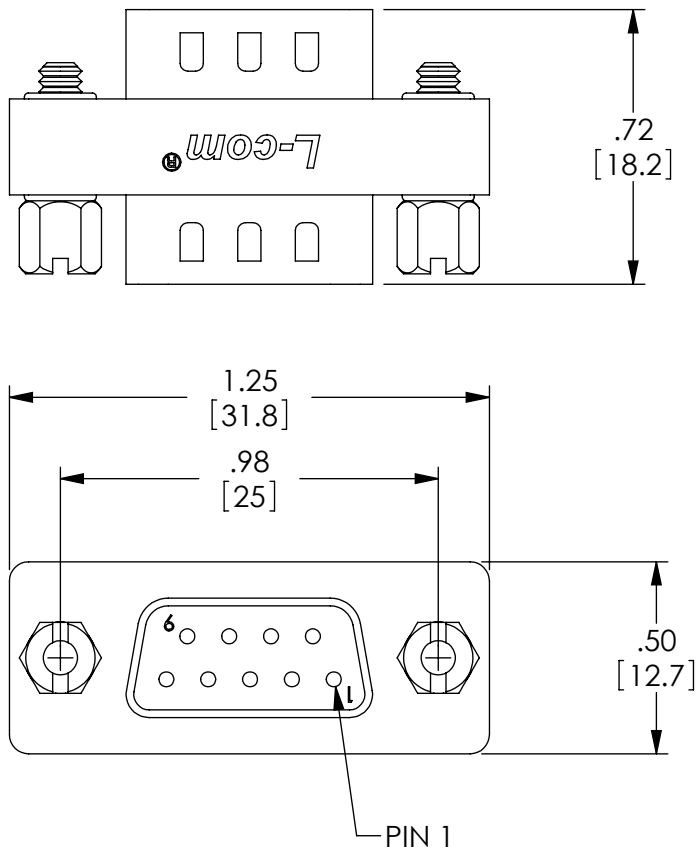


THE INFORMATION CONTAINED IN THIS DRAWING IS THE SOLE PROPERTY OF L-COM, INC. ANY REPRODUCTIONS IN PART OR WHOLE WITHOUT THE WRITTEN PERMISSION OF L-COM, INC. IS PROHIBITED.

REVISIONS			
REV	DESCRIPTION	DATE	CHANGED BY
G	ECN 99999: UPDATED DRAWING AND NEW FORMAT	1/20/10	D.FRISIELLO



RECOMMENDED PANEL OPENING
(MAX PANEL THICKNESS: 0.06")



NOTES:

MATERIAL:
SHELL: STEEL
CONTACTS: COPPER ALLOY
HARDWARE: BRASS
INSULATOR: PBT FIBER REINFORCED (UL94V-0 RATED)

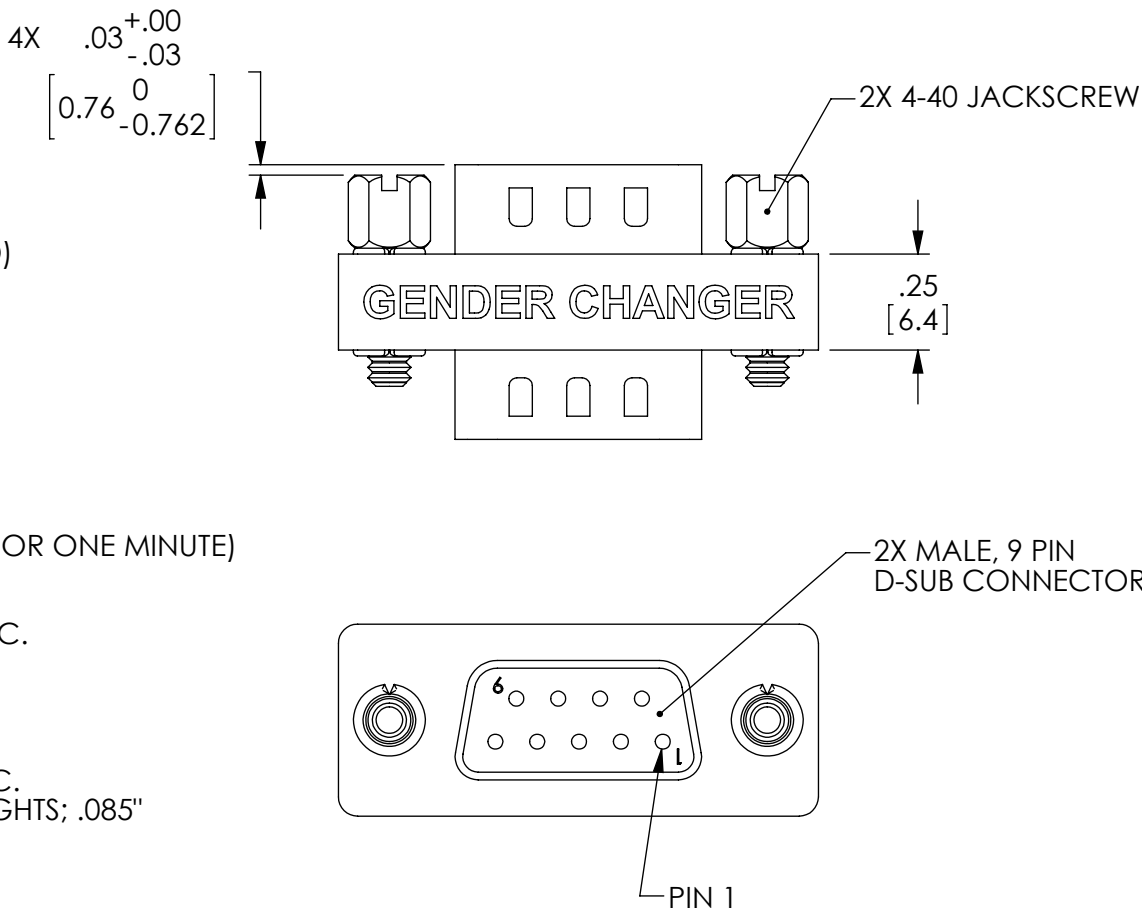
FINISH:
SHELL: TIN/NICKEL PLATED
CONTACTS: GOLD FLASH PLATED, 1-5μ INCHES
HARDWARE: NICKEL PLATED

ELECTRICAL:
CURRENT RATING: 3 AMP
INSULATION RESISTANCE: 1000 MΩ MIN @500 VDC
DIELECTRIC WITHSTANDING VOLTAGE: 1000 VAC (FOR ONE MINUTE)


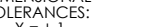
MISCELLANEOUS:
OPERATING TEMPERATURE RANGE: -55°C TO +105°C.
ALL PINS WIRED STRAIGHT THROUGH.
COMPONENT SHALL BE TESTED FOR CONTINUITY.

LABELING:
PANTONE 2945 BLUE. "L-COM" FONT MyriaMM ITALIC.
"GENDER CHANGER" FONT ARIAL BOLD, TEXT HEIGHTS; .085"
TEXT COLOR; WHITE.

PACKAGING:
COMPONENT SHALL BE INDIVIDUALLY PACKAGED IN
ACCORDANCE WITH L-COM SPECIFICATION PS-0031.



RoHS Compliant ✓

UNLESS OTHERWISE SPECIFIED, DIMENSIONS ARE IN INCHES [mm] DIMENSIONAL TOLERANCES: .X = ±.1 .XX = ±.01 .XXX = ±.005 ANGULAR TOLERANCES: ALL = ± 1°	APPROVALS DRAWN BY D.PARHAM 11/12/2001		DATE 11/12/2001		 NORTH ANDOVER, MA 01845	
	CHECKED BY T.CLARK 11/12/2001		CATEGORY D-SUBMINIATURE			
	APPROVED BY R.CARRICK 11/13/2001		PRODUCT DESCRIPTION ADPT, GNDR CHGR DB9 SLIM M/M			
	CONFIGURATION DETAILS OF UNDIMENSIONED FEATURES MAY VARY		SIZE B 43321		FSCM NO. DWG. NO. DGB9M	REV. G
PROJECTION 	COLOR VARIATIONS MAY OCCUR		SCALE: 2:1 CAD FILE: DGB9M.SLDDRW		SHEET 1 OF 1	