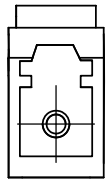
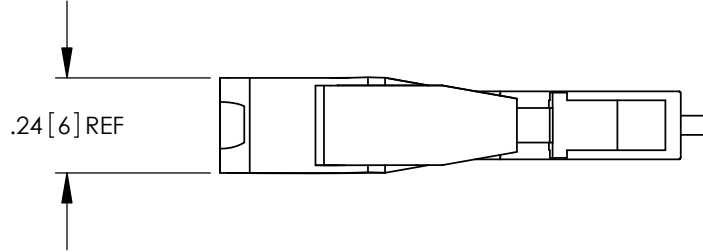


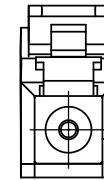
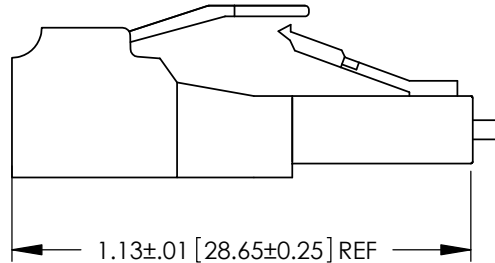
THE INFORMATION CONTAINED IN THIS DRAWING IS THE SOLE PROPERTY OF L-COM, INC. ANY REPRODUCTION IN PART OR WHOLE WITHOUT THE WRITTEN PERMISSION OF L-COM, INC. IS PROHIBITED.

RoHS Compliant ✓

REVISIONS			
REV	DESCRIPTION	DATE	APPROVED
A	INITIAL RELEASE	10/23/07	D.FRISIELLO
B	ECN 3066: UPDATE DWG FORMAT	10/31/07	D.GRIFFIN
C	ECN3399: CHNGD DIMS TO REF. ADDED ROHS STAMP.	06/19/08	D. PARHAM
D	ECN 6484: REVISE PICTORIALY PER VENDER SPEC.	10/24/12	D.FRISIELLO



LC JACK



LC PLUG

MODEL	ATTENUATION	BACK REFLECTION
FOATLCU-05D	5dB	≤ -55dB
FOATLCU-10D	10dB	≤ -55dB
FOATLCU-15D	15dB	≤ -55dB
FOATLCU-20D	20dB	≤ -55dB
FOATLCU-25D	25dB	≤ -55dB

NOTES:

- ATTENUATOR UTILIZES "UPC" POLISH.
- ATTENUATOR IS PACKAGED WITH TWO DUST CAPS INSTALLED(NOT SHOWN).
- OPERATING TEMPERATURE RANGE: -40 ° C TO +75 ° C.
- SINGLE MODE WAVELENGTH RANGE: 1310-1550 nm.
- ALL DIMENSIONS ARE FOR REFERENCE ONLY.
- COMPONENT SHALL BE INDIVIDUALLY PACKAGED IN ACCORDANCE WITH L-COM SPECIFICATION PS-0031.

UNLESS OTHERWISE SPECIFIED, DIMENSIONS ARE IN INCHES [mm] OVERALL CABLE LENGTH TOLERANCE: ≤12 [305] = +1 [25] / -0 >12 [305] ≤60 [1524] = +2 [51] / -0 >60 [1524] ≤120 [3048] = +4 [102] / -0 >120 [3048] ≤300 [7620] = +6 [152] / -0 >300 [7620] = +3% / -0%	APPROVALS	DATE		45 BEECHWOOD DRIVE NORTH ANDOVER, MA 01845		
	DRAWN BY D.FRISIELLO	10/23/07				
ALL OTHER DIMENSIONAL TOLERANCES: .X = ± .2 .XX = ± .02 .XXX = ±.005	CHECKED BY D.PARHAM	10/23/07	CATEGORY FIBER OPTICS			
	APPROVED BY P.McNEIL	10/23/07	PRODUCT DESCRIPTION FIBER LC UPC ATTENUATOR			
PROJECTION 	CONFIGURATION DETAILS OF UNDIMENSIONED FEATURES MAY VARY	COLOR VARIATIONS MAY OCCUR	SIZE A	FSCM NO. 43321	DWG. NO. FOATLCU	REV. D
REF	SCALE: NONE	CAD FILE: FOATLCU.SLDDRW	SHEET 1 OF 1			