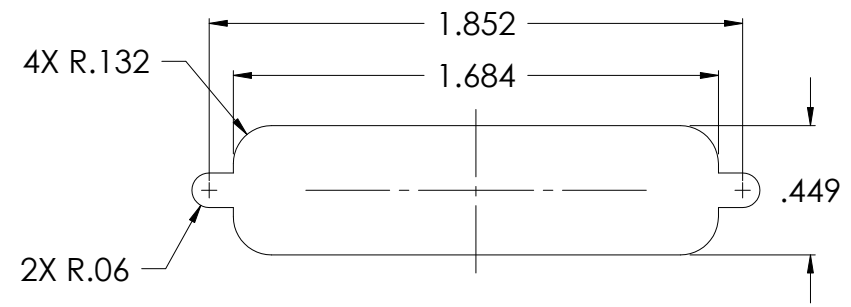
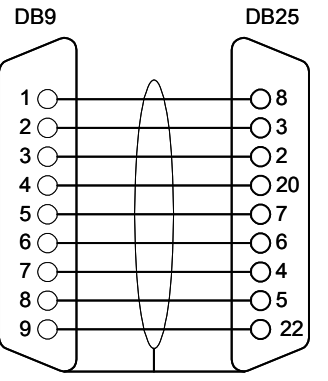
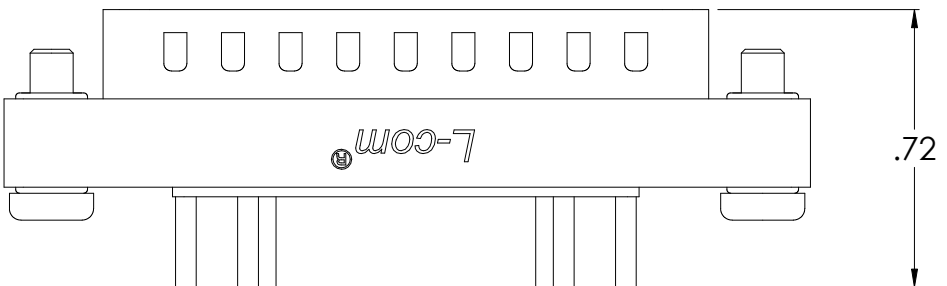
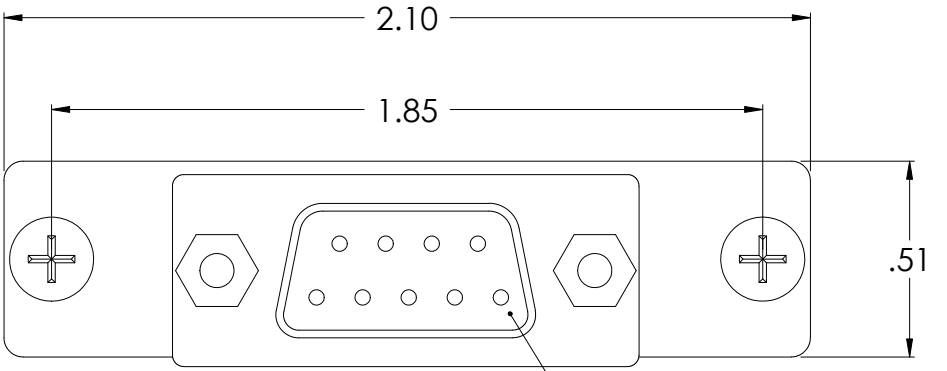


THE INFORMATION CONTAINED IN THIS DRAWING IS THE SOLE PROPERTY OF L-COM, INC. ANY REPRODUCTIONS IN PART OR WHOLE WITHOUT THE WRITTEN PERMISSION OF L-COM, INC. IS PROHIBITED.

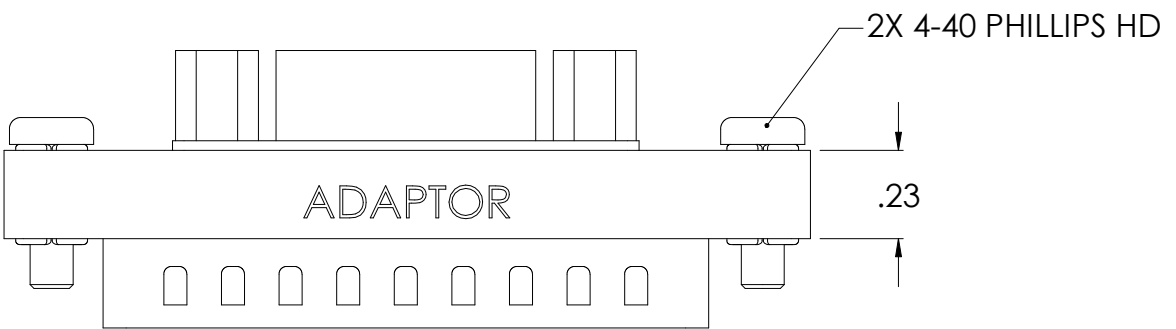
REVISIONS			
REV	DESCRIPTION	DATE	APPROVED
A	RELEASED FOR PRODUCTION	09/28/00	R.CARRICK
B	PRODUCT VALIDATION UPDATE (ECN)	01/20/03	MCCORMICK
C	REWORDED SPECIFICATIONS FOR LABELING	10/15/04	M.LAHEY



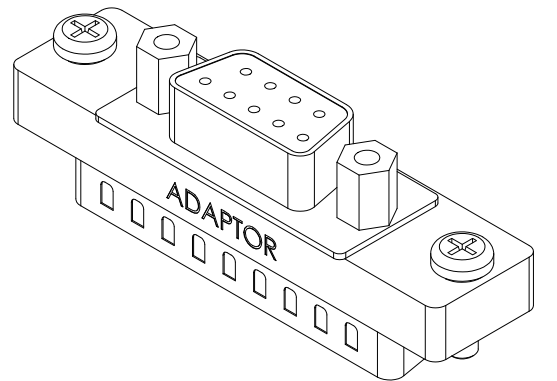
RECOMMENDED
PANEL OPENING
MAX PANEL THICKNESS: 0.06"



FEMALE, 9 PIN
D-SUB CONNECTOR



MALE, 25 PIN
D-SUB CONNECTOR



SPECIFICATIONS;

MATERIALS;
SHELL: COLD ROLLED STEEL
CONTACTS: BRASS
INSULATOR: PBT UL94-V0 RATED

FINISH;
SHELL: TIN PLATED
CONTACT: GOLD FLASH

LABELING:
PANTONE 2945 BLUE. "L-COM" FONT MyriaMM ITALIC.
"ADAPTOR" FONT ARIAL BOLD, TEXT HEIGHTS; .085"
TEXT COLOR; WHITE.



UNLESS OTHERWISE SPECIFIED
DIMENSIONS ARE IN INCHES
TOLERANCES ARE:
.X ±.1
.XX ±.05
.XXX ±.005
CABLE LENGTH TOLERANCE
<300" ±5% >300" ±2%

APPROVALS	DATE
DRAWN BY R.CARRICK	12/03/2001
CHECKED BY MCCORMICK	12/03/2001
APPROVED BY D.PARHAM	12/03/2001

L-com 45 BEECHWOOD DRIVE
CONNECTIVITY PRODUCTS NORTH ANDOVER, MA
01845

PRODUCT DESCRIPTION
ADAPTOR, DB25 MALE/DB9 FEMALE

DRAWING TITLE
OUTLINE DRAWING

SIZE	FSCM NO.	DWG. NO.	REV.
B	43321	DMA010FM-OD1	C

SCALE: 2:1 CAD FILE: DMA010FM-OD1.SLDDRW SHEET 1 OF 1