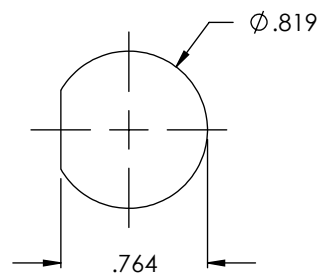
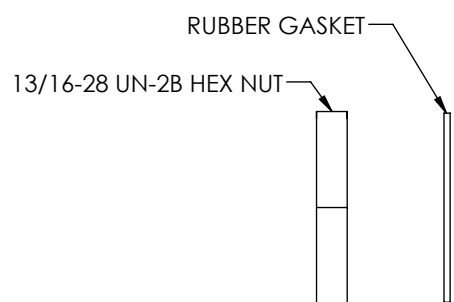


THE INFORMATION CONTAINED IN THIS DRAWING IS THE SOLE PROPERTY OF L-COM, INC. ANY REPRODUCTIONS IN PART OR WHOLE WITHOUT THE WRITTEN PERMISSION OF L-COM, INC. IS PROHIBITED.

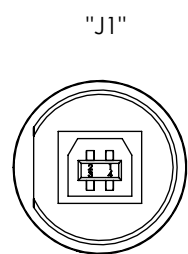
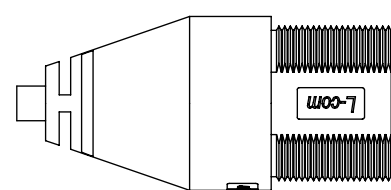
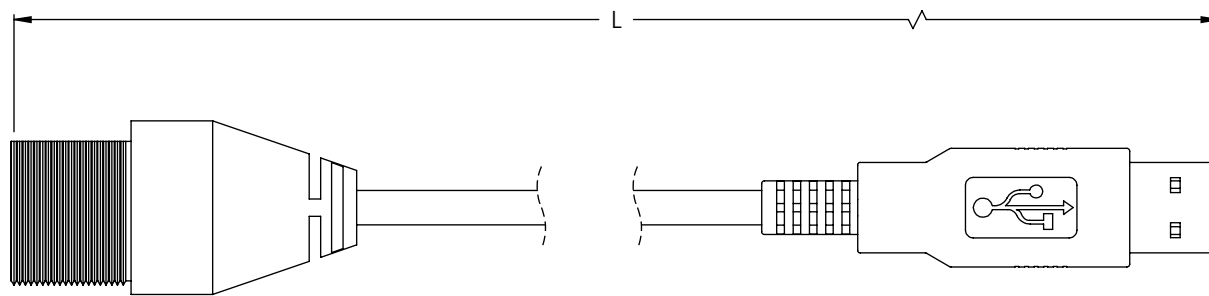
REVISIONS			
REV	DESCRIPTION	DATE	CHANGED BY
A	INITIAL RELEASE	11/22/05	J. KIEZULAS
B	ECN# 2419 ADDED .463" MIN DIMENSION	05/17/06	MCCORMICK
C	ECN3378: ADDED 1&3 METER P/N'S, UPDATED FORMAT.	06/11/08	D. PARHAM



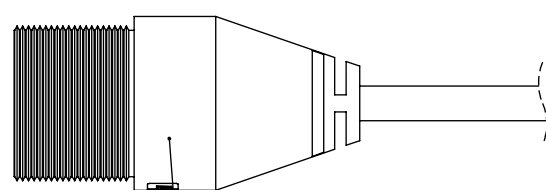
RECOMMENDED PANEL OPENING



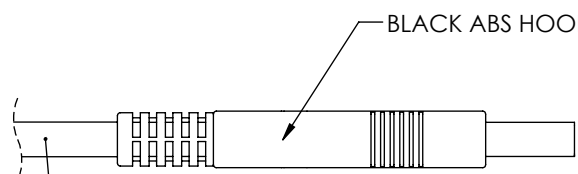
NUT AND GASKET SHOWN IN THIS VIEW ONLY FOR CLARITY



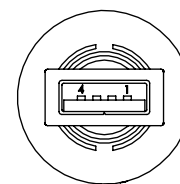
SERIES B USB 2.0 JACK
COPPER ALLOY CONTACTS
WITH 30 MICROINCHES GOLD
PLATING OVER NICKEL PLATING
PBT CONNECTOR BODY



WATERPROOF HOUSING
BLACK ABS UL94V-0

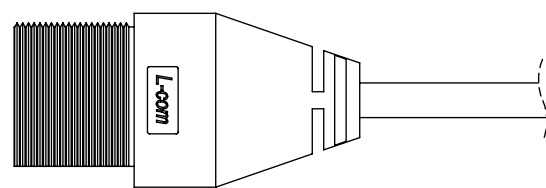


ONE 28 AWG TWISTED PAIR (DATA) PLUS TWO 24 AWG
POWER CONDUCTORS. OVERALL ALUMINIZED POLYESTER
SHIELD WITH DRAIN WIRE PLUS TINNED COPPER BRAID
SHIELD. PVC OUTER JACKET IS BLACK.



SERIES A USB 2.0 PLUG
COPPER ALLOY CONTACTS
WITH 30 MICROINCHES GOLD
PLATING OVER NICKEL PLATING

MODEL NUMBER	DIM "L" (METER)
WPUSBBA-05M	0.5
WPUSBBA-1M	1.0
WPUSBBA-2M	2.0
WPUSBBA-3M	3.0
WPUSBBA-5M	5.0



3X EMBOSSED L-COM LOGO
IN RECESSED POCKET. MAKE
FLUSH OR BELOW TOP SURFACE

NOTES:

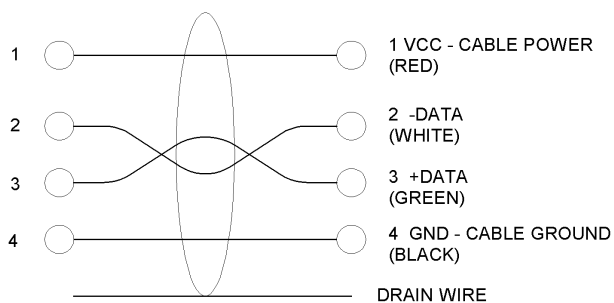
THESE CABLE ASSEMBLIES ARE CONSTRUCTED TO MEET THE REQUIREMENTS OF THE UNIVERSAL SERIES BUS SPECIFICATION USB 2.0

DRAIN WIRE CONNECTED TO THE METAL SHELL AT EACH END

CABLE ASSEMBLY TO BE TESTED FOR CONTINUITY

CABLE ASSEMBLY INDIVIDUALLY PACKAGED IN A POLYBAG

WATERPROOF TO IP66, IP67



WIRING DIAGRAM

UNLESS OTHERWISE SPECIFIED,
DIMENSIONS ARE IN INCHES [mm]
OVERALL CABLE LENGTH TOLERANCE:
≤12 [305] = +1 [25] / -0
>12 [305] ≤60 [1524] = +2[51] / -0
>60 [1524] ≤120 [3048] = +4 / -0
>120 [3048] ≤300 [7620] = +6 / -0
>300 [7620] = +5% / -0%

ALL OTHER DIMENSIONAL TOLERANCES:
.X = .3
.XX = .15



APPROVALS	DATE
DRAWN BY J. KIEZULAS	10/31/2005
CHECKED BY M. LAHEY	10/31/2005
APPROVED BY R. CARRICK	10/31/2005

L-com CONNECTIVITY PRODUCTS		45 BEECHWOOD DRIVE NORTH ANDOVER, MA 01845	
CATEGORY		USB	
PRODUCT DESCRIPTION			
CBL, WATER PROOF USBB-F/A-M			
SIZE	FSCM NO.	DWG. NO.	REV.
B	43321	WPUSBBA	C
SCALE: 1:1		CAD FILE: WPUSBBA.SLDDRW	SHEET 1 OF 1