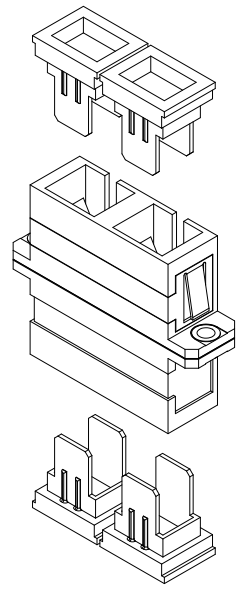
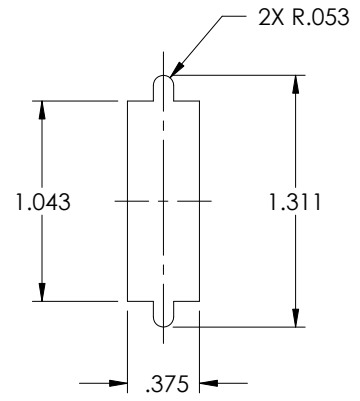
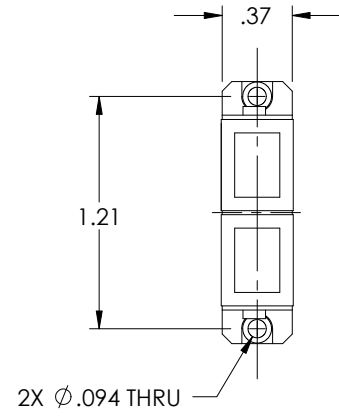
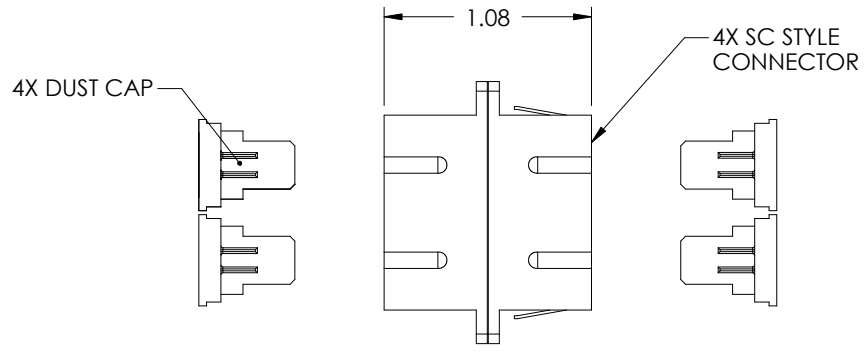


THE INFORMATION CONTAINED IN THIS DRAWING IS THE SOLE PROPERTY OF L-COM, INC. ANY REPRODUCTION IN PART OR WHOLE WITHOUT THE WRITTEN PERMISSION OF L-COM, INC. IS PROHIBITED.

REVISIONS			
REV	DESCRIPTION	DATE	APPROVED
A	RELEASED FOR PRODUCTION	12/26/00	MCCORMICK
B	ECN# 1605 ADDED COMPONENT SPECIFICATION TABLE	12/03/03	MCCORMICK
.	.	.	.
.	.	.	.



Component Specifications	
Material	
Sleeve	Ceramic
Body	Engineering Plastic, Blue
Dust cap	Engineering Plastic
Spring Lever	Engineering Plastic, Blue
Mounting Clip	Stainless Steel

CS-108

RECOMMENDED
PANEL HOLE

UNLESS OTHERWISE SPECIFIED,
DIMENSIONS ARE IN INCHES
TOLERANCES ARE:
.X ±.1
.XX ±.05
.XXX ±.005
CABLE LENGTH TOLERANCE
<300" ±5% >300" ±2%

APPROVALS	DATE
DRAWN BY C.MCCORMICK	12/26/00
CHECKED BY DFP	01/12/01
APPROVED BY R.CARRICK	01/12/01

CONFIGURATION DETAILS OF
UNDIMENSIONED FEATURES
MAY VARY

L-com CONNECTIVITY PRODUCTS		45 BEECHWOOD DRIVE NORTH ANDOVER, MA 01845	
PRODUCT DESCRIPTION SC-SC DUPLEX COUPLER, CERAMIC SLEEVE			
DRAWING TITLE OUTLINE DRAWING			
SIZE A	FSCM NO. 43321	DWG. NO. FOA-005A-OD1	REV. B
SCALE: NONE CAD FILE: FOA-005A-OD1.SLDDRW			SHEET 1 OF 1