

Free eNewsletter

Enter your E-mail



Shop By Type

Cable Assemblies
Adapters
Connectors
Rack Panels
Bulk Cable
Tools
Switch Boxes
Network Cards
Hubs & Switches
Converters & Transceivers
KVM Switches
Antennas

Overstock/Sale Items
Top 10 Products

Shop By Category

IEEE-488 GPIB
Coaxial
Monitor, Video
Fiber Optic
D-Subminiature
Modular
USB, DIN, Firewire, SCSI, and Others
Wireless Infrastructure
Weatherproof Enclosures
Networking and Other Equipment

Product Wizards

Cable Assemblies
Adapters
Connectors
Rack Panels
Tools
Switch Boxes
Network Cards
Hubs or Switches
Ethernet Converters
KVM Switches

Technical Resources

FAQs
Connector Chart
Glossary
Tutorials
Tips and Videos
White Papers
Catalog Downloads
eNewsletter Archive

You Are Here: [Home](#) > [Fiber Optic](#) > [Adapters, Couplers](#) > [FOA-003](#) > **FOA-003**

Fiber Coupler, FC / FC (Square Mounting), Bronze Alignment Sleeve

These L-com simplex metal FC couplers are designed for mounting in standard round cut out style panels. This series features either bronze or ceramic alignment sleeves to meet your specific design requirements. Additionally, these couplers can be used with PC or UPC style fiber connectors. Contact us today for large project volume discounts.



Features for this Fiber Optic product

- Used to connect either PC or UPC polished FC Fiber cables
- Quality metal construction ensures long life and durability
- Dust caps protect against debris and contamination
- Bronze alignment sleeve supports Multimode applications
- Order online today!

Details for this Fiber Optic product

| | |
|---------------------------------|---|
| L-com Item # | FOA-003 |
| Manufacturer | L-com |
| ASIN # (More) | B000AAL97S |
| UPC # (More) | 822335023093 |
| RoHS Status | RoHS Compliant (More) |
| Alignment Sleeve | Bronze |

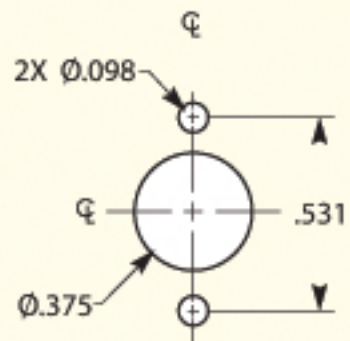
[Diagram](#)

[Catalog Page](#)

[2D Drawing \(.pdf\)](#)

[3D CAD Model \(.step\)](#)

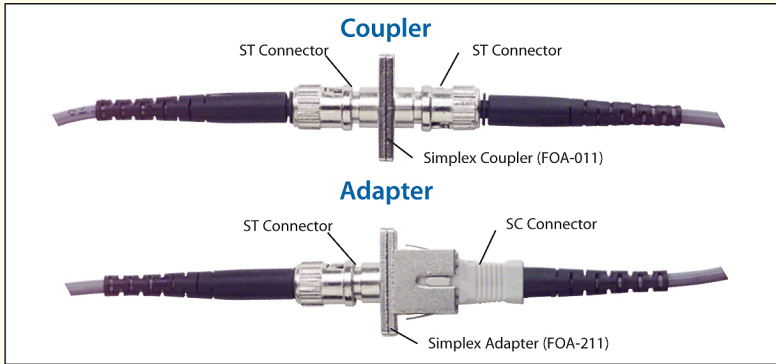
ADAPTOR MOUNTING DIAGRAM



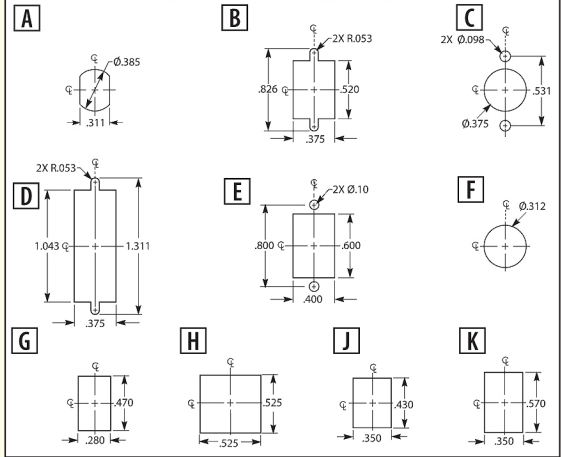
Dimensions are in inches.

Fiber Optic Couplers and Adapters

These devices are used to join together individual connectorized fiber assemblies. They are often used in a patch panel and are mounted on sub-panels. If the two connectorized fiber assemblies to be connected have the same style fiber connectors (ST to ST, SC to SC, etc.) then the connecting device is called a coupler. If the two connectorized fiber assemblies to be connected have different style connectors then the connecting device is called an adapter.

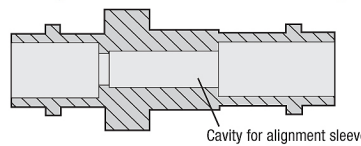


Common Adapter Mounting Diagrams

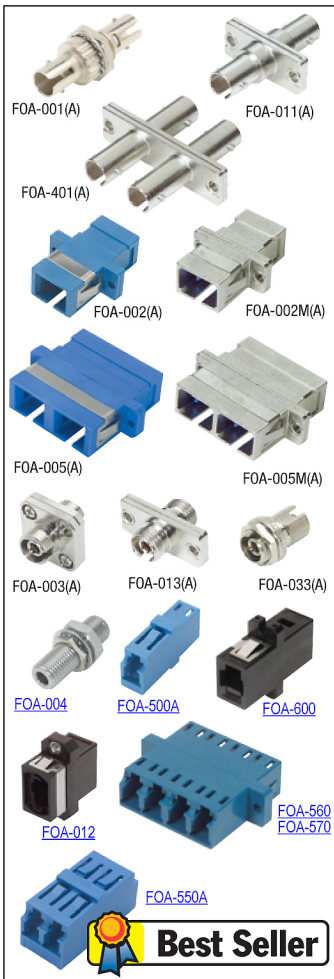


The alignment sleeve is the most critical component of a fiber optic adapter. Bronze sleeves are more durable but the precision is not as good as ceramic. Ceramic ferrules offer a more precise alignment, but they are somewhat less durable. Bronze alignment sleeves are commonly used in multimode applications where precision alignment is not as critical.

Cutaway Side View of ST-ST Coupler



- | | |
|---|---|
| <p>CERAMIC Alignment Sleeve</p> <ul style="list-style-type: none"> • Better alignment • More expensive | <p>BRONZE Alignment Sleeve</p> <ul style="list-style-type: none"> • Better durability • Less expensive |
|---|---|



| Item # | Description | Body | Sleeve | Mtg. Code | 1-9 | 10-24 | 25-99 | 100-249 | 250-499 |
|--------|-------------|------|--------|-----------|-----|-------|-------|---------|---------|
|--------|-------------|------|--------|-----------|-----|-------|-------|---------|---------|

Fiber Optic Simplex and Duplex Couplers

These fiber optic couplers are for the most part available in both Simplex (single connection) and Duplex (two connections) styles. Most are available with both plastic and metal bodies and with bronze or ceramic alignment sleeves. Suitable for both PC and UPC polish fibers.

ST to ST Simplex Fiber Optic Couplers

| | | | | | | | | | |
|----------|---------------|-------|---------|---|--|--|--|--|--|
| FOA-001 | Fiber Coupler | Metal | Bronze | A | | | | | |
| FOA-001A | Fiber Coupler | Metal | Ceramic | A | | | | | |
| FOA-011 | Fiber Coupler | Metal | Bronze | B | | | | | |
| FOA-011A | Fiber Coupler | Metal | Ceramic | B | | | | | |

ST to ST Duplex Fiber Optic Couplers

| | | | | | | | | | |
|----------|---------------|-------|---------|---|--|--|--|--|--|
| FOA-401 | Fiber Coupler | Metal | Bronze | D | | | | | |
| FOA-401A | Fiber Coupler | Metal | Ceramic | D | | | | | |

SC to SC Simplex Fiber Optic Couplers

| | | | | | | | | | |
|-----------|---------------|---------|---------|---|--|--|--|--|--|
| FOA-002 | Fiber Coupler | Plastic | Bronze | B | | | | | |
| FOA-002A | Fiber Coupler | Plastic | Ceramic | B | | | | | |
| FOA-002M | Fiber Coupler | Metal | Bronze | B | | | | | |
| FOA-002MA | Fiber Coupler | Metal | Ceramic | B | | | | | |

SC to SC Duplex Fiber Optic Couplers

| | | | | | | | | | |
|-----------|---------------|---------|---------|---|--|--|--|--|--|
| FOA-005 | Fiber Coupler | Plastic | Bronze | D | | | | | |
| FOA-005A | Fiber Coupler | Plastic | Ceramic | D | | | | | |
| FOA-005M | Fiber Coupler | Metal | Bronze | D | | | | | |
| FOA-005MA | Fiber Coupler | Metal | Ceramic | D | | | | | |

FC to FC Simplex Fiber Optic Couplers

| | | | | | | | | | |
|----------|---------------|-------|---------|---|--|--|--|--|--|
| FOA-003 | Fiber Coupler | Metal | Bronze | C | | | | | |
| FOA-003A | Fiber Coupler | Metal | Ceramic | C | | | | | |
| FOA-013 | Fiber Coupler | Metal | Bronze | B | | | | | |
| FOA-013A | Fiber Coupler | Metal | Ceramic | B | | | | | |
| FOA-033 | Fiber Coupler | Metal | Bronze | A | | | | | |
| FOA-033A | Fiber Coupler | Metal | Ceramic | A | | | | | |

SMA to SMA Simplex Fiber Optic Coupler

| | | | | | | | | | |
|---------|---------------|-------|------|---|--|--|--|--|--|
| FOA-004 | Fiber Coupler | Metal | None | F | | | | | |
|---------|---------------|-------|------|---|--|--|--|--|--|

LC to LC Simplex / Duplex Fiber Optic Coupler

| | | | | | | | | | |
|----------|-----------------------|---------|---------|---|--|--|--|--|--|
| FOA-500A | Simplex Fiber Coupler | Plastic | Ceramic | G | | | | | |
| FOA-550A | Duplex Fiber Coupler | Plastic | Ceramic | H | | | | | |

LC to LC Quad Fiber Optic Couplers

| | | | | | | | | | |
|---------|--------------------|---------|---------|---|--|--|--|--|--|
| FOA-560 | Quad Fiber Coupler | Plastic | Bronze | D | | | | | |
| FOA-570 | Quad Fiber Coupler | Plastic | Ceramic | D | | | | | |

MT-RJ to MT-RJ Fiber Optic Coupler

Use of this coupler requires one of the two mating MT-RJ connectors to contain alignment pins.

| | | | | | | | | | |
|---------|---------------|---------|------|---|--|--|--|--|--|
| FOA-600 | Fiber Coupler | Plastic | None | B | | | | | |
|---------|---------------|---------|------|---|--|--|--|--|--|

MPO to MPO Fiber Optic Coupler

| | | | | | | | | | |
|---------|---------------|---------|------|---|--|--|--|--|--|
| FOA-012 | Fiber Coupler | Plastic | None | E | | | | | |
|---------|---------------|---------|------|---|--|--|--|--|--|

Best Seller

What is the difference between a fiber optic coupler and adapter?

Although the terms are sometimes interchanged, a coupler typically connects like connectors (i.e. SC to SC), while adapters connect different connectors (i.e. SC to FC).