

Item #	Description
--------	-------------

## DIN and Mini DIN Adapters and Connectors

These adapters are an L-com exclusive. Useful in many applications including S-video, computer mice, keyboards and instrumentation. A unique design permits easy mounting in standard size 0.5" and 0.75" circular or D shaped openings allowing the use of common punch tooling. Adapter bodies are machined from solid brass. Bright nickel plating provides corrosion resistance and a quality appearance. Gold plated contacts ensure reliable connections. Custom versions will be considered with modest minimums, please contact our sales group for assistance.



## DIN and Mini DIN Feed-Thru Adapters - Panel and Wall Plate Mountable

These exclusive adapters offer a unique design suitable for panel mounting DIN and Mini DIN adapters. Female-Female gender.

MD44FE	Feed-Thru Adapter, Mini DIN 4, Female / Female
MD66FE	Feed-Thru Adapter, Mini DIN 6, Female / Female
MD88FE	Feed-Thru Adapter, Mini DIN 8, Female / Female
DD55E	Feed-Thru Adapter, DIN 5, Female / Female

## Mini DIN Bulkhead Jack to Flying Leads

Machined adapters utilize 4, 6 or 8 26 AWG color coded wires for chassis termination.

MD44FE	Mini DIN 4 Bulkhead Jack / Leads, Front Mount
MD66FE	Mini DIN 6 Bulkhead Jack / Leads, Front Mount
MD88FE	Mini DIN 8 Bulkhead Jack / Leads, Front Mount
MD44FR	Mini DIN 4 Bulkhead Jack / Leads, Rear Mount
MD66FR	Mini DIN 6 Bulkhead Jack / Leads, Rear Mount
MD88FR	Mini DIN 8 Bulkhead Jack / Leads, Rear Mount

## Mini DIN Bulkhead Adapter Styles



## Mini DIN 6 and 8 Gender Changers

DM8510E	Gender Changer, Mini DIN 6 Female / Female
DM8518E	Gender Changer, Mini DIN 8 Female / Female

## PS/2 Keyboard Adapters - Use to Interface AT Keyboard with IBM PS/2 Computer

DM8530	PS/2 Keyboard Adapter, Mini DIN 6 Male / DIN 5 Female
DM8531R	PS/2 Keyboard Adapter, Mini DIN 6 Female / DIN 5 Male

## Premium Mini DIN 6 Y Cable - Fully Populated - Double Shielded - Male to (2) Female

K23-MDY	Molded Y Cable, Mini DIN 6 Male / 2 Mini DIN 6 Female, 1.25 ft
---------	--

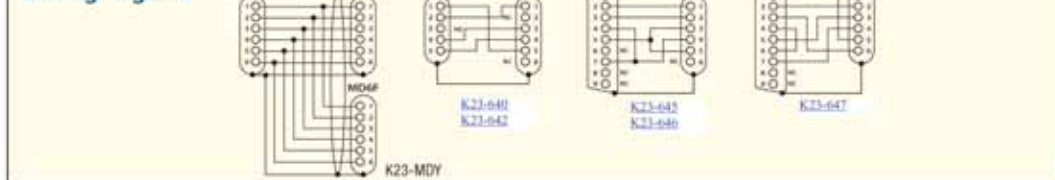
## DIN to Mini DIN Adapter Cables

K23-640	Molded Cable, DIN 5 Male / Mini DIN 6 Female, 0.67 ft
K23-642	Molded Cable, DIN 5 Female / Mini DIN 6 Male, 0.67 ft

## PS/2 Keyboard Adapters

K23-643	Generic Adapter, DB9 Female / Mini DIN 6 Female
K23-646	Generic Adapter, DB9 Male / Mini DIN 6 Male
K23-647	Enhanced Adapter, DB9 Female / Mini DIN 6 Female

## Wiring Legend

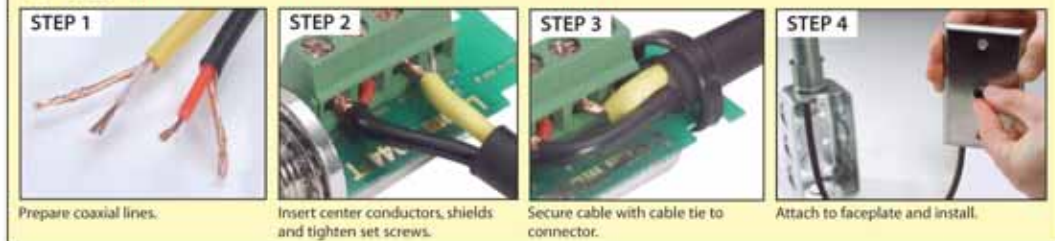


## Mini DIN 4 - S-Video Jack for Field Termination

The MD44FT Field Termination Mini DIN 4 Female jack offers a quick and easy field termination using common tools. Terminal blocks with set screws ensure reliable electrical connections. The terminal block area is clearly marked making field termination virtually foolproof. This unit is designed to fit common 0.5" circular or D style openings. The undercut PCB area provides a convenient area to secure a cable tie wrap resulting in a neat dressing for the terminated cable. Custom configurations will be considered with modest minimums.

MD44FT	Mini DIN 4 Female Field Termination Jack
--------	--

## TIP: Typical installation of an MD44FT field installable jack



MD44FT	Mini DIN 4 - S-Video Jack
Black 4	Center
Black 2	Shield
Yellow 3	Center
Yellow 1	Shield

