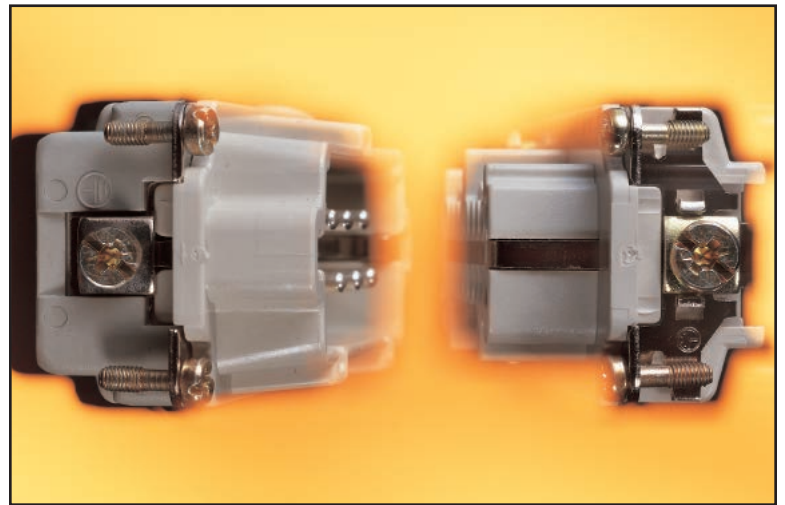


EPIC® Rectangular Connectors

HBE Series



The HBE series inserts are suitable for applications with high voltages and current. The inserts can be terminated in a variety of ways: screw, crimp, or “spring” cage clamp.



TECHNICAL DATA

Number of Contacts: 6, 10, 16, 24, 32, 48 (+PE)

Screw Termination & Crimp Termination:

Rated Voltage: VDE: 500V EPIC® HBE 6 - 48 UL: 600V EPIC® HBE 6 - 48
CSA: 600V EPIC® HBE 6 - 48

Rated Current: VDE: 16A EPIC® HBE 6 - 48 UL: 16A EPIC® HBE 6 - 48
CSA: 16A EPIC® HBE 6 - 48

Temperature Range: -40°C to +125°C

Cage Clamp:

Rated Voltage: VDE: 500V EPIC® HBE 6 - 48 UL: 600V EPIC® HBE 6 - 48
CSA: 600V EPIC® HBE 6 - 48

Rated Current: VDE: 16A EPIC® HBE 6 - 48 UL: 16A EPIC® HBE 6 - 48
CSA: 16A EPIC® HBE 6 - 48

Pollution Level: 3
Dimensioning Transient: 6 kV

Termination Type:

| | mm ² | AWG |
|--------------------------------|---------------------------|---------|
| Screw Termination: | 0.5 - 2.5 mm ² | 20 - 14 |
| Crimp Termination: | 0.5 - 4.0 mm ² | 20 - 12 |
| Cage Clamp Termination: | 0.5 - 2.5 mm ² | 20 - 14 |

Contacts:

Screw Termination: Copper alloy, silver plated
Crimp Termination: Copper alloy, silver plated/ gold plated
Cage Clamp Termination: Copper alloy, silver plated
Mating Cycles: 100 (higher mating cycles depending on the application)

Contact Resistance:

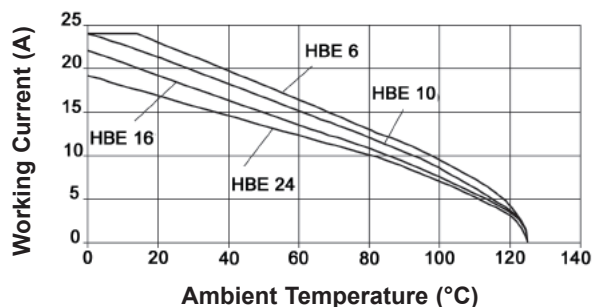
Screw Termination: <2 mOhm
Crimp Termination: <2 mOhm
Cage Clamp termination: 1.5 - 4 mOhm

EPIC[®] Rectangular Connectors

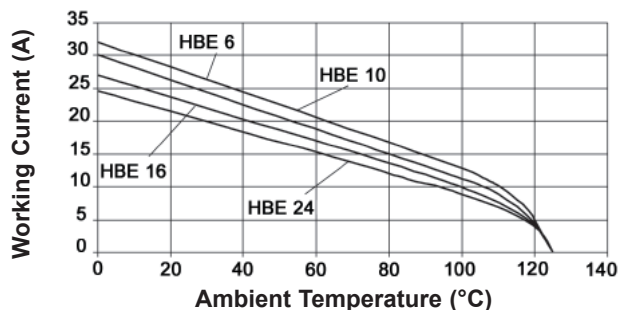
HBE Series

HBE INSERTS: DERATING CURVES

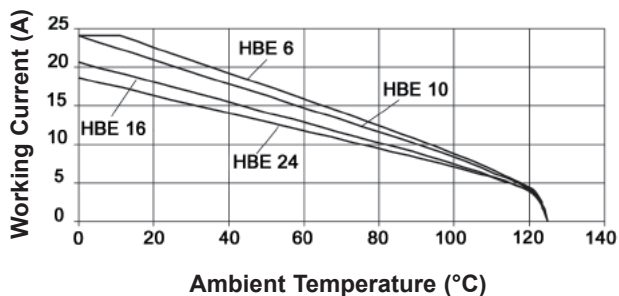
**HBE SCREW TERMINATED:
1.5 mm² (16 AWG)**



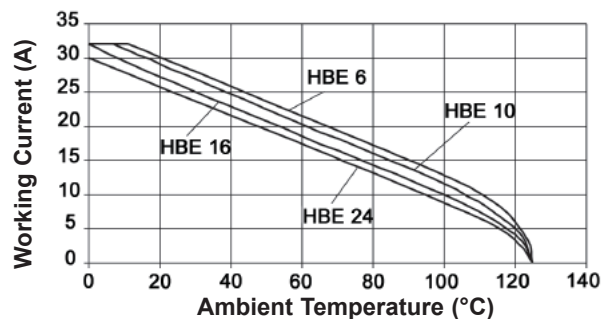
**HBE SCREW TERMINATED:
2.5 mm² (14 AWG)**



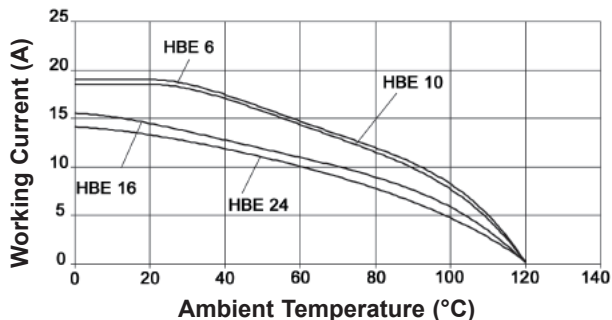
**HBE CRIMP TERMINATED:
1.5 mm² (16 AWG)**



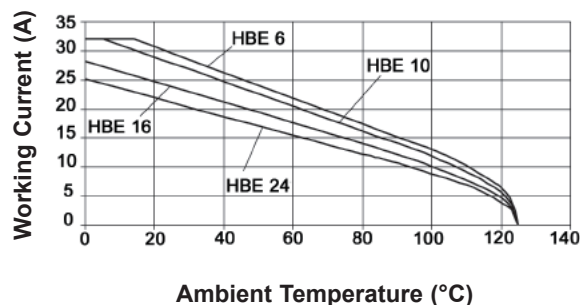
**HBE CRIMP TERMINATED:
2.5 mm² (14 AWG)**



**HBE CAGE CLAMP:
1.5 mm² (16 AWG)**



**HBE CAGE CLAMP:
2.5 mm² (14 AWG)**

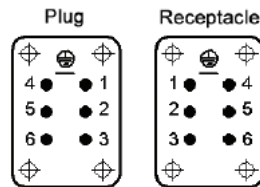


HBE 6 SCREW & CRIMP TERMINATED INSERTS

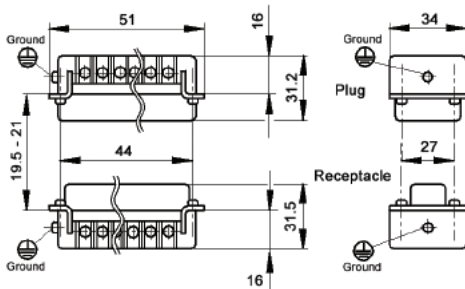
SCREW TERMINATED

CRIMP TERMINATED

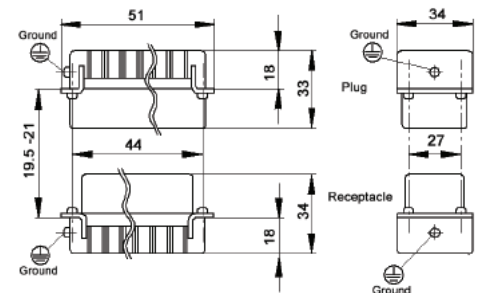
View from Cable Side



Contacts Sold Separately



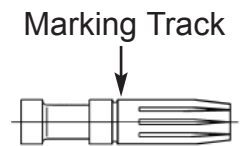
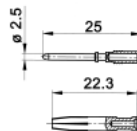
All dimensions are in mm.



| Description | Plug | Receptacle |
|--|----------|------------|
| Screw Terminated with wire protection | 10190000 | 10191000 |
| Screw Terminated without wire protection | 10190100 | 10191100 |
| Crimp Terminated: Machine | 10180000 | 10181000 |



MACHINED CONTACTS: DIAMETER 2.5 MM²



| Bags of 100 | | | | | | | |
|-----------------|-----|----------|----------|----------|----------|-----------------------|---------------------|
| mm ² | AWG | Silver | | Gold | | Stripping Length (mm) | # of Marking Tracks |
| | | Pin | Socket | Pin | Socket | | |
| 0.5 | 20 | 11190000 | 11195000 | 11192000 | 11197000 | Pin=7.4, Socket =7.3 | - |
| .75 - 1.0 | 18 | 11190100 | 11195100 | 11192100 | 11197100 | Pin=7.4, Socket =7.3 | 1 |
| 1.5 | 16 | 11190200 | 11195200 | 11192200 | 11197200 | Pin=7.4, Socket =7.3 | 2 |
| 2.5 | 14 | 11190300 | 11195300 | - | - | Pin=7.4, Socket =7.3 | 3 |
| 4.0 | 12 | 11190400 | 11195400 | - | - | Pin=7.4, Socket =7.3 | - |

Part number= 1 contact



Crimp Tool
11147000



Crimp Dies
11147100

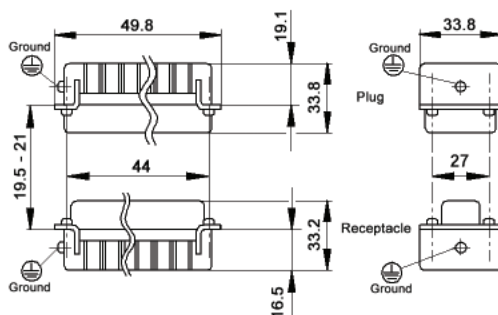


Locator
11147200

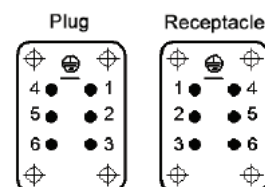
For removal of contacts use a slotted screwdriver.
No special tool is necessary.

Please note that the crimp range for this tool is 0.14 to 4.0 mm² (AWG 26 - 12) with the appropriate crimp dies.

HBE 6 SCREWLESS SPRING CAGE CLAMP INSERTS



View from Cable Side



All dimensions are in mm.

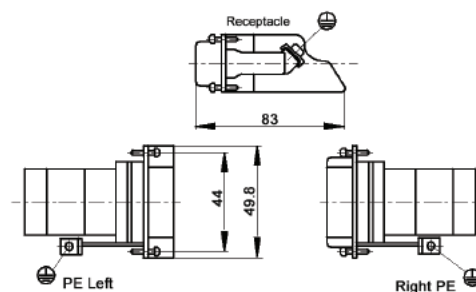
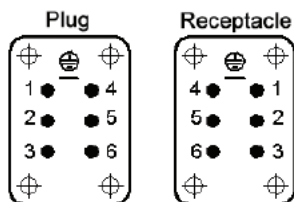


| Description | Plug | Receptacle |
|----------------------|----------|------------|
| Screwless Cage Clamp | 10400000 | 10401000 |

SCREW TERMINATED TERMINAL BLOCK INSERTS



View from Cable Side



All dimensions are in mm.



| Description | Receptacle |
|------------------------------|------------|
| Terminal Block: Right Ground | 70311100 |
| Terminal Block: Left Ground | 70310100 |

One terminal block insert mates with one screw terminated insert.

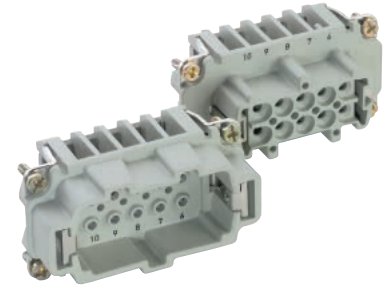
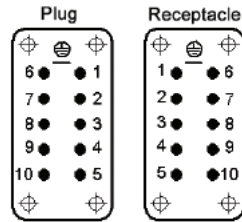
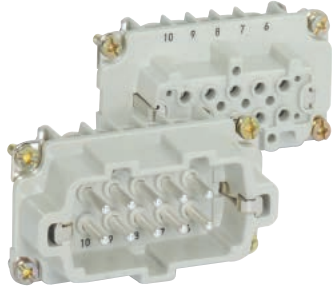
These terminal block inserts only fit in HBE 6 panel mount bases

HBE 10 SCREW & CRIMP TERMINATED INSERTS

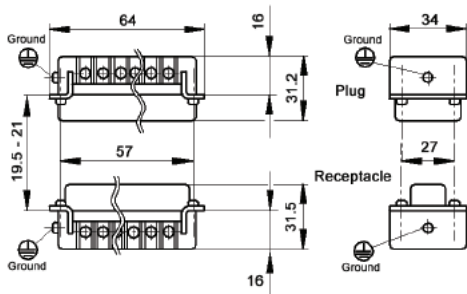
SCREW TERMINATED

CRIMP TERMINATED

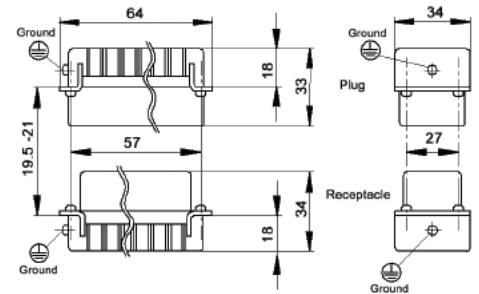
View from Cable Side



Contacts Sold Separately



All dimensions are in mm.



| Description | Plug | Receptacle |
|--|----------|------------|
| Screw Terminated with wire protection | 10192000 | 10193000 |
| Screw Terminated without wire protection | 10192100 | 10193100 |
| Crimp Terminated: Machine | 10182000 | 10183000 |



MACHINED CONTACTS: DIAMETER 2.5 MM²



| Bags of 100 | | | | | | | |
|-----------------|-----|----------|----------|----------|----------|-----------------------|---------------------|
| mm ² | AWG | Silver | | Gold | | Stripping Length (mm) | # of Marking Tracks |
| | | Pin | Socket | Pin | Socket | | |
| 0.5 | 20 | 11190000 | 11195000 | 11192000 | 11197000 | Pin=7.4, Socket =7.3 | - |
| .75 - 1.0 | 18 | 11190100 | 11195100 | 11192100 | 11197100 | Pin=7.4, Socket =7.3 | 1 |
| 1.5 | 16 | 11190200 | 11195200 | 11192200 | 11197200 | Pin=7.4, Socket =7.3 | 2 |
| 2.5 | 14 | 11190300 | 11195300 | - | - | Pin=7.4, Socket =7.3 | 3 |
| 4.0 | 12 | 11190400 | 11195400 | - | - | Pin=7.4, Socket =7.3 | - |

Part number= 1 contact



Crimp Tool
11147000



Crimp Dies
11147100

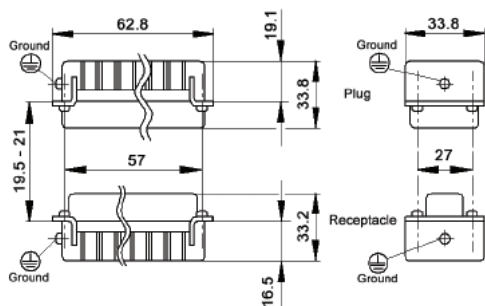


Locator
11147200

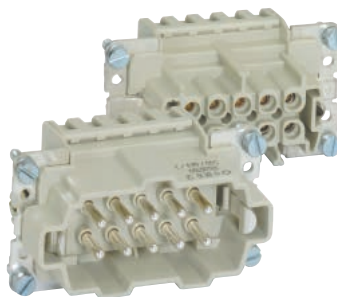
For removal of contacts use a slotted screwdriver.
No special tool is necessary.

Please note that the crimp range for this tool is 0.14 to 4.0 mm² (AWG 26 - 12) with the appropriate crimp dies.

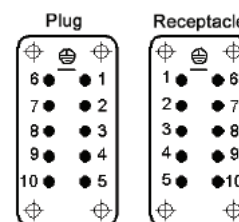
HBE 10 SCREWLESS SPRING CAGE CLAMP INSERTS



All dimensions are in mm.



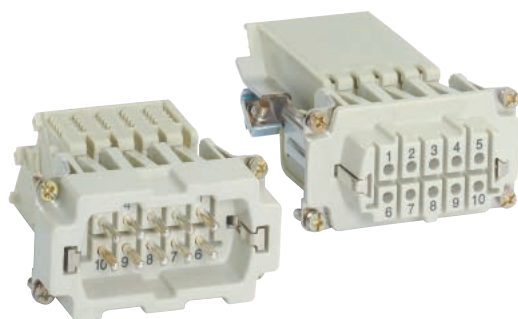
View from Cable Side



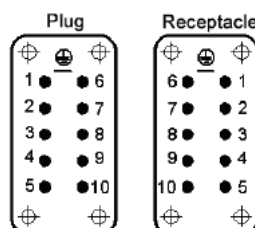
HBE 10
Pg 356

| Description | Plug | Receptacle |
|----------------------|----------|------------|
| Screwless Cage Clamp | 10400100 | 10401100 |

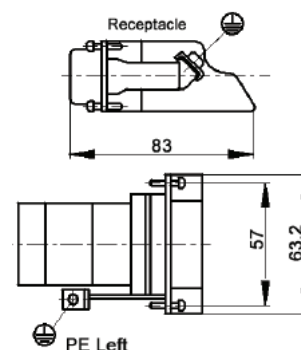
HBE 10 SCREW TERMINATED TERMINAL BLOCK INSERTS



View from Cable Side



All dimensions are in mm.



HBE 10
Pg 357

These terminal block inserts only fit in HBE 10 panel mount bases

One terminal block insert mates with one screw terminated insert.

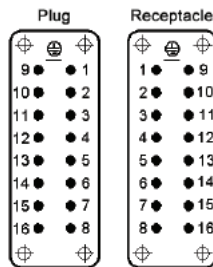
| Description | Receptacle |
|-----------------------------|------------|
| Terminal Block: Left Ground | 70312100 |

HBE 16 SCREW & CRIMP TERMINATED INSERTS

SCREW TERMINATED



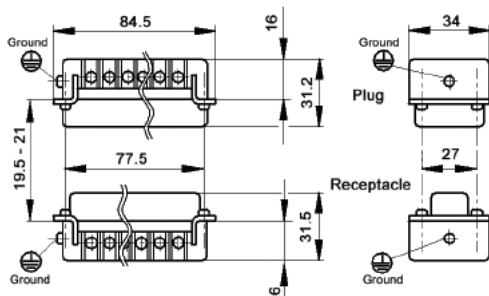
View from Cable Side



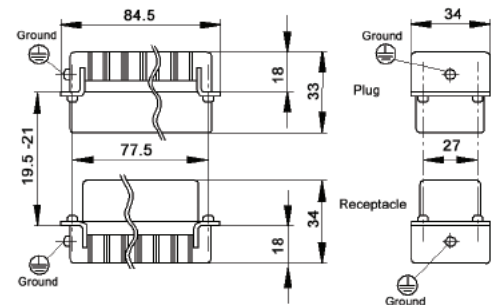
CRIMP TERMINATED



Contacts Sold Separately



All dimensions are in mm.



| Description | Plug | Receptacle |
|--|----------|------------|
| Screw Terminated with wire protection | 10194000 | 10195000 |
| Screw Terminated without wire protection | 10194100 | 10195100 |
| Crimp Terminated: Machine | 10184000 | 10185000 |



MACHINED CONTACTS: DIAMETER 2.5 MM²



| Bags of 100 | | | | | | | |
|-----------------|-----|----------|----------|----------|----------|-----------------------|---------------------|
| mm ² | AWG | Silver | | Gold | | Stripping Length (mm) | # of Marking Tracks |
| | | Pin | Socket | Pin | Socket | | |
| 0.5 | 20 | 11190000 | 11195000 | 11192000 | 11197000 | Pin=7.4, Socket =7.3 | - |
| .75 - 1.0 | 18 | 11190100 | 11195100 | 11192100 | 11197100 | Pin=7.4, Socket =7.3 | 1 |
| 1.5 | 16 | 11190200 | 11195200 | 11192200 | 11197200 | Pin=7.4, Socket =7.3 | 2 |
| 2.5 | 14 | 11190300 | 11195300 | - | - | Pin=7.4, Socket =7.3 | 3 |
| 4.0 | 12 | 11190400 | 11195400 | - | - | Pin=7.4, Socket =7.3 | - |

Part number= 1 contact



Crimp Tool
11147000



Crimp Dies
11147100

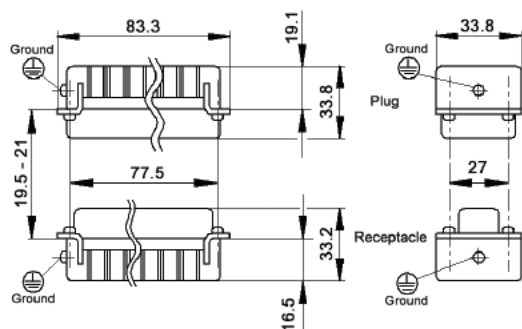


Locator
11147200

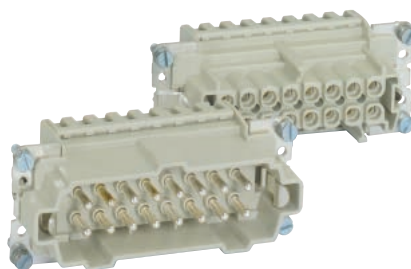
For removal of contacts use a slotted screwdriver.
No special tool is necessary.

Please note that the crimp range for this tool is 0.14 to 4.0 mm² (AWG 26 - 12) with the appropriate crimp dies.

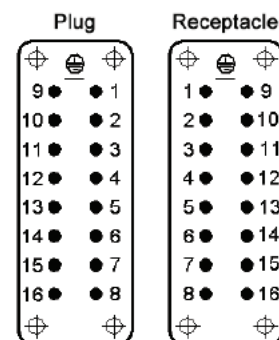
HBE 16 SCREWLESS SPRING CAGE CLAMP INSERTS



All dimensions are in mm.



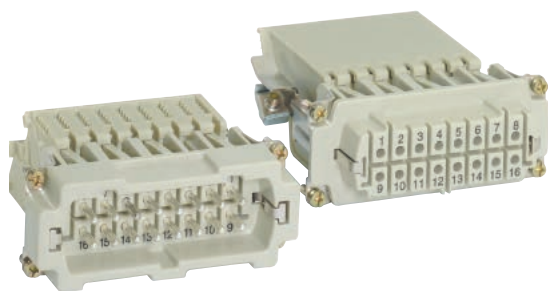
View from Cable Side



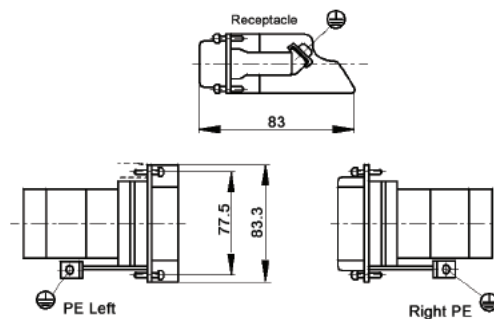
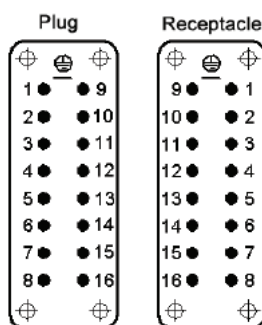
| Description | Plug | Receptacle |
|----------------------|----------|------------|
| Screwless Cage Clamp | 10400200 | 10401200 |



HBE 16 SCREW TERMINATED TERMINAL BLOCK INSERTS



View from Cable Side



All dimensions are in mm.



These terminal block inserts only fit in HBE 16 panel mount bases

One terminal block insert mates with one screw terminated insert.

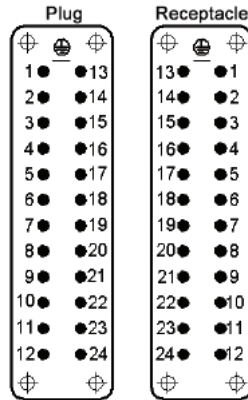
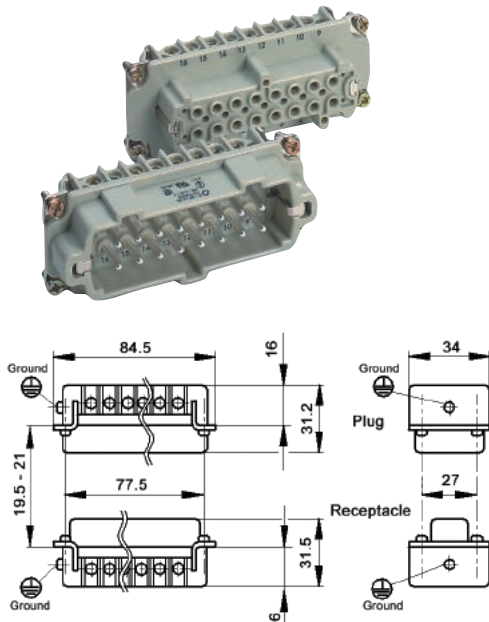
| Description | Receptacle |
|------------------------------|------------|
| Terminal Block: Right Ground | 70315100 |
| Terminal Block: Left Ground | 70314100 |

HBE 24 SCREW & CRIMP TERMINATED INSERTS

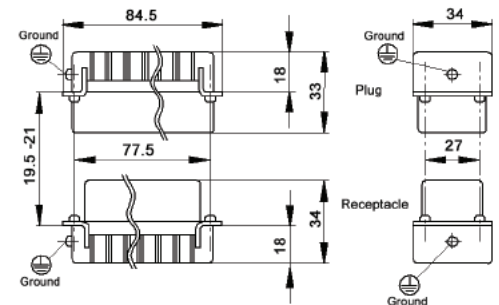
SCREW TERMINATED

View from Cable Side

CRIMP TERMINATED



Contacts Sold Separately



All dimensions are in mm.

| Description | Plug | Receptacle |
|--|----------|------------|
| Screw Terminated with wire protection | 10196000 | 10197000 |
| Screw Terminated without wire protection | 10196100 | 10197100 |
| Crimp Terminated: Machine | 10186000 | 10187000 |



MACHINED CONTACTS: DIAMETER 2.5 MM²



| Bags of 100 | | | | | | | |
|-----------------|-----|----------|----------|----------|----------|-----------------------|---------------------|
| mm ² | AWG | Silver | | Gold | | Stripping Length (mm) | # of Marking Tracks |
| | | Pin | Socket | Pin | Socket | | |
| 0.5 | 20 | 11190000 | 11195000 | 11192000 | 11197000 | Pin=7.4, Socket =7.3 | - |
| .75 - 1.0 | 18 | 11190100 | 11195100 | 11192100 | 11197100 | Pin=7.4, Socket =7.3 | 1 |
| 1.5 | 16 | 11190200 | 11195200 | 11192200 | 11197200 | Pin=7.4, Socket =7.3 | 2 |
| 2.5 | 14 | 11190300 | 11195300 | - | - | Pin=7.4, Socket =7.3 | 3 |
| 4.0 | 12 | 11190400 | 11195400 | - | - | Pin=7.4, Socket =7.3 | - |

Part number= 1 contact



Crimp Tool
11147000



Crimp Dies
11147100

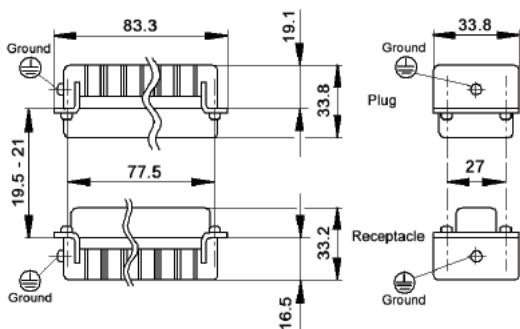


Locator
11147200

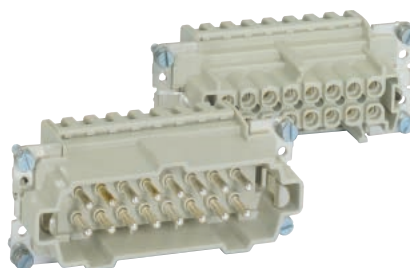
For removal of contacts use a slotted screwdriver.
No special tool is necessary.

Please note that the crimp range for this tool is 0.14 to 4.0 mm² (AWG 26 - 12) with the appropriate crimp dies.

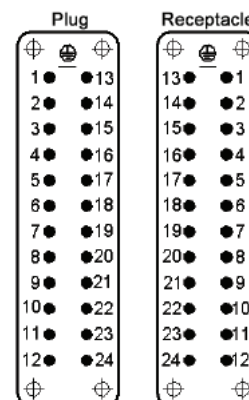
HBE 24 SCREWLESS SPRING CAGE CLAMP INSERTS



All dimensions are in mm.



View from Cable Side

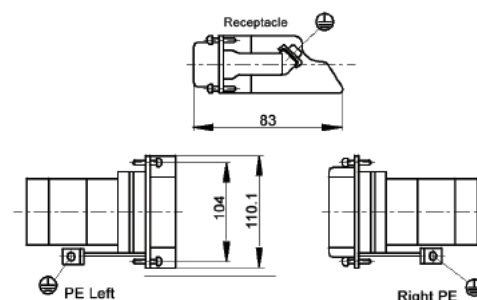
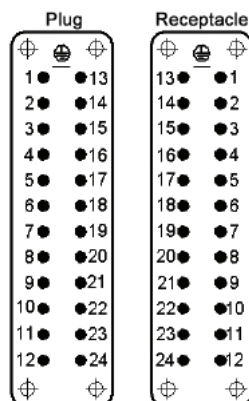
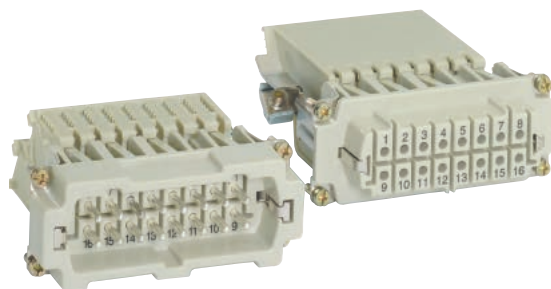


| Description | Plug | Receptacle |
|----------------------|----------|------------|
| Screwless Cage Clamp | 10400300 | 10401300 |



HBE 24 SCREW TERMINATED TERMINAL BLOCK INSERTS

View from Cable Side



All dimensions are in mm.

These terminal block inserts only fit in HBE 24 panel mount bases

| Description | Receptacle |
|------------------------------|------------|
| Terminal Block: Right Ground | 70317100 |
| Terminal Block: Left Ground | 70316100 |

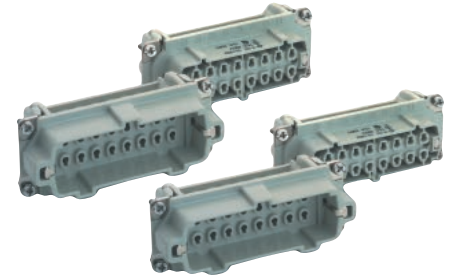
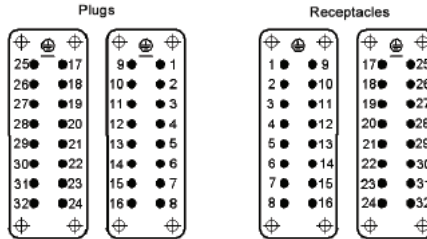
One terminal block insert mates with one screw terminated insert.

HBE 32 SCREW & CRIMP TERMINATED INSERTS

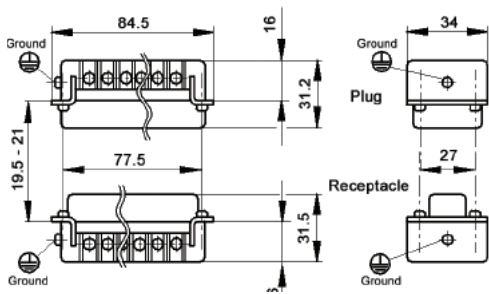
SCREW TERMINATED

View from Cable Side

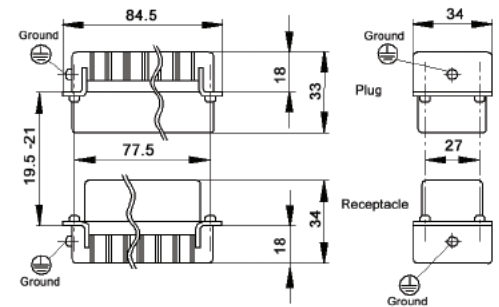
CRIMP TERMINATED



Contacts Sold Separately



All dimensions are in mm.

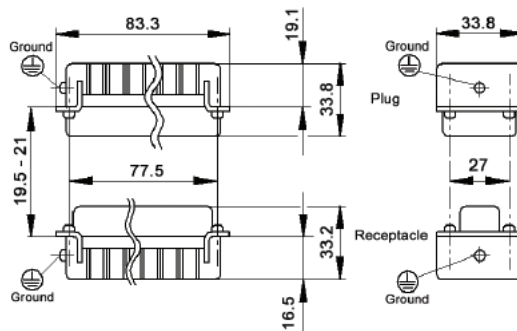
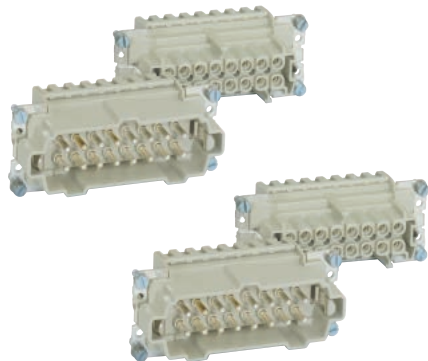


HBE 32
Pg 374

Crimp Contacts
Page 271

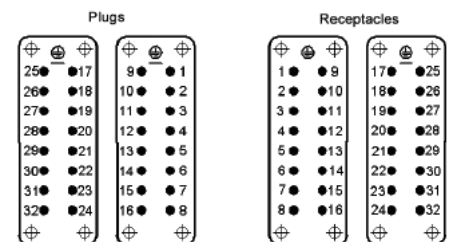
| Description | Plug | Receptacle |
|---|----------|------------|
| Screw Terminated with wire protection (#1-16) | 10194000 | 10195000 |
| Screw Terminated with wire protection (#17-32) | 10202000 | 10203000 |
| Screw Terminated without wire protection (#1-16) | 10194100 | 10195100 |
| Screw Terminated without wire protection (#17-32) | 10202100 | 10203100 |
| Crimp Terminated: Machine (#1-16) | 10184000 | 10185000 |
| Crimp Terminated: Machine (#17-32) | 10184200 | 10185200 |

HBE 32 SCREWLESS SPRING CAGE CLAMP INSERTS



All dimensions are in mm.

View from Cable Side



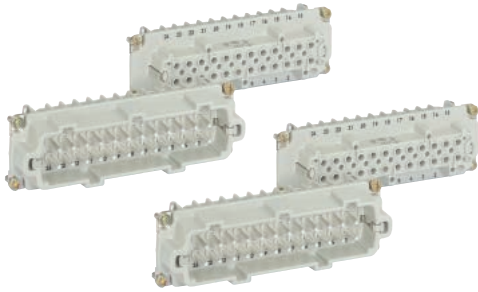
| Description | Plug | Receptacle |
|-------------------------------|----------|------------|
| Screwless Cage Clamp (#1-16) | 10400200 | 10401200 |
| Screwless Cage Clamp (#17-32) | 10400400 | 10401400 |



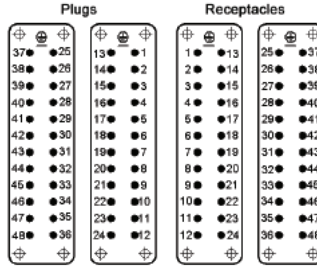
HBE 32
Pg 374

HBE 48 SCREW & CRIMP TERMINATED INSERTS

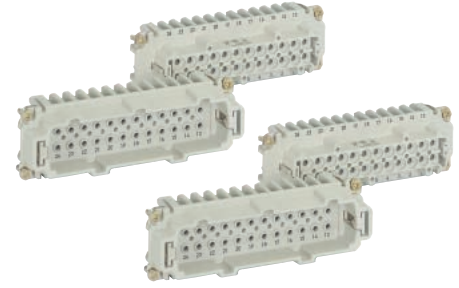
SCREW TERMINATED



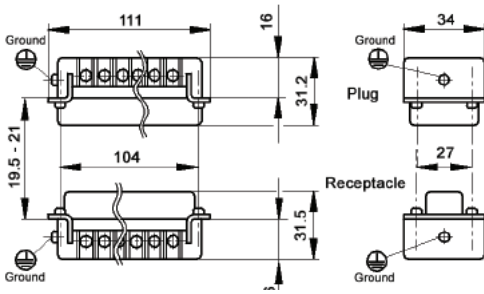
View from Cable Side



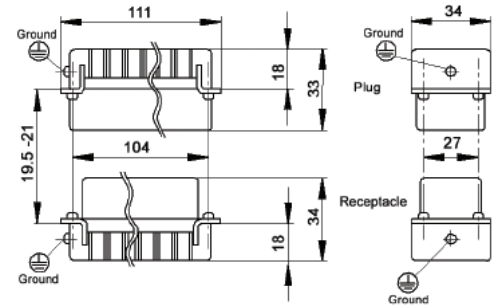
CRIMP TERMINATED



Contacts Sold Separately



All dimensions are in mm.

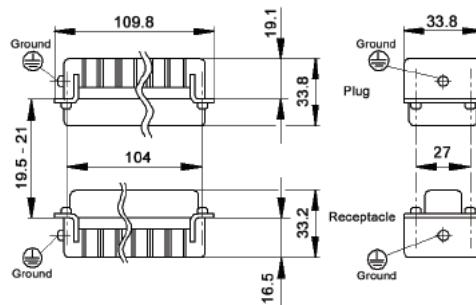
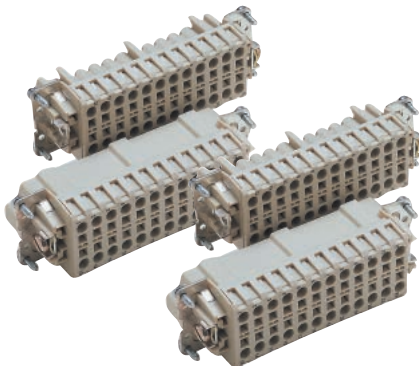


HBE 48
Pg 376

| Description | Plug | Receptacle |
|---|----------|------------|
| Screw Terminated with wire protection (#1-24) | 10196000 | 10197000 |
| Screw Terminated with wire protection (#25-48) | 10204000 | 10205000 |
| Screw Terminated without wire protection (#1-24) | 10196100 | 10197100 |
| Screw Terminated without wire protection (#25-48) | 10204100 | 10205100 |
| Crimp Terminated: Machine (#1-24) | 10186000 | 10187000 |
| Crimp Terminated: Machine (#25-48) | 10186200 | 10187200 |

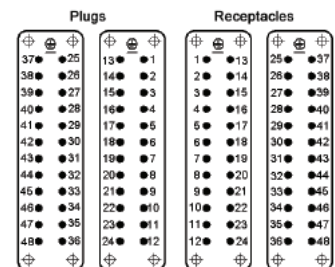
Crimp
Contacts
Page 271

SCREWLESS SPRING CAGE CLAMP INSERTS



All dimensions are in mm.

View from Cable Side



| Description | Plug | Receptacle |
|-------------------------------|----------|------------|
| Screwless Cage Clamp (#1-24) | 10400300 | 10401300 |
| Screwless Cage Clamp (#25-48) | 10400500 | 10401500 |



HBE 48
Pg 376