



AML32FBK4AD



AML32 Series, Solid State Pushbutton, Rectangular, Standard Bezel, Lighted, 1 Neon Lamp, DPST NO Form X , Alternate Action, Snap in panel mount

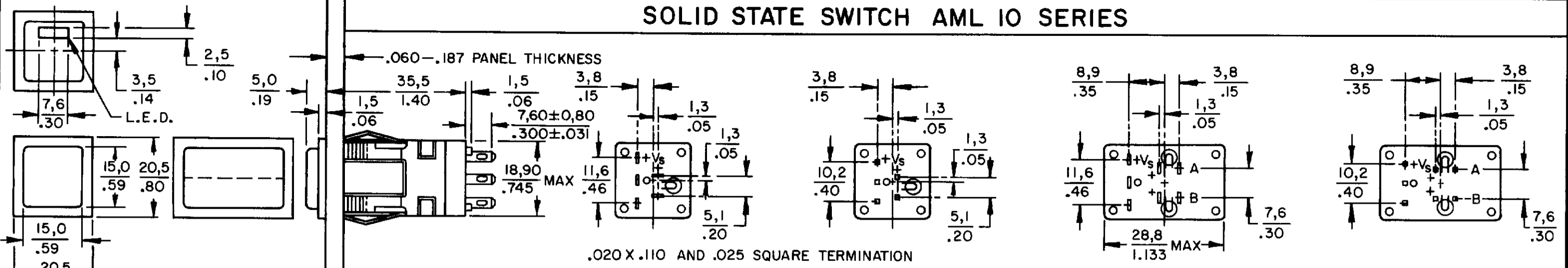
Features

- Snap-in Surface mount
- UL recognized, CSA certified
- Lamp circuit independent of switch circuit
- Metric design for world wide acceptance
- Buttons can be custom legend

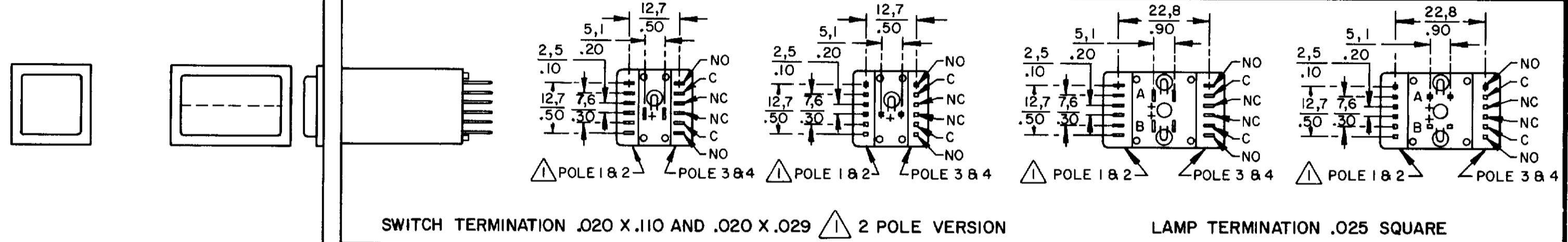
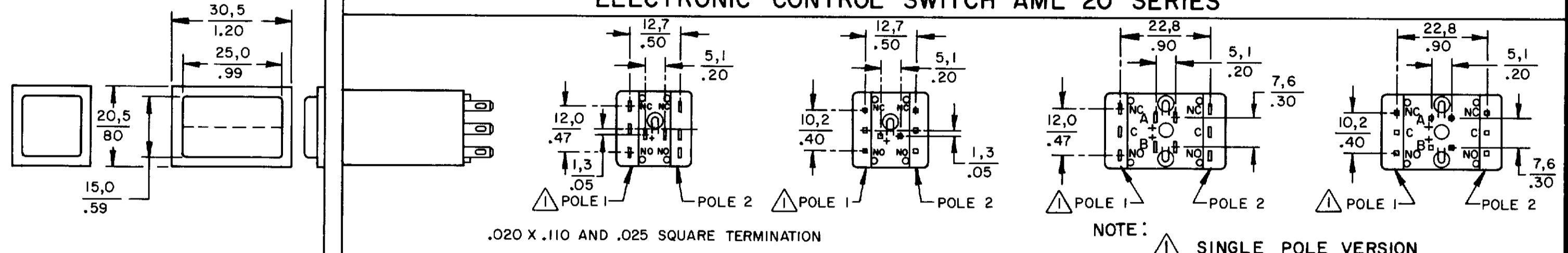
Product Specifications	
Product Type	MICRO SWITCH™ Pushbutton
Housing Type	Rectangular
Circuitry	DPST NO Form X
Action	Alternate action
Mounting	Snap-in Panel
Lamp Type	Lighted, 1 Neon Lamp
Termination	.187 x .020 (Solder or Quick-Connect)
Ampere/Voltage Range (Resistive Load)	0.4-10 A @ 0.5-250 Vac, 0.4-10 A @ 0.5-30 Vdc
LED/Lamp/Neon Voltage	125 Vac
LED/Neon Color	Yellow
Comment	use AML52-N button
Availability	Global
UNSPSC Code	30211913
UNSPSC Commodity	30211913 Push button switches
Series Name	AML32

AML PUSHBUTTON AND INDICATOR SERIES

SOLID STATE SWITCH AML 10 SERIES

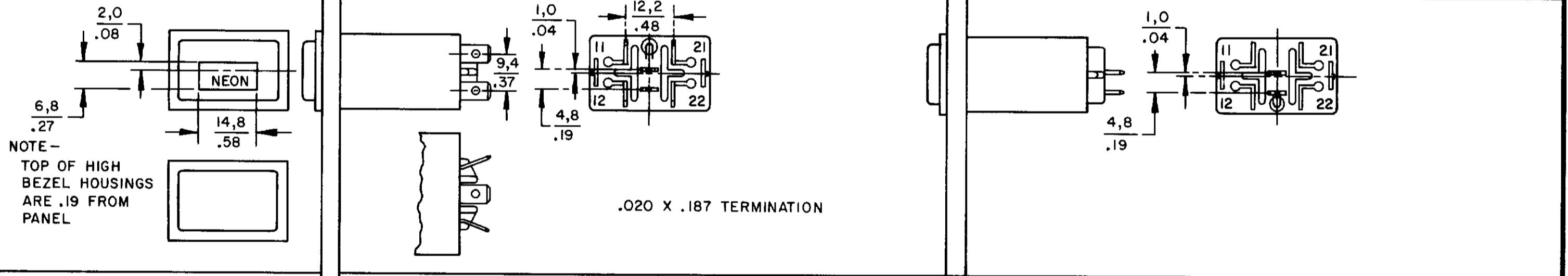


ELECTRONIC CONTROL SWITCH AML 20 SERIES

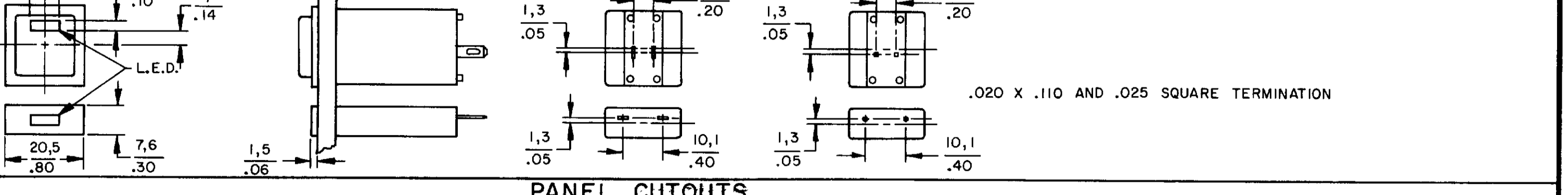
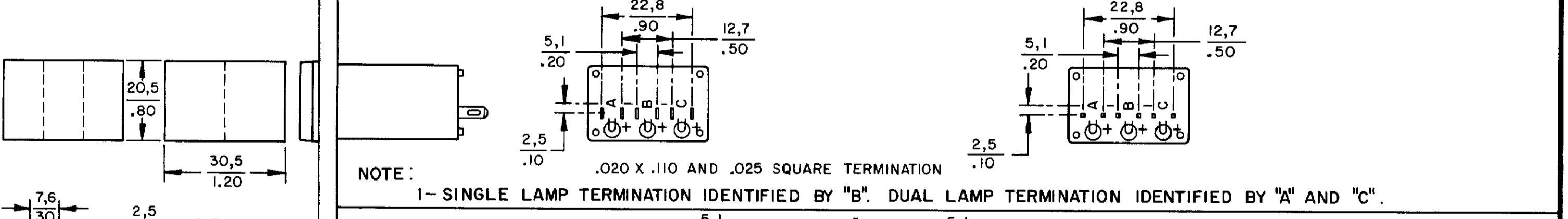
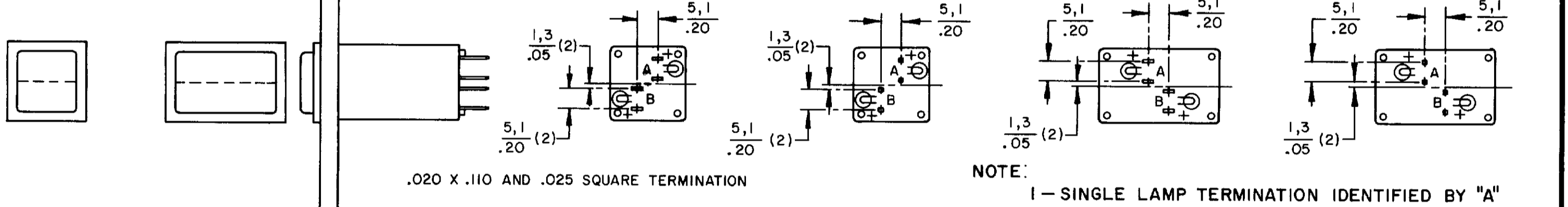


POWER SWITCH AML 30 SERIES

LINE POWER IND AML 43 SERIES



INDICATORS AML 40 SERIES

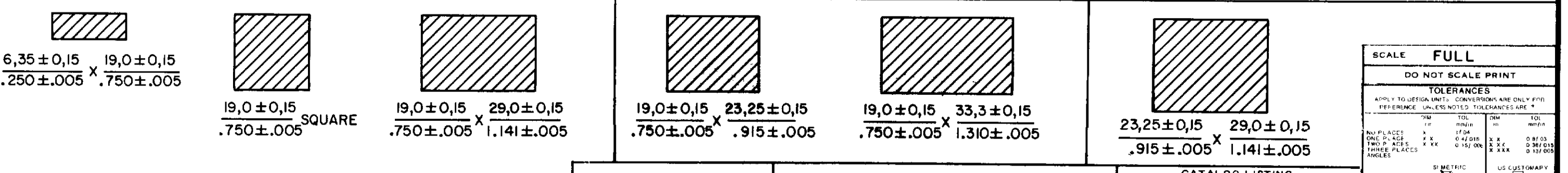


PANEL CUTOUTS

WITHOUT BARRIERS

SHORT BARRIER

LONG BARRIER



SCALE FULL	
DO NOT SCALE PRINT	
TOLERANCES	
APPLY TO DESIGN UNITS. CONVERSIONS ARE ONLY FOR REFERENCE. UNLESS NOTED, TOLERANCES ARE:	
INCHES	FRACTIONS
1/16	± 0.005
1/32	± 0.005
3/32	± 0.005
1/8	± 0.005
5/16	± 0.005
3/8	± 0.005
1/2	± 0.005
MILLIMETERS	± 0.05
± 0.05	± 0.05
± 0.10	± 0.10
± 0.20	± 0.20
± 0.50	± 0.50
± 1.00	± 1.00
± 2.00	± 2.00
± 5.00	± 5.00
± 10.00	± 10.00
± 25.00	± 25.00
± 50.00	± 50.00
± 100.00	± 100.00
± 250.00	± 250.00
± 500.00	± 500.00
± 1000.00	± 1000.00
NO PLACES	± 0.005
ONE PLACE	± 0.005
TWO PLACES	± 0.005
THREE PLACES	± 0.005
FOUR PLACES	± 0.005
DESIGN UNITS	DI METRIC
<input checked="" type="checkbox"/>	<input type="checkbox"/>
DESIGN UNITS	US CUSTOMARY
<input type="checkbox"/>	<input type="checkbox"/>
THIRD ANGLE PROJECTION	
WEIGHT	

CATALOG LISTING AML 10 20 30 40
 PAGE 1 OF 1 SERIES CHART 1
 RELEASE NO CO-78498 REPLACES & 40 SERIES
 ISSUE 6
 REVISIONS
 A 209297
 B 201477
 C 201566
 D 201696
 E 202971
 30 APR 01
 DRAWN JAK
 CHECK JAF 11 JUL 04
 17 JUN 94
 RASTER