



201LS1



Actual product appearance may vary.

Enclosed Switches Series LS: Side Rotary with 1.5" Fixed Length Lever; Steel Roller; 1NC 1NO DPDT Snap Action, Double Break; 0.5 in - 14NPT conduit; Plug-in

Features

- Mode of operation is field adjustable
- NEMA 1, 3, 4, 6, and 13
- Wide choice of heads and actuators
- Variety of operating characteristics
- Captive screws
- UL and CSA approved parts available

Potential Applications

- Machine tools
- Conveyors
- Material handling
- Metal fabrication equipment
- Lift trucks

Description

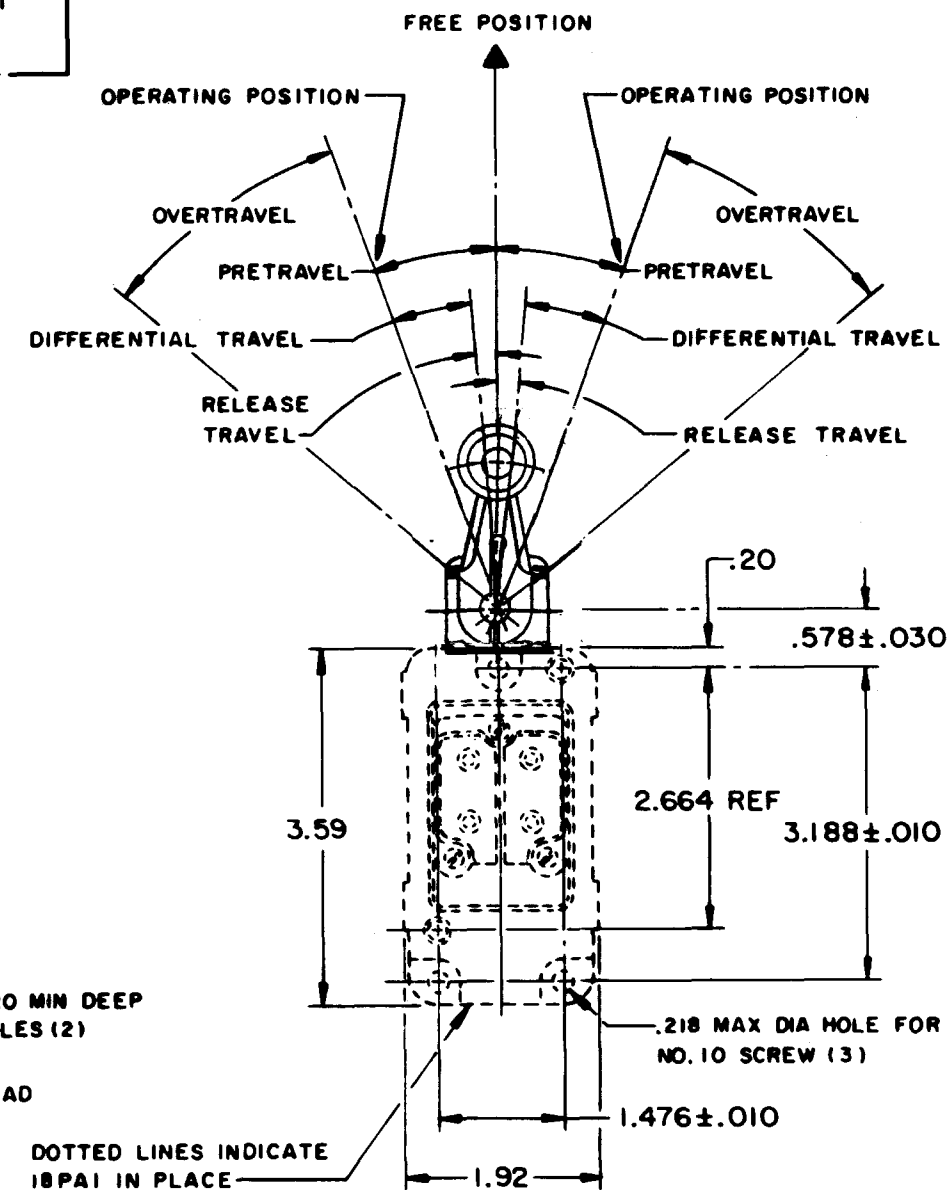
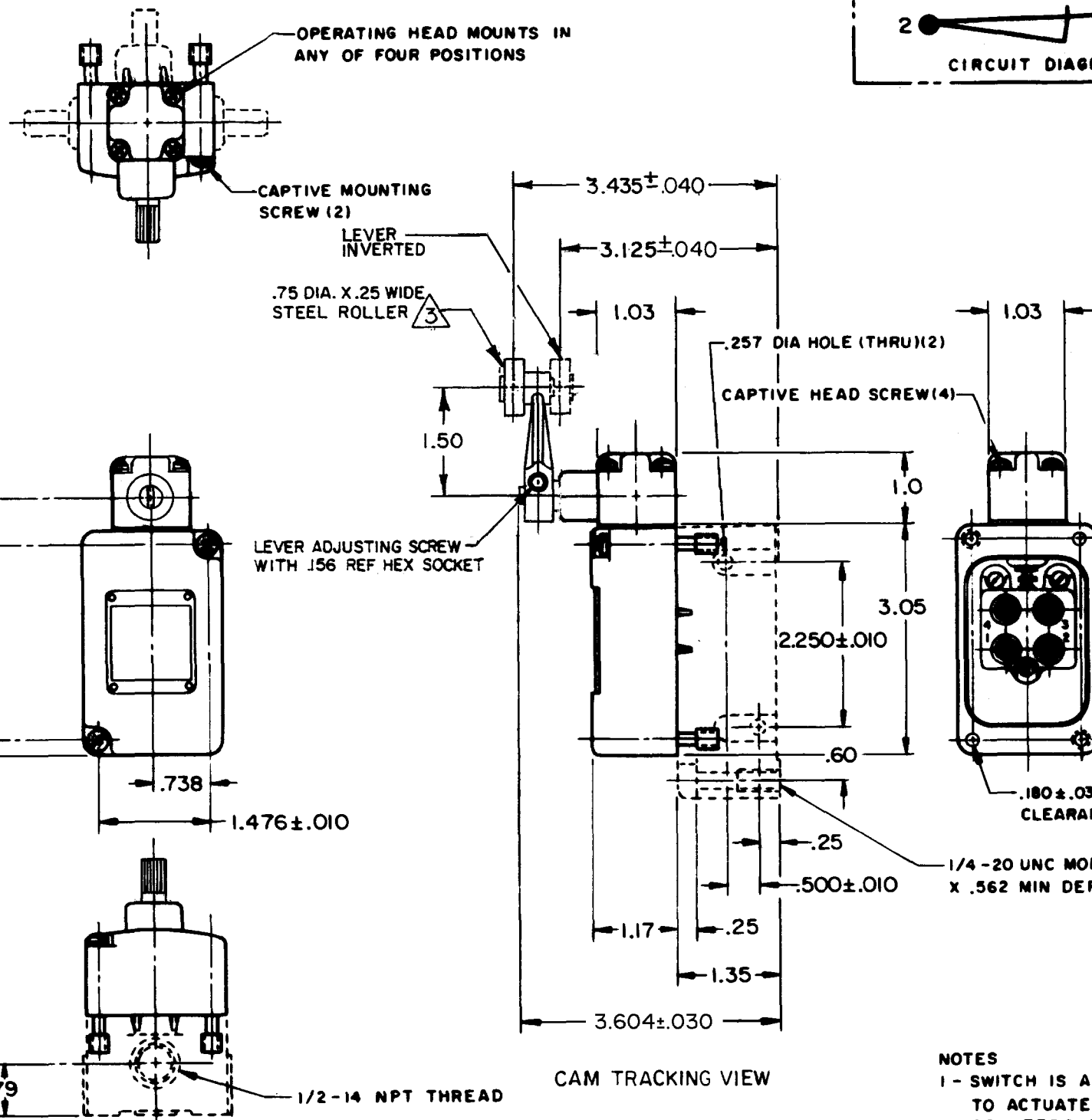
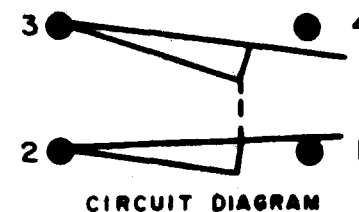
MICRO SWITCH™ compact LS and plug-in 200LS limit switches have a long record of successful performance in industrial applications. The MICRO SWITCH™ LS fits in many places too small for any other fully adjustable limit switch. The MICRO SWITCH™ 200LS switches are the original plug-in concept for reducing downtime by making changeover simple and fast.

Product Specifications	
Availability	Global
Operating Force (O.F.)	0.51 N m max. [4.5 in lb max.]
Full Overtravel Force	8.13 N m max. [6 in lb max.]
Release Force (R.F.)	0.08 N m min. [0.75 in lb min.]
Pretravel (P.T.)	20° max.
Overtravel (O.T.)	30° min.
Differential Travel (D.T.)	12° max.
Product Type	MICRO SWITCH™ Compact Limit Switches
Actuator	Side Rotary
Lever Style	1.5 in Fixed Length Lever with front mounted Steel Roller (.75 in dia. x .25 in wide)

Circuitry	1NC 1NO SPDT Snap Action, Double-Break
Ampere Rating	10 A Ind./0.8 A Res./0.4 Res./0.1 A Res.
Supply Voltage	120 Vac. 240 Vac. 480 Vac/115 Vdc/230 Vdc/550 Vdc
Housing Material	Zinc Die-Cast
Termination Type	0.5 in - 14NPT conduit
Housing Type	Plug-In
Series Name	LS
Sealing	NEMA 1, 3, 4, 6, 13
Operating Temperature Range	-29 °C to 71 °C [-20 °F to 160 °F]
Comment	18PA1 terminal block required which must be ordered separately
UNSPSC Code	302119
UNSPSC Commodity	302119 Switches and controls and relays
Sealed	Industrial

SWITCH - ENCLOSED

CATALOG LISTING
201LS1



NOTES

- SWITCH IS ASSEMBLED FOR ACTUATION IN BOTH DIRECTIONS BUT MAY BE ADJUSTED TO ACTUATE IN EITHER THE CLOCKWISE DIRECTION ONLY OR THE COUNTERCLOCKWISE DIRECTION ONLY
- TO CONVERT SWITCH FOR ACTUATION IN EITHER THE CLOCKWISE OR COUNTERCLOCKWISE DIRECTION ONLY, REMOVE ACTUATOR HEAD AND ROTATE THE NOTCHED PLUNGER 90° TO THE RIGHT FOR CLOCKWISE ACTUATION OR 90° TO THE LEFT FOR COUNTERCLOCKWISE ACTUATION
- ROLLER LEVER MAY BE LOCKED IN ANY POSITION THRU 360°
- LEVER FURNISHED UNASSEMBLED IN UNIT PACKING BOX

THIS DRAWING COVERS A PROPRIETARY ITEM AND IS THE PROPERTY OF MICRO SWITCH, A DIVISION OF MINNEAPOLIS-HONEYWELL REGULATOR CO. THIS DRAWING IS NOT TO BE COPIED OR USED WITHOUT THE APPROVAL OF MICRO SWITCH.

CHARACTERISTICS	ELECTRICAL DATA	SCALE 1/2 TO 1
OPERATING TORQUE --- -4.5 IN-LB MAX	CONTACT ARRANGEMENT (SEE CIRCUIT DIAGRAM)	DO NOT SCALE PRINT
FULL OVERTRAVEL TORQUE --- -6 IN-LB MAX	10A-120, 240, OR 480 VAC; 1/3 HP - 120 VAC	UNLESS OTHERWISE NOTED
RELEASE TORQUE --- -.75 IN-LB MIN	3/4 HP - 240 VAC; 0.8A - 115 VDC; 0.4A - 230 VDC	DIMENSIONS ARE IN INCHES
PRETRAVEL --- -20° MAX	.1A - 550 VDC	TOLERANCES ARE:
DIFFERENTIAL TRAVEL --- -12° MAX	PILOT DUTY: 600 VAC MAX	ONE PLACE (.01) ± .030
OVERTRAVEL --- -30° MIN		TWO PLACE (.001) ± .015
RELEASE TRAVEL --- -4° MIN		THREE PLACE (.000) ± .008
SWITCH-BASIC REPLACEMENT --- -2 MNG		ANGLES ±
		WEIGHT

CATALOG LISTING 201LS1 PAGE 1 OF 1
 DRAWING NUMBER M
 ISSUE 15
 REVISIONS
 A CO-95463-B 6 L T 7 SEP 99
 B ECO-200178 5 APR 00
 CHECK
 19 MAR 64
 DRAWN
 FORMTEK
 FO-80378-003
 O M W
 19 MAR 64
 CHECK
 28 MAR 64
 CHECK
 RELEASE NO.