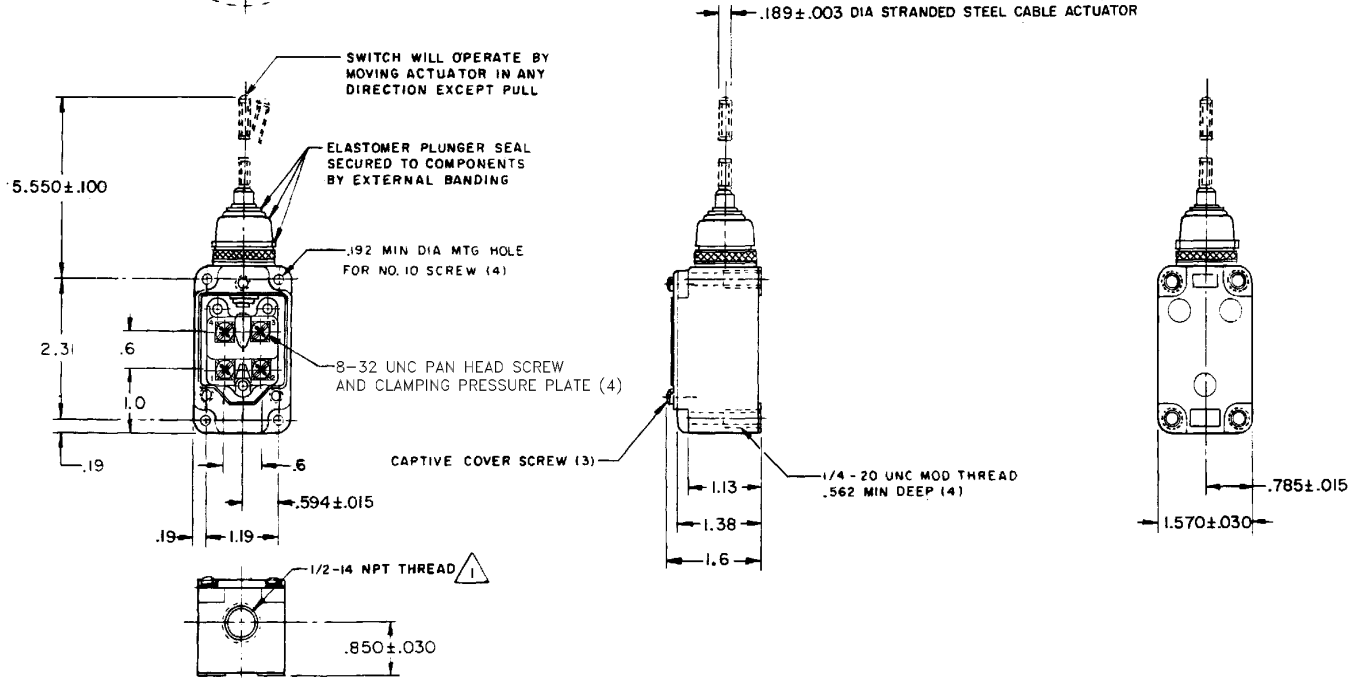
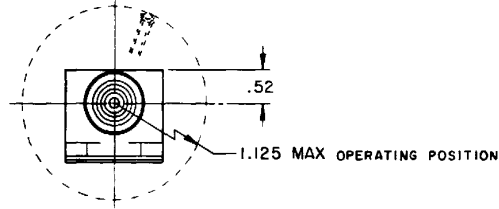
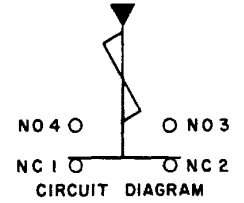


MICRO SWITCH
a Honeywell Division
FED. MFG. CODE 91929

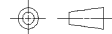
SWITCH-ENCLOSED

CATALOG LISTING
8LS1-L



THIS DRAWING COVERS A PROPRIETARY ITEM AND IS THE PROPERTY OF MICRO SWITCH, A DIVISION OF HONEYWELL. THIS DRAWING IS NOT TO BE COPIED OR USED WITHOUT THE APPROVAL OF MICRO SWITCH

THIRD ANGLE PROJECTION



SCALE	1/2 TO 1
DO NOT SCALE PRINT	
UNLESS OTHERWISE SPECIFIED TOLERANCES ARE	
ONE PLACE	(.0) ± .030
TWO PLACE	(.00) ± .015
THREE PLACE	(.000) ± .005
ANGLES	±
WEIGHT	

CHARACTERISTICS	ELECTRICAL DATA
OPERATING FORCE ----- 5 OZ MAX	CONTACT ARRANGEMENT (SEE CIRCUIT DIAGRAM)
FORCE AT 2.0 ----- 10 OZ MAX	L128 10A 125, 250 OR 480 VAC 1/4HP 125 VAC, 1/2HP 250 VAC 0.8A 125 VDC, 0.4A 250 VDC
SWITCH-BASIC REPLACEMENT ----- 2MNII-L	



NOTE

⚠ SEAL FURNISHED BY USER

CATALOG LISTING 8LS1-L
 ISSUE 13
 REVISIONS
 A CO-76897
 13 APR 95
 B C094494
 JAF
 22 MAR 99
 CHECK
 8 MAY 95
 JAF
 CHECK
 13 APR 95
 GJW
 DRAWN
 FORMTEK

REPLACES
 RELEASE NO. SR-13000
 PAGE 1 OF 1