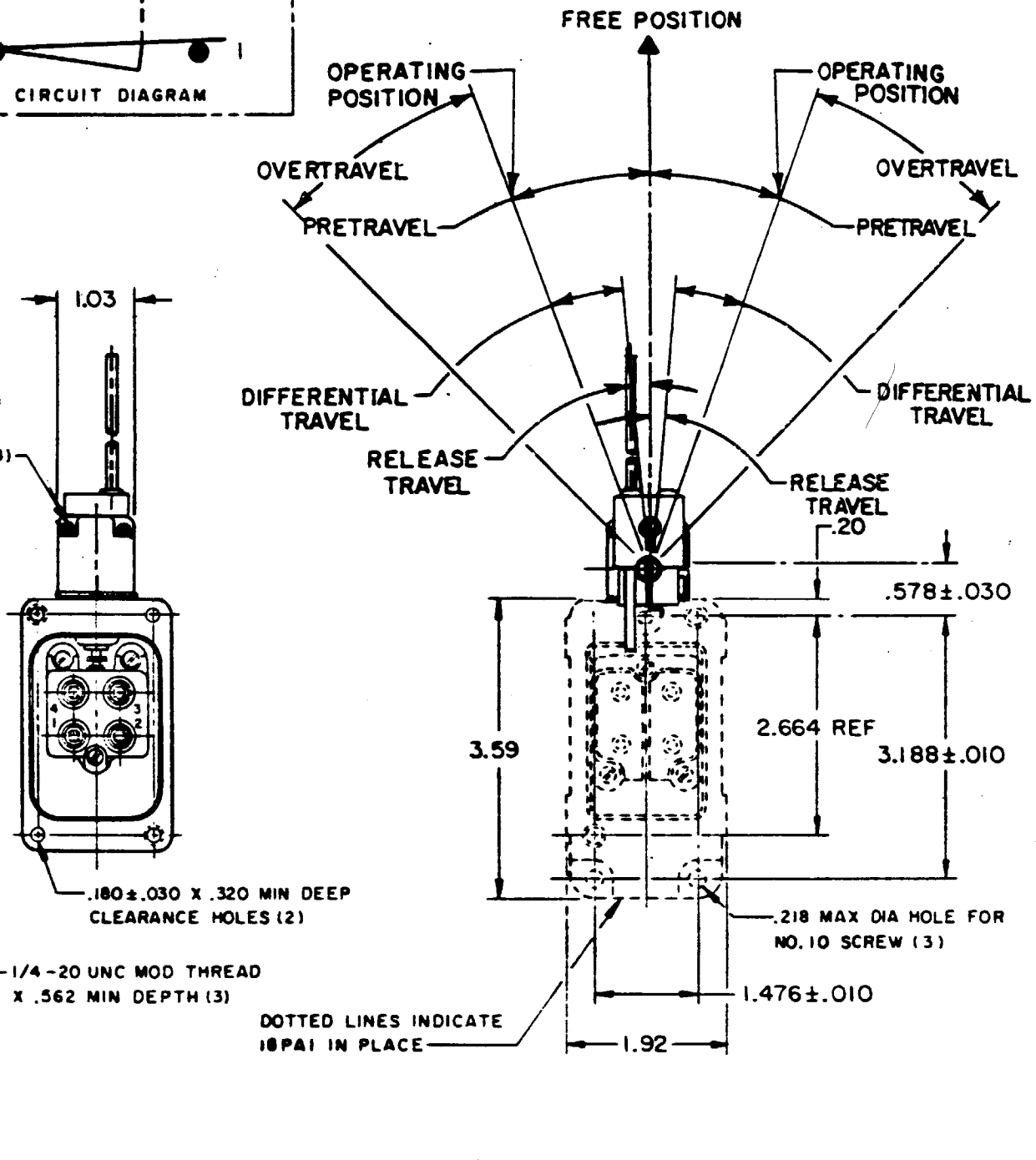
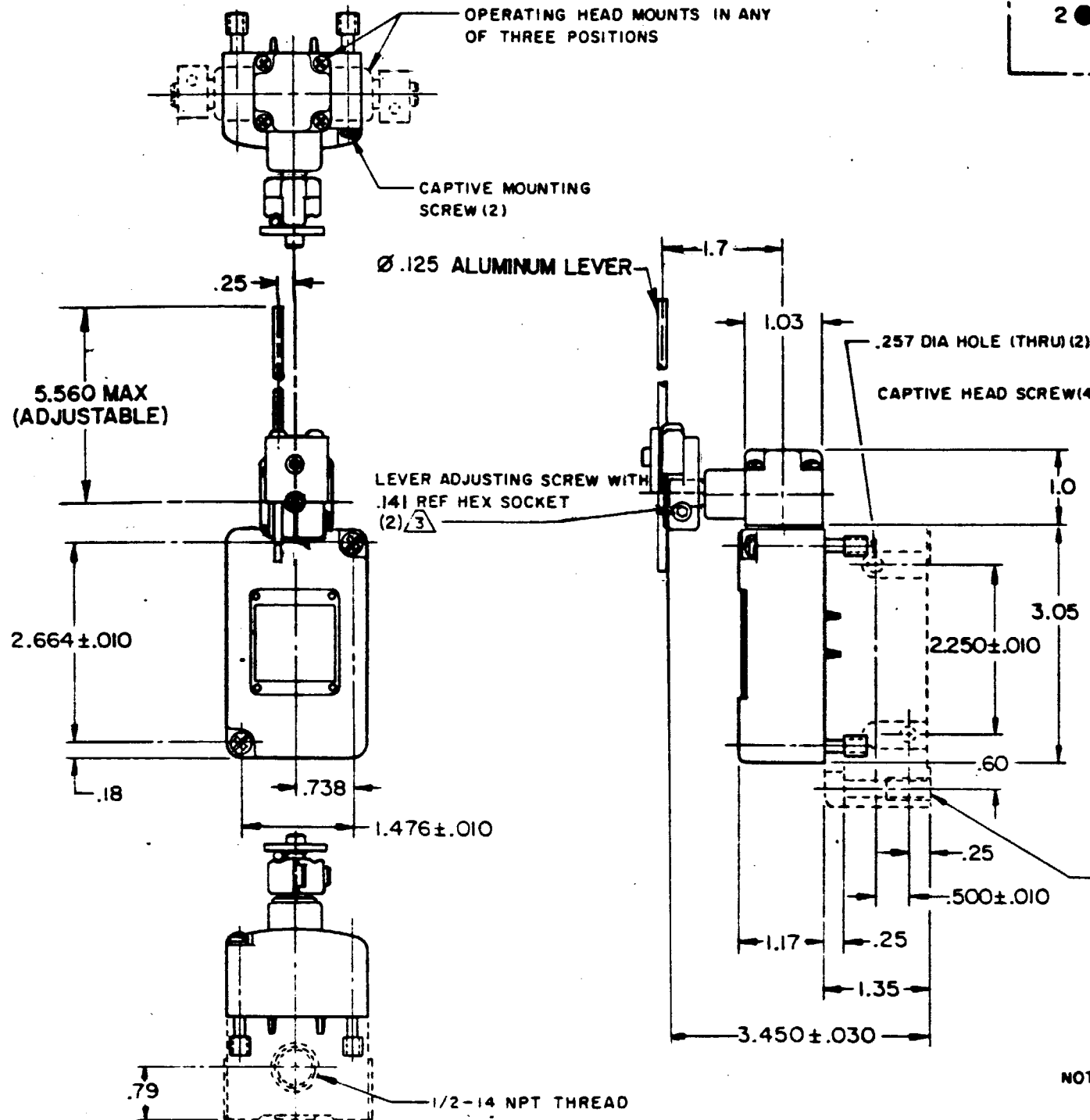


M

REVISIONS
 A CD18785
 R J W
 11 JUNE 64
 B C025152
 M B S
 24 APR 69
 C CO
 30498-B
 6 L H
 7 SEP 73
 D C048804
 G J W
 30 DEC 80
 E CO
 77031
 J D B
 22 DEC 93
 DRAWN
 R J W 11 JUNE 64
 CHECK
 P A W 26 JUNE 64
 CHECK
 P A W 26 JUNE 64
 DRAWING NUMBER
M 201LS10
 REPLACES
M 201LS10



NOTE -
 1 - SWITCH IS ASSEMBLED FOR ACTUATION IN BOTH DIRECTIONS BUT MAY BE ADJUSTED TO ACTUATE IN EITHER THE CLOCKWISE DIRECTION ONLY OR THE COUNTERCLOCKWISE DIRECTION ONLY
 2 - TO CONVERT SWITCH FOR ACTUATION IN EITHER THE CLOCKWISE OR COUNTERCLOCKWISE DIRECTION ONLY, REMOVE ACTUATOR HEAD AND ROTATE THE NOTCHED PLUNGER 90° TO THE RIGHT FOR CLOCKWISE ACTUATION OR 90° TO THE LEFT FOR COUNTERCLOCKWISE ACTUATION
 3 - LEVER MAY BE LOCKED IN ANY POSITION THRU 360°
 4 - LEVER FURNISHED UNASSEMBLED IN UNIT PACKING BOX

THIS DRAWING COVERS A PROPRIETARY ITEM AND IS THE PROPERTY OF MICRO SWITCH, A DIVISION OF MINNEAPOLIS-HONEYWELL REGULATOR CO. THIS DRAWING IS NOT TO BE COPIED OR USED WITHOUT THE APPROVAL OF MICRO SWITCH.

CHARACTERISTICS	
OPERATING TORQUE	1.7 IN-LB MAX
FULL OVERTRAVEL TORQUE	2.4 IN-LB MAX
RELEASE TORQUE	.35 IN-LB MIN
PRETRAVEL	20° MAX
DIFFERENTIAL TRAVEL	12° MAX
OVERTRAVEL	30° MIN
RELEASE TRAVEL	5° MIN
SWITCH - BASIC REPLACEMENT	2MN6

ELECTRICAL DATA	
CONTACT ARRANGEMENT (SEE CIRCUIT DIAGRAM)	
10A - 120, 240, OR 480 VAC, 1/3 HP - 120 VAC 3/4 HP - 240 VAC; 0.8A - 115 VDC; 0.4A - 230 VDC 1A - 550 VDC PILOT DUTY: 600 VAC MAX	

SCALE 1/2 TO 1	
DO NOT SCALE PRINT	
UNLESS OTHERWISE NOTED DIMENSIONS ARE IN INCHES	
TOLERANCES ARE:	
ONE PLACE (.01)	±.030
TWO PLACE (.00)	±.015
THREE PLACE (.000)	±.008
ANGLES	±
WEIGHT	