



### 1LS47



*Actual product appearance may vary.*

**Enclosed Switches Series LS: Rod - Adjustable; 1NC 1NO DPDT Snap Action, Double Break; 0.5 in - 14NPT conduit; Compact/Non-Plug-in**

#### Features

- Mode of operation is field adjustable
- NEMA 1, 3, 4, 6, and 13
- Wide choice of heads and actuators
- Variety of operating characteristics
- Captive screws
- UL and CSA approved parts available

#### Potential Applications

- Machine tools
- Conveyors
- Material handling
- Metal fabrication equipment
- Lift trucks

#### Description

MICRO SWITCH™ compact LS and plug-in 200LS limit switches have a long record of successful performance in industrial applications. The MICRO SWITCH™ LS fits in many places too small for any other fully adjustable limit switch. The MICRO SWITCH™ 200LS switches are the original plug-in concept for reducing downtime by making changeover simple and fast.

Product Specifications	
Availability	Global
Operating Force (O.F.)	0.19 N m max. [1.7 in lb max.]
Full Overtravel Force	0.25 N m max. [2.25 in lb max.]
Release Force (R.F.)	0.04 N m min. [0.35 in lb min.]
Pretravel (P.T.)	5° max.
Overtravel (O.T.)	30° min.
Product Type	MICRO SWITCH™ Compact Limit Switches
Actuator	Side Rotary
Lever Style	Rod - Adjustable
Circuitry	1NC 1NO SPDT Snap Action, Double-Break
Ampere Rating	10 A Ind.

Supply Voltage	120 Vac. 240 Vac. 480 Vac
Housing Material	Zinc Die-Cast
Termination Type	0.5 in - 14NPT conduit
Housing Type	Compact / Non Plug-In
Series Name	LS
Sealing	NEMA 1, 3, 4, 6, 13
Operating Temperature Range	-29 °C to 71 °C [-20 °F to 160 °F]
Comment	5" (127mm) aluminum rod actuator
UNSPSC Code	302119
UNSPSC Commodity	302119 Switches and controls and relays
Sealed	Industrial

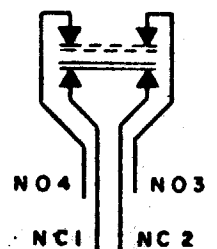
**MICRO SWITCH**

FREERPORT, ILLINOIS, U.S.A.  
A DIVISION OF HONEYWELL

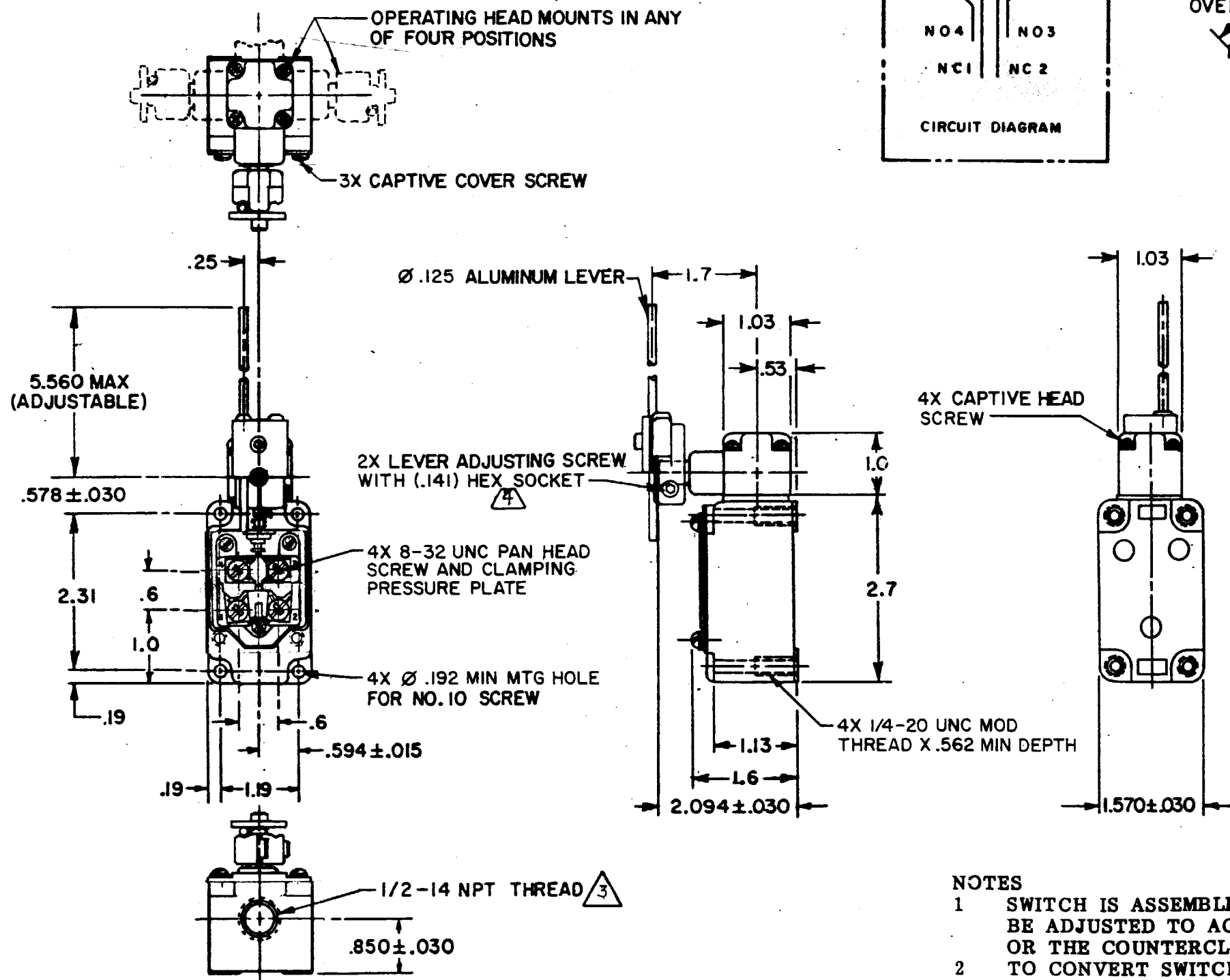
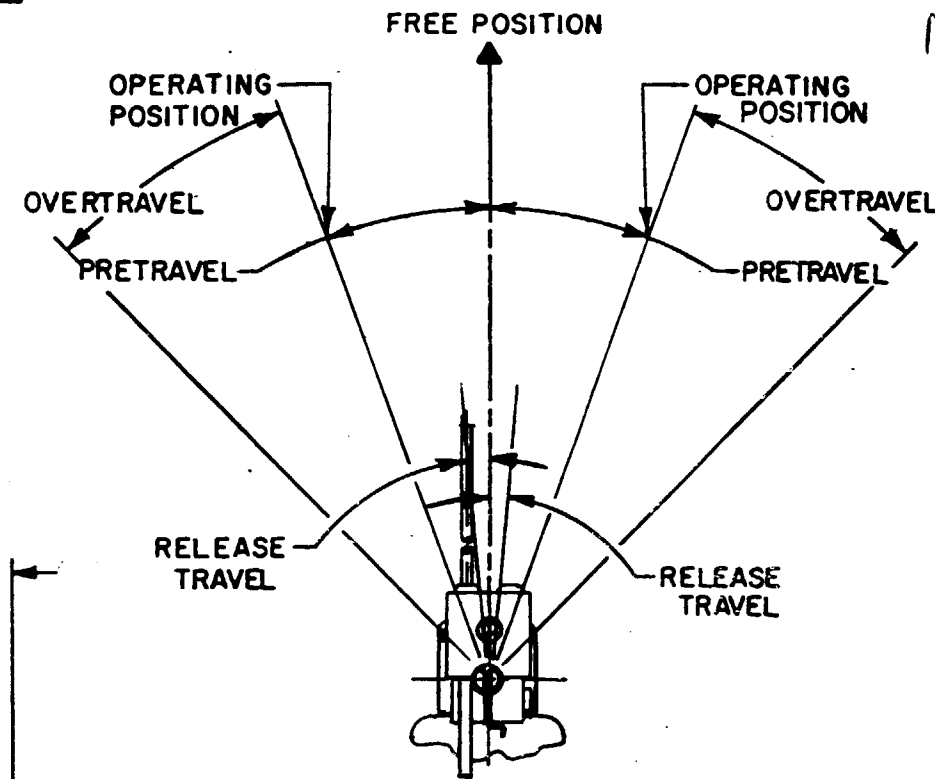
FED. MFG. CODE 91929

**SWITCH-ENCLOSED**

CATALOG LISTING  
**1LS47**



CIRCUIT DIAGRAM



**NOTES**

- SWITCH IS ASSEMBLED FOR ACTUATION IN BOTH DIRECTIONS BUT MAY BE ADJUSTED TO ACTUATE IN EITHER THE CLOCKWISE DIRECTION ONLY OR THE COUNTERCLOCKWISE DIRECTION ONLY
- TO CONVERT SWITCH FOR ACTUATION IN EITHER THE CLOCKWISE OR COUNTERCLOCKWISE DIRECTION ONLY, REMOVE ACTUATOR HEAD AND ROTATE THE NOTCHED PLUNGER 90° TO THE RIGHT FOR CLOCKWISE ACTUATION OR 90° TO THE LEFT FOR COUNTERCLOCKWISE ACTUATION

3

SEAL TO BE FURNISHED BY USER

4

LEVER MAY BE LOCKED IN ANY POSITION THRU 360°

5

LEVER FURNISHED UNASSEMBLED IN UNIT PACKING BOX

THIS DRAWING COVERS A PROPRIETARY ITEM AND IS THE PROPERTY OF MICRO SWITCH, A DIVISION OF MINNEAPOLIS-HONEYWELL REGULATOR CO. THIS DRAWING IS NOT TO BE COPIED OR USED WITHOUT THE APPROVAL OF MICRO SWITCH.

CHARACTERISTICS	ELECTRICAL DATA	SCALE 1/2 TO 1
OPERATING TORQUE ----- 1.7 IN-LB MAX	CONTACT ARRANGEMENT (SEE CIRCUIT DIAGRAM)	DO NOT SCALE PRINT
FULL OVERTRAVEL TORQUE ----- 2.4 IN-LB MAX		UNLESS OTHERWISE NOTED
RELEASE TORQUE ----- .35 IN-LB MIN	10A - 120, 240 OR 480 VAC	DIMENSIONS ARE IN INCHES
PRETRAVEL ----- 5° MAX	1/4 HP - 120 VAC; 1/2 HP - 240 VAC	<b>TOLERANCES ARE:</b>
	PILOT DUTY: 600 VAC MAX	ONE PLACE (.01) ±.030
OVERTRAVEL ----- 30° MIN		TWO PLACE (.001) ±.015
RELEASE TRAVEL ----- 0°30' MIN		THREE PLACE (.000) ±.005
SWITCH-BASIC REPLACEMENT ----- 2MN8		ANGLES ±
		WEIGHT

ANSI Y14.5M-1982 APPLIES

1LS47

M

14

REVISIONS

A CO-77031 JDB 22 DEC 93

24 JAN 94

06 JAN 94

FO-92891-A

DRAWN

J D B

REPLACES

RELEASE NO.

CHECK

CHECK

CHECK