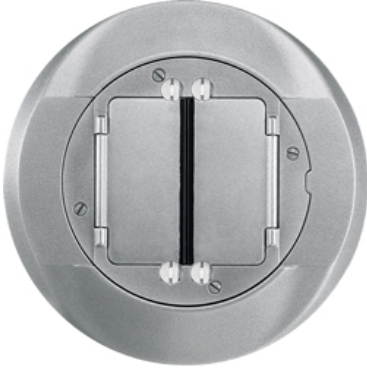


Product Datasheet

[Catalog Home](#)
[Home Page](#)
[Search](#)

## S1CFCBL -- SystemOne Universal Cover for Carpet Assembly, Black Finish



Hubbell SystemOne is an innovative system that provides consumers with the flexibility to create personal solutions for the most demanding multi-service applications for both flush in-floor boxes and fire-rated poke-throughs. Hubbell SystemOne features a unique universal cover assembly and a wide variety of application sub-plates that install on both Hubbell flush floor boxes and fire-rated poke-throughs. Whatever the application, Hubbell SystemOne delivers a consistent, aesthetic and functional solution for applications “in-the-floor” or “through-the-floor” for power, voice, data, and A/V requirements.

### Product Specifications

<b>Product Type</b>	SystemOne Universal Covers
<b>Universal Cover Format</b>	Carpet
<b>Finish/Color</b>	Black
<b>Accessory For Use With</b>	SystemOne Components
<b>Unit Package</b>	Single
<b>Order Quantity</b>	Carton of 1
<b>UPC Number</b>	78358537106
<b>Weight in LBs</b>	1.2
<b>Link to Drawing Library</b>	<a href="#">Click here for Library</a>
<b>Link to PDF Catalog</b>	<a href="#">Click here for Catalog</a>

### SystemOne Features

- Oversized hinged doors rotate 180° flush with carpet flange or tile.
- Carpet flange features raised hinged door supports.
- Over-molded access doors prevent dirt, and debris from entering power and communication compartments.
- Security screws allow each door to be opened and secured independently.

