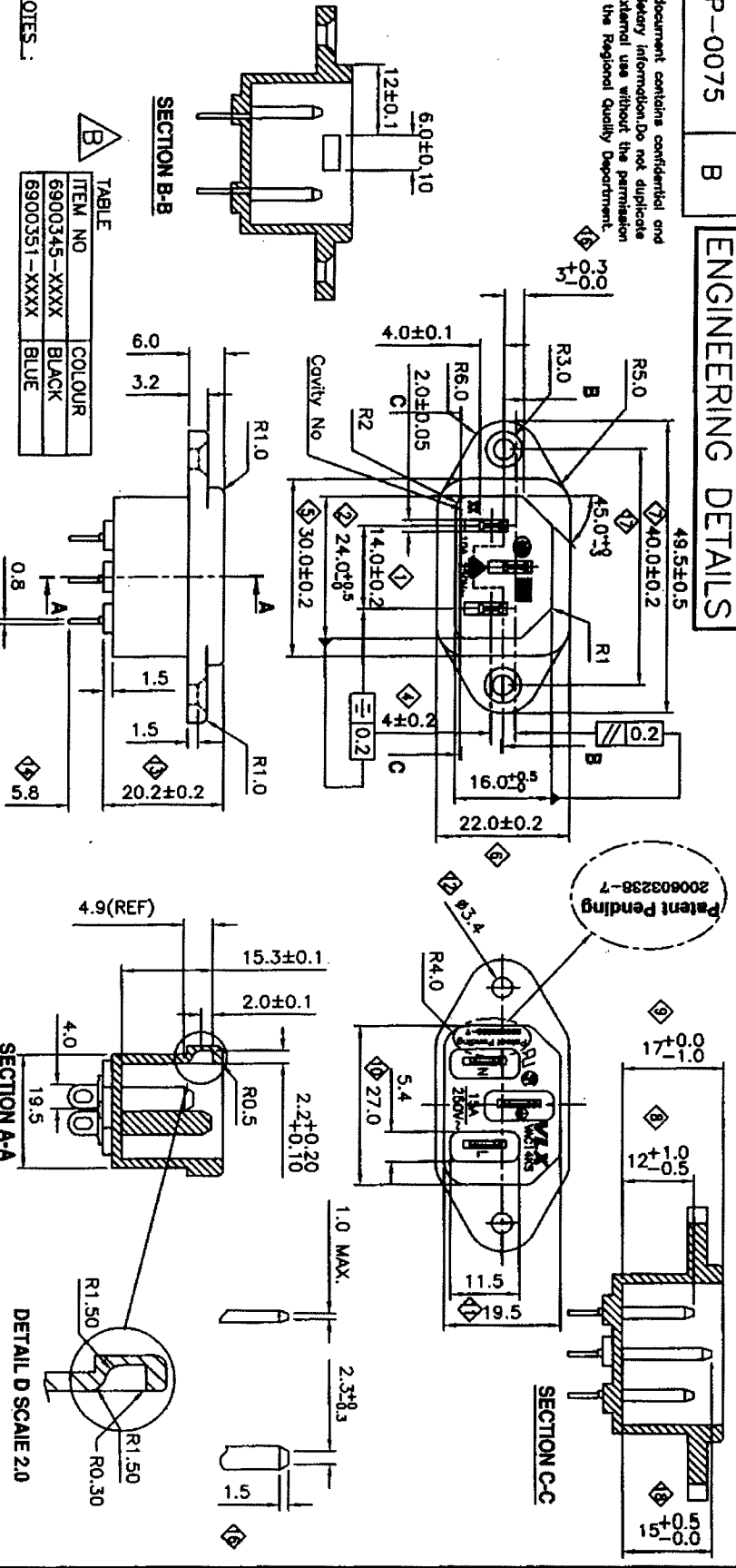


DRAWING NUMBER : **MP-0075** REVISION : **B**

ENGINEERING DETAILS

This document contains confidential and proprietary information. Do not duplicate for external use without the permission from the Regional Quality Department.



NOTES :

1. ALL DIMENSION IN MM.
2. GENERAL TOLERANCE, UNLESS OTHERWISE SPECIFIED :
 LINEAR : X.X = ±0.2
 : X.XX = ±0.15
 : X.XXX = ±0.050
 ANGULAR : X.X = ±0.5°
 : X.XX = ±0.5°
3. CRITICAL DIMENSIONS, WHERE Y IS IN ALPHABETICAL ORDER.
4. CPK POINTS, WHERE Z IS IN NUMERICAL DIGITS.
5. RFD POINTS.
6. MAX. 0.20MM ALLOWABLE PLASTIC FLASH ALL ROUND.
7. MAX. 0.05MM ALLOWABLE METALLIC BURR ALL ROUND.

TABLE

ITEM NO	COLOUR
6900345-XXXX	BLACK
6900351-XXXX	BLUE

MATERIAL SPECIFICATION (CONTACTS)

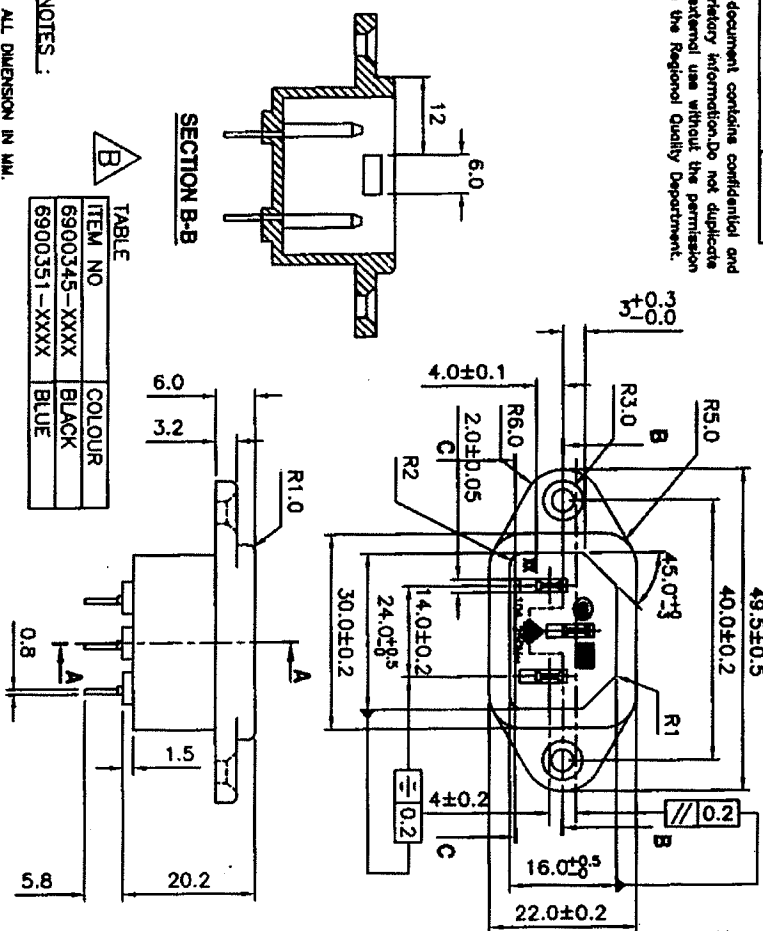
MATERIAL	TIN PLATED BRASS	MATERIAL	MATERIAL SPECIFICATION
MATERIAL No.	C2680R	COLOR	REFER TO TABLE
ELONGATION	30%	FINISHING	-
TENSILE STRENGTH	36~45kgf/mm ²	MATERIAL No.	PBT-4130
HARDNESS VALUE	1/2H	UL LICENSE No.	ES9481
PLATING THICKNESS	3~5um	FLAMMABILITY	UL94V-0
SUPPLIER	FIRST COPPER TECHNOLOGY	SUPPLIER	CHANG CHUN

REV	ECR	BY	DATE	REV	ECR	BY	DATE	ITEM NO. :	SCALE :	PAGE :
A	IMM	KIA.YX	27/12/06					FILENAME :	PROJ. :	
B	070099	JINJIA	16/01/07					COMPONENT MP-0075	THRD ANGLE :	2/2
DRAWN : xig y x								VAC14KS INLET		
RELEASED : 06/12/06								REFER TO TABLE		<p>Customer Property of Volex. This drawing is confidential and not to be distributed to others. It is to be used only for the purposes intended and shall remain the property of Volex. Reproduction or use by any other party without the written consent of Volex is prohibited.</p>
CHECKED : <i>Troming</i>										
DATE : 16/12/06										
APPROVED : <i>WJH</i>										

DRAWING NUMBER : **MP-0075** REVISION : **B**

STANDARD REQUIREMENT

This document contains confidential and proprietary information. Do not duplicate for external use without the permission from the Regional Quality Department.



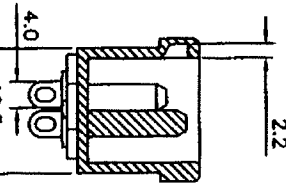
NOTES :

1. ALL DIMENSION IN MM.
2. GENERAL TOLERANCE, UNLESS OTHERWISE SPECIFIED :
 LINEAR : X ± 0.1
 : XX ± 0.3
 : XXX ± 0.5
3. CRITICAL DIMENSIONS, WHERE Y IS IN NUMERICAL DIGITS.
4. CRITICAL POINTS, WHERE Z IS IN ALPHABETICAL ORDER.
5. (S) POINTS.
6. MAX. 0.20MM ALLOWABLE PLASTICS FLASH ALL ROUND.
7. MAX. 0.05MM ALLOWABLE METALLIC BURR ALL ROUND.

TABLE

ITEM NO	COLOUR
6900345-XXXX	BLACK
6900351-XXXX	BLUE

SECTION A-A



MATERIAL SPECIFICATION (CONTACTS)

MATERIAL No.	TIN PLATED BRASS	MATERIAL	FINISHING
C2660R		PBT+30%GF	REFER TO TABLE
30%			
36~45kgf/mm ²			
1/2H			
3~5um			
FIRST COPPER TECHNOLOGY			

MATERIAL SPECIFICATION

MATERIAL No.	COLOR	MATERIAL No.	UL LICENSE No.	FLAMMABILITY	SUPPLIER
		PBT-4130	ES9481	UL94V-0	CHANG CHUN

DRAWN : xid y x **REV** **ECR** **BY** **DATE** **REV** **ECR** **BY** **DATE**

RELEASED :	06/12/06	A	IMM	XIA.YX	22/12/06				
CHECKED :	16/12/07	B	070099	LIU.MIA	16/01/07				
APPROVED :									

ITEM NO. : **REFER TO TABLE** **FILENAME :** **SCALE :** **PROJ. :** **PAGE :**

VAC14KS INLET **COMPONENT** MP-0075 **1 : 1** **THIRD ANGLE** **1/2**

