

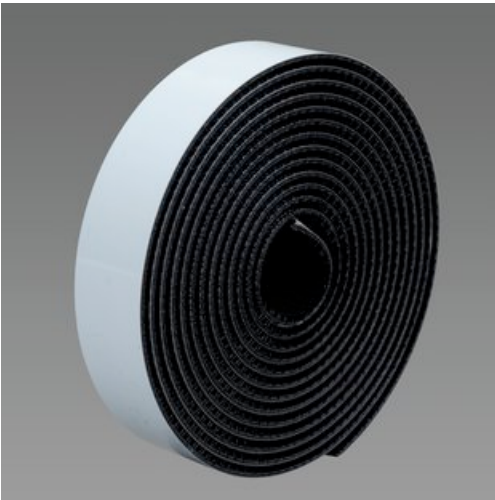


Industrial Adhesives & Tapes

[United States](#) > [All 3M Products](#) > [Market Segments](#) > [Manufacturing and Industry](#) > [Industrial Adhesives & Tapes](#) > [3M™ Dual Lock Fasteners](#) > 3M™ Dual Lock™ Reclosable Fastener SJ3541 400 Black, 1 in x 50 yd 0.23 in (5.8 mm), 2 per case Bulk

3M™ Dual Lock™ Reclosable Fastener SJ3541 400 Black, 1 in x 50 yd 0.23 in (5.8 mm), 2 per case Bulk

3M ID 70070428332 UPC# 00021200862779 Part Number SJ3541 3M Product Number SJ3541



3M™ Dual Lock™ Reclosable Fastener SJ3541 has a rubber based adhesive on the back of a black, polypropylene reclosable fastner. 3M™ Dual Lock™ Reclosable Fastener SJ3540 has a 400 stems per square inch with a 0.23 inch engaged thickness. The closure life is 1,000 times.

- A black fastener with mushroom shaped stems that is backed with a rubber based pressure sensitive adhesive.
- Type 400 stem density polyolefin fastener which mates to Type 170 or 250.
- Designed to bond to many plastics, powder coated paints and other low surface energy materials.
- General Industrial, Packaging, Point of Purchase Displays, Exhibits, Electronics, Construction, Furniture and Maintenance, Repair and Operations (MRO).
- Attach Doors, Access Panels, Signs and Display Components.



[View All Images](#)

Overview Documents

3M™ Dual Lock™ Reclosable Fastener SJ3541 has low temperature performance, with a temperature resistance of up to 120 degrees farheneit and is for indoor use only. This product is for use with many plastics (acrylic, polycarbonate and AS, powder coated paints and low surface energy materials (polypropylene and polyethylene).

Specifications

Adhesive Type	Rubber
Brand	Dual Lock
Closure Life	1000
Color	Black
Engaged Thickness	0.23 Inch
Indoor/Outdoor	Indoor
Industries	General Industrial, Construction, Furniture, Retail, Packaging, Electronics, MRO
Length	50 Linear Yard

Length (Metric)	45.72 m
Liner Thickness	5 mil
Liner Type	White Polyolefin
Maximum Operating Temperature (Fahrenheit)	120 Degree Fahrenheit
Product Form	Roll
Stem Density	400
Width	1 Inch
Width (Metric)	25.4 mm

