



CONTACT • REQUEST A QUOTE

PRODUCTS

RESOURCES

COMPANY

PART NUMBER SEARCH



« Control Knobs

## Skirted Control Knobs

### Series #1930

Control knobs and levers in thermoplastic, with or without flange and index/graduations.

Knobs can be decorated or customized to your specific need.

Perfect knobs for synthesizers and other electronic applications.

A variety of shapes and diameters with plain, tapped bosses or with studs are available with standard threads to fit the application.

A wide range of soft touch control knobs available in thermoplastic overmold.

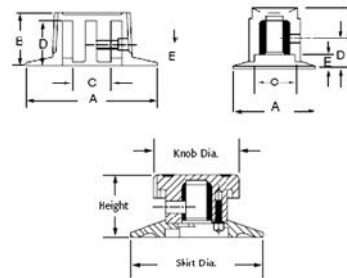
Colors available upon request.

Please note: Not all variations available are listed below. Please [contact Customer Service](#) to inquire about all available options.



REQUEST CAD DRAWING

REQUEST A QUOTE



Item #	Diameter A	Height B	Indicator Line	Inlay	Material Type	Mounting Diameter	Mounting Type	Set Screw Thread	Color
1930AJ	1.5	0.875	Yes	No	Thermoset	0.25	Plain Molded Hole		BLACK
1930BC	1.5	0.875	Yes	Yes	Thermoset	0.25 Flatted to 0.16	Spring		BLACK
1930BJ	1.5	0.875	Yes	Yes	Thermoset	0.25	Bushing		BLACK
1930BP	1.5	0.875	Yes	No	Thermoset	0.25	Plain Molded Hole		BLACK
1930BQ	1.5	0.875	Yes	Yes	Thermoset	0.25	Plain Molded Hole		BLACK
1930BR	1.5	0.875	Yes	No	Thermoset	0.25	Bushing		BLACK
1930CE	1.5	0.875	Yes	No	Thermoset	0.25	Plain Molded Hole		BLACK
1930CG	1.5	0.875	Yes	No	Thermoset	0.25	Plain Molded Hole		BLACK
1930CJ	1.5	0.875	Yes	No	Thermoset	0.25	Plain Molded Hole		BLACK
1930CM	1.5	0.875	Yes	No	Thermoset	0.25	Plain Molded Hole		BLACK
1930CN	1.5	0.875	Yes	No	Thermoset	0.25	Bushing		BLACK

PRODUCTS

RESOURCES

COMPANY

QUESTIONS ?

- Knobs
- Handles
- Leveling Feet
- Latches
- Hinges
- Indexing Plungers
- Electronic Enclosures
- Two-Shot / Soft Touch
- Frac Balls
- Custom Molding

- Engineering Specifications
- Distributor Listing
- Sales Representative Listing

- About Us
- Capabilities
- Certifications
- Contact Us
- Blog
- Careers

questions / comments

Copyright © 2016 Davies Molding, LLC. All Rights Reserved.  
350 Kehoe Blvd. | Carol Stream, IL 60188-1818 | Phone: (800) 554-9208 | Fax: (630) 510-9944