

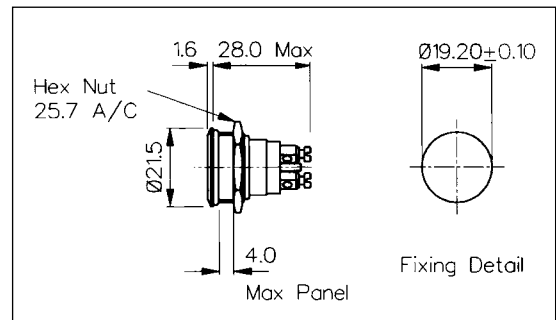
## Stainless Steel Low Profile Vandal Resistant - Momentary

### FRONT PANEL MOUNTING



- Front Panel Sealed to IP68
- 21.5mm diameter
- S.P. Push to Make
- 1A, 50V
- Industry Standard Size

**MP0037**  
Sealed to IP68

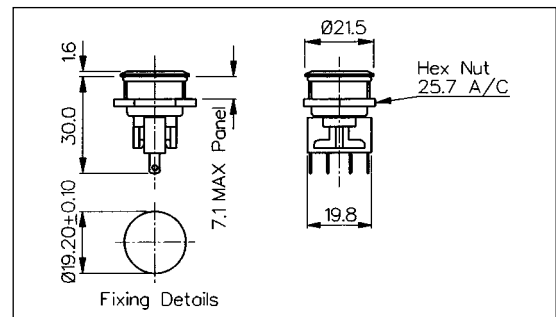


### FRONT PANEL MOUNTING



- Front Panel Sealed to IP66
- 21.5mm diameter
- S.P.C.O. Microswitch
- 5A, 250V a.c.

**MP0031**  
Sealed to IP66

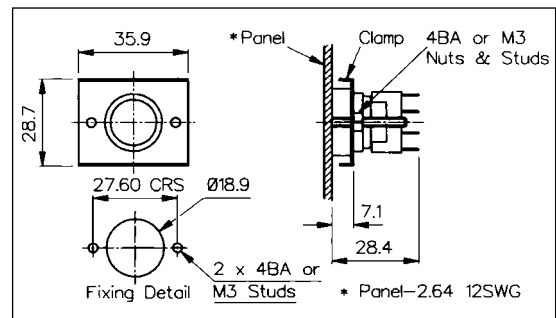


### REAR PANEL MOUNTING



- Rear Panel Mounting
- Flush with Panel
- 19mm diameter
- S.P.C.O. Microswitch
- 5A, 250V a.c.

**MP0034**



| Specification                  | MP0037   | MP0031  | MP0034  |
|--------------------------------|--|---|---|
| Terminations:                  | Screw Terminals  | Solder Tags   | Solder Tags   |
| Switching:                     | S.P. Push to make<br>Momentary action                                  | S.P.C.O. Momentary Action<br>(Microswitch)                                | S.P.C.O. Momentary Action<br>(Microswitch)                  |
| Max. Rating:                   | 1A, 50V  | 5A, 250V a.c.   | 5A, 250V a.c.   |
| Contact Resistance:            | <10mΩ  | <10mΩ   | <10mΩ   |
| Insulation Resistance:         | >10 <sup>5</sup> MΩ  | >10 <sup>3</sup> MΩ.  | >10 <sup>3</sup> MΩ   |
| Dielectric Strength:           | >1.0kV a.c.  | >2.0kV a.c.   | >2.0kV a.c.   |
| Operating Temp. Range:         | -20°C to +70°C   | -20°C to +70°C  | -20°C to +70°C  |
| Sealing (Front of panel only): | Protection Classification: IP68 EN60529<br>1992 (Terminals not sealed) | Protection Classification: IP66 EN60529<br>1992 (Micro switch not sealed) |   |
| Operations                     |  |   |   |
| Mechanical:                    | 1,000,000 (min)  | 1,000,000 (min)   | 250,000 (min)   |
| Electrical:                    | 30,000 (min)   | 35,000 (min)  | 35,000 (min)  |
| Operating Pressure:            | 7.5N (typ)   | 4.7N (typ)  | 2.7N (typ)  |
| Rear Nut Fixing Torque:        | 0.57Nm   | 0.57Nm  | -   |
| Materials                      |  |   |   |
| Mouldings:                     | Glass Filled Nylon   | Glass Filled Nylon  | Glass Filled Nylon  |
| Tags/Terminations:             | Brass, Silver Plated   | Brass, Tin Plated   | Brass, Tin Plated   |
| Switch Body & Button:          | Stainless Steel  | Stainless Steel   | Stainless Steel   |
| Contacts:                      | Brass, Silver Plated, Silver   | Fine Silver   | Fine Silver   |
| Variants:                      | -  | Engraved Button, Non-Rotating Button,<br>details on request               | Engraved Button, Non-Rotating Button,<br>details on request |
| RoHS                           | Compliant  | Compliant   | Compliant   |