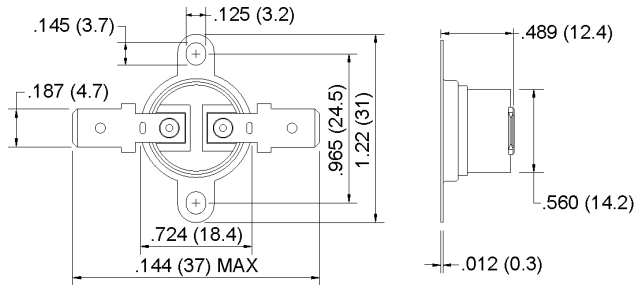


# 1/2" Disc Thermostats - Automatic Reset

## CRA/ORA (625A) Series



### FEATURES

- ISO 9000 certification
- High temperature case
- Quick and easy installation

### APPLICATIONS

- Heaters
- Gas furnaces
- Commercial food equipment

### SPECIFICATIONS

<b>Electrical ratings</b>	125VAC, 15 Amps, Resistive, 100,000 Cycles 250VAC, 10 Amps, Resistive, 100,000 Cycles
<b>Temperature range</b>	50°F to 500°F (10°C to 260°C)
<b>Differential</b>	27°F to 100°F (15°C to 55°C)
<b>Environmental temperature</b>	-40°F to 554°F (-40°C to 290°C)
<b>Insulation resistance</b>	100M $\Omega$ or more (with a 500VDC megger)
<b>Circuit resistance</b>	50m $\Omega$ or less (initial value)
<b>Dielectric strength</b>	1,500VAC/1 minute
<b>Approvals</b>	UL Recognized File No. E145478(S), XAPX2 C-UL Recognized File No. E145478, XAPX8, VDE, CE RoHS Compliant

These snap-action bimetal discs are housed in a ceramic case to handle extremely high temperatures. The increased factory calibrated set points are available up to 500°F (260°C). The contacts can either open or close on temperature rise.

All models are 100% temperature tested before leaving the factory.

Gold contacts available upon request. Value Added options available including over-mold and seal. For details regarding Value Added options, see page 51.

Models available from stock - subject to availability • CRA - Close On-Rise (normally open) • ORA - Open On-Rise (normally closed)

Open On-Rise	Model Number	Open °F	Close °F	Mounting	Terminals
Open	ORA-257-QCV	257 $\pm$ 9	230 $\pm$ 9	rotating bracket	.250 quick connects, vertical
Open	ORA-347-QCV	347 $\pm$ 16	284 $\pm$ 16	rotating bracket	.250 quick connects, vertical
Open	ORA-350-QC	350 $\pm$ 14	290 $\pm$ 20	rotating bracket	.187 quick connects, horizontal
Open	ORA-375-QC	375 $\pm$ 14	315 $\pm$ 20	rotating bracket	.250 quick connects, horizontal
Open	ORA-400-QC	400 $\pm$ 14	340 $\pm$ 20	rotating bracket	.250 quick connects, horizontal
Open	ORA-425-QC	425 $\pm$ 15	375 $\pm$ 20	rotating bracket	.250 quick connects, horizontal
Open	ORA-450-QC	450 $\pm$ 15	370 $\pm$ 20	rotating bracket	.250 quick connects, horizontal
Open	ORA-500-QC	500 $\pm$ 20	420 $\pm$ 20	rotating bracket	.250 quick connects, horizontal
Open	ORA-500-QCV50	500 $\pm$ 20	450 $\pm$ 20	rotating bracket	.250 quick connects, vertical

**Note:** Single operation (one-shot) feature is available. Once the contacts have opened, the contacts will not reclose until ambient temperature drops below -31°F (-35°C).

It is the customer's sole responsibility to specify and determine the suitability of a particular control or component based on their unique individual applications and requirements

(714) 917-1333 • (800) 257-3526 • FAX (714) 917-1355 • E-mail: sales@selcoproducts.com