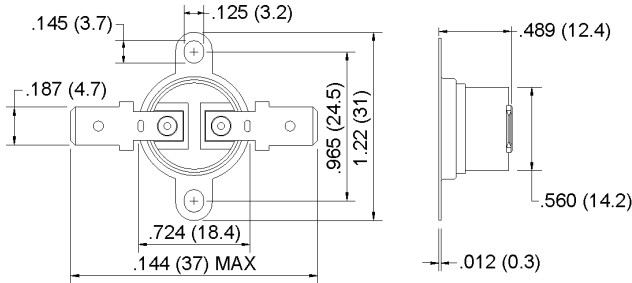


1/2" Disc Thermostats - Automatic Reset

CRA/ORA (625A) Series



FEATURES

- ISO 9000 certification
- High temperature case
- Quick and easy installation

APPLICATIONS

- Heaters
- Gas furnaces
- Commercial food equipment

SPECIFICATIONS

Electrical ratings	125VAC, 15 Amps, Resistive, 100,000 Cycles 250VAC, 10 Amps, Resistive, 100,000 Cycles
Temperature range	50°F to 500°F (10°C to 260°C)
Differential	27°F to 100°F (15°C to 55°C)
Environmental temperature	-40°F to 554°F (-40°C to 290°C)
Insulation resistance	100M Ω or more (with a 500VDC megger)
Circuit resistance	50m Ω or less (initial value)
Dielectric strength	1,500VAC/1 minute
Approvals	UL Recognized File No. E145478(S), XAPX2 C-UL Recognized File No. E145478, XAPX8, VDE, CE RoHS Compliant

These snap-action bimetal discs are housed in a ceramic case to handle extremely high temperatures. The increased factory calibrated set points are available up to 500°F (260°C). The contacts can either open or close on temperature rise.

All models are 100% temperature tested before leaving the factory.

Gold contacts available upon request. Value Added options available including over-mold and seal. For details regarding Value Added options, see page 51.

Models available from stock - subject to availability • CRA - Close On-Rise (normally open) • ORA - Open On-Rise (normally closed)

Open On-Rise	Model Number	Open °F	Close °F	Mounting	Terminals
Open	ORA-257-QCV	257 \pm 9	230 \pm 9	rotating bracket	.250 quick connects, vertical
Open	ORA-347-QCV	347 \pm 16	284 \pm 16	rotating bracket	.250 quick connects, vertical
Open	ORA-350-QC	350 \pm 14	290 \pm 20	rotating bracket	.187 quick connects, horizontal
Open	ORA-375-QC	375 \pm 14	315 \pm 20	rotating bracket	.250 quick connects, horizontal
Open	ORA-400-QC	400 \pm 14	340 \pm 20	rotating bracket	.250 quick connects, horizontal
Open	ORA-425-QC	425 \pm 15	375 \pm 20	rotating bracket	.250 quick connects, horizontal
Open	ORA-450-QC	450 \pm 15	370 \pm 20	rotating bracket	.250 quick connects, horizontal
Open	ORA-500-QC	500 \pm 20	420 \pm 20	rotating bracket	.250 quick connects, horizontal
Open	ORA-500-QCV50	500 \pm 20	450 \pm 20	rotating bracket	.250 quick connects, vertical

Note: Single operation (one-shot) feature is available. Once the contacts have opened, the contacts will not reclose until ambient temperature drops below -31°F (-35°C).

It is the customer's sole responsibility to specify and determine the suitability of a particular control or component based on their unique individual applications and requirements

(714) 917-1333 • (800) 257-3526 • FAX (714) 917-1355 • E-mail: sales@selcoproducts.com

Part Number Configurator

Custom Manufactured 1/2" Disc Thermostats

Example: OA-100-LPH



OP		MD		SP		VA		LD		AWG	

Example: OA-60-EV01218

(O) Open on Rise; (A) Model; (60) 60°F; (EV) Epoxy Seal, Vertical Leads; (12) 12" Leads; (18) 18 AWG; (A) .250 Strip Termination

OP OPERATION

O	Open on Rise
C	Close on Rise

MD MODEL

ID	Temp Range	Ratings	Cycles
A	32°- 302°F	15A@125VAC	100,000
(602)		8A@250VAC	
M*	122°- 302°F	15A@125VAC	6,000
(603)		10A@250VAC	
MH*	122°- 401°F	15A@125VAC	6,000
(623)		10A@250VAC	
R**	32°- 365°F	15A@125VAC	100,000
(622A/P)		10A@250VAC	
RA	32°- 500°F	15A@125VAC	100,000
(625)		10A@250VAC	

* 603, 623; Manual Reset ** 622P; 4 Post Body

SP SET POINT*

50-500	50°-500°F	Open/Close Temperature
--------	-----------	------------------------

VA VALUE ADDED

LH	Soldered Wire Leads Horizontal Axial
LR	Soldered Wire Leads Horizontal Radial
LV	Soldered Wire Leads Vertical
EH	Epoxy Seal with Horizontal Leads Axial
ER	Epoxy Seal with Horizontal Radial
EV	Epoxy Seal with Vertical Leads

LD LEADS LENGTH

1-999	1-999" Leads Length
-------	---------------------

AWG CONTACT MATERIAL

16-28	16-28 AWG
-------	-----------

TR TERMINATION*

A	Strip .250
B	Strip .125
C	Strip .500
D	Blunt Cut
E	.250 QC Male Insulated
F	.250 QC Male Uninsulated
G	.187 QC Male Insulated
H	.187 QC Male Uninsulated
I	.250 QC Female Insulated
J	.250 QC Female Uninsulated
K	.187 QC Female Insulated
L	.187 QC Female Uninsulated
M	Custom Connector

* If not present, default termination is Strip .250" (A)

IMPORTANT NOTE: It is the customer's sole responsibility to specify and determine the suitability of a particular control or component based on their unique individual applications and requirements, with respect to temperature settings, cycle life, electrical load and environmental conditions.

For more information on Selco Products please visit us at: www.selcoproducts.com



Selco Products, Inc.
8780 Technology Way
Reno, Nevada 89521-5908

Tel +1.800.257.3526
Fax +1.775.674.5111
Email sales@selcoproducts.com

©2016 Selco Products, Inc. v04-14-16.
Selco Products is registered trademark of Selco Products, Inc. Information is subject to change without notice. Selco offers a wide range of products for North American and Global markets. Printed in USA.