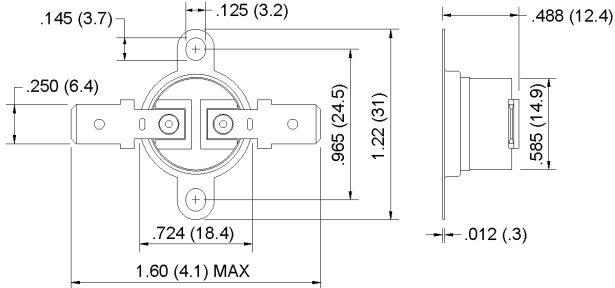


# 1/2" Disc Thermostats - Automatic Reset

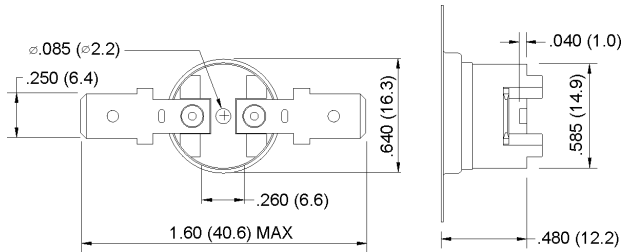
## CR/OR (622A and 622P) Series



CR/OR (622A) Series - Standard Case



622P Series - 4 Post Design (pictured above)



### FEATURES

- 4-post design
- High temperature polyester
- Approval by UL, CSA, VDE, CE

### APPLICATIONS

- Coffee makers
- Microwave ovens
- Sandwich makers

These SPST, snap-action disc thermostats are suitable for a drip-type coffee maker temperature limiting/regulating control. They are preset and tamper proof.

Each device is 100% tested and inspected before leaving the factory.

Gold contacts available upon request. Value Added options available including over-mold and seal. For details regarding Value Added options, see page 51.

### SPECIFICATIONS

<b>Electrical ratings</b>	125VAC, 15 Amps, Resistive, 100,000 Cycles 250VAC, 10 Amps, Resistive, 100,000 Cycles
<b>Temperature range</b>	50°F to 365°F (10°C to 185°C)
<b>Differential</b>	18°F to 45°F (10°C to 25°C)
<b>Environmental temperature</b>	-4°F to 392°F (-20°C to 200°C)
<b>Coffee maker, normal &amp; dry override/over shoot</b>	455°F (235°C)
<b>Insulation resistance</b>	100M Ω or more (with a 500VDC megger)
<b>Circuit resistance</b>	50m Ω or less (initial value)
<b>Dielectric strength</b>	1,500VAC/1 minute
<b>Approvals</b>	UL Recognized File No. E145478(S), XAPX2 CSA File No. LR63201 VDE File. F-14713, CE RoHS Compliant

Models available from stock - subject to availability • CR - Close On-Rise (normally open) • OR - Open On-Rise (normally closed)

Open On-Rise	Model Number	Open °F	Close °F	Mounting	Terminals
Open	OR-222*	222 ± 5	168 ± 10	no bracket	.250 quick connects, horizontal
Open	OR-285*	285 ± 7	245 ± 11	no bracket	.250 quick connects, horizontal
Open	OR-325**	325 ± 7	275 ± 11	rotating bracket	solder, horizontal
Open	OR-350-QC**	350 ± 9	320 ± 12	rotating bracket	.250 quick connects, horizontal
Open	OR-350-QCV**	350 ± 9	320 ± 12	rotating bracket	.250 quick connects, vertical
Open	OR-365-QC**	365 ± 9	335 ± 12	rotating bracket	.250 quick connects, horizontal

\* 4-Post design

\*\* Standard case

**Note:** Single operation (one-shot) feature is available. Once the contacts have opened, the contacts will not reclose until ambient temperature drops below -31°F (-35°C).

It is the customer's sole responsibility to specify and determine the suitability of a particular control or component based on their unique individual applications and requirements

(714) 917-1333 • (800) 257-3526 • FAX (714) 917-1355 • E-mail: sales@selcoproducts.com