

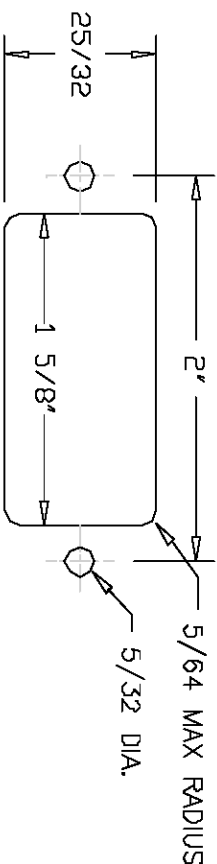
SPECIFICATIONS

RESISTANCE ----- 10K
 LINEARITY (INDEPENDENT) ----- ±3%
 POWER RATING ----- 0.1 WATTS
 ELECTRICAL ANGLE ----- 30° ±5'
 MECHANICAL ANGLE ----- 15° ~ ±19'
 CENTER RETURN ACCURACY ----- 50% ±3%
 RESOLUTION ----- ESSENTIALLY INFINITE
 MAX. WIPER OUTPUT ----- 1 MA RECOMMENDED, 5MA MAX.
 OUTPUT SMOOTHNESS ----- BELOW 0.2% AGAINST INPUT VOLTAGE
 CONTACT RESISTANCE VARIATION ----- BELOW 5% C.R.V.
 INSULATION RESISTANCE ----- 1000MEG OHMS @ 50VDC MIN.
 DIELECTRIC STRENGTH ----- 1 MINUTE AT 500 VAC
 STARTING TORQUE ----- .15 OZ. IN. ~ .18 OZ. IN.
 WIPER CURRENT ----- BELOW 10 U.A.
 WEIGHT ----- APPROX. 0.7 OZ.
 OPERATING TEMPERATURE ----- 20°C TO +65°C
 STOPPER STRENGTH ----- OVER 0.03 OZ. IN.
 VIBRATION ----- 10 - 55 Hz, 10G.
 SHOCK ----- 30G.
 LIFE EXPECTANCY ----- APPROX. 2,000,000 OPERATIONS.

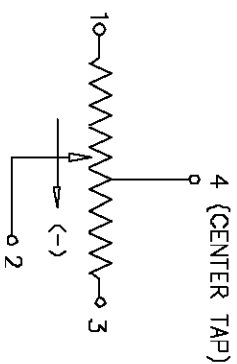
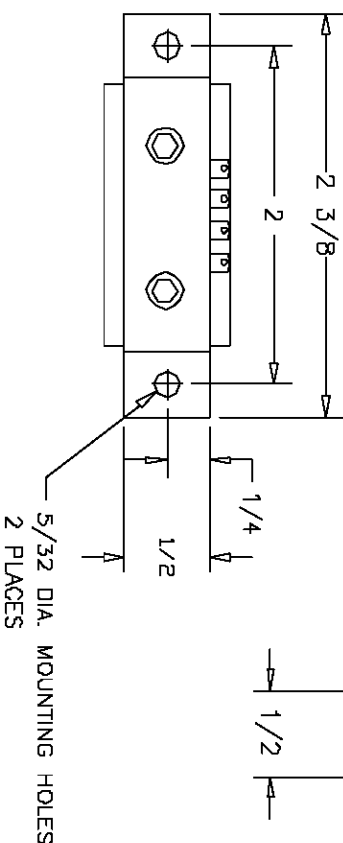
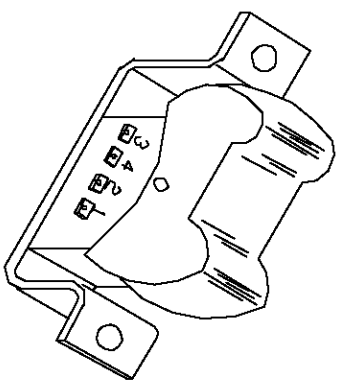
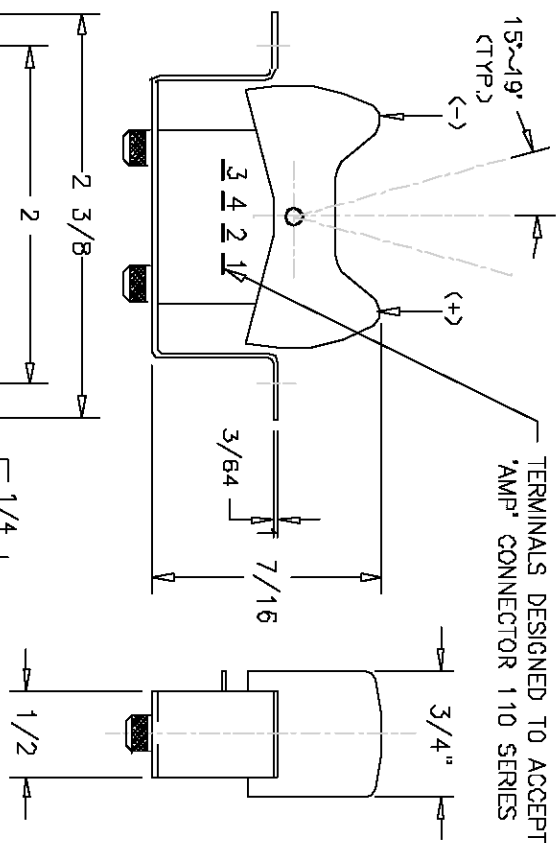
MATERIALS

HOUSING ----- HIGH TEMP. THERMO PLASTIC
 TERMINALS ----- GOLD PLATED BRASS
 RESISTANCE ELEMENT ----- CONDUCTIVE PLASTIC

SUGGESTED PANEL LAYOUT



REV.	BY	DATE	P/N
			J3R-1-10K



ETI SYSTEMS
 CARLSBAD CALIFORNIA

2251 LAS PALMAS DR.
 CARLSBAD, CA 92009
 PHONE (760) 929-0749
 FAX (760) 929-0748
 WWW.ETISYSTEMS.COM

TITLE

ROCKER POT

PART NO.

J3R-1-10K