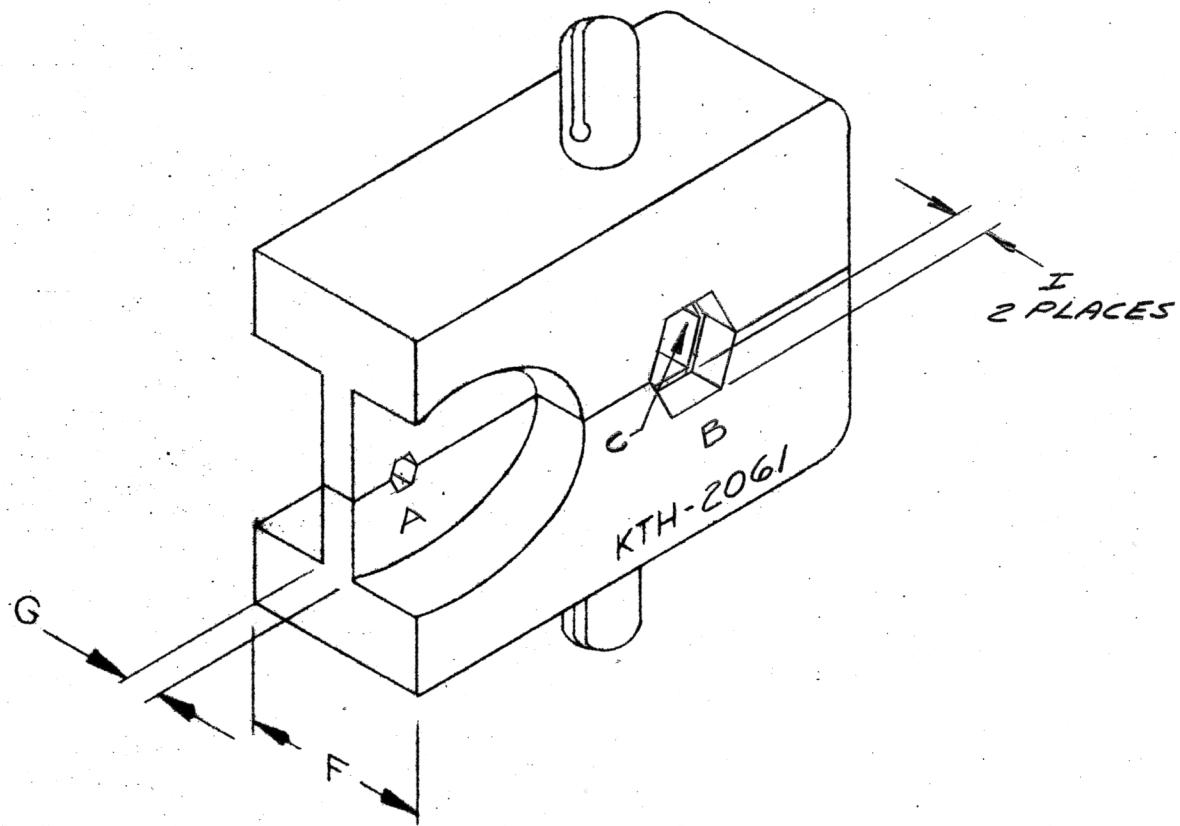




Kings Part	Military Part	Gender	Dimensions (in inches)				Cable Group	Cross Reference To:	Cable Procedure	
			A	B	C	D				
KTH-2061			0.069		0.213			Connector	NONE	

REVISIONS

ISSUE	CHANGES
2	CN 27545 C SD 7 NOV 85



NOTES:

1. FOR USE WITH RG-55, 58, 141, 142, 223 & ITT BA 13077A CABLE GROUPS.

REF:
FINISH
SPEC.
MATL.
SPEC.

HEX SIZES (ACROSS FLATS)				DIE WIDTH	WEB WIDTH		
A	B	C	D	F	G	H	I
.069	.253	.213		.500	.080		.083

CRIMP DIE	
DRAWN BG.	DATE 13 OCT 72
APPR.	DATE

UNLESS OTHERWISE SPECIFIED:

1. TOLERANCES: FRACTIONS & 2 PLACE DECIMALS $\pm .010$
3 PLACE DECIMALS $\pm .004$
ANGLES $\pm 0^{\circ} 30'$
T. I. R. CONCENTRICITY OF ANY 2 DIAMETERS MAY NOT EXCEED HALF THE SUM OF THEIR TOLERANCES.
2. REMOVE ALL BURRS, BREAK SHARP EDGES .005 MAX.
3. NO FILLETS PERMITTED.
4. SURFACE ROUGHNESS 63 MICROINCHES RMS MAX.
5. ALL DIMENSIONS PRIOR TO PLATING.

KINGS ELECTRONICS
40 MARBLEDALE ROAD
TUCKAHOE, N. Y. 10707

KTH-2061

S-D