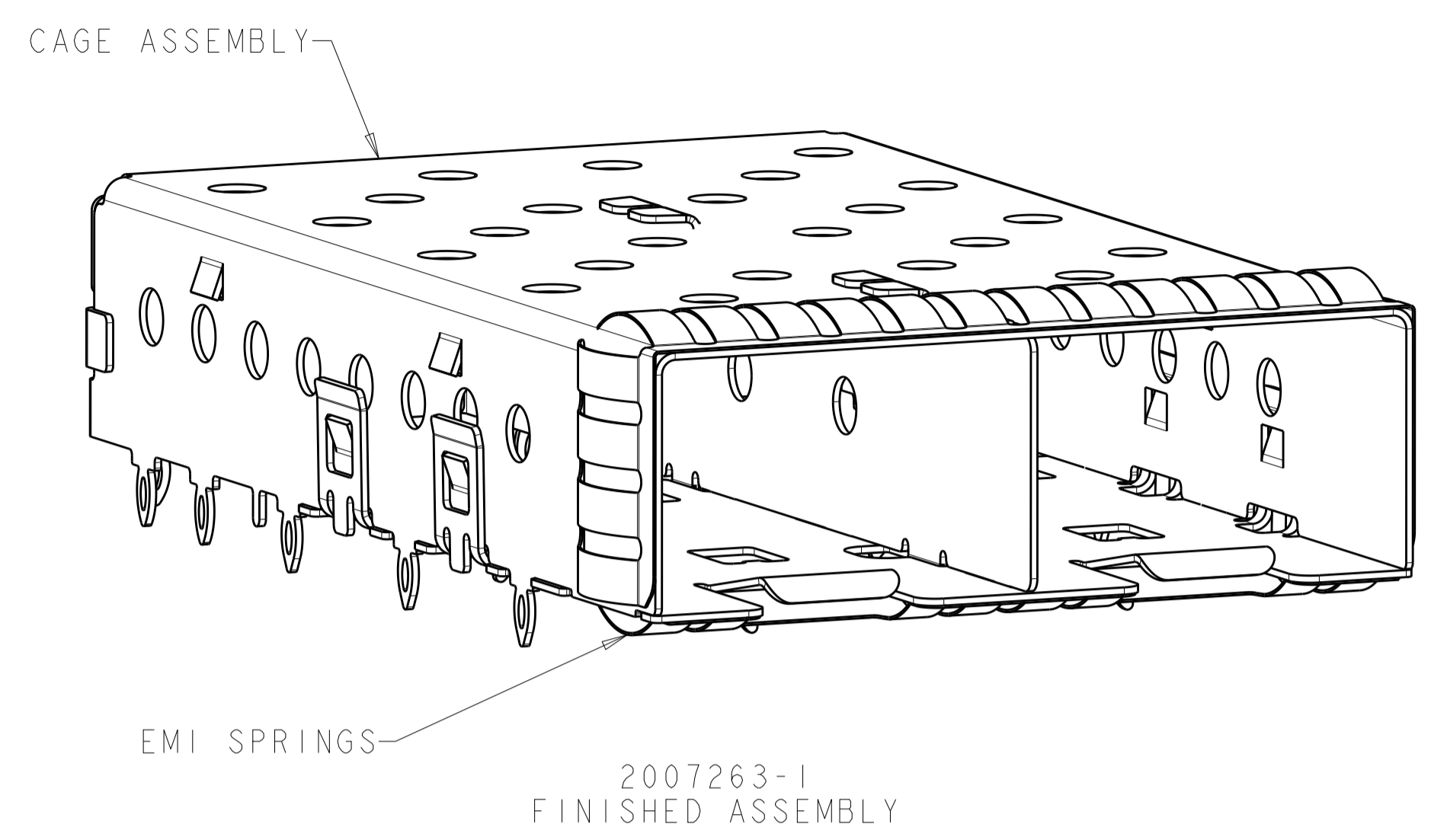
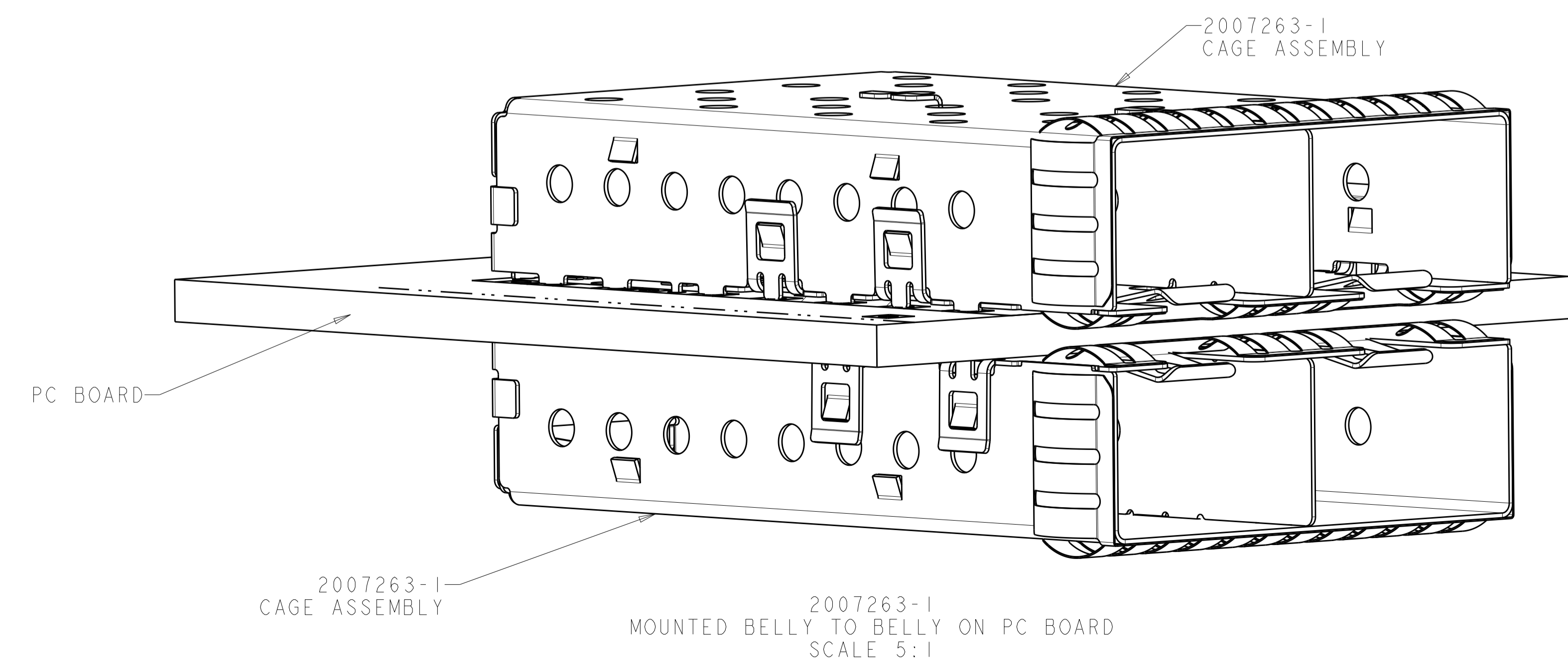
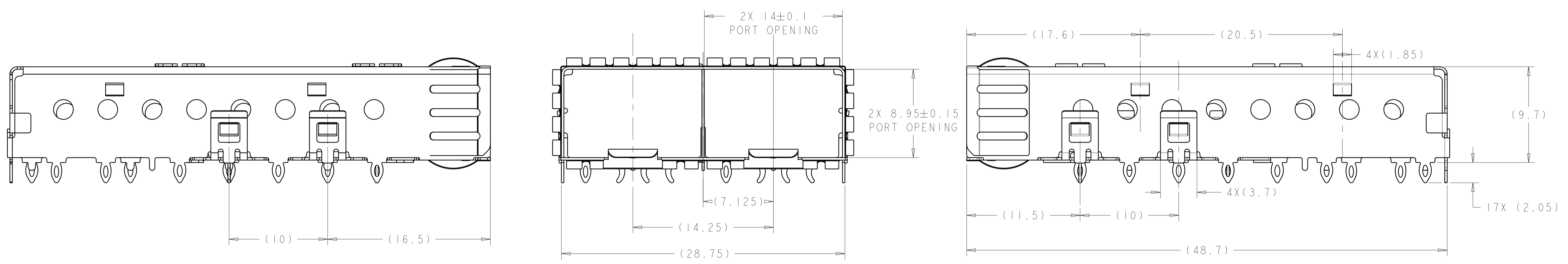


LOC	DIST	REVISIONS					
GP	00	P	LTN	DESCRIPTION	DATE	DWN	APVD
		D		REVISED PER ECO-12-014021	100ED2012	TD	AC
		D1		REVISED PER ECO-13-017631	04DEC2013	JZ	SH
		E		REVISED PER ECO-16-000138	06JAN2016	AJ	SH
		E1		REVISED PER ECO-16-003066	03MAR2016	PP	SH



- 1. MATERIAL: CAGE ASSEMBLY: 0.25mm THICK NICKEL SILVER ALLOY  
EMI SPRINGS: COPPER ALLOY
- 2. FINISH:  
SPRINGS - MINIMUM OF 0.8um MATTE TIN PLATED OVER A MINIMUM OF 0.8um NICKEL UNDERPLATE.  
NON-PLATED EDGES PERMISSIBLE.
- 3. MATES WITH SFP MSA COMPLIANT TRANSCEIVERS.
- 4. PADS AND VIAS CHASSIS GROUND.
- 5. INTERPRETATION OF DATUM REFERENCE FRAME IN ACCORDANCE WITH SECT 4.4.1.1 OF ASME Y14.5M-1994.
- 6. MINIMUM PC BOARD THICKNESS:  
SINGLE SIDED = 1.50  
DOUBLE SIDED = 2.25
- 7. HOLE PATTERN REPEATS FOR EACH PORT, SPACING BETWEEN PORTS IS 14.25mm.
- 8. DATUM AND BASIC DIMENSION ESTABLISHED BY CUSTOMER.
- 9. REFERENCE APPLICATION SPEC. 114-13120, HOLE A, FOR RECOMMENDED DRILL HOLE DIAMETER AND PLATING THICKNESS.
- 10. REFERENCE APPLICATION SPEC. 114-13120, HOLE B, FOR RECOMMENDED DRILL HOLE DIAMETER AND PLATING THICKNESS.
- 11. CERTAIN MATING TRANSCEIVERS MAY REQUIRE ADDITIONAL PCB THICKNESS THAT WOULD NEED TO BE DETERMINED BY THE CUSTOMER.
- 12. PRODUCT COMPLIES WITH SPECIFICATION SFF-8433 IMPROVED PLUGGABLE FORM FACTOR FOR SFP+ GANGED CAGES.
- 13. THERE ARE NO BOTTOM CRESCENT PINS IN 2007263-1.
- 14. THESE HOLES OF PCB SHOULD NOT EXIST FOR 2007263-3.



2007263-5
2007263-3
2007263-1
PART NUMBER

THIS DRAWING IS A CONTROLLED DOCUMENT.

DIMENSIONS: mm

TOLERANCES UNLESS OTHERWISE SPECIFIED:

0 PLC	±0.1
1 PLC	±0.1
2 PLC	±0.1
3 PLC	±0.1
4 PLC	±0.1
ANGLES	±1°

MATERIAL: FINISH:

Customer Drawing

DWN: M. SCHMITT 17JUL2007  
CHK: M. SCHMITT 17JUL2007  
APVD: B. WERTZ 17JUL2007

NAME: SFP+ 1X2 CAGE ASSEMBLY  
PRESS FIT, EXTERNAL EMI SPRINGS

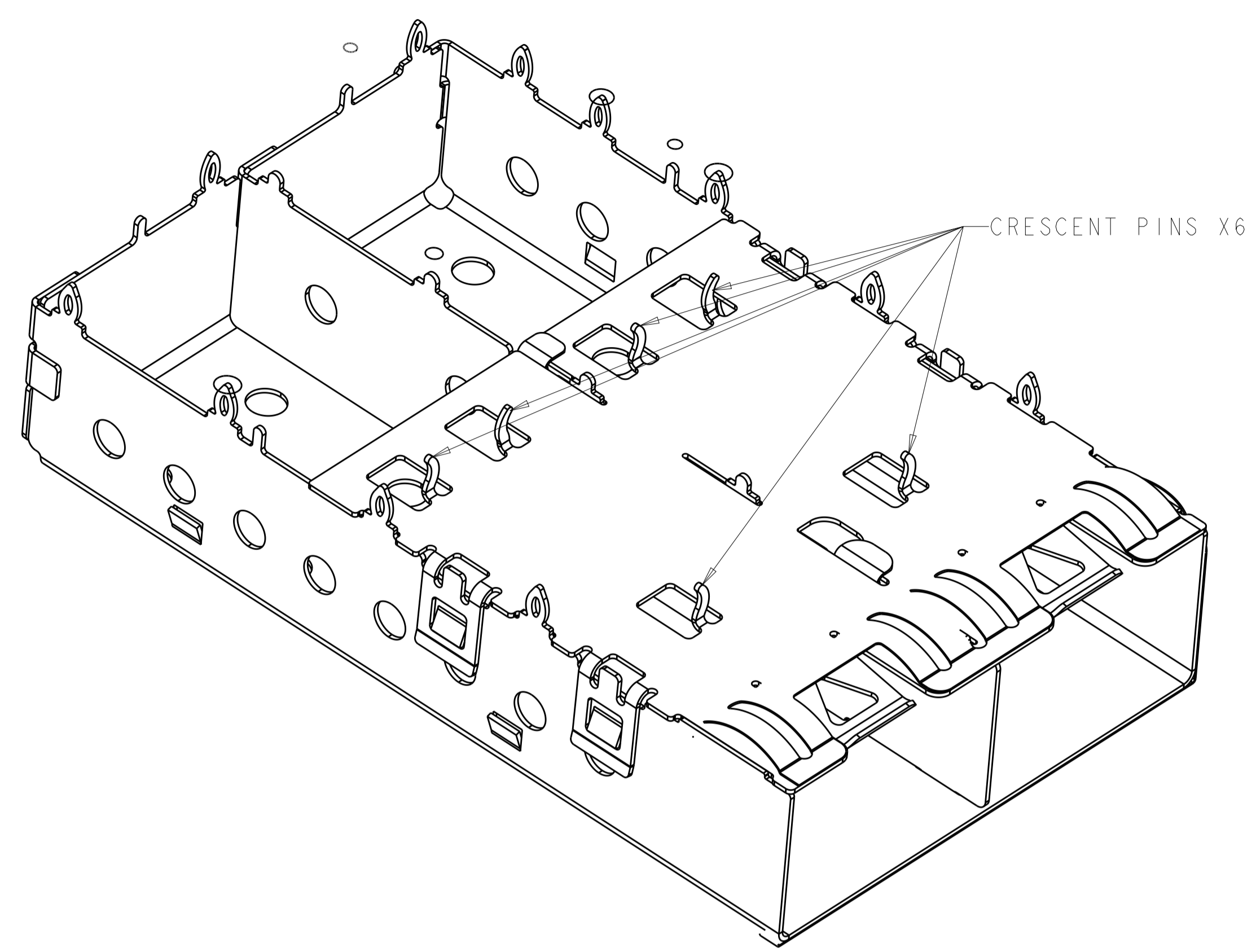
PRODUCT SPEC: 108-2364  
APPLICATION SPEC: 114-13120

SIZE: A1 CAGE CODE: 00779 DRAWING NO: 2007263

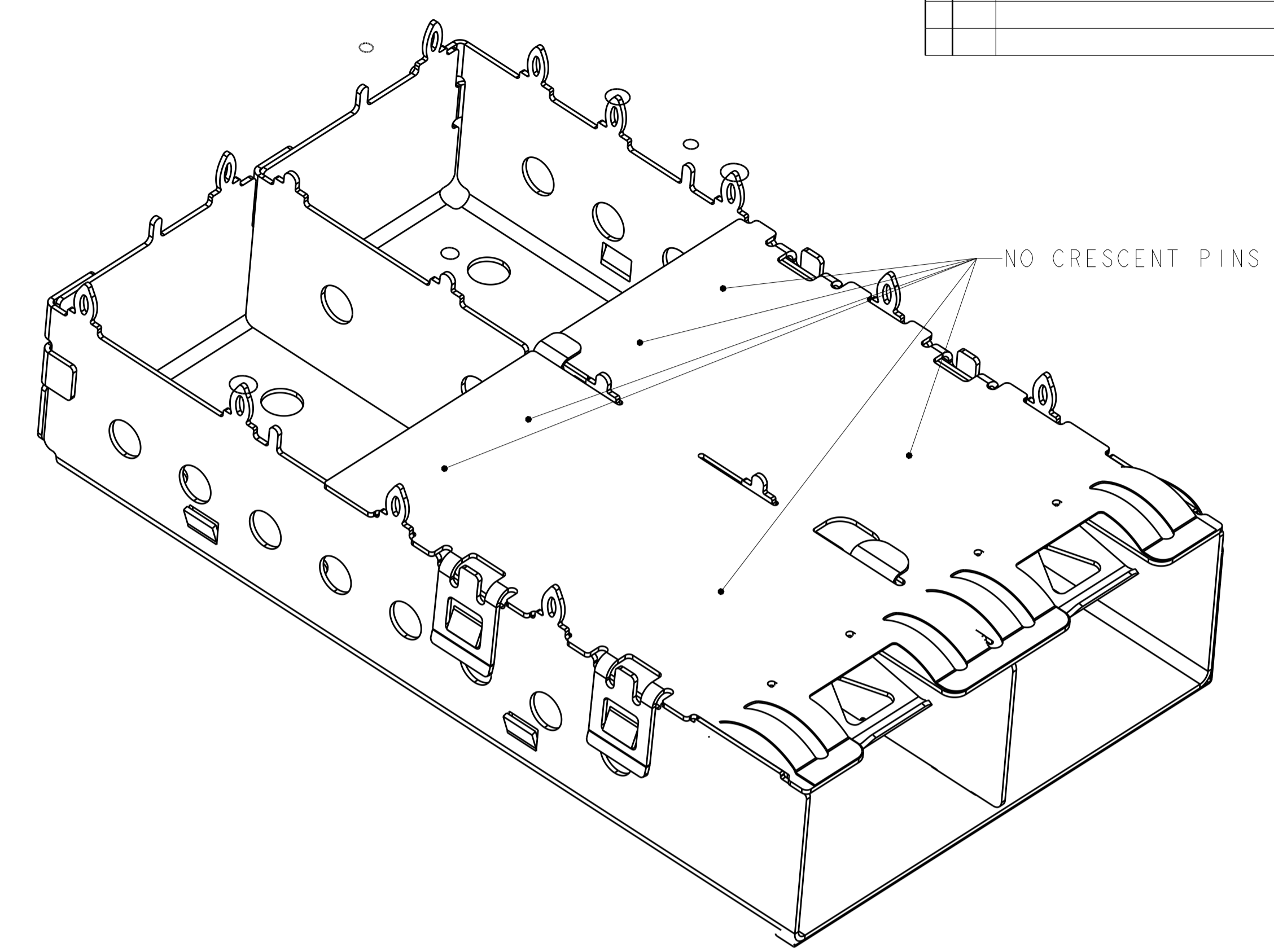
RESTRICTED TO: -

SCALE: 5:1 SHEET: 1 OF 5 REV: E1

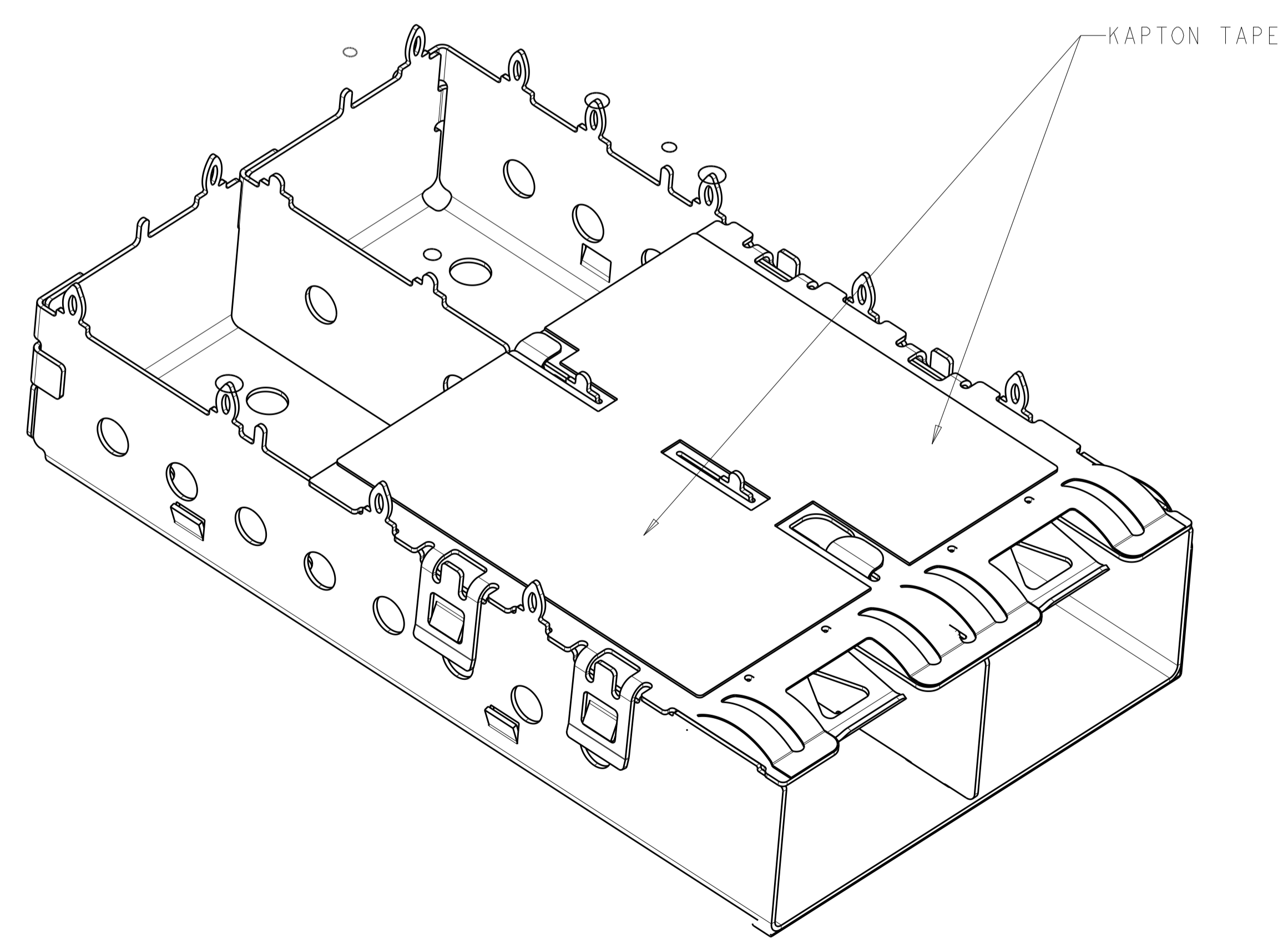
LOC	DIST	REVISIONS					
GP	00	P	LYR	DESCRIPTION	DATE	DWN	APVD
		-		SEE SHEET 1			



2007263-1 AS SHOWN  
 WITH CRESCENT PINS X6  
 SCALE 5:1



2007263-3 IS THE SAME TO 2007263-1 AS SHOWN  $\Delta$   
 EXCEPT WITH NO CRESCENT PINS  
 SCALE 5:1



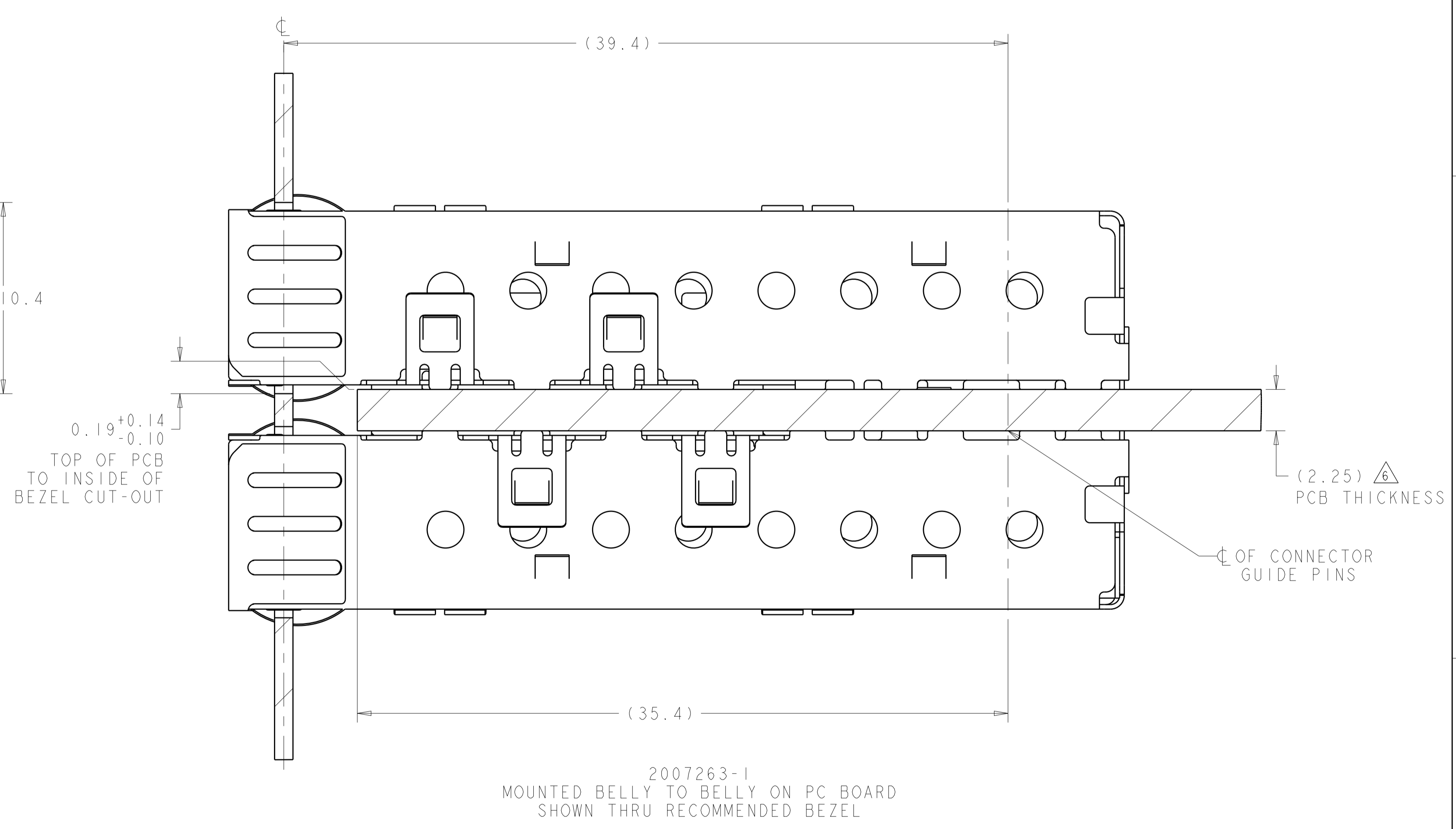
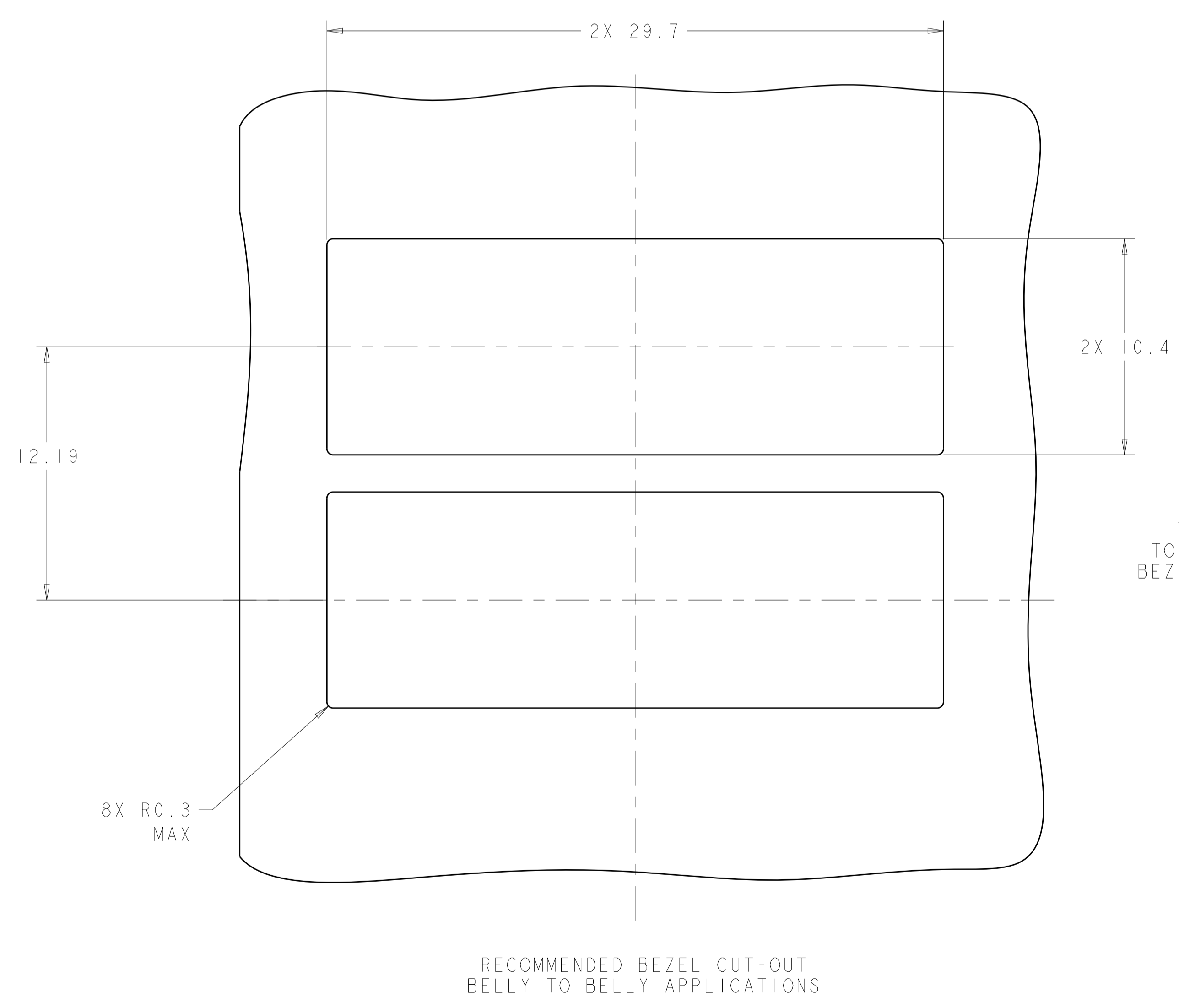
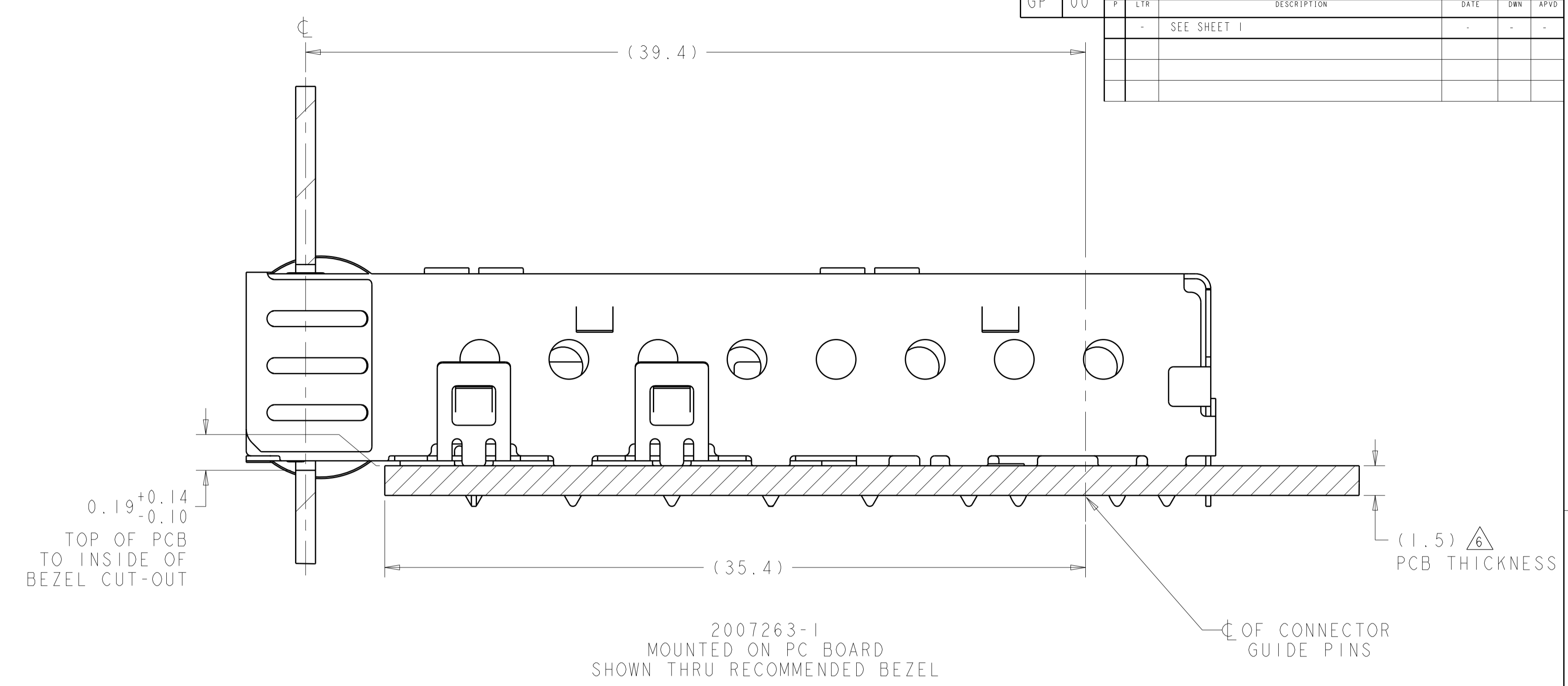
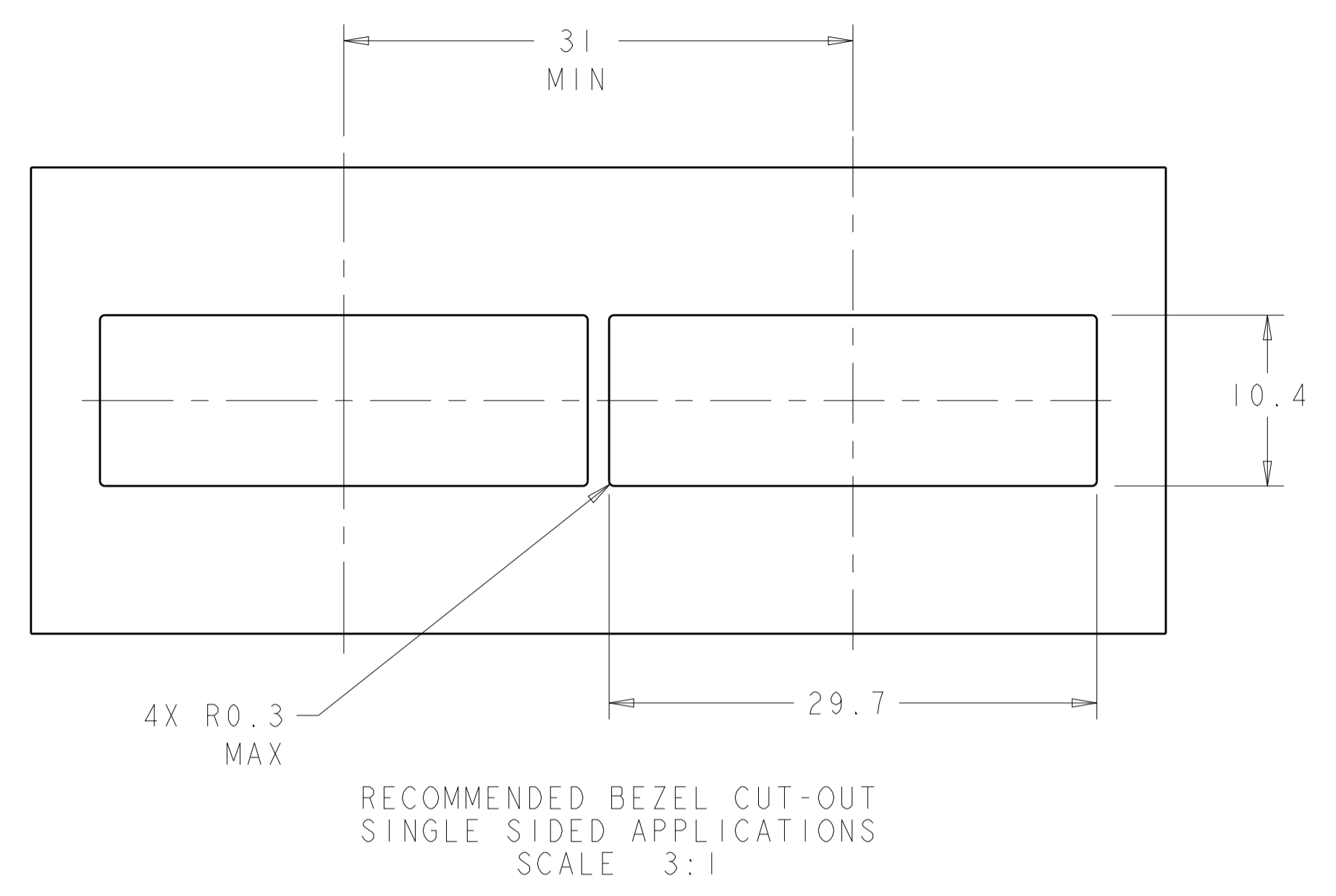
2007263-5 IS AS SHOWN WITH KAPTON TAPE  
 SCALE 5:1

THIS DRAWING IS A CONTROLLED DOCUMENT.		DWN	M. SCHMITT	17JUL2007	TE Connectivity NAME SFP+ 1X2 CAGE ASSEMBLY PRESS FIT, EXTERNAL EMI SPRINGS
DIMENSIONS:		CHK	M. SCHMITT	17JUL2007	
mm		APVD	B. WERTZ	17JUL2007	
TOLERANCES UNLESS OTHERWISE SPECIFIED: 0 PLC $\pm 0.1$ 1 PLC $\pm 0.1$ 2 PLC $\pm 0.1$ 3 PLC $\pm 0.1$ 4 PLC $\pm 0.1$ ANGLES $\pm 0.1$		PRODUCT SPEC	108-2364	APPLICATION SPEC	
MATERIAL FINISH		SIZE CAGE CODE DRAWING NO A100779C=2007263		RESTRICTED TO	
Customer Drawing		SCALE 6:1		SHEET 2 OF 7	REV E1

LOC	DIST	REV	DATE	BY	APPV
GP	00				

REVISIONS		DATE	BY	APPV
1	SEE SHEET 1	-	-	-

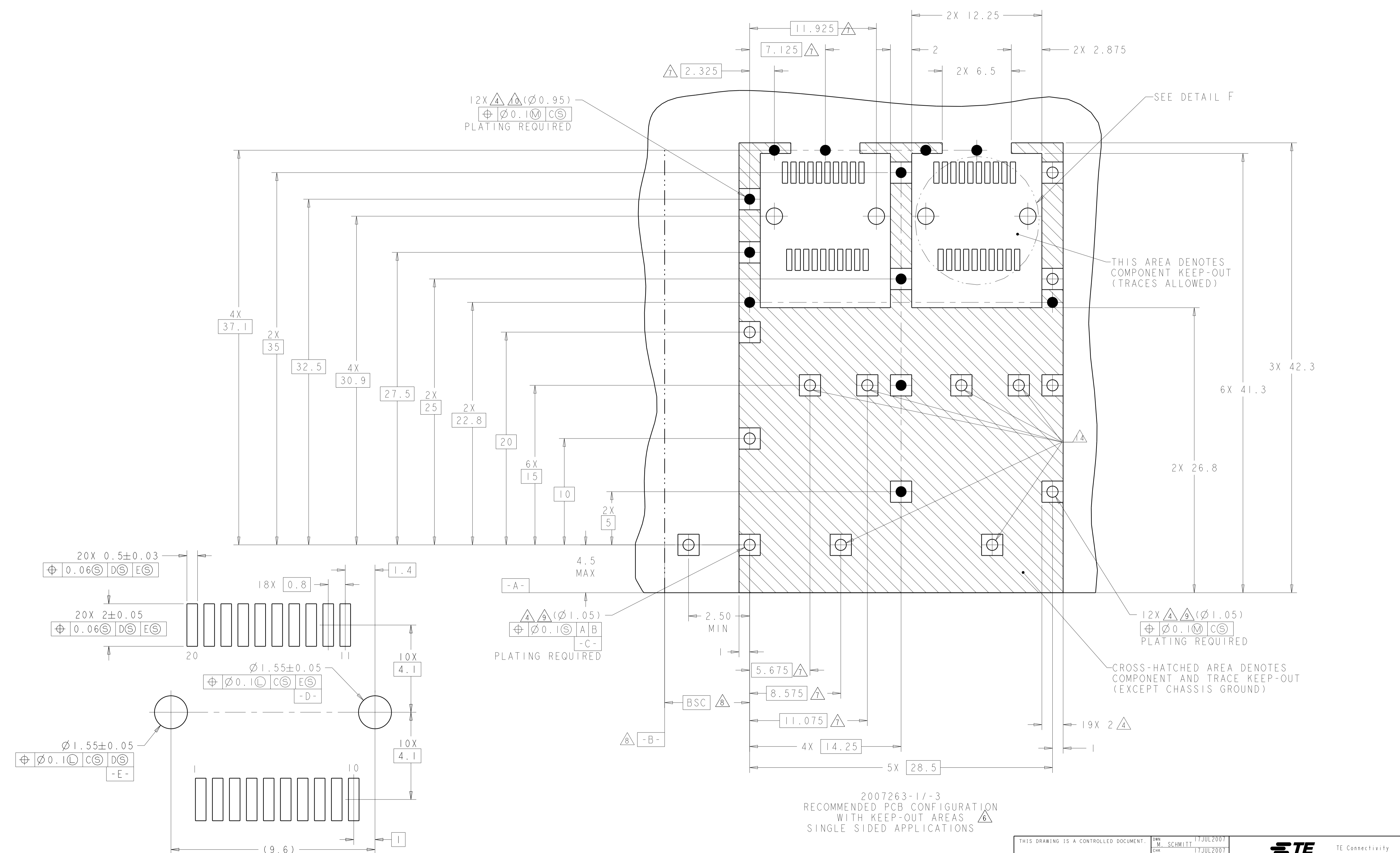


THIS DRAWING IS A CONTROLLED DOCUMENT.

DIMENSIONS:	TOLERANCES UNLESS OTHERWISE SPECIFIED:	OWN: M. SCHMITT 17JUL2007	CHK: M. SCHMITT 17JUL2007	APV: B. WERTZ 17JUL2007
mm	0 PLC $\pm 0.1$	PRODUCT SPEC	NAME: SFP+ 1X2 CAGE ASSEMBLY	
	1 PLC $\pm 0.1$	APPLICATION SPEC	PRESS FIT, EXTERNAL EMI SPRINGS	
	2 PLC $\pm 0.1$	114-13120	SIZE: A1	CAGE CODE: 00779
	3 PLC $\pm 0.1$	Customer Drawing	SCALE: 6:1	SHEET: 3 OF 7
	4 PLC $\pm 0.1$			REV: E1
	ANGLES $\pm 1^{\circ}$			
	FINISH			

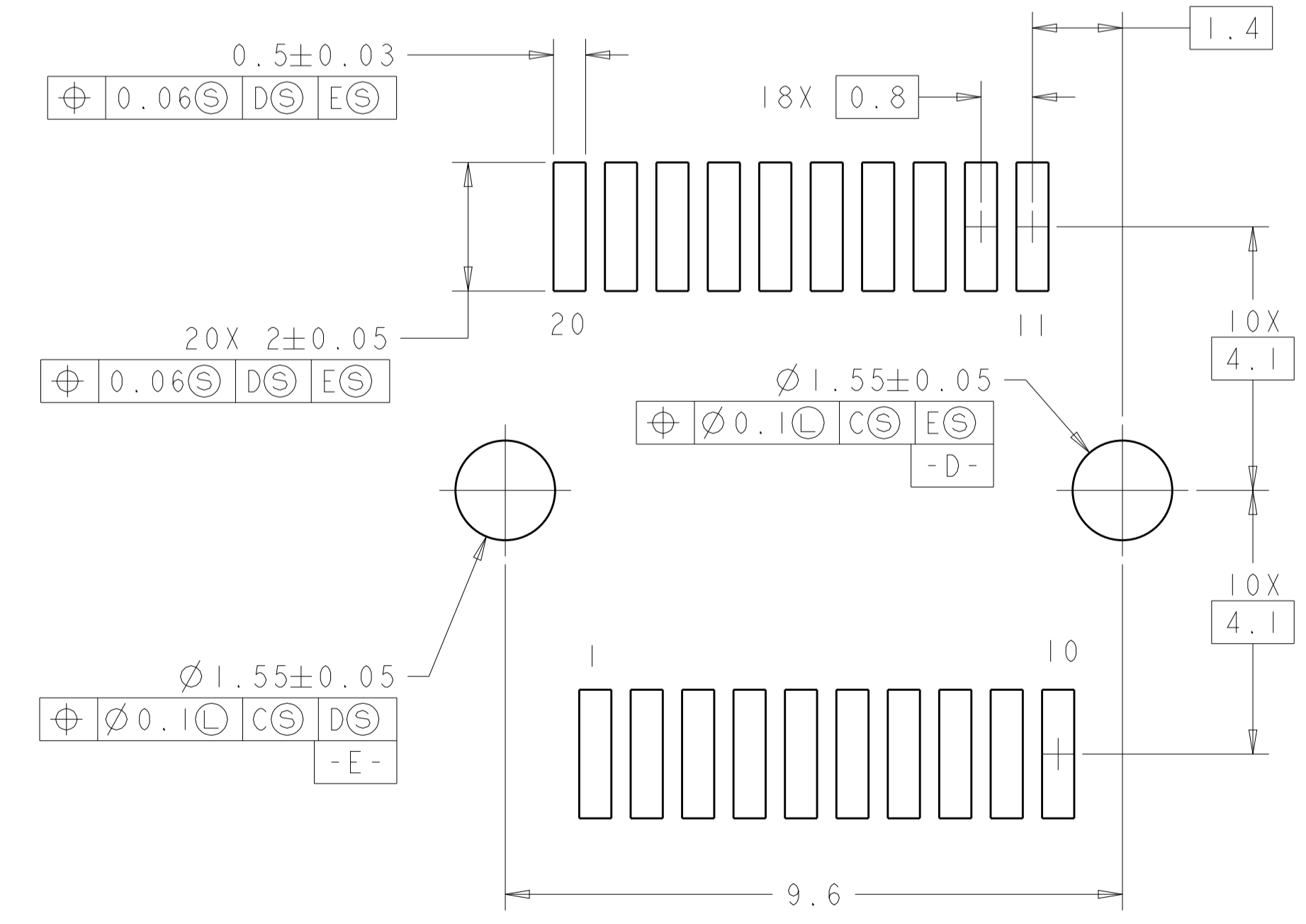
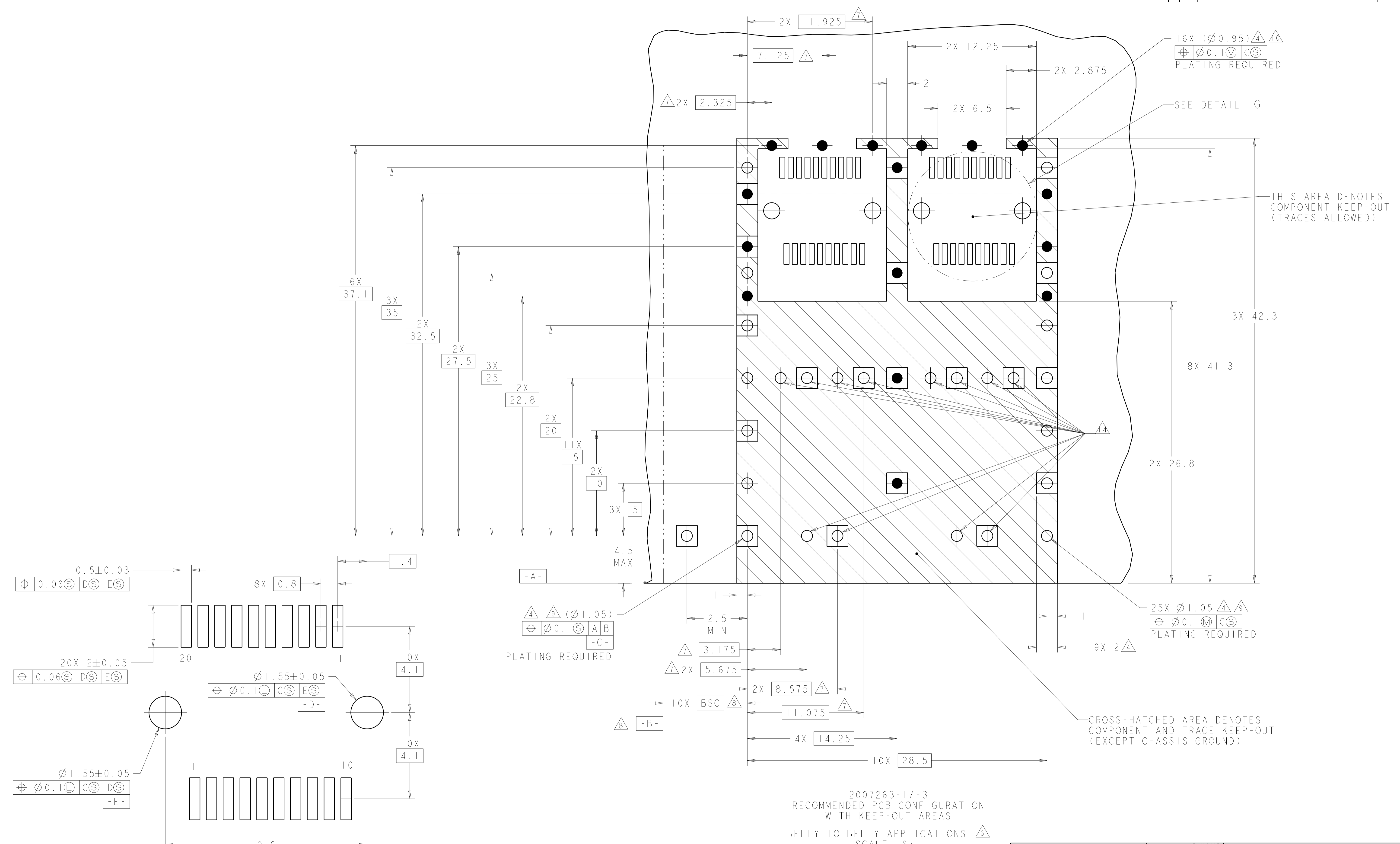
STE TE Connectivity

LOC		DIST		REVISONS				
P	LTN	DATE	DMN	APVD	DESCRIPTION	DATE	DMN	APVD
-	-	-	-	-	SEE SHEET 1	-	-	-



THIS DRAWING IS A CONTROLLED DOCUMENT.		DMN M. SCHMITT 17JUL2007	TE Connectivity
DIMENSIONS:		CHK M. SCHMITT 17JUL2007	
TOLERANCES UNLESS OTHERWISE SPECIFIED:		APVD B. WERTZ 17JUL2007	NAME SFP+ 1X2 CAGE ASSEMBLY PRESS FIT, EXTERNAL EMI SPRINGS
mm	0 PLC $\pm$ 0.1	PRODUCT SPEC	SIZE 108-2364
	1 PLC $\pm$ 0.1	APPLICATION SPEC	RESTRICTED TO
	2 PLC $\pm$ 0.1		SIZE CAGE CODE DRAWING NO
	3 PLC $\pm$ 0.1		A100779C=2007263
	4 PLC $\pm$ 0.1		SCALE 6:1 SHEET 4 OF 7 REV E1
	ANGLES $\pm$ 0.1		
MATERIAL	FINISH	WEIGHT	
		Customer Drawing	

LOC	DIST	REV	DATE	BY	APPV
GP	00				

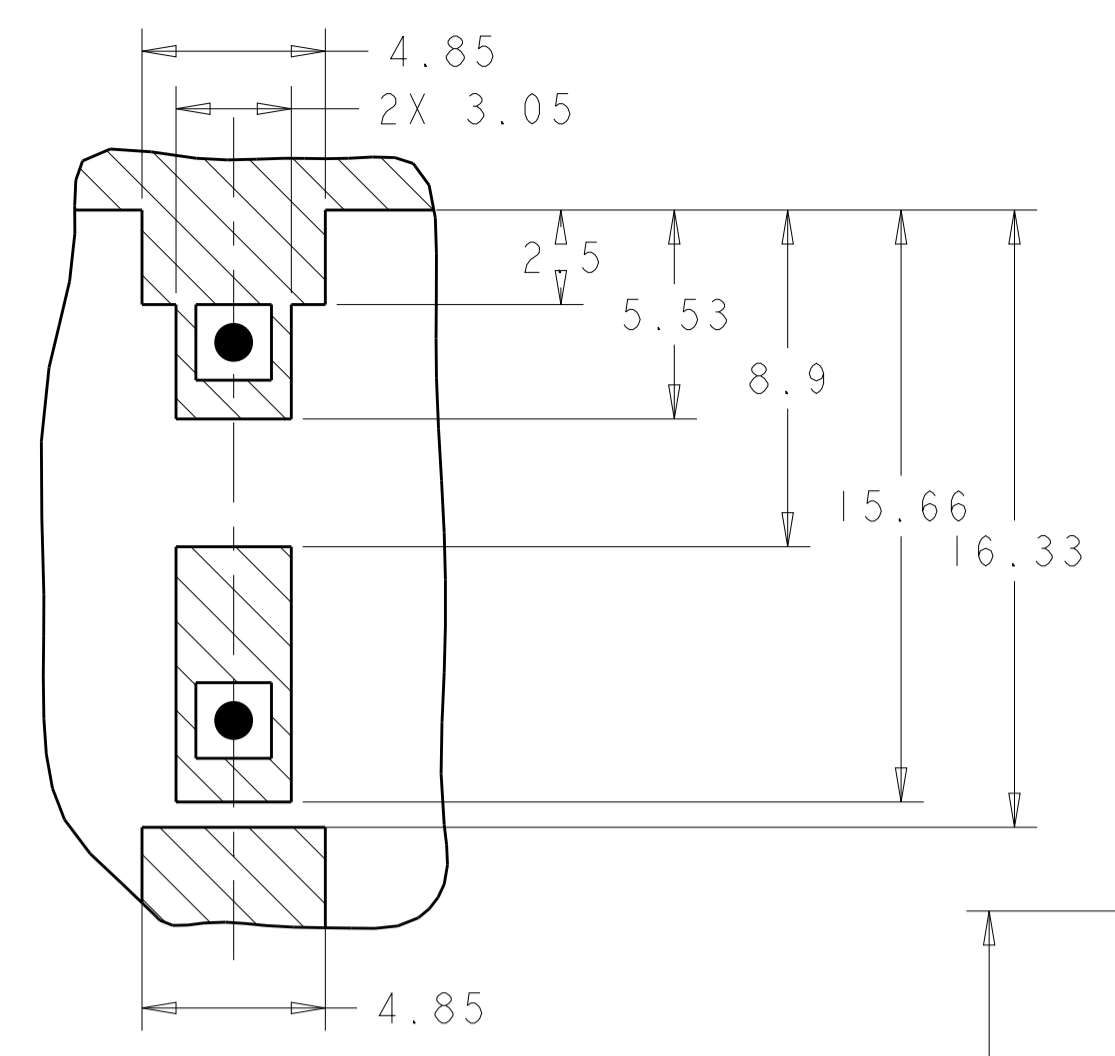


DETAIL G  
RECOMMENDED PT CONNECTOR LAYOUT  
4X INDIVIDUALLY  
SCALE 12:1

2007263-1/-3  
RECOMMENDED PCB CONFIGURATION  
WITH KEEP-OUT AREAS  
BELLY TO BELLY APPLICATIONS  
SCALE 6:1

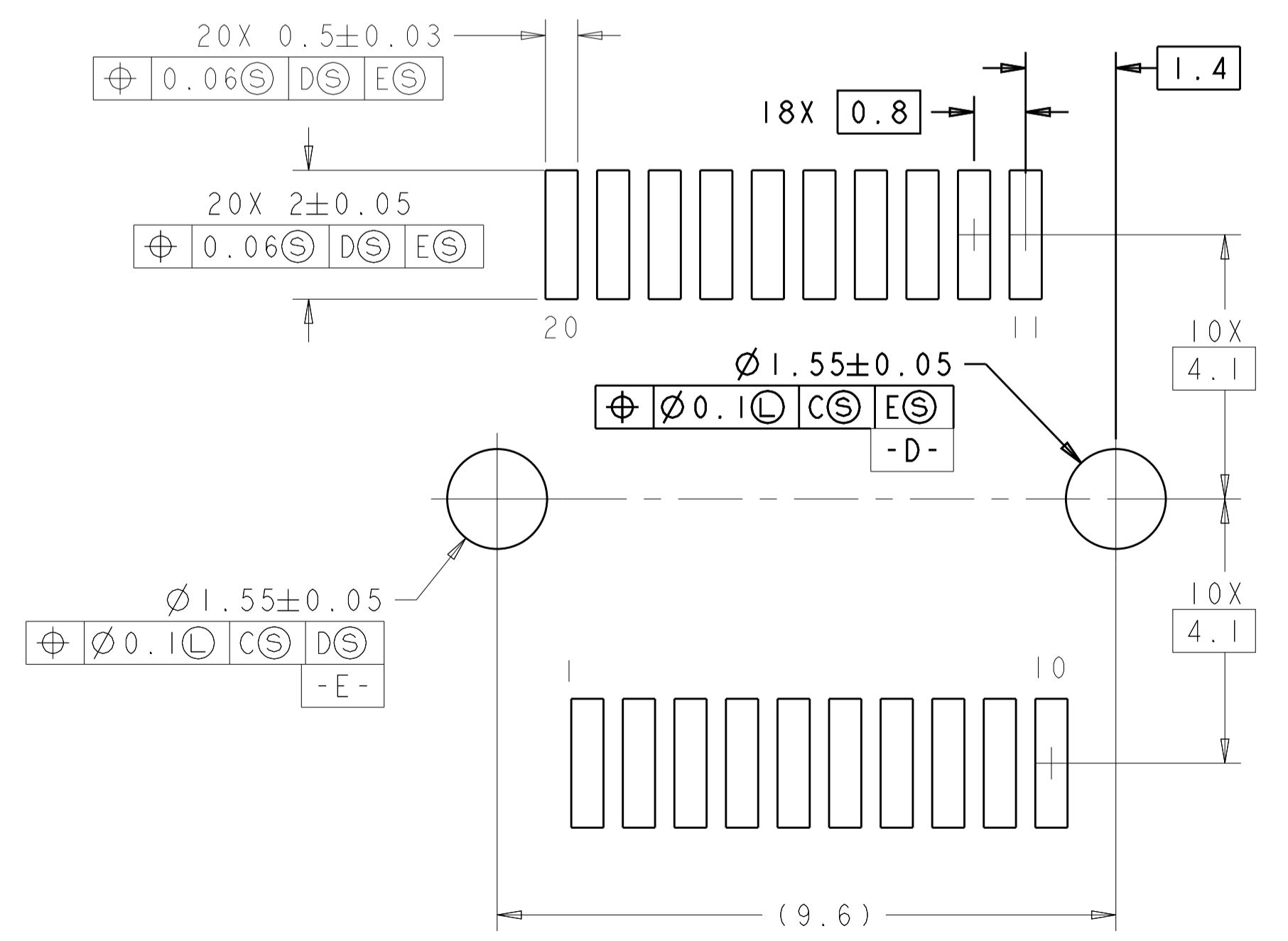
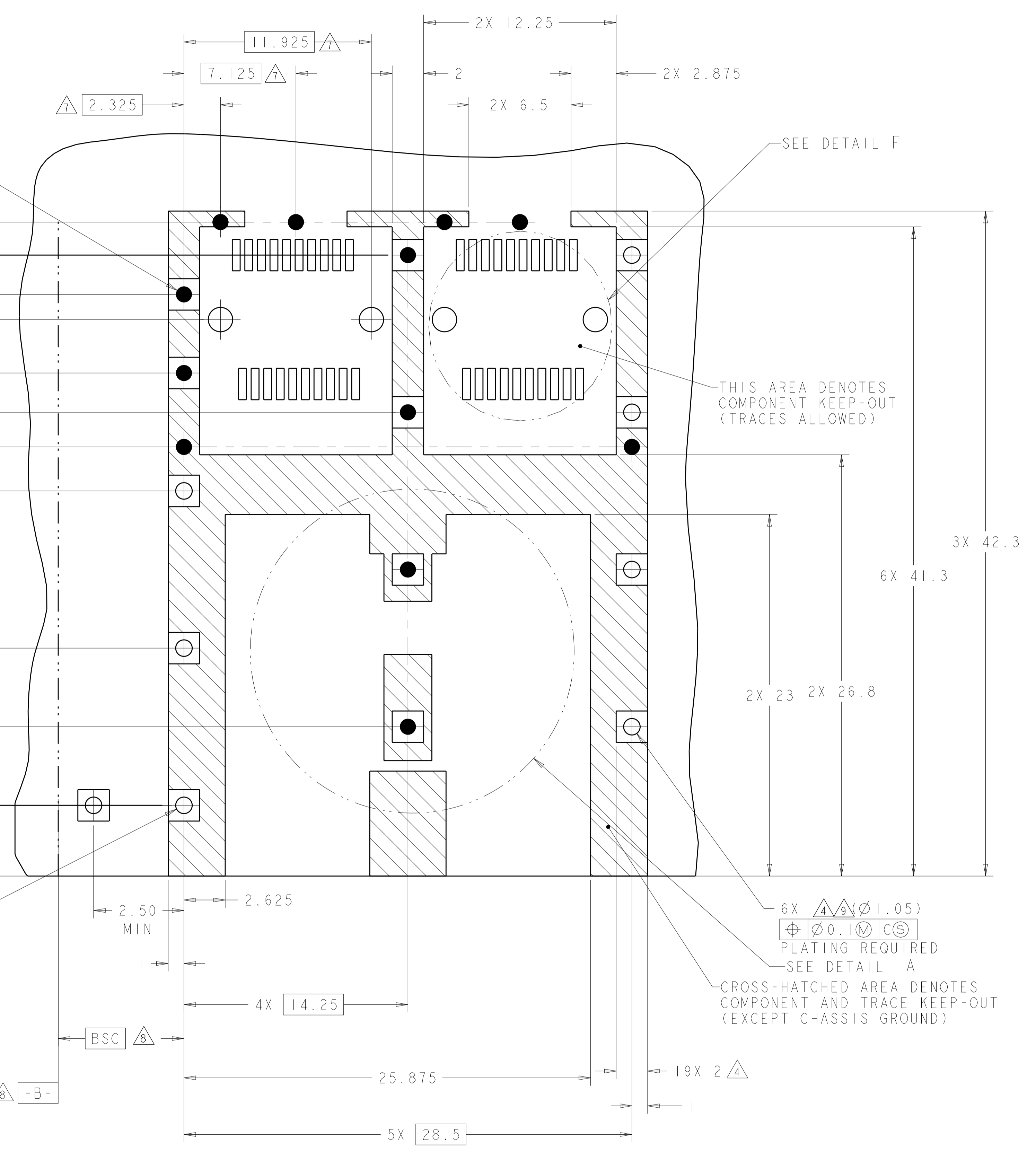
THIS DRAWING IS A CONTROLLED DOCUMENT.		OWN: M. SCHMITT 17JUL2007	TE Connectivity
DIMENSIONS: mm		CHK: M. SCHMITT 17JUL2007	
TOLERANCES UNLESS OTHERWISE SPECIFIED:		APPV: B. WERTZ 17JUL2007	NAME: SFP+ 1X2 CAGE ASSEMBLY PRESS FIT, EXTERNAL EMI SPRINGS
0 PLC	±0.1	PRODUCT SPEC	108-2364
1 PLC	±0.1	APPLICATION SPEC	114-13120
2 PLC	±0.1	WEIGHT	A100779C=2007263
3 PLC	±0.1	Customer Drawing	SCALE 6:1 SHEET 5 OF 7 REV E1
4 PLC	±0.1		
ANGLES	±1°		

LOC	DIST	REVISIONS					
GP	00	P	LTN	DESCRIPTION	DATE	DWN	APVD
		-	-	SEE SHEET 1	-	-	-



DETAIL A  
SCALE 5:1

12X  $\Delta$   $\Delta$  ( $\phi 0.95$ )  
 $\oplus \phi 0.10 \text{ (M)} \text{ (CS)}$   
 PLATING REQUIRED



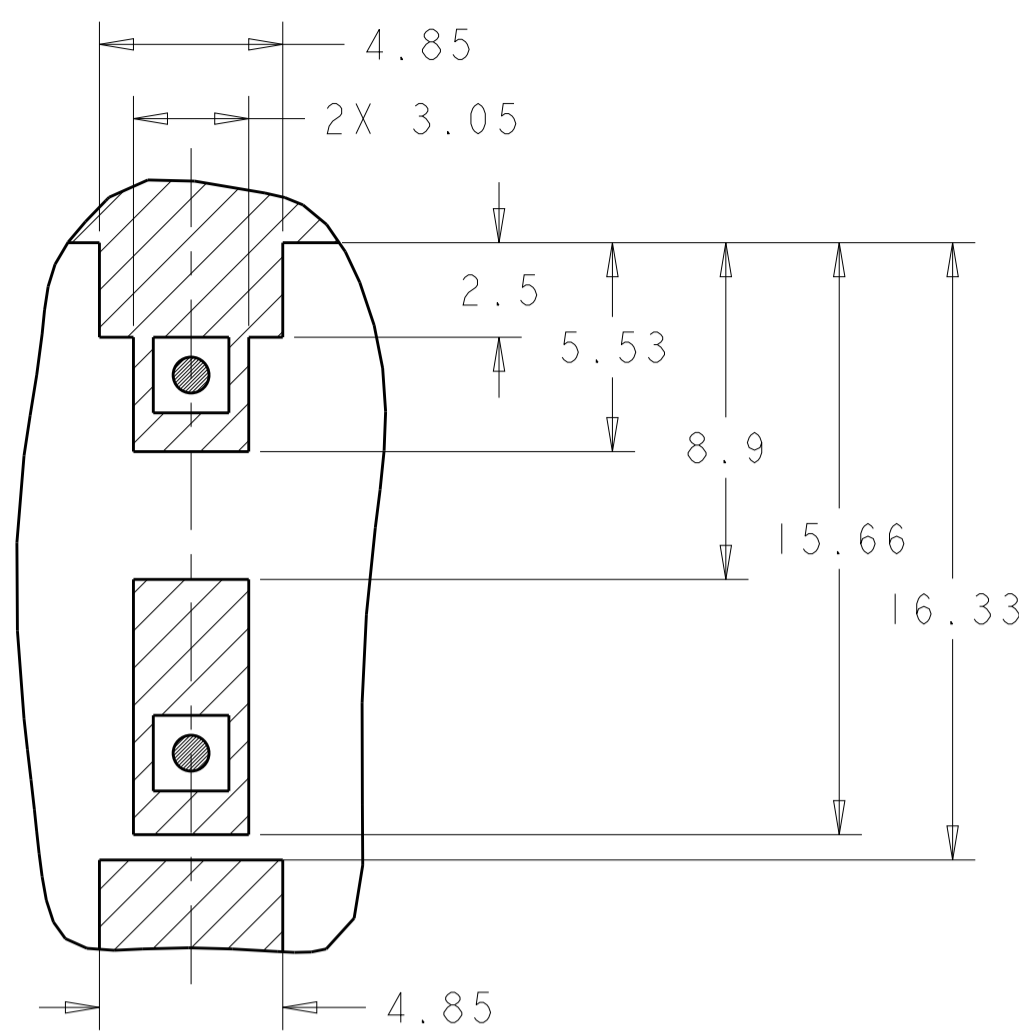
DETAIL F  
RECOMMENDED PT CONNECTOR LAYOUT  
2X INDIVIDUALLY  
SCALE 12:1

2007263-5  
RECOMMENDED PCB CONFIGURATION  
WITH KEEP-OUT AREAS  
SINGLE SIDED APPLICATIONS

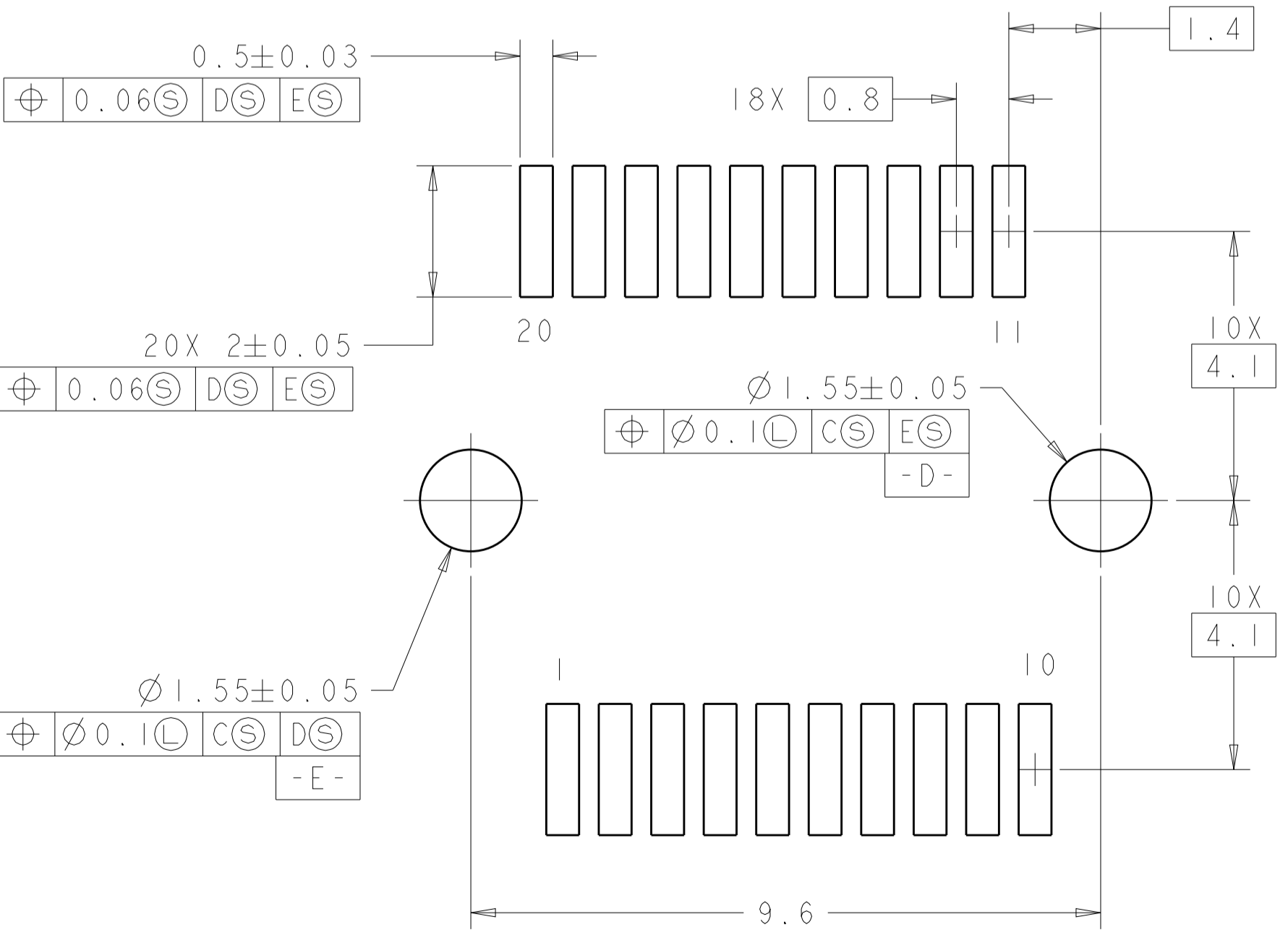
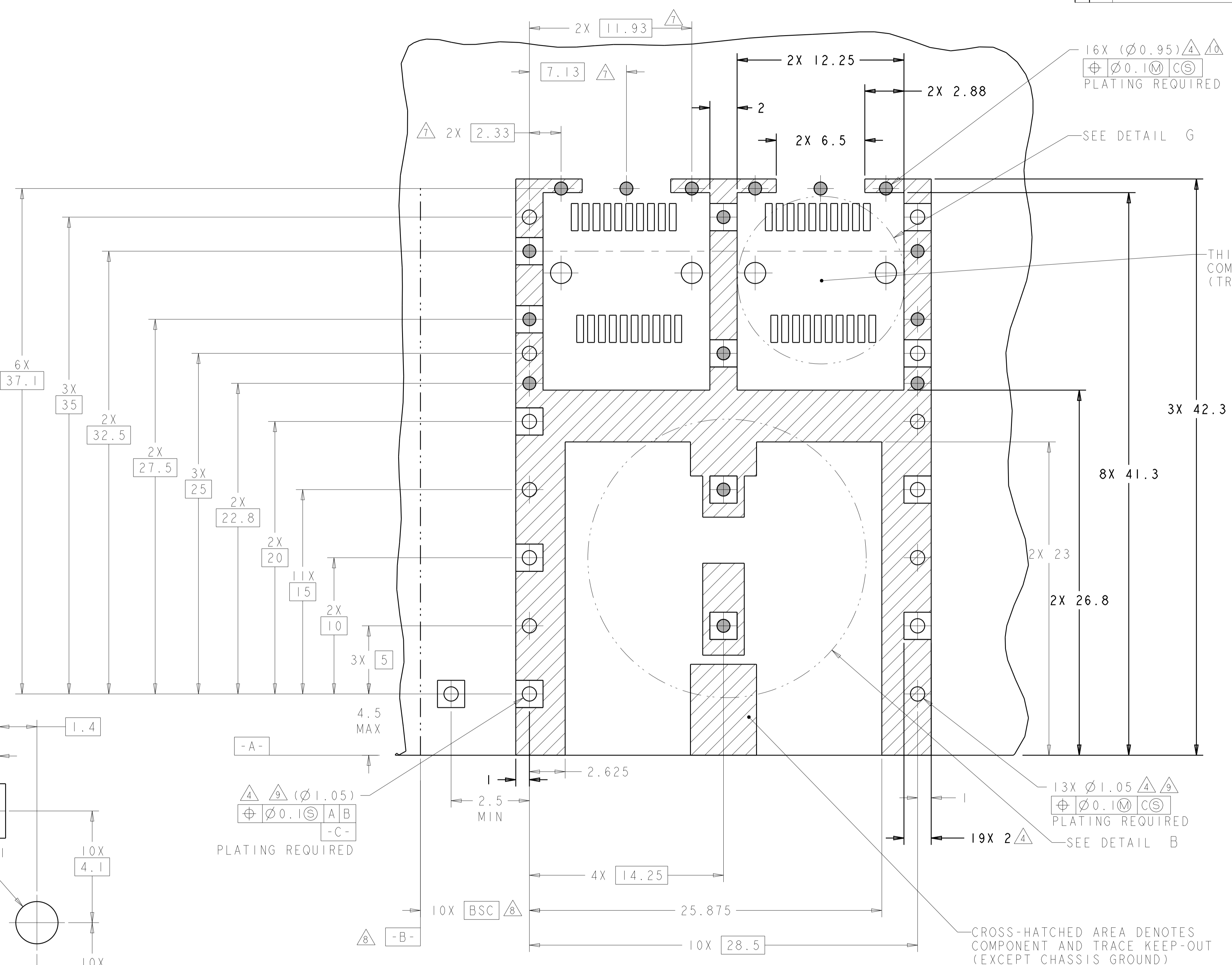
THIS DRAWING IS A CONTROLLED DOCUMENT.		DWN: M. SCHMITT 17JUL2007	TE Connectivity NAME: SFP+ 1X2 CAGE ASSEMBLY PRESS FIT, EXTERNAL EMI SPRINGS
DIMENSIONS: mm		CHK: M. SCHMITT 17JUL2007	
TOLERANCES UNLESS OTHERWISE SPECIFIED:		APVD: B. WERTZ 17JUL2007	PRODUCT SPEC: 108-2364
0 PLC $\pm 0.1$ 1 PLC $\pm 0.1$ 2 PLC $\pm 0.1$ 3 PLC $\pm 0.1$ 4 PLC $\pm 0.1$ ANGLES $\pm 0.1$		APPLICATION SPEC: 114-13120	RESTRICTED TO: -
MATERIAL:	FINISH:	WEIGHT:	SIZE: A1 00779
Customer Drawing		SCALE: 1:1	SHEET: 6 OF 7

LOC	DIST	REV	DATE	BY	APPV
GP	00				

REVISIONS			DATE	BY	APPV
-	SEE SHEET 1				



DETAIL B  
SCALE 5:1



DETAIL G  
RECOMMENDED PT CONNECTOR LAYOUT  
4X INDIVIDUALLY  
SCALE 12:1

2007263-5  
RECOMMENDED PCB CONFIGURATION  
WITH KEEP-OUT AREAS  
BELLY TO BELLY APPLICATIONS  
SCALE 6:1

THIS DRAWING IS A CONTROLLED DOCUMENT.		OWN: M. SCHMITT 17JUL2007	TE Connectivity
DIMENSIONS: mm		CHK: M. SCHMITT 17JUL2007	
TOLERANCES UNLESS OTHERWISE SPECIFIED:		APPV: B. WERTZ 17JUL2007	NAME: SFP+ 1X2 CAGE ASSEMBLY PRESS FIT, EXTERNAL EMI SPRINGS
0 PLC ±0.1	1 PLC ±0.1	PRODUCT SPEC 108-2364	SIZE: CAGE CODE DRAWING NO. RESTRICTED TO
2 PLC ±0.1	3 PLC ±0.1	APPLICATION SPEC 114-13120	A100779C=2007263
4 PLC ±0.1	ANGLES ±1°	WEIGHT	SCALE 1:1 SHEET 7 OF 7 REV E1
MATERIAL	FINISH	Customer Drawing	