

103309-3 Product Details

[Share](#) [Print](#) [Email](#)



103309-3

TE Internal Number: 103309-3

Active

[View 3D PDF](#)

AMP-LATCH Pin and Pinless Headers

[5 of 6 EU RoHS/ELV Compliant \(Find RoHS Compliant Alternates/Statement of Compliance\)](#)

Product Highlights:

- Header
- Header Type = Pin Header
- AMP-LATCH Product Line
- Low Profile
- 16 Positions

[View all Features](#)

Quick Links

- ▶ [Pricing & Availability](#)
- ▶ [Search for Tooling](#)
- ▶ [View Mating Products \(1\)](#)
- ▶ [Product Feature Selector](#)
- ▶ [Contact Us About This Product](#)

[Add to My Part List](#) [Request Sample](#) [Find Similar Products](#)
[Buy Product](#)

Documentation & Additional Information

Product Drawings:

- [HEADER ASSY, LOW PROFILE, AMP-LATCH \(PDF, English\)](#)

Catalog Pages/Data Sheets:

- None Available

Product Specifications:

- None Available

Application Specifications:

- None Available

Instruction Sheets:

- None Available

CAD Files: [\(CAD Format & Compression Information\)](#)

- [2D Drawing \(DXF, Version H\)](#)
- [3D Model \(IGES, Version H\)](#)
- [3D Model \(STEP, Version H\)](#)

[List all Documents](#)

Additional Information:

- [Product Line Information](#)

Related Products:

- [Tooling](#)
- [Mating Products \(1\)](#)

Product Features (Please use the Product Drawing for all design activity)

Product Type Features:

- Connector Type = Header
- Product Line = AMP-LATCH
- Profile = Low
- [PCB Mounting Orientation](#) = Vertical
- [PCB Mount Retention](#) = Without
- [Mating Connector Lock](#) = Without
- [Ejection Latches](#) = Without
- Post Size (mm [in]) = 0.64 [.025]

Electrical Characteristics:

- Current Rating (A) = 1
- Insulation Resistance (MΩ) = 5,000

Termination Features:

- [Termination Post Length \(mm \[in\]\)](#) = 3.05 [0.120]

Housing Features:

- [Centerline, Matrix \(mm \[in\]\)](#) = 2.54 x 2.54 [.100 x .100]
- [Mating Alignment Type](#) = Center, Dual Polarizing Bar
- [Housing Style](#) = 4-Sided
- Mating Alignment = With
- Housing Material = Thermoplastic - GF
- Housing Color = Black

Configuration Features:

- [Number of Positions](#) = 16
- Shrouded = Yes

Industry Standards:

- [RoHS/ELV Compliance](#) = ELV compliant, 5 of 6 Compliant
- [Lead Free Solder Processes](#) = Not suitable for lead

<p>Dimensions:</p> <ul style="list-style-type: none"> [Shrouded] End Dimension (mm [in]) = 3.81 [0.150] <p>Body Features:</p> <ul style="list-style-type: none"> Header Type = Pin Header Daisy Chain = With <p>Contact Features:</p> <ul style="list-style-type: none"> Contact Plating, Mating Area, Material = Gold (30), Gold Flash over Palladium Nickel Contact Shape = Square Contact Base Material = Copper Alloy Solder Tail Contact Plating = Tin-Lead over Nickel 	<p>free processing</p> <ul style="list-style-type: none"> UL Flammability Rating = UL 94V-0 Approved Standards = UL E28476, CSA LR7189 <p>Environmental:</p> <ul style="list-style-type: none"> Operating Temperature (°C) = -65 - +105 <p>Conditions for Usage:</p> <ul style="list-style-type: none"> Temperature Rating = Standard <p>Other:</p> <ul style="list-style-type: none"> Brand = AMP
--	--

Corporate Information

[About TE](#)
[Investors](#)
[News Room](#)
[Supplier Portal](#)
[Careers](#)
[Terms & Conditions](#)
[Privacy Policy](#)
[AODA Accessibility Policy](#)
[AODA Multi-Year Accessibility Plan](#)

Quick Links

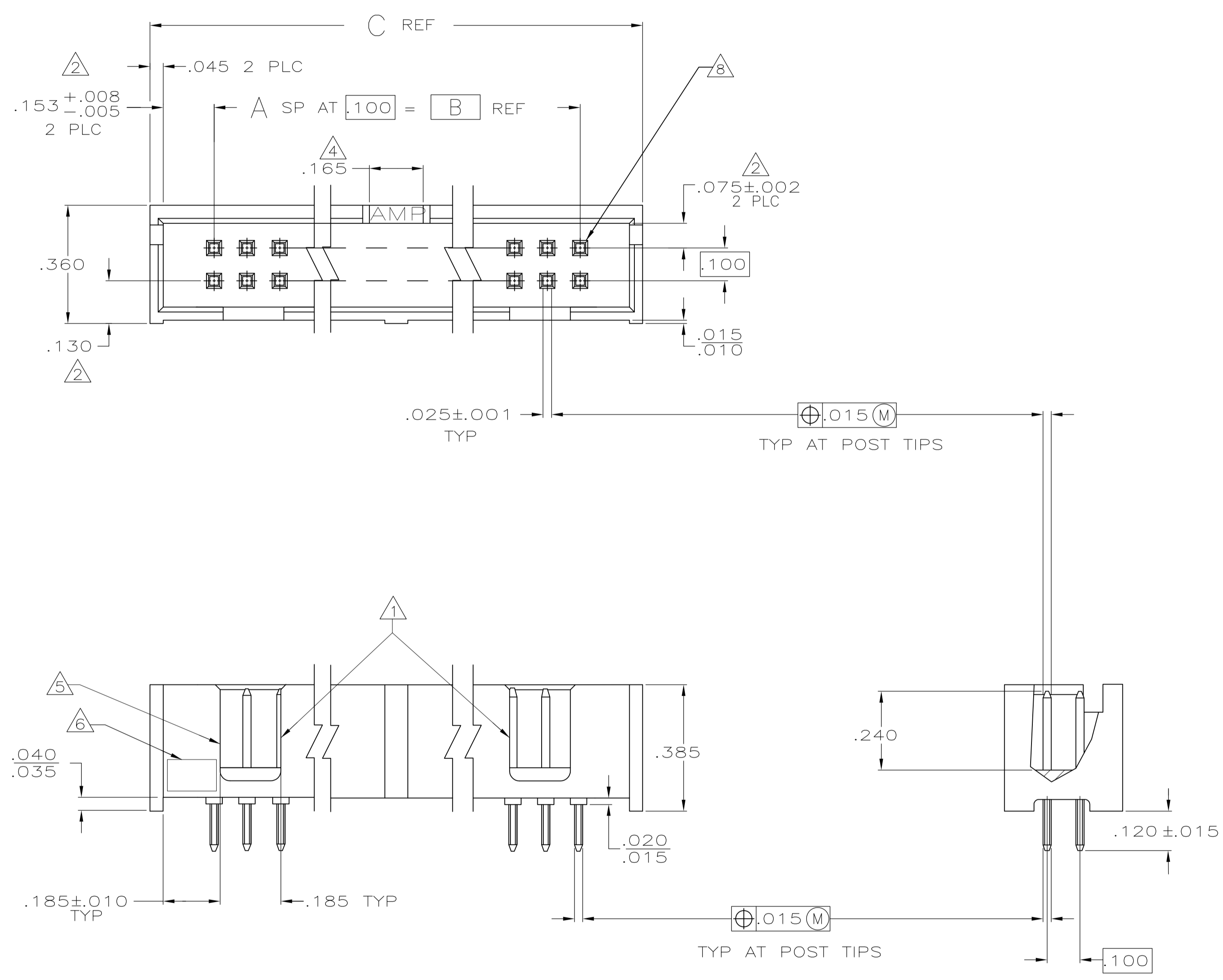
[Distributor Inventory](#)
[Product Cross Reference](#)
[Documents & Drawings](#)
[Product Compliance Support Center](#)
[Site Map](#)

Customer Support

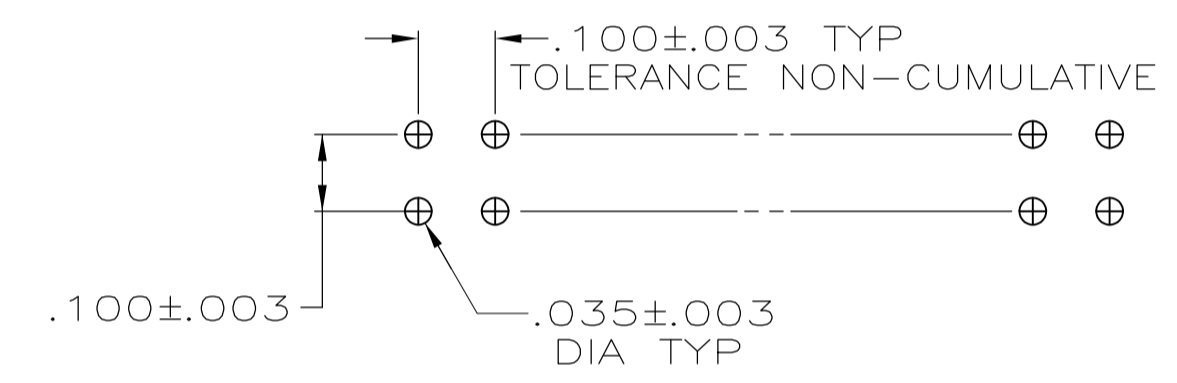
[Email or Chat With Us](#)
[Find a Phone Number](#)
[Knowledge Base](#)
[Manage Your Account](#)

Keep Me Informed





- ⚠ DOUBLE BAR POLARIZATION
- ⚠ THE NOTED DIMENSIONS APPLY AT THE INTERSECTION OF THE POST AND HOUSING
- ⚠ POSTS: GOLD FLASH OVER PALLADIUM-NICKEL PLATE, .000030 MIN TOTAL ON THE MATING SURFACES, .000100 MIN TIN-LEAD PLATE ON THE SOLDER-TAILS, .000050 MIN NICKEL UNDERPLATE ON THE ENTIRE POST.
-OR-
.000030 MIN GOLD PLATE ON THE MATING SURFACES, .000100 MIN TIN-LEAD PLATE ON THE SOLDER-TAILS, .000050 MIN NICKEL UNDERPLATE ON THE ENTIRE POST.
- ⚠ CENTER POLARIZATION SLOT
- ⚠ FOR 10 POSN ASSEMBLY, SLOT OMITTED WHERE INDICATED
- ⚠ OPTIONAL AMP IDENTIFICATION NUMBER (DATE CODE). LOCATION APPROXIMATELY WHERE SHOWN.
- ⚠ PACKAGED IN GANG OF TUBES.
- ⚠ NUMBER 1 POSITION.



⚠ OBSOLETE	2.800	2.400	24	50	1-103309-8
⚠ OBSOLETE	1.500	1.100	11	24	1-103309-7
⚠ OBSOLETE	1.600	1.200	12	26	1-103309-4
⚠ OBSOLETE	1.300	.900	9	20	1-103309-3
⚠ OBSOLETE	3.300	2.900	29	60	1-103309-2
⚠ OBSOLETE	3.100	2.700	27	56	1-103309-1
	2.800	2.400	24	50	1-103309-0
⚠ OBSOLETE	2.500	2.100	21	44	103309-9
	2.300	1.900	19	40	103309-8
	2.000	1.600	16	34	103309-7
	1.600	1.200	12	26	103309-6
	1.300	.900	9	20	103309-5
⚠ OBSOLETE	1.200	.800	8	18	103309-4
	1.100	.700	7	16	103309-3
	1.000	.600	6	14	103309-2
	.800	.400	4	10	103309-1
	C	B	A	NO OF POSN	ASSEMBLY PART NUMBER

THIS DRAWING IS A CONTROLLED DOCUMENT.

DIMENSIONS: INCHES

TOLERANCES UNLESS OTHERWISE SPECIFIED:

0 PLC	± .005
1 PLC	± .004
2 PLC	± .003
3 PLC	± .002
4 PLC	± .001
ANGLES	± .005

MATERIAL: HOUSING: GLASS FILLED NYLON OR PET; BLACK; UL 94V-0 RATED; POSTS: BRASS

FINISH: ⚠

APPROVED: H. MOLL, 8-27-87; L. MEYER, 9-03-87; R. FEIDT, 9-03-87

NAME: HEADER ASSY, LOW PROFILE, AMP-LATCH

PRODUCT SPEC: 108-40018

APPLICATION SPEC: -

SIZE: A1

WEIGHT: -

CAGE CODE: 00779

DRAWING NO: 103309

RESTRICTED TO: -

CUSTOMER DRAWING

SCALE: 4:1

SHEET: 1 OF 1

REV: N1

STE TE Connectivity