

1-1469372-1 Product Details

[Share](#) [Print](#) [Email](#)



1-1469372-1

TE Internal Number: 1-1469372-1

 **Active**

 [View 3D PDF](#)

ATCA Power Connectors and Hardware

 **Always EU RoHS/ELV Compliant**
(Statement of Compliance)

Product Highlights:

- Accessory
- Accessory Type = Guide Module
- AdvancedATCA Application
- Male
- Inserts = Without

[View all Features](#)

Quick Links

- ▶ [Pricing & Availability](#)
- ▶ [Search for Tooling](#)
- ▶ [View Mating Products \(1\)](#)
- ▶ [Product Feature Selector](#)
- ▶ [Contact Us About This Product](#)

[Add to My Part List](#)

[Request Sample](#)

[Find Similar Products](#)

[Buy Product](#)

Documentation & Additional Information

Product Drawings:

- [ATCA GUIDE MODULE \(REAR TRANSITION MODULE - A2\)](#) (PDF, English)

Catalog Pages/Data Sheets:

- [The Complete Solution for AdvancedTCA](#) (PDF, English)
- [High Speed Backplane Connectors catalog - Z-PACK HM-...](#) (PDF, English)
- [POWER_CONNECTORS_CATALOG_SEC01_BOARD_TO_BOARD](#) (PDF, English)
- [Solutions for AdvancedTCA, AdvancedTCA 300, MicroTCA...](#) (PDF, English)

Product Specifications:

- None Available

Application Specifications:

- [Z-PACK Hard Metric \(HM\)-Zd and HM-Zd Plus 2-, 3-, an...](#) (PDF, English)

Instruction Sheets:

- None Available

CAD Files: (CAD Format & Compression Information)

- [2D Drawing](#) (DXF, Version C)
- [3D Model](#) (IGES, Version C)
- [3D Model](#) (STEP, Version C)

[List all Documents](#)

Additional Information:

- [Product Line Information](#)

Related Products:

- [Tooling](#)
- [Mating Products \(1\)](#)

Product Features (Please use the Product Drawing for all design activity)

Product Type Features:

- Product Type = Accessory
- [Accessory Type](#) = Guide Module
- [Gender](#) = Male
- [Mount Angle](#) = Right Angle
- Finish = Nickel

Body Features:

- [Location](#) = Rear Transition
- Material = Zinc Alloy

Industry Standards:

- [RoHS/ELV Compliance](#) = RoHS compliant, ELV compliant
- [Lead Free Solder Processes](#) = Not relevant for lead free process
- RoHS/ELV Compliance History = Always was RoHS compliant

Identification Marking:

- Keyed Position = 1, 1

Contact Features: <ul style="list-style-type: none">Contact Plating, Mating Area, Material = Nickel over Copper Housing Features: <ul style="list-style-type: none">Inserts = WithoutVersion = A2	Operation/Application: <ul style="list-style-type: none">Application = AdvancedATCA Other: <ul style="list-style-type: none">Brand = TE ConnectivityComment = Hardware not supplied.
--	---

Corporate Information

About TE
Investors
News Room
Supplier Portal
Careers
Terms & Conditions
Privacy Policy
AODA Accessibility Policy
AODA Multi-Year Accessibility Plan

Quick Links

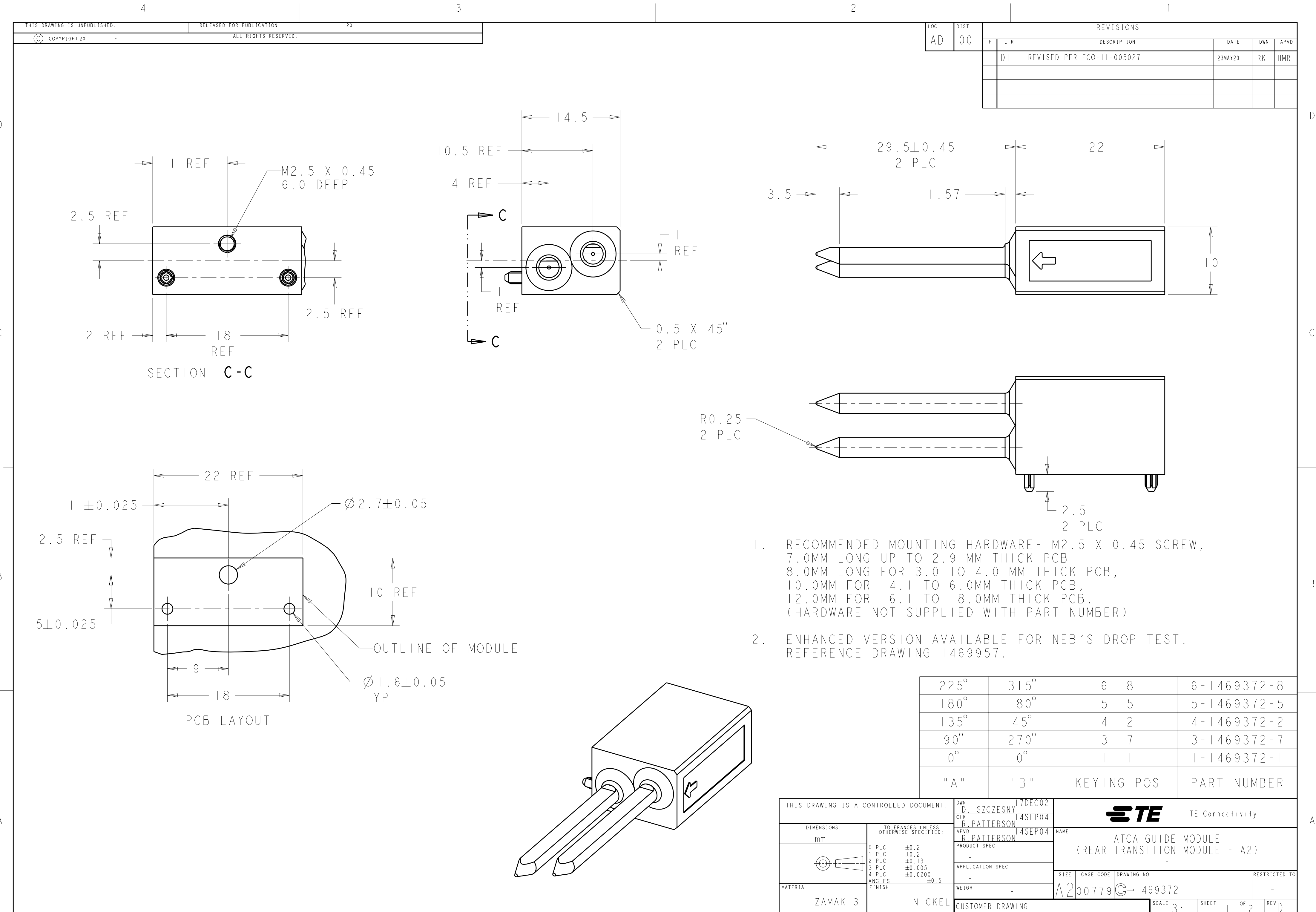
Distributor Inventory
Product Cross Reference
Documents & Drawings
Product Compliance Support Center
Site Map

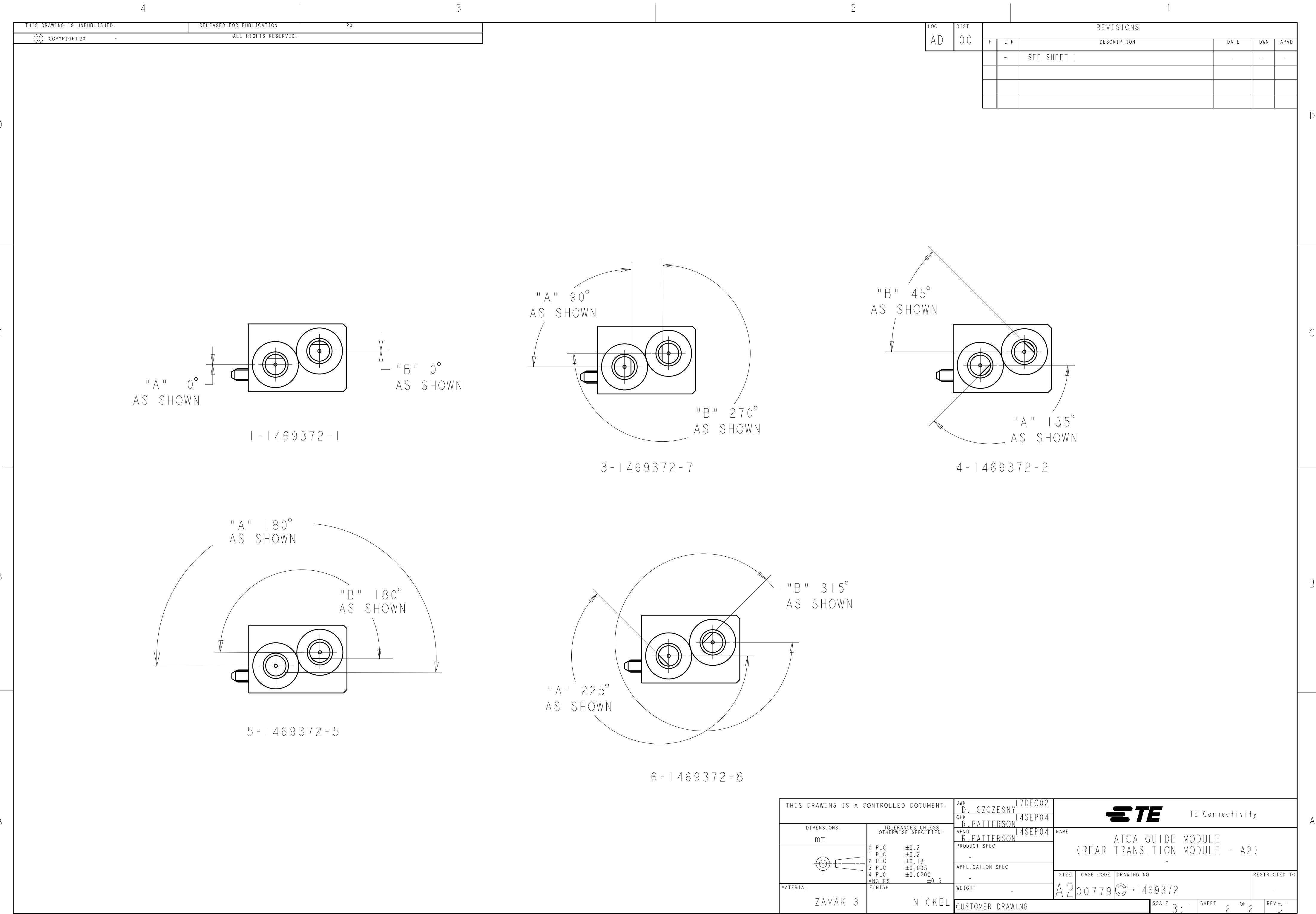
Customer Support

Email or Chat With Us
Find a Phone Number
Knowledge Base
Manage Your Account

Keep Me Informed







LOC	DIST	REVISIONS					
AD	00	P	LTR	DESCRIPTION	DATE	DWN	APVD
			-	SEE SHEET 1	-	-	-

THIS DRAWING IS A CONTROLLED DOCUMENT.		DWN D. SZCZESNY 17DEC02	TE Connectivity	
		CHK R. PATTERSON 14SEP04		
DIMENSIONS: mm		APVD R. PATTERSON 14SEP04	NAME ATCA GUIDE MODULE (REAR TRANSITION MODULE - A2)	
		PRODUCT SPEC -	SIZE A200779	
		APPLICATION SPEC -	CAGE CODE C-1469372	
MATERIAL ZAMAK 3	TOLERANCES UNLESS OTHERWISE SPECIFIED: 0 PLC ±0.2 1 PLC ±0.2 2 PLC ±0.13 3 PLC ±0.005 4 PLC ±0.0200 ANGLES ±0.5 FINISH	WEIGHT -	RESTRICTED TO -	
NICKEL		CUSTOMER DRAWING	SCALE 3:1	SHEET 2 OF 2
			REV D1	