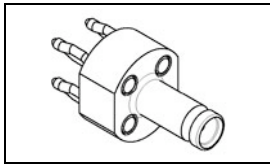


## 6274431-1 Product Details

[Share](#)[Print](#)[Email](#)

**6274431-1**

TE Internal Number: 6274431-1



Active

### Series 1.0/2.3 RF Connectors



Always EU RoHS/ELV Compliant (Statement of Compliance)

#### Product Highlights:

- Connector - RF
- Connector Style = Jack
- Without Panel Mount Retention
- Coupler Type = B (Snap-on, Push-Pull)
- Connector Impedance = 75  $\Omega$

[View all Features](#)

### Quick Links

- ▶ [Pricing & Availability](#)
- ▶ [Search for Tooling](#)
- ▶ [View Mating Products \(4\)](#)
- ▶ [Product Feature Selector](#)
- ▶ [Contact Us About This Product](#)

[Add to My Part List](#)

[Request Sample](#)

[Find Similar Products](#)

[Buy Product](#)

### Documentation & Additional Information

#### Product Drawings:

- [JACK, VERTICAL, PCB, ACTION PIN, SERIES 1.0/2.3 \(PDF, English\)](#)

#### Catalog Pages/Data Sheets:

- [DIN Connectors \(PDF, English\)](#)

#### Product Specifications:

- None Available

#### Application Specifications:

- None Available

#### Instruction Sheets:

- None Available

#### CAD Files:

- None Available

#### Related Products:

- [Tooling](#)
- [Mating Products \(4\)](#)

[List all Documents](#)

### Product Features (Please use the Product Drawing for all design activity)

#### Product Type Features:

- Product Type = Connector - RF
- Coupler Type = B (Snap-on, Push-Pull)

#### Mechanical Attachment:

- Panel Mount Retention = Without

#### Electrical Characteristics:

- Connector Impedance ( $\Omega$ ) = 75

#### Termination Features:

- Termination Type = Printed Circuit Board

#### Body Features:

- Body Style = Straight

#### Housing Features:

- Connector Style = Jack

#### Industry Standards:

- [RoHS/ELV Compliance](#) = RoHS compliant, ELV compliant
- [Lead Free Solder Processes](#) = Not relevant for lead free process
- RoHS/ELV Compliance History = Always was RoHS compliant

#### Packaging Features:

- Packaging Quantity = 100/Bag

#### Other:

- Brand = AMP
- Comment = With ACTION PIN posts.

### Corporate Information

[About TE](#)

[Investors](#)

[News Room](#)

[Supplier Portal](#)

[Careers](#)

[Terms & Conditions](#)

[Privacy Policy](#)

### Quick Links

[Distributor Inventory](#)

[Product Cross Reference](#)

[Documents & Drawings](#)

[Product Compliance Support Center](#)

[Site Map](#)

### Customer Support

[Email or Chat With Us](#)

[Find a Phone Number](#)

[Knowledge Base](#)

[Manage Your Account](#)



Keep Me Informed



4

3

2

1

THIS DRAWING IS UNPUBLISHED.

RELEASED FOR PUBLICATION

© COPYRIGHT 19

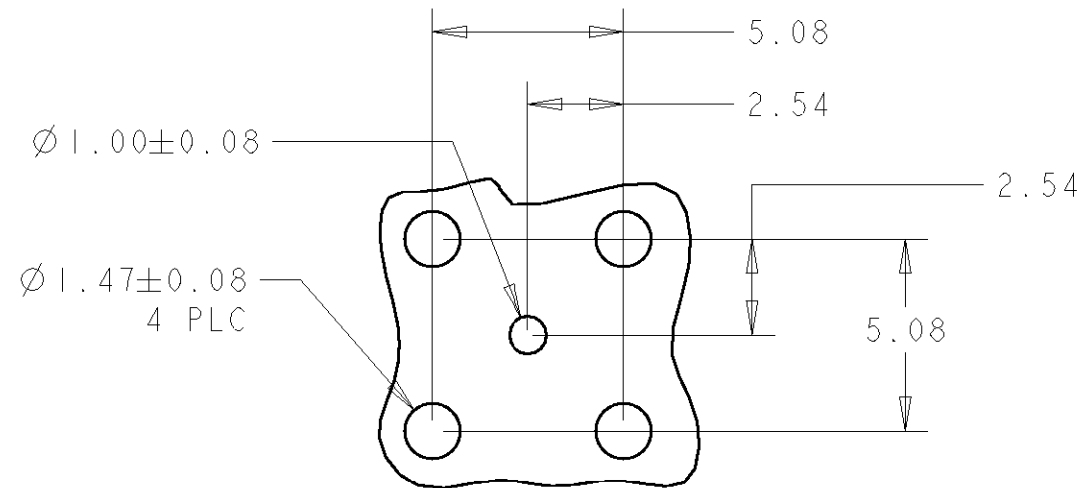
BY TYCO ELECTRONICS CORPORATION. ALL RIGHTS RESERVED.

LOC

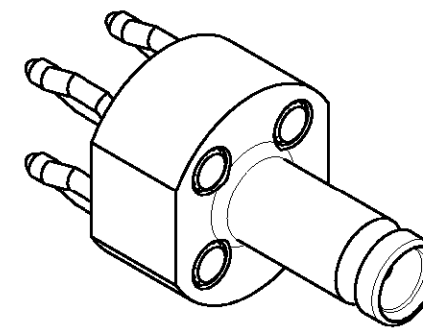
DIST

REVISIONS

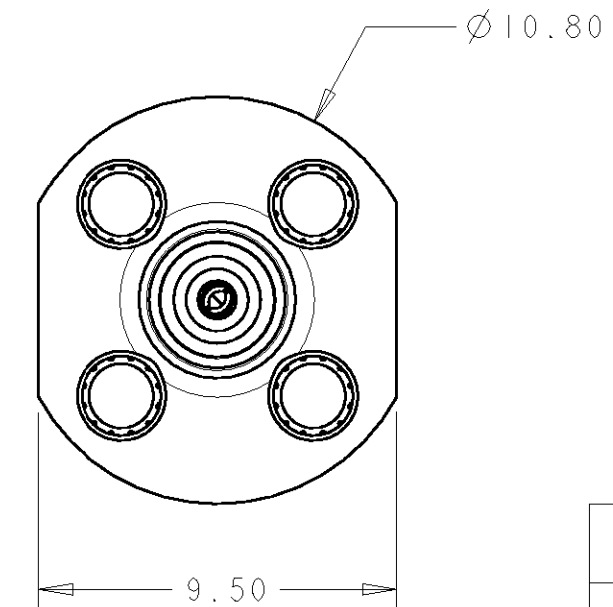
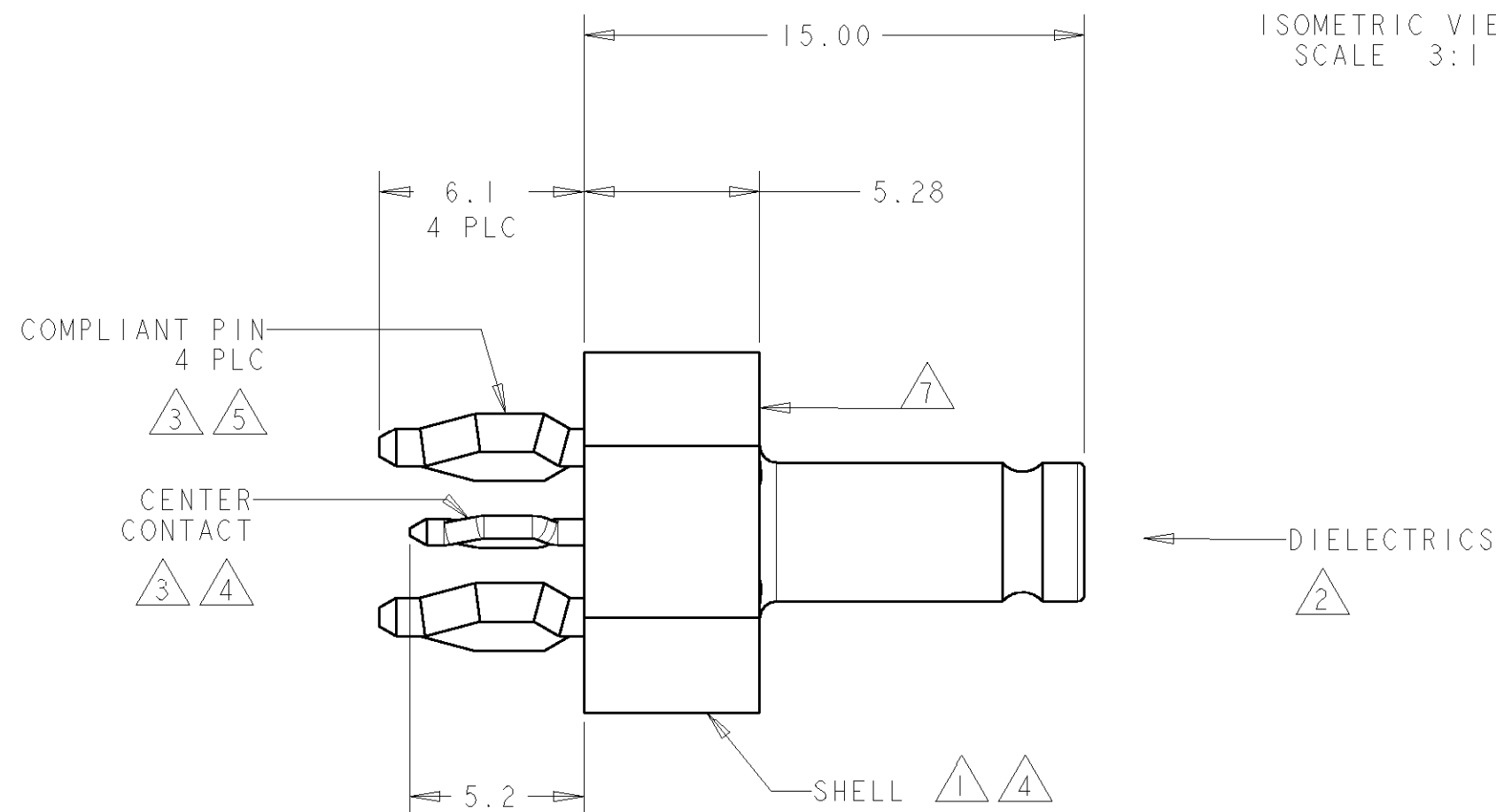
P	LTR	DESCRIPTION	DATE	DWN	APVD
	0	RELEASED PER EC 0S14-0496-04.	14FEB2005	JGH	JGH
-	-		-	-	-
-	-		-	-	-
-	-		-	-	-



RECOMMENDED PCB LAYOUT

ISOMETRIC VIEW  
SCALE 3:1

- 1 BRASS PER ASTM B 16.
- 2 PTFE PER ASTM D 1710.
- 3 PHOSPHOR BRONZE PER ASTM B 139.
- 4 GOLD PLATE PER MIL-G-45204.
- 5 TIN PLATE PER ASTM B 545.
- 6 INTERFACE CONFORMS TO CECC 22 230 AND IEC 169-29.
- 7 APPLY FORCE ONTO THIS SURFACE TO ASSEMBLE INTO PC BOARD.
8. THIS PRODUCT HAS NOT COMPLETED VALIDATION TESTING.



6274431-1

PART NUMBER

THIS DRAWING IS A CONTROLLED DOCUMENT FOR TYCO ELECTRONICS CORPORATION  
IT IS SUBJECT TO CHANGE AND THE CONTROLLING ENGINEERING ORGANIZATION  
SHOULD BE CONTACTED FOR THE LATEST REVISION.

DIMENSIONS:	TOLERANCES UNLESS OTHERWISE SPECIFIED:
mm	
	0 PLC $\pm$
	1 PLC $\pm 0.2$
	2 PLC $\pm 0.05$
	3 PLC $\pm$
	4 PLC $\pm$
	ANGLES $\pm$
MATERIAL	FINISH
1 2 3	4 5

DWN	J. HAVENER	14FEB2005
CHK	J. HAVENER	14FEB2005
APVD	J. HAVENER	14FEB2005
PRODUCT SPEC	6	
APPLICATION SPEC		
WEIGHT	-	
CUSTOMER DRAWING		

<b>AMP</b>		AMP Incorporated Harrisburg, PA 17105-3608	
NAME JACK, VERTICAL, PCB, ACTION PIN, SERIES 1.0/2.3			
SIZE	CAGE CODE	DRAWING NO	RESTRICTED TO
A3	00779	C=6274431	-
SCALE 5:1		SHEET 1 OF 1	REV 0