



Have a Question?
Chat with a Product
Information Specialist

What can we help you find?

[Products](#) [Industries](#) [Resources](#) [About TE](#) [My Account](#) [Innovation](#) [Support Center](#)

1-179608-6 Product Details

[Share](#) [Print](#) [Email](#)



1-179608-6

TE Internal Number: 1-179608-6

Active

[View 3D PDF](#)

2mm AMP CT Connectors

Always EU RoHS/ELV Compliant (Statement of Compliance)

Product Highlights:

- Wire-to-Board
- Accessory
- Accessory Type = Holder
- For Use With MT Connector
- 16 Positions

[View all Features](#)

Quick Links

- ▶ [Pricing & Availability](#)
- ▶ [Search for Tooling](#)
- ▶ [Product Feature Selector](#)
- ▶ [Contact Us About This Product](#)

[Add to My Part List](#) [Request Sample](#) [Find Similar Products](#) [Buy Product](#)

Documentation & Additional Information	
<p>Product Drawings:</p> <ul style="list-style-type: none"> • HOLDER FOR CT DOUBLE ROW CONN. (TYPE:CT MT TYPE) (PDF, English) <p>Catalog Pages/Data Sheets:</p> <ul style="list-style-type: none"> • 2.0MM_AMP_CT_CONNECTOR_SERIES_QUICK_REF_GUIDE (PDF, English) <p>Product Specifications:</p> <ul style="list-style-type: none"> • CT DOUBLE ROW CONNECTOR (PDF, English) <p>Application Specifications:</p> <ul style="list-style-type: none"> • None Available <p>Instruction Sheets:</p> <ul style="list-style-type: none"> • None Available <p>CAD Files: (CAD Format & Compression Information)</p> <ul style="list-style-type: none"> • 2D Drawing (DXF, Version A) • 3D Model (IGES, Version A) • 3D Model (STEP, Version A) 	<p>Additional Product Images:</p> <ul style="list-style-type: none"> • Typical Application <p>Related Products:</p> <ul style="list-style-type: none"> • Tooling
List all Documents	

Product Features (Please use the Product Drawing for all design activity)	
<p>Product Type Features:</p> <ul style="list-style-type: none"> • Product Type = Accessory • Accessory Type = Holder <p>Electrical Characteristics:</p> <ul style="list-style-type: none"> • Contact - Rated Current (A) = 3 • Operating Voltage Reference = AC/DC, AC, DC • Operating Voltage (VAC) = 125 • Operating Voltage (VDC) = 125 <p>Termination Features:</p> <ul style="list-style-type: none"> • Wire/Cable Size (AWG) = 22 - 30 • Termination Method to Wire/Cable = Insulation Displacement Crimp (IDC) <p>Dimensions:</p> <ul style="list-style-type: none"> • Length (X-Axis) (mm [in]) = 20.25 [0.797] • Width (Z-Axis) (mm [in]) = 8.50 [0.334] • Profile Height (Y-Axis) (mm [in]) = 6.90 [0.272] <p>Body Features:</p> <ul style="list-style-type: none"> • Mating Retention = With <p>Housing Features:</p> <ul style="list-style-type: none"> • Centerline (mm [in]) = 2.00 [0.079] • Housing Color = Natural 	<p>Configuration Features:</p> <ul style="list-style-type: none"> • Number of Positions = 16 • Number of Rows = 2 <p>Industry Standards:</p> <ul style="list-style-type: none"> • RoHS/ELV Compliance = RoHS compliant, ELV compliant • Lead Free Solder Processes = Not relevant for lead free process • RoHS/ELV Compliance History = Always was RoHS compliant <p>Environmental:</p> <ul style="list-style-type: none"> • Operating Temperature (°C [°F]) = -30 - +105 [-22 - +221] <p>Conditions for Usage:</p> <ul style="list-style-type: none"> • For Use With = MT Connector <p>Operation/Application:</p> <ul style="list-style-type: none"> • Application Use = Wire-to-Board • Pick and Place Cover = Without <p>Packaging Features:</p> <ul style="list-style-type: none"> • Packaging Method = Bag <p>Other:</p> <ul style="list-style-type: none"> • Brand = AMP • Comment = Two receptacle connectors are applied per holder.

NUMBER C-179608

三角法 (3rd ANGLE PROJECTION)

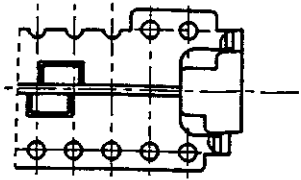
METRIC

2-179608-4 : 本 ☒

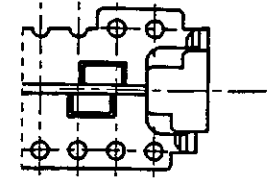
2-179608-4 : AS SHOWN

注記
1. 適用コネクタ型番 : X-173977-X (リセ)

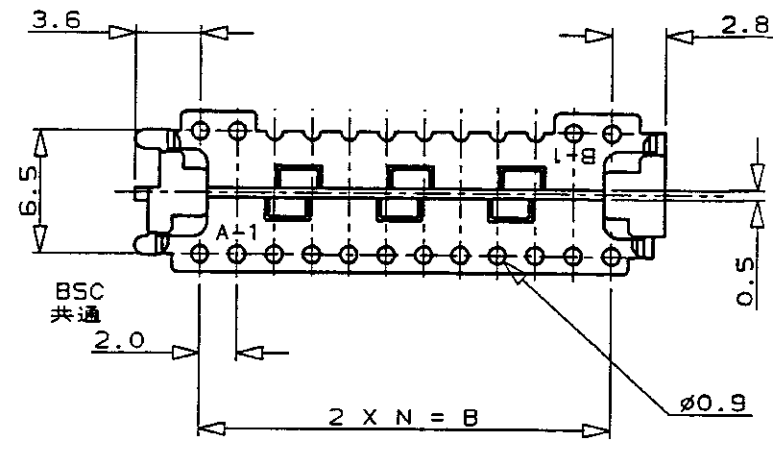
NOTE
1. CONNECTOR P/N : X-173977-X(REC)



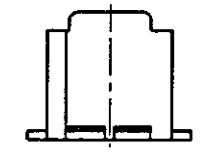
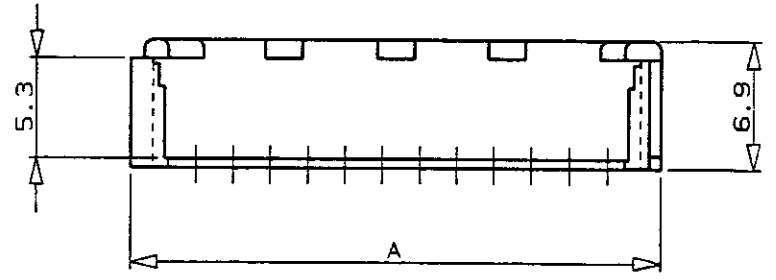
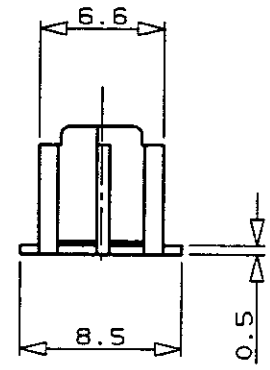
26P, 20P



28P, 22P, 16P



30P, 24P, 18P



34.3	28.0	14	30	3-179608-0
32.3	26.0	13	28	2- -8
30.3	24.0	12	26	2- -6
28.3	22.0	11	24	2- -4
26.3	20.0	10	22	2- -2
24.3	18.0	9	20	2- -0
22.3	16.0	8	18	1- -8
20.3	14.0	7	16	1-179608-6
A	B	N	POS 極数	型番 P/N

単位: 概 DIMENSIONS IN MM. DO NOT SCALE PRINT

PRINT DIST

AMP-J REV. 10/'93

Copyright ©1990年 AMP (Japan) LTD. ALL RIGHTS RESERVED.		Copyright ©1990 AMP (Japan) LTD. ALL RIGHTS RESERVED.		AMP 日本エー・エム・ピー株式会社 Kasawaki, Japan	
電線断面積 (WIRE RANGE) # mm² (AWG #)		被覆外径 (INSULATION DIA.) # mmφ		名称 (NAME) CT ダブルローコネクタ用ホルダー (タイプ: CT MT 用) HOLDER FOR CT DOUBLE ROW CONN. (TYPE: CT MT TYPE)	
材料 (MATERIAL) 66NYLON 66ナイロン樹脂		色 (COLOR) NATURAL 自然色		一般公差 (GENERAL TOLERANCE) 10以下: ±0.2 10を超え30以下: ±0.25 30を超え100以下: ±0.3 角 度: ±3°	
A REVISED FJ00-4832-94 H.S.T.F. 7/25 '96	0 RELEASED FJ00-0588-94 T.F.S.K. 5/18 '94	CHK. S.KUBOUCHI	APP. S. Kubouchi 7/25 '96	SIZE B J	番号 (No.) C-179608
LTR 変更 (REVISION RECORD)	DR	CHK DATE		尺度 (SCALE) #	REV. A SHEET 1 OF 1

(CUSTOMER DRAWING) 参考 ☒ 面